

## ADDENDUM NO. FIVE (5)

**Project:** Harold D. Thompson Regional Water Reclamation Facility  
Phase 1 – 2.5 MGD

**Date of Addendum:** July 7, 2011

**Owner:** Lower Fountain Metropolitan Sewage Disposal District

**Engineer:** GMS, Inc. Phone: (719) 475-2935  
611 North Weber, Suite 300 Telefax: (719) 475-2938  
Colorado Springs, CO 80903

THE FOLLOWING REVISIONS AND CLARIFICATIONS ARE HEREBY MADE TO THE BIDDING AND CONTRACT DOCUMENTS FOR THIS PROJECT:

### PART I – GENERAL

#### 1.01 SCOPE

- A. This Addendum forms a part of the Contract Documents and modifies the Project Manual and Drawings as described below.
- B. This Addendum consists of ten (10) pages, including attachments.

#### 1.02 ACKNOWLEDGMENT

- A. Acknowledge receipt of this Addendum by return electronic mail correspondence.

PART II - PROJECT MANUAL – This Addendum No. Five (5) makes no changes to the Project Manual

### PART III – DRAWINGS

3.01 **REVISE** the secondary clarifier effluent pipe size to 14-inch diameter on the following Drawings:

SHEET SC-1 DRILLED PIER PLAN  
SHEET SC-2 STRUCTURAL PLAN  
SHEET SC-3 JOINTING PLAN  
SHEET SC-6 DETAILED SITE PLAN  
SHEET SC-7 PROCESS PIPING PLAN  
SHEET SC-8 PROCESS EQUIPMENT PLAN  
SHEET SC-9 PROCESS EQUIPMENT AND PIPING SECTIONS  
SHEET SC-11 SECTIONS AND DETAILS

- A. **CLARIFICATION:** This Addendum No. Five (5) revises the size of the secondary clarifier effluent pipes from 12-inch diameter to 14-inch diameter to optimize the accommodations in the Pumping and Disinfection building for the UV disinfection channels and equipment. There are two secondary clarifier effluent pipes affected by this Addendum No. Five (5), one from each clarifier running to the east/southeast of the clarifiers. WGCC was verbally notified of this change on June 21, 2011 so they can properly adjust the size of the wall pipes that are to be cast into the clarifier walls.

As these pipes are a critical component of the secondary clarifiers, they appear on several project drawings. The secondary clarifier drawings (the SC series of drawings) listed above have been updated to reflect this 14-inch diameter pipe size. The revisions made to these

drawings are all individually noted with a revision diamond symbol that includes a number inside the diamond which corresponds to the revision description. These drawings have been posted to the project ftp site and attached to this Addendum No. Five (5). Please replace all previous versions of these drawings with the attached current issue drawings and instruct all suppliers and subcontractors to do the same.

### 3.02 ADDITIONAL REVISIONS

#### A. SHEET SC-9 – PROCESS EQUIPMENT AND PIPING SECTIONS

1. **REVISE** Section B to indicate a top of effluent launder wall (behind) elevation of 5405.92.

#### B. SHEET SC-11 – SECTIONS AND DETAILS

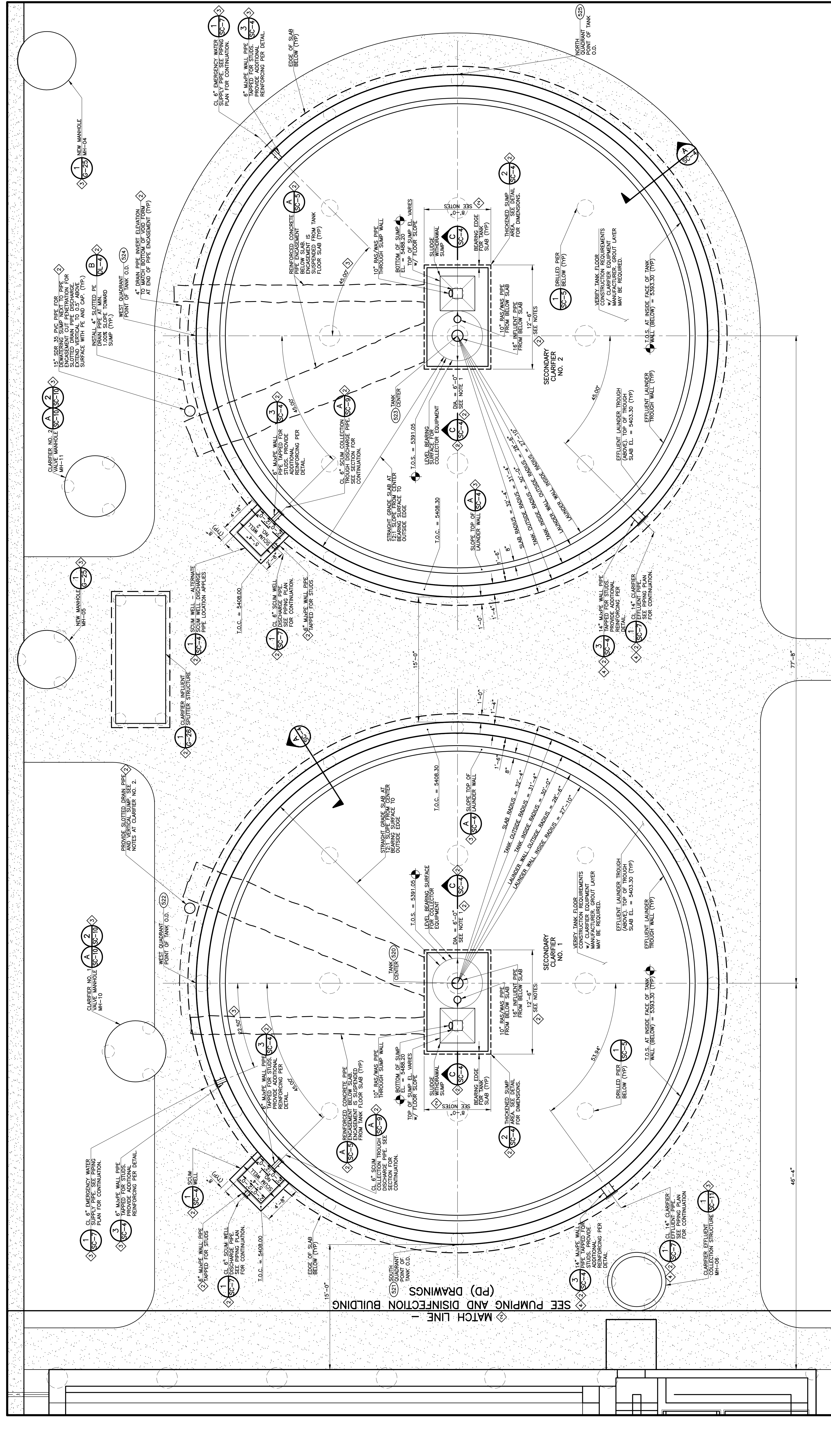
1. **REVISE** Section D to show the correct position of the as-required hydrant risers.

THIS ADDENDUM IS HEREBY MADE A PART OF THE BIDDING AND CONTRACT DOCUMENTS FOR THIS PROJECT AND IS BINDING AS IF PRINTED AND BOUND THEREIN. ALL BIDDERS SHALL ACKNOWLEDGE RECEIPT OF THIS ADDENDUM IN THE APPROPRIATE LOCATION ON THE BID FORM.

END OF ADDENDUM NO. FIVE (5)







**REVISIONS**

No.	Date	Description
1	02/29/2010	ISSUED FOR EXCAVATION AROUND SECONDARY CLARIFIER TANKS
2	03/29/2011	ISSUED FOR BUILDING PERMIT SUBMITTAL TO PERMITS (SECONDARY CLARIFIER COMPLEX)
3	06/10/2011	ISSUED FOR CONSTRUCTION (SECONDARY CLARIFIER COMPLEX)
4	07/07/2011	ADDENDUM NO. 3

**SC-2**  
OF  
—

**GMS, INC.**  
CONSULTING ENGINEERS  
611 N. WEBER, SUITE 300  
COLORADO SPRINGS, COLORADO 80903

PROJECT NO. 20166362  
GMS FILE NO. 2399

**NOTES:**

- THE CONTRACTOR SHALL VERIFY ALL SLAB DIMENSIONS AT THE SLUDGE WITHDRAWAL SUMP AND LEVEL BEARING SURFACE AT THE CENTER OF EACH TANK. THE CONTRACTOR SHALL VERIFY THE DIMENSIONS OF THE EQUIPMENT FOR PIPING AND EQUIPMENT DRAWINGS. REFER TO PROCESS SHOP SUBMITTAL DRAWINGS FOR RELATED REQUIREMENTS OF EQUIPMENT, PIPING AND APPURTENANCES.
- REFER TO PROCESS PIPING AND EQUIPMENT DRAWINGS AND APPROVED SHOP SUBMITTAL DRAWINGS FOR RELATED REQUIREMENTS OF EQUIPMENT, PIPING AND APPURTENANCES.
- I.O.C. = 5392.05' = TOP OF SLAB ELEVATION
- T.O.C. = TOP OF CONCRETE ELEVATION
- SEE SHEET G-3 FOR COORDINATE INFORMATION.

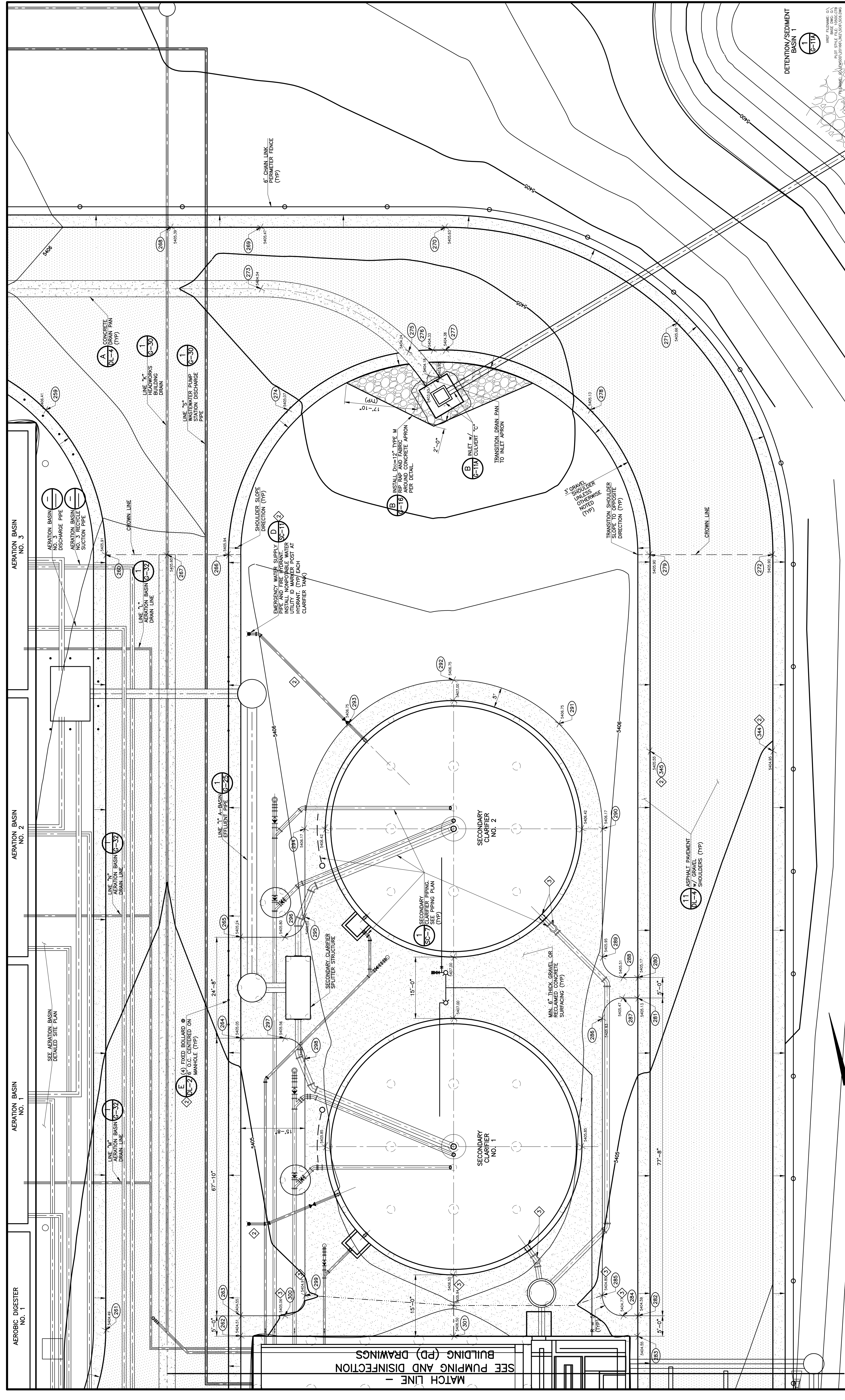
**1. SECONDARY CLARIFIER STRUCTURAL PLAN**  
SCALE: 1" = 5'

THIS DRAWING IS THE PROPERTY OF GMS, INC., AND IS NOT TO BE REPRODUCED, MODIFIED OR EXTENDED WITHOUT THE WRITTEN CONSENT OF GMS, INC. ANY REVISIONS TO THIS PROJECT EXCEPT BY AGREEMENT WITH THIS COMPANY.

6 2010 GMS, INC.







MATCH LINE -  
SEE PUMPING AND DISINFECTION  
BUILDING (PD) DRAWINGS

**DETAILED SITE PLAN**

**HAROLD D. THOMPSON REGIONAL WATER RECLAMATION FACILITY**  
**LOWER FOUNTAIN METROPOLITAN SEWAGE DISPOSAL DISTRICT**

**DETENTION/SEDIMENT BASIN 1**

1  
G-11A

XREF FILENAME: G:\PROJECTS\2016\20160301\160301\160301.dwg  
PLOT STYLE FILE: 160301.ctb  
PLOT DATE: 11/15/2016 10:58:00 AM

**GMS, INC.**  
CONSULTING ENGINEERS  
611 N. WEBER, SUITE 300  
COLORADO SPRINGS, COLORADO 80903

DRAWN: SVG  
DESIGNED: MMW  
CHECKED: BUS  
DATE: 2016  
PROJECT NO.: 20160302  
GMS FILE NO.: 2399

THIS DRAWING IS THE PROPERTY OF GMS, INC., AND IS NOT TO BE REPRODUCED, COPIED, OR MODIFIED WITHOUT THE WRITTEN CONSENT OF GMS, INC. ANY REVISIONS TO THIS PROJECT EXCEPT BY AGREEMENT WITH THIS COMPANY.

© 2016 GMS, INC.

NO.	DATE	DESCRIPTION
1	03/29/2011	ISSUED FOR BUILDING PERMIT SUBMITTAL TO PERMD (SECONDARY CLARIFIER COMPLEX)
2	06/10/2011	ISSUED FOR CONSTRUCTION (SECONDARY CLARIFIER COMPLEX)
3	07/07/2011	ADDENDUM NO. 5

**REVISIONS**

**1 SECONDARY CLARIFIER DETAILED SITE PLAN**

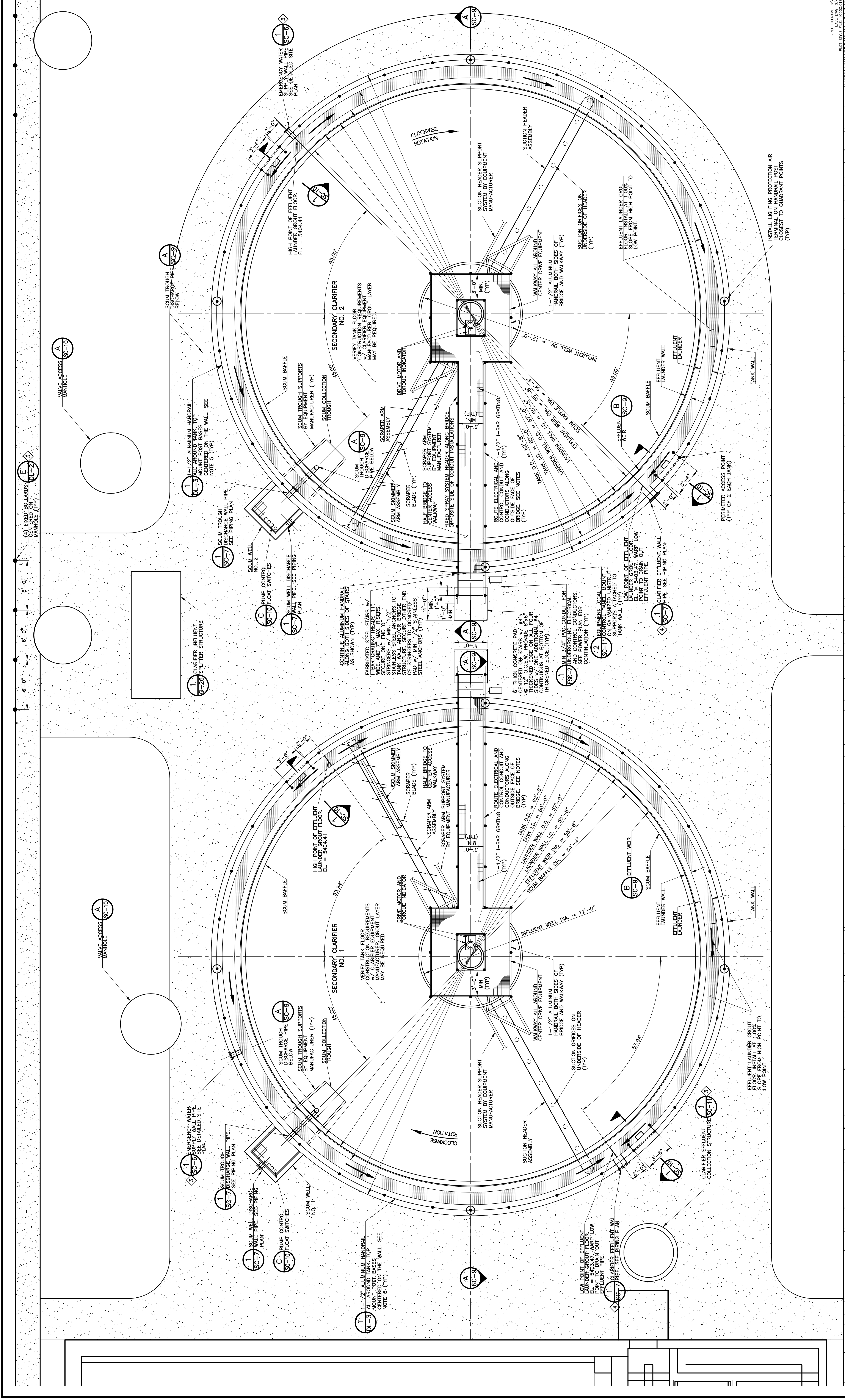
SCALE: 1" = 10'

SEE PUMPING AND DISINFECTION BUILDING (PD) DRAWINGS









**REVISIONS**

NO.	DATE	DESCRIPTION
1	10/12/2010	PRELIMINARY ISSUE FOR CONTRACTOR COST QUOTATIONS
2	03/29/2011	ISSUED FOR BUILDING PERMIT SUBMITTAL TO PERMITS (SECONDARY CLARIFIER COMPLEX)
3	06/10/2011	ISSUED FOR CONSTRUCTION (SECONDARY CLARIFIER COMPLEX)
4	07/07/2011	ADDENDUM NO. 3

THIS DRAWING IS THE PROPERTY OF GMS, INC., AND IS NOT TO BE REPRODUCED, MODIFIED OR EXTENDED WITHOUT THE WRITTEN CONSENT OF GMS, INC. THIS PROJECT IS THE PROPERTY OF GMS, INC. BY AGREEMENT WITH THIS COMPANY.

**PROCESS EQUIPMENT PLAN**  
**HAROLD D. THOMPSON REGIONAL WATER RECLAMATION FACILITY**  
**LOWER FOUNTAIN METROPOLITAN SEWAGE DISPOSAL DISTRICT**

**SC-8**  
 OF 1

DESIGNED BY: **MM**  
 CHECKED BY: **BUS**  
 DATE: **2010**  
 PROJECT NO.: **2010063382**  
 GMS FILE NO.: **2399**

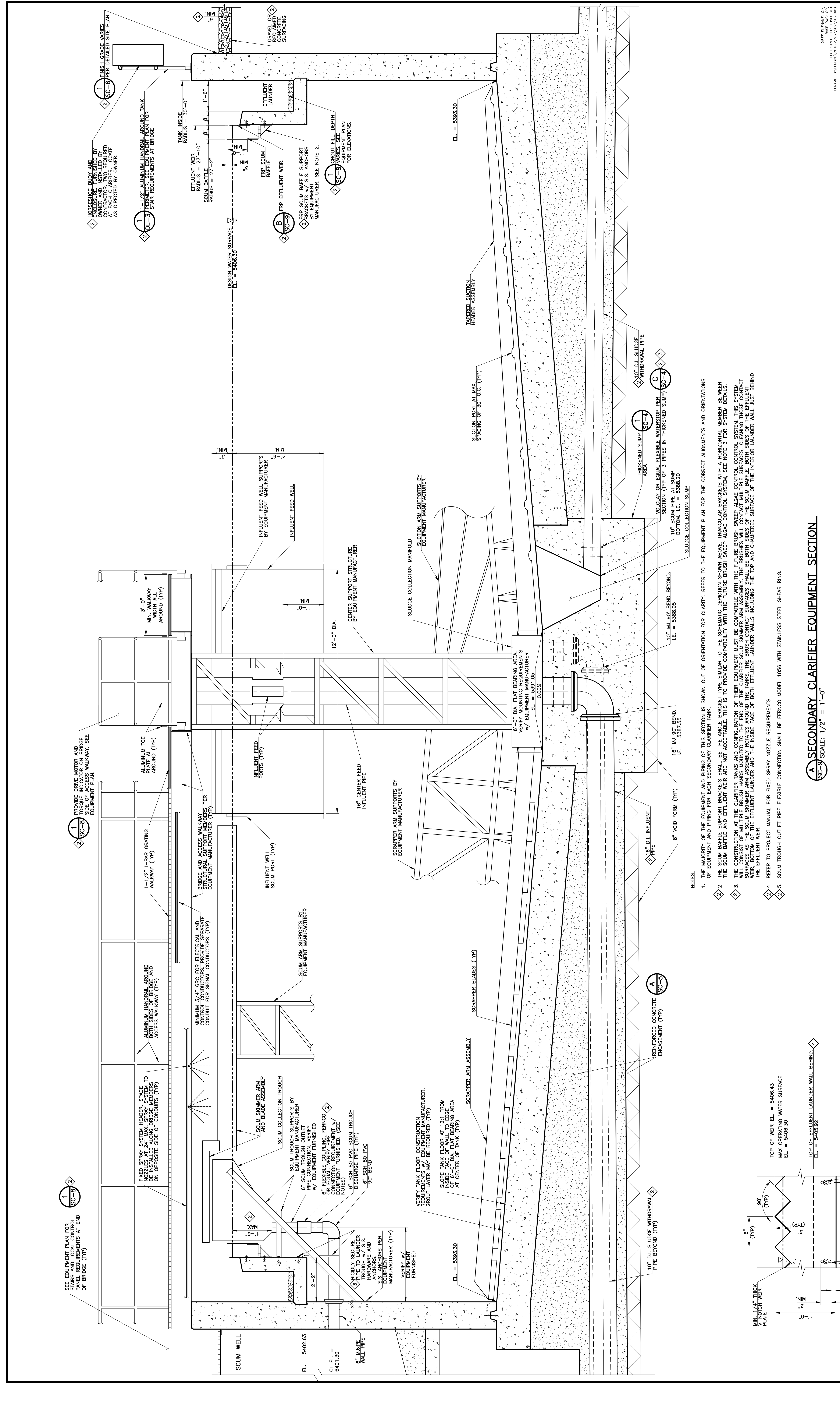
**GMS, INC.**  
 CONSULTING ENGINEERS  
 611 N. WEBER, SUITE 300  
 COLORADO SPRINGS, COLORADO 80903

**1 SECONDARY CLARIFIER EQUIPMENT PLAN**  
 SCALE: 1" = 5'

**NOTES:**

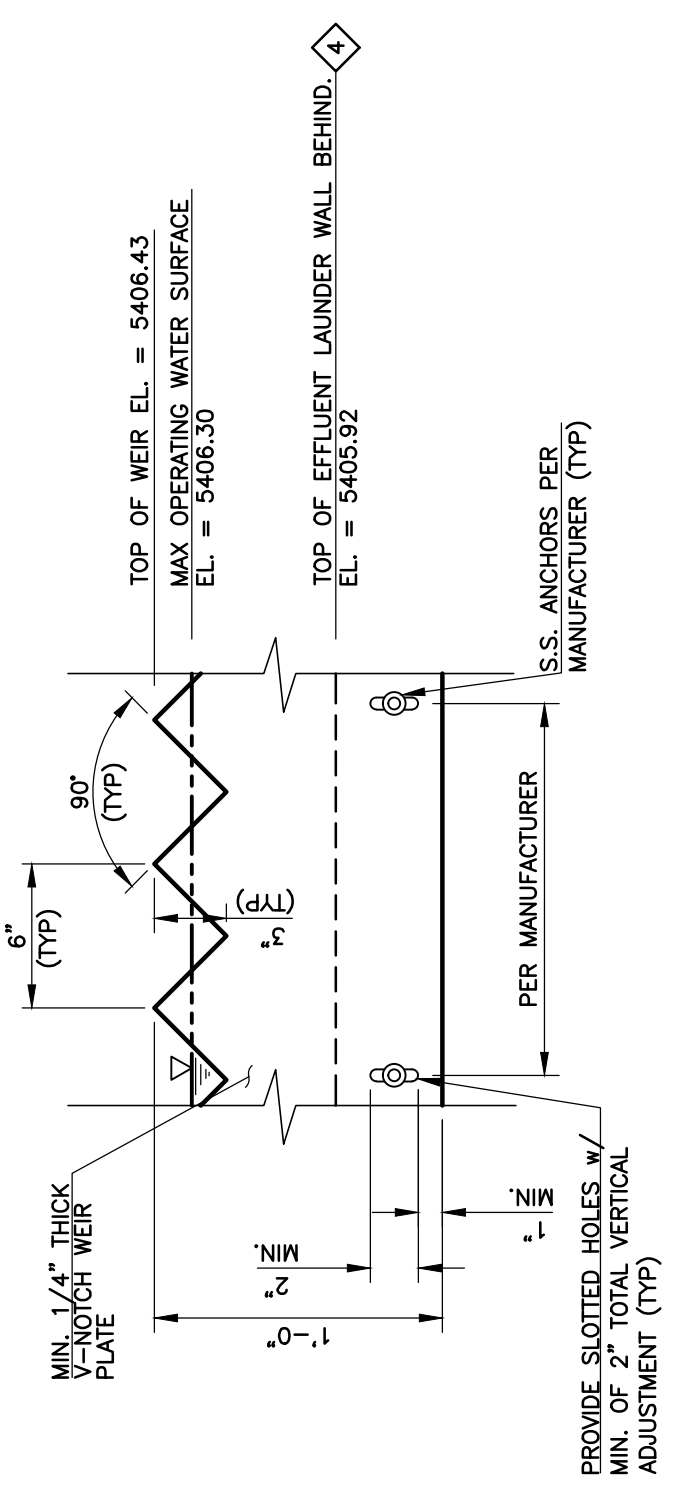
- POWER AND CONTROL CONDUITS SHALL BE ROUTED ALONG OUTSIDE FACE OF BRIDGE IN MINIMUM 3/4" GALVANIZED RIGID CONDUIT WHERE EXPOSED. SECURE CONDUIT TO BRIDGE STRUCTURE OR HANDRAILS AS NECESSARY.
- PROVIDE FLEXIBLE CONDUIT TO ALL EQUIPMENT.
- PROVIDE SEPARATE CONDUITS FOR POWER AND SIGNAL WIRES SO AS TO NOT INTERFERE WITH SIGNAL WIRE COMMUNICATION.
- REFER TO THE ELECTRICAL DRAWINGS FOR DETAILED ELECTRICAL AND CONTROL WORK REQUIREMENTS.
- HANDRAIL POST SPACING SHALL BE 6'-0" MAXIMUM. HANDRAIL BETWEEN POSTS MAY BE STRAIGHT ALIGNMENTS. CURVED HANDRAIL IS ACCEPTABLE BUT NOT REQUIRED.





- NOTES:
1. THE MAJORITY OF THE EQUIPMENT AND PIPING OF THIS SECTION IS SHOWN OUT OF ORIENTATION FOR CLARITY. REFER TO THE EQUIPMENT PLAN FOR THE CORRECT ALIGNMENTS AND ORIENTATIONS OF EQUIPMENT AND PIPING FOR EACH SECONDARY CLARIFIER TANK.
  2. THE SCUM BAFFLE SUPPORT BRACKETS SHALL BE THE ANGLE BRACKET TYPE SHOWN TO THE SCHEMATIC DETAIL. BRACKETS WITH A HORIZONTAL MEMBER BETWEEN THE SCUM BAFFLE AND EFFLUENT WEIR ARE NOT ACCEPTABLE. THIS IS TO PROVIDE COMPATIBILITY WITH THE FUTURE BRUSH SWEEP ALGAE CONTROL SYSTEM. SEE NOTE 3 FOR SYSTEM DETAILS.
  3. THE CONSTRUCTION AT THE CLARIFIER TANKS AND CONFIGURATION OF THEIR EQUIPMENT MUST BE COMPATIBLE WITH THE FUTURE BRUSH SWEEP ALGAE CONTROL SYSTEM. THIS SYSTEM WILL BE INSTALLED AND OPERATED IN THE FUTURE. THE BRUSH SWEEP ALGAE CONTROL SYSTEM SHALL BE INSTALLED AND OPERATED IN THE FUTURE. THE BRUSH CONTACT SURFACES AS THE SCUM SKIMMER ARM ASSEMBLY ROTATES AROUND THE TANKS. THE BRUSH CONTACT SURFACES SHALL BE BOTH SIDES OF THE SCUM BAFFLE, BOTH SIDES OF THE EFFLUENT WEIR, BOTTOM OF THE SCUM SKIMMER ARM ASSEMBLY AROUND THE TANKS. THE BRUSH CONTACT SURFACES SHALL BE BOTH SIDES OF THE SCUM BAFFLE, BOTH SIDES OF THE EFFLUENT WEIR, BOTTOM OF THE SCUM SKIMMER ARM ASSEMBLY AROUND THE TANKS. THE BRUSH CONTACT SURFACES SHALL BE BOTH SIDES OF THE SCUM BAFFLE, BOTH SIDES OF THE EFFLUENT WEIR.
  4. REFER TO PROJECT MANUAL FOR FIXED SPRAY NOZZLE REQUIREMENTS.
  5. SCUM TROUGH OUTLET PIPE FLEXIBLE CONNECTION SHALL BE FERROCO MODEL 1056 WITH STAINLESS STEEL SHEAR RING.

**A SECONDARY CLARIFIER EQUIPMENT SECTION**  
SCALE: 1/2" = 1'-0"



**B EFFLUENT WEIR DETAIL**  
SCALE: NONE

NO.	DATE	DESCRIPTION
1	10/12/2010	PRELIMINARY ISSUE FOR CONTRACTOR COST QUOTATIONS
2	03/29/2011	ISSUED FOR BUILDING PERMIT SUBMITTAL TO PERMITS (SECONDARY CLARIFIER COMPLEX)
3	06/10/2011	ISSUED FOR CONSTRUCTION (SECONDARY CLARIFIER COMPLEX)
4	07/07/2011	ADDENDUM NO. 5

**REVISIONS**

THIS DRAWING IS THE PROPERTY OF GMS, INC., AND IS NOT TO BE REPRODUCED, COPIED, OR MODIFIED OR USED FOR ANY OTHER PROJECT OR EXTENSION OF THIS PROJECT EXCEPT BY AGREEMENT WITH THIS COMPANY.

© 2010 GMS, INC.

**PROCESS EQUIPMENT AND PIPING SECTION**  
HAROLD D. THOMPSON REGIONAL WATER RECLAMATION FACILITY  
LOWER FOUNTAIN METROPOLITAN SEWAGE DISPOSAL DISTRICT

DESIGNED: MAM  
CHECKED: MAM  
DATE: 2010  
PROJECT NO.: 201005.362  
GMS FILE NO.: 2399

**GMS, INC.**  
CONSULTING ENGINEERS  
611 N. WEBER, SUITE 300  
COLORADO SPRINGS, COLORADO 80903

SHEET **SC-9** OF 1

WRF PLAN/NAME: 6A  
WRF STYLE FILE: 1000-01A  
FILE NO.: 1000-01A  
FILE NAME: G:\P\1000\01A\1000-01A.DWG

