



WEAVER CONSTRUCTION MANAGEMENT, INC.
 3679 S. Huron St., Suite 404
 Englewood, CO 80110
 Phone: (303) 789-4111 FAX: (303) 789-4310

SUBMITTAL TRANSMITTAL

December 19, 2011
Submittal No: 11280-002

PROJECT: **Harold Thompson Regional WRF**
 Birdsall Rd.
 Fountain, CO 80817
 Job No. 2908

ENGINEER: **GMS, Inc.**
 611 No. Weber St., #300
 Colorado Springs, CO 80903
 719-475-2935 Roger Sams

OWNER: **Lower Fountain Metropolitan
 Sewage Disposal District**
 901 S. Santa Fe Ave.
 Fountain, CO 80817
 719-382-5303 James Heckman

CONTRACTOR: **Whipps, Inc.**
 370 So. Athol Rd.
 Athol, MA 01331
 978-249-7924 KevinW@Whipps.com

SUBJECT: 11280 SS Slide Gates for the Pumping and Disinfection Building (SG-7 thru SG-10)

SPEC SECTION: 11280 - Slide Gates

PREVIOUS SUBMISSION DATES:

DEVIATIONS FROM SPEC: ___ YES X NO

CONTRACTOR'S STAMP: This submittal has been reviewed by Weaver General Construction and approved with respect to the means, methods, techniques, & safety precautions & programs incidental thereto. Weaver General Construction also warrants that this submittal complies with contracted documents and comprises on deviations thereto:

<p>Contractor's Stamp:</p> <p>Date: 12/19/11 Reviewed by: H.C. Myers <input checked="" type="checkbox"/> Reviewed Without Comments <input type="checkbox"/> Reviewed With Comments</p>	<p>Engineer's Stamp:</p>
--	---------------------------------

ENGINEER'S COMMENTS: _____



P.O. Box 1058 • 370 South Athol Rd.
Athol, Massachusetts 01331
Phone: (978) 249-7924
Fax: (978) 249-3072

12/16/11

Weaver Construction Management, Inc.
3679 So. Huron Street,
Suite 404,
Englewood, CO 80110

Subject: Harold D Thompson Regional WRF
Your P.O. # CO#1
Our Ref. # 20610 SUBMITTAL 02 (CO.#1)

Attn: John Jacob / Leslie Brown,

Please find attached (1) electronic copy of the following install, shop drawings & submittal information for the above-mentioned project for review and approval. Whipps Inc require approval / comments in writing before we can release for manufacture.

Project Specific Drawings

A-206-100 (A) Stainless Steel Slide Gate Engineering Standards
BC-921-474 (A) (2) Series 921 S.S. Slide Gate Install, 36" x 54" Tag: SG-7 & SG-9
BC-921-474-S2 (A) Series 921 Section Details.
BC-921-475 (A) (2) Series 921 S.S. Slide Gate Install, 25" x 54" Tag: SG-8 & SG-10

Standard Drawings / Misc

BC-101-063 (E) Whipps Type 101 Operator
ST-100-005 (B) 101 Adapter plate
Whipps (2) Year Warranty Agreement

The proposed equipment is our best interpretation of the latest versions of available contract documents. It is Whipps, Inc. policy that all equipment is fabricated to approved submittal drawings only. Verification of all elevations and dimensions relating to any existing and / or proposed structures is the responsibility of the reviewing engineer and the contractor, therefore we ask careful review is provided to ensure the equipment is properly fabricated to suit desired locations.

Please don't hesitate to contact us at your earliest convenience with any questions or concerns you may have during the review of this submittal.

Sincerely,

Andrew Coverdale.

Project Manager.
Whipps, Inc.

cc. Water Technology Group

Attn: Drew Goodyear

ENGINEERING STANDARDS

Whipps, inc.
370 South Athol Rd, Athol MA 01331

DATE
08/19/11

DRAWN BY
APC

S.O. NUMBER
20610

STAINLESS STEEL SLIDE GATES

DRAWING NUMBER
A-206-100

REV
A

GATE DESIGN TO AWWA STANDARD C561-04
WELDING TO AWS D1.6

SLIDE

- MIN THICKNESS 1/4" ALL PARTS
- MAX BENDING STRESS 15,000 PSI
- MAX BENDING DEFLECTION < 1/720 OF SPAN

FRAME

- MIN THICKNESS 1/4" ALL PARTS

STEM

- MAX UNSUPPORTED STEM LENGTH $\leq 200 L/r$ BASED ON PITCH DIAMETER

HOIST

- MAX 40# PULL @ SPECIFIED OPERATING HEAD

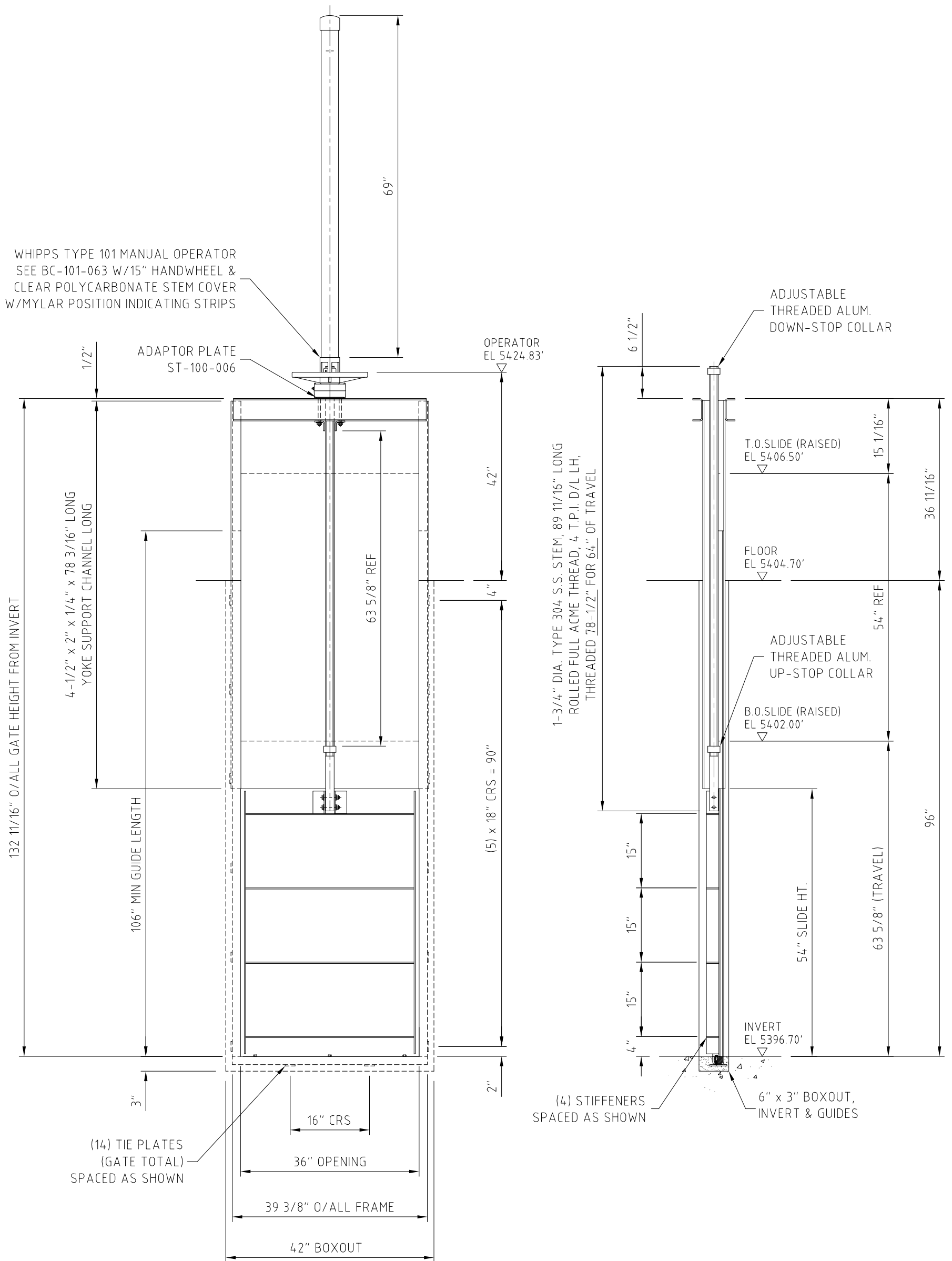
MATERIAL STANDARDS

SLIDE PLATE	ASTM A240, TYPE 304L STAINLESS STEEL
SLIDE STIFFENERS	ASTM A240, TYPE 304L STAINLESS STEEL
SLIDE STEM CONNECTOR	ASTM A240, TYPE 304L STAINLESS STEEL
FRAME GUIDE	ASTM A240, TYPE 304L STAINLESS STEEL
FRAME INVERT	ASTM A240, TYPE 304L STAINLESS STEEL
FRAME SEALS	ASTM D4020 UHMWPE
INVERT SEAL	ASTM D2000, 55-60 DUROMETER NEOPRENE
COMPRESSION CORD	ASTM D-2000 NITRILE
STEM	ASTM A276, TYPE 304 STAINLESS STEEL
STEM COVER	ASTM D3935 POLYCARBONATE W/ CAP & VENTS
STOP COLLARS	ASTM B221, 6061-T6 ALUMINUM
OPERATOR DRIVE SLEEVE	ASTM A584, BRONZE
ALUMINUM OPERATOR CASTINGS	ASTM B26, TYPE A380
GATE FASTENERS	ASTM A276, STAINLESS STEEL GRADE 304
ANCHOR FASTENERS	ASTM A276, STAINLESS STEEL GRADE 316

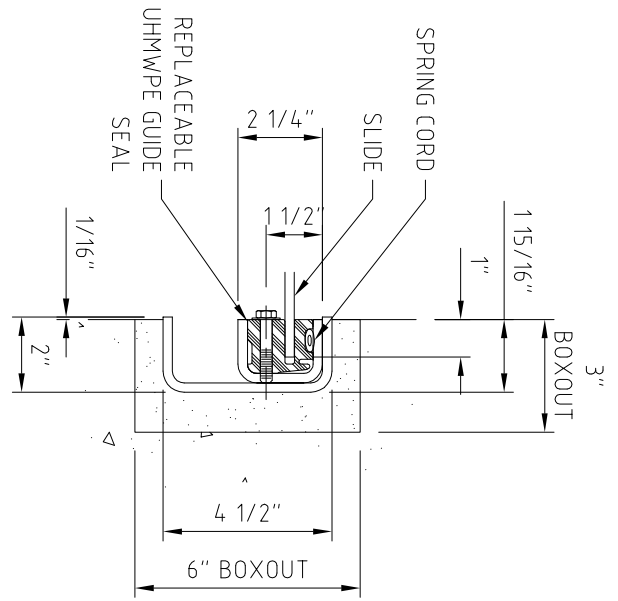
WHIPPS INC MANUFACTURES ALL STAINLESS STEEL FORMED SECTIONS FROM ASTM A240 PLATE.
ASTM A276 RELATES TO STAINLESS STEEL BAR (OPERATING STEM) & TUBE SECTIONS ONLY

FOR GATE SECTIONS SEE: BC-921-474-S2
 YOKE: 4-1/2" x 2" x 1/4" CHANNEL
 VERTICAL STIFFENERS: 2-1/2" x 1/4" FLAT BAR
 HORIZONTAL STIFFENERS: 2-1/2" x 1/4" FLAT BAR
 ESTIMATED GATE WEIGHT: 410 LB

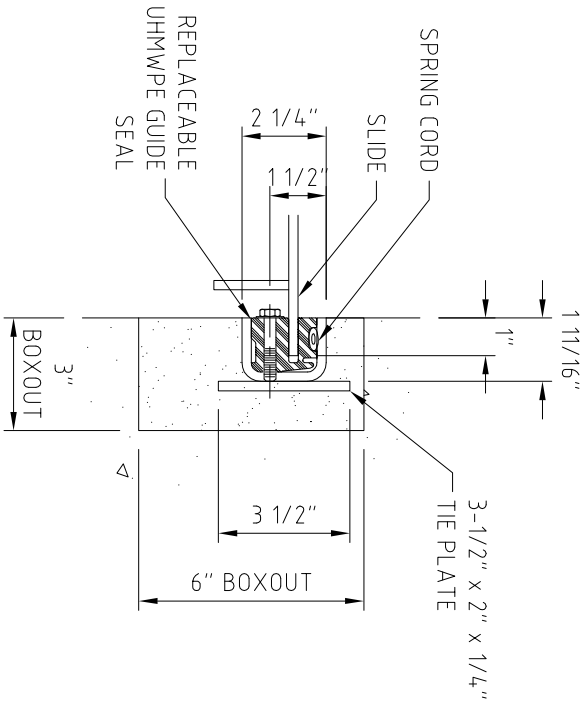
ALL OBSTRUCTIVE HAND RAILING /
 FLOORING TO BE MODIFIED BY OTHERS



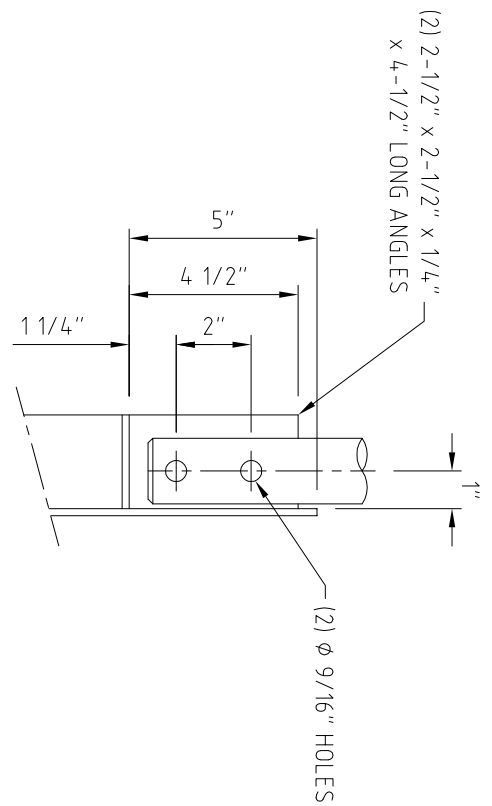
Title	SERIES 921 STAINLESS GATE			DO NOT SCALE THIS DRAWING Work to Dimensions Linear Dimensions are Inches	Requested Concrete Opening Tolerances Height & Width ±1/4" Squareness ±3/8 Diagonal	A	Original Issue	12/15/11	APC	APC	
	INSTALL. 36" x 54"										
Project	HAROLD D THOMPSON REG. WRF			Job No: #E5	Seating	Unseating	Rev.	Rev. Record	Date	Eng.	Chk.
	Location	UV CHANNEL 1 & 2 INFLUENT			Design Head	5.5'					
Dwg. No.		BC-921-474	S.O. No.	20610	Leakage Rate	GPM/ft of seal	0.1	0.1	THIRDS ANGLE PROJECTION		



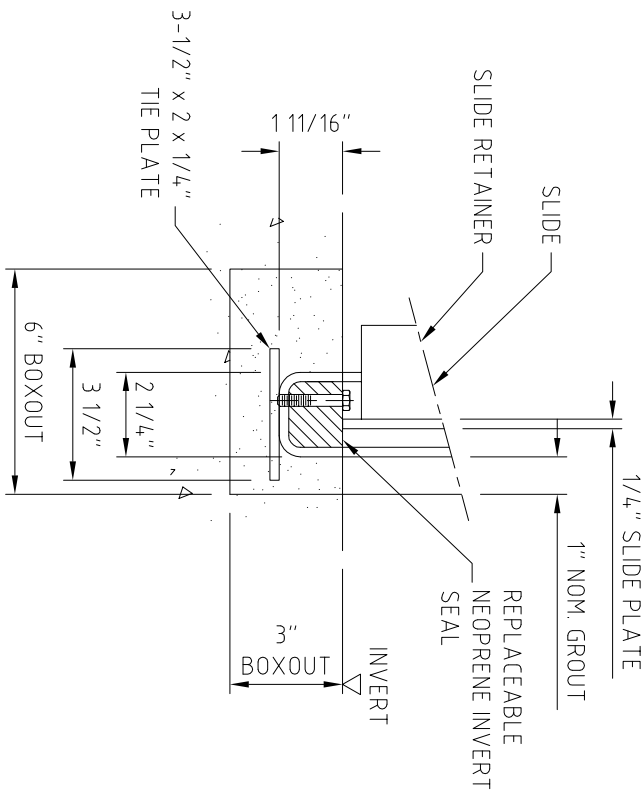
EMBEDDED GUIDE SECTION
(FLOOR LEVEL)



EMBEDDED GUIDE SECTION



STEM CONNECTOR DETAIL



EMBEDDED INVERT SECTION

Title
SERIES 921 SLIDE GATE SECTION DETAILS

Material **STAINLESS STEEL GRADE 304**

Drg. No. **BC-921-474-S2** S.O. No. **20610**

DO NOT SCALE THIS DRAWING
 Work to Dimensions
 Linear Dimensions are Inches

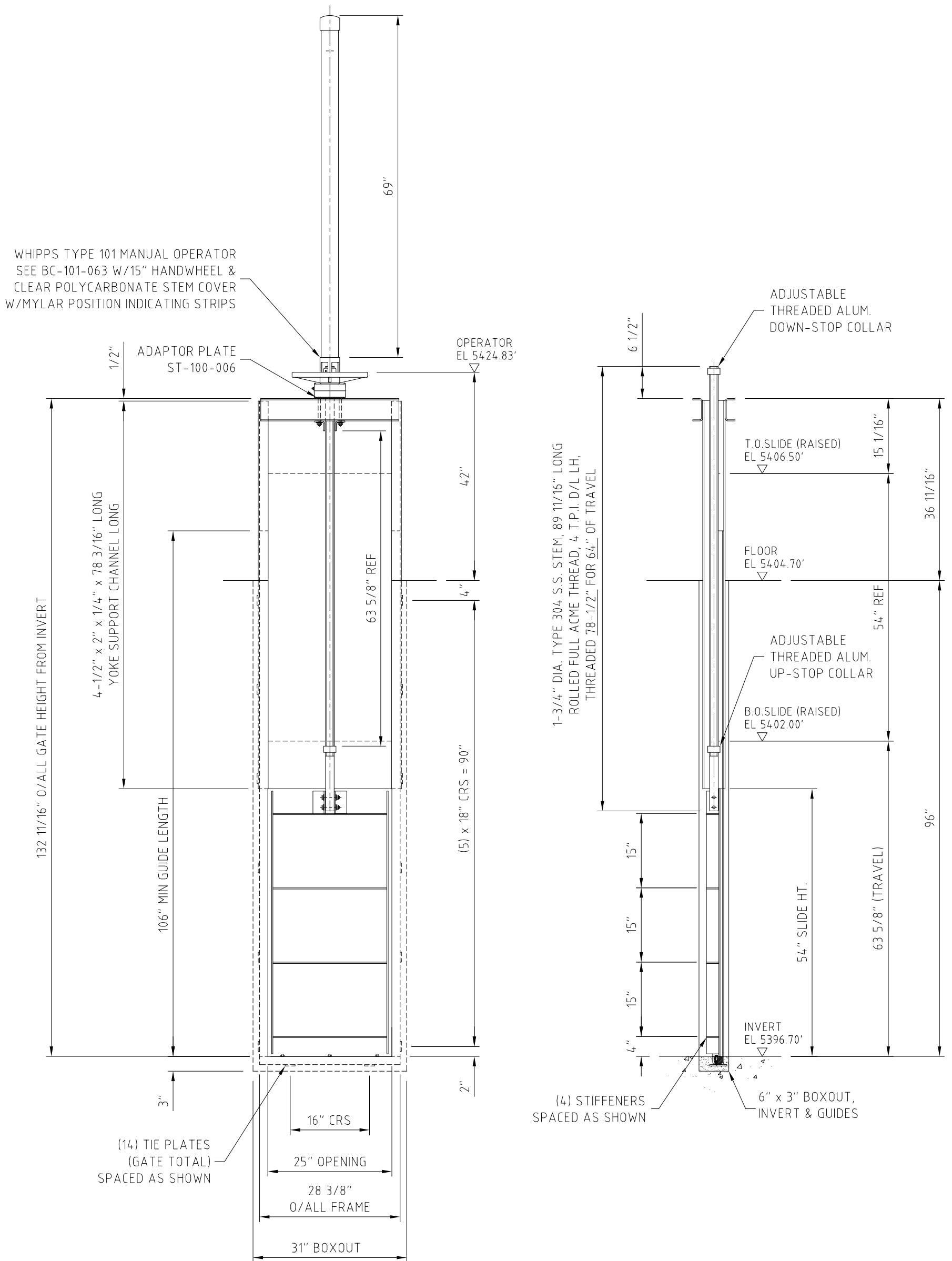
Scale: 1:5

THIRD ANGLE PROJECTION

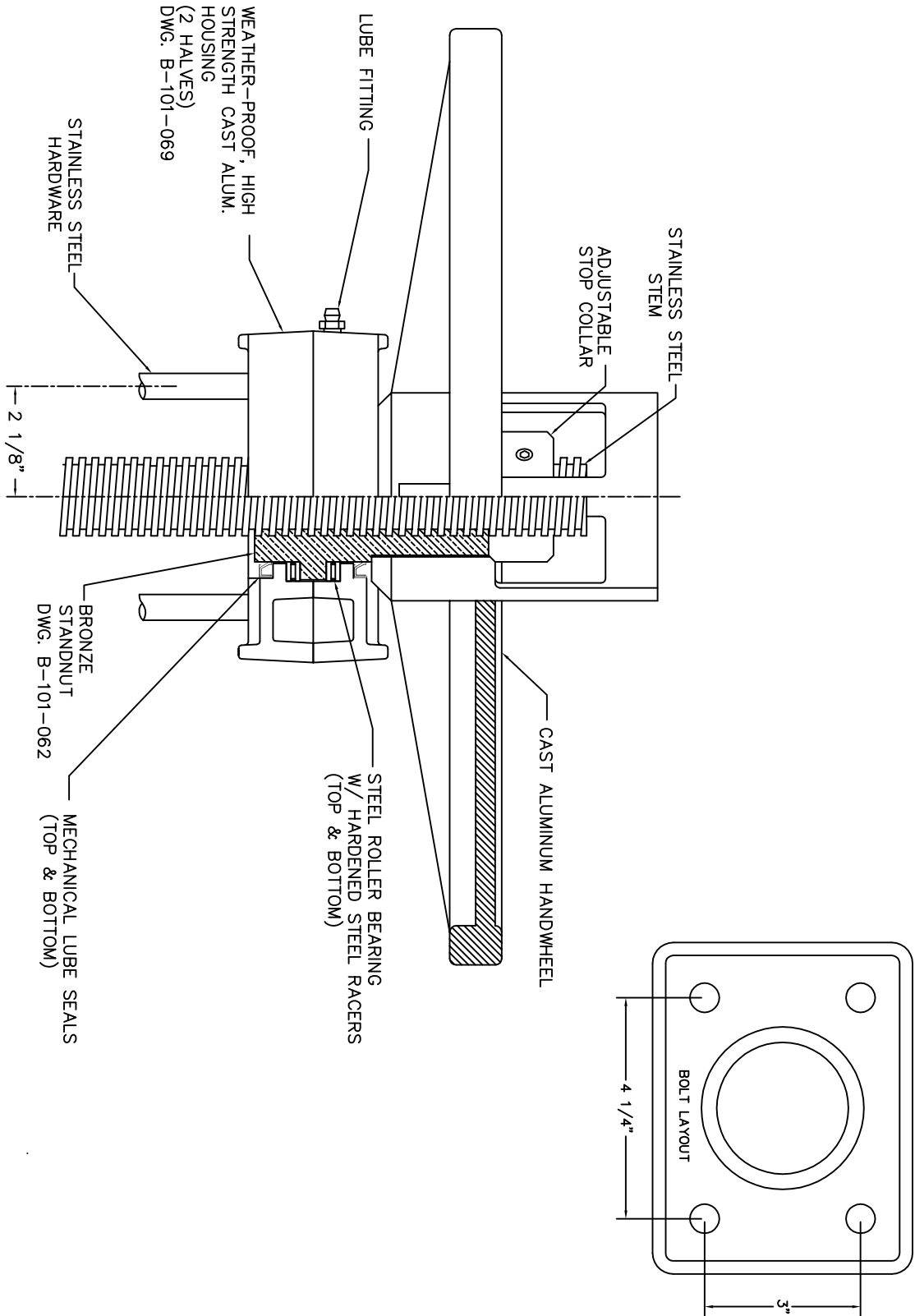
Rev.	A	Original Issue	12/16/11	APC	APC
	Rev.	Record	Date	Eng.	Chk.
		Whipps, inc.		370 SOUTH ATHOL RD. ATHOL, MA 01331	

FOR GATE SECTIONS SEE: BC-921-474-S2
 YOKE: 4-1/2" x 2" x 1/4" CHANNEL
 VERTICAL STIFFENERS: 2-1/2" x 1/4" FLAT BAR
 HORIZONTAL STIFFENERS: 2-1/2" x 1/4" FLAT BAR
 ESTIMATED GATE WEIGHT: 310 LB

ANY OBSTRUCTIVE HANDRAILING/
 FLOORING TO BE MODIFIED BY OTHERS



Title		Quantity: 2		Scale: 1:20		DO NOT SCALE THIS DRAWING					
SERIES 921 STAINLESS GATE		Tag No's: SG-8 & SG-10				Work to Dimensions					
Project		Job No: #F5		Seating		Unseating					
HAROLD D THOMPSON REG. WRF		Design Head		5.5'		5.5'		A		Original Issue	
Location		Leakage Rate		0.1		0.1		Rev.		Rev. Record	
UV CHANNEL 1 & 2 EFFLUENT		GPM/ft of seal						Date		Eng. Chk.	
Drg. No. BC-921-475		S.O. No. 20610						THIRD ANGLE PROJECTION		Whipps, inc.	
										370 SOUTH ATHOL ROAD ATHOL, MA 01331	



TITLE
TYPE 101 OPERATOR
GEAR RATIO 1:1

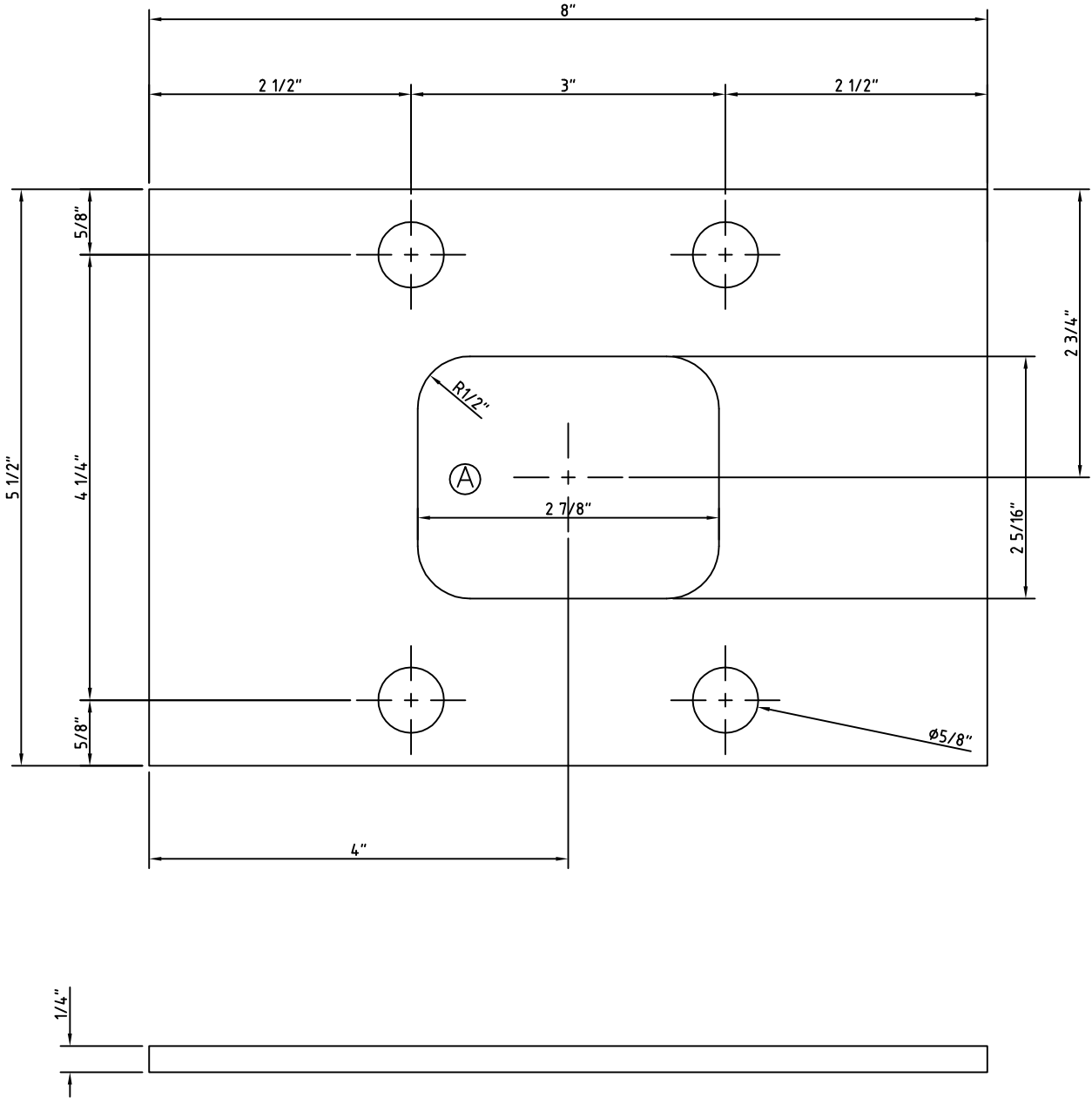
DATE 6/28/90	SCALE NTS	DWN BY GC	APPR BY
DRAWING NO. BC-101-063		S.O. NO.	

TOLERANCES	
MATERIAL:	

12-94	E	REVISED NOTES		VC
6-90	D	ADDED 2 1/8" DIM.		GC
6-90	C	ADDED STEM COVER NOTE		GC
6-90	B	REVISED H'WL & THD'D DIR		GC
10-89	A	ADDED ROLLER BRGS.		VC
DATE	SYM	REVISION RECORD	AUTH	DR

Whipps, Inc. 38 SOUTH MAIN STREET
 ATHOL, MA 01331

STANDARD TYPE 101 ADAPTER PLATE TO SUIT
STAINLESS STEEL YOKE



(A)

WHIPPS INC. PART No.	MATERIAL	QUANTITY	WEIGHT. EACH	MANUFACTURING TIME EACH
101-1	STAINLESS STEEL GRADE 304		3.25 lbs	6.0 MIN.
101-2	STAINLESS STEEL GRADE 316		3.25 lbs	6.0 MIN.

TITLE YOKE ADAPTER TOP PLATE
TYPE 101 OPERATOR

DATE 12/23/03 SCALE 1:1 DWN BY CG APPR BY

DRAWING NO. ST-100-005 S.O. NO.

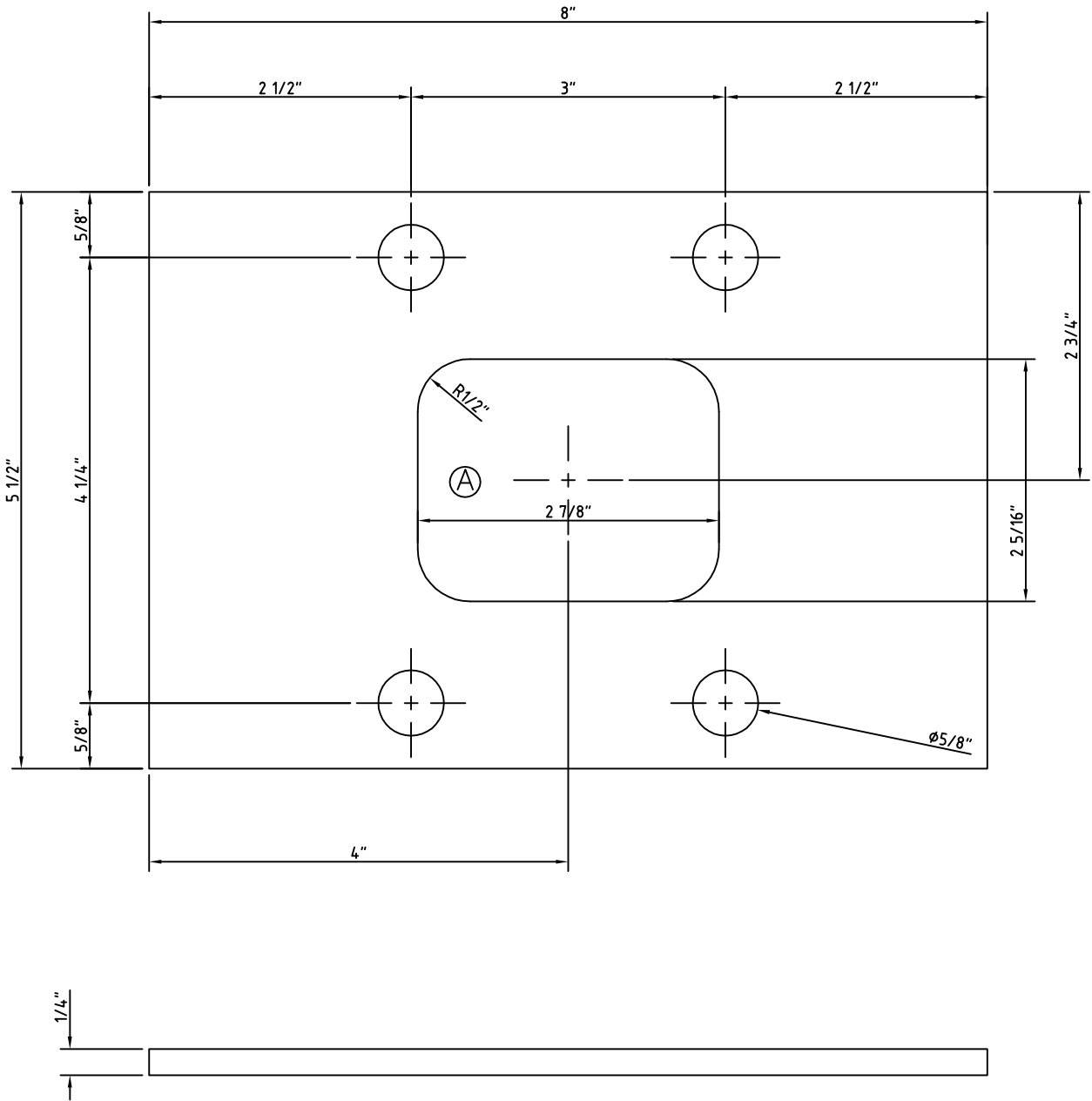
TOLERANCES

10/13/04	B	REVISED NOTES & HOLE SIZE	GW
2/4/04	A	8" WIDE	CG
DATE	SYM	REVISION RECORD	AUTH DR

MATERIAL:

WHIPPS inc. 370 SO. ATHOL RD.
ATHOL, MA 01331

STANDARD TYPE 101 ADAPTER PLATE TO SUIT
STAINLESS STEEL YOKE



Ⓐ

WHIPPS INC. PART No.	MATERIAL	QUANTITY	WEIGHT. EACH	MANUFACTURING TIME EACH
101-1	STAINLESS STEEL GRADE 304		3.25 lbs	6.0 MIN.
101-2	STAINLESS STEEL GRADE 316		3.25 lbs	6.0 MIN.

TITLE YOKE ADAPTER TOP PLATE
TYPE 101 OPERATOR

DATE 12/23/03 SCALE 1:1 DWN BY CG APPR BY

DRAWING NO. ST-100-005 S.O. NO.

TOLERANCES					
10/13/04	B	REVISED NOTES & HOLE SIZE			GW
2/4/04	A	8" WIDE			CG
DATE	SYM	REVISION RECORD	AUTH	DR	

WHIPPS inc. 370 SO. ATHOL RD.
ATHOL, MA 01331



P.O. Box 1058 • 370 South Athol Rd.
Athol, Massachusetts 01331
Phone: (978) 249-7924
Fax: (978) 249-3072

WHIPPS, INC. – 2 YEAR WARRANTY

Project: 20610 Harold D Thompson Reg. WRF

(2) 36" x 40" Series 921 Slide Gates	Tag: SG-2 & SG-6
(1) 24" x 40" Series 921 Slide Gate	Tag: SG-3
(2) 36" x 52" Series 921 Slide Gate	Tag: SG-1 & SG-5
(1) 36" x 28" Series Slide Gate	Tag: SG-4
(2) 36" x 54" Series 921 Slide Gates	Tag: SG-7 & SG-9
(2) 25" x 54" Series 921 Slide Gates	Tag: SG-8 & SG-10

The seller guarantees this equipment to be free of defects in material and workmanship for a period of two years from date of acceptance or first beneficial use. The seller agrees to repair or replace F.O.C. any parts breaking during the warranty period provided the Buyer gives immediate notice of such failure, and in the opinion of the Seller, the equipment shows unmistakable evidence of defective materials and/or workmanship. The cost to the Seller shall not exceed the cost of part repair or replacement and under no circumstances shall the Seller be liable for consequential damages or loss. The Seller's liability terminates entirely at the end of the warranty period.