



WEAVER CONSTRUCTION MANAGEMENT COMPANY
3679 S. Huron St., Suite 404
Englewood, CO 80110
Phone: (303) 789-4111 FAX: (303) 789-4310

SUBMITTAL TRANSMITTAL

January 18, 2012
Submittal No: 11280-003

PROJECT: **Harold Thompson Regional WRF**
Birdsall Rd.
Fountain, CO 80817
Job No. 2908

ENGINEER: **GMS, Inc.**
611 No. Weber St., #300
Colorado Springs, CO 80903
719-475-2935 Roger Sams

OWNER: **Lower Fountain Metropolitan
Sewage Disposal District**
901 S. Santa Fe Ave.
Fountain, CO 80817
719-382-5303 James Heckman

CONTRACTOR: **Golden Harvest, Inc.**
11944 Westar Lane
Burlington, WA 98233
360-757-4334 sherryd@goldenharvestinc.com

SUBJECT: Submittal Drawing G-27 - Weir Gate at AB Level Control Vault

SPEC SECTION: 11280 - Slide Gates

PREVIOUS SUBMISSION DATES:

DEVIATIONS FROM SPEC: ___ YES X NO

CONTRACTOR'S STAMP: This submittal has been reviewed by WCM and approved with respect to the means, methods, techniques, & safety precautions & programs incidental thereto. Weaver General Construction also warrants that this submittal complies with contracted documents and comprises on deviations thereto:

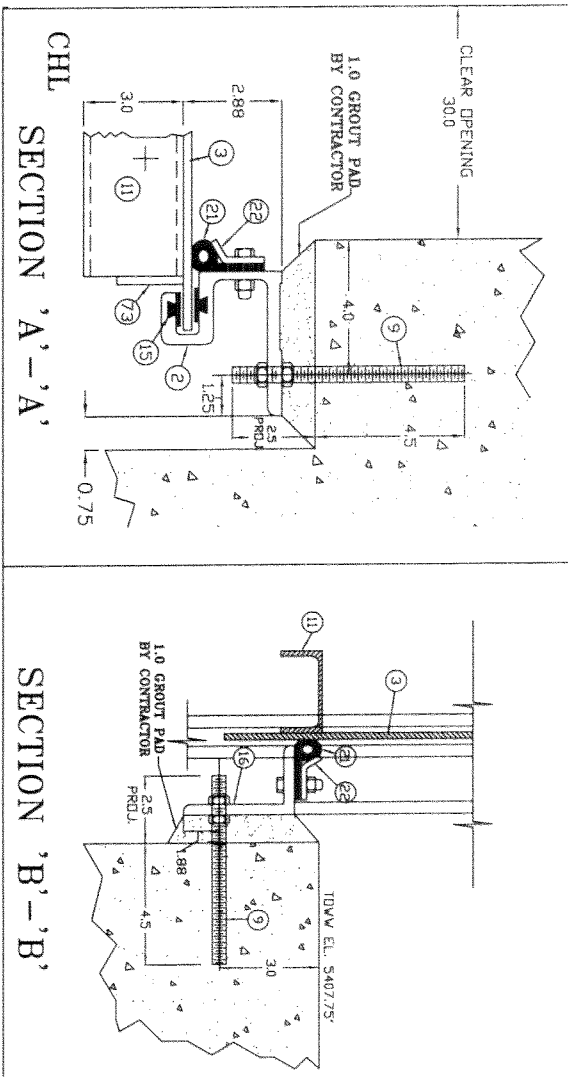
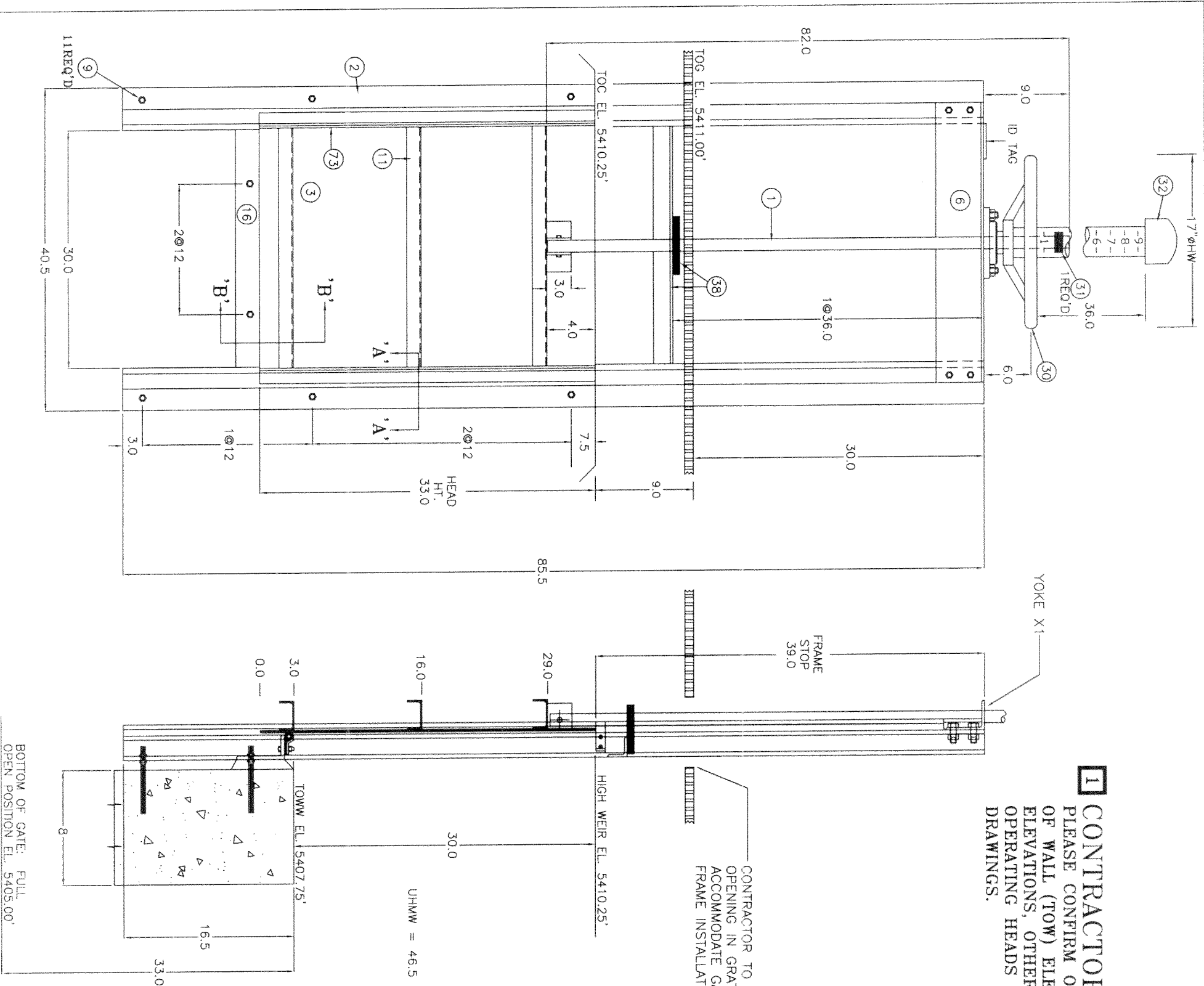
Contractor's Stamp:

Engineer's Stamp:

Date: 1/18/12
Reviewed by: H.C. Myers
(X) Reviewed Without Comments
() Reviewed With Comments

ENGINEER'S
COMMENTS: _____

1 CONTRACTOR/ENGINEER:
 PLEASE CONFIRM OR PROVIDE TOP
 OF WALL (TOW) ELEVATION, INVERT
 ELEVATIONS, OTHER ELEVATIONS, &
 OPERATING HEADS ON ALL
 DRAWINGS.



MD GH-60 ALUMINUM WEIR GATE MATERIAL LIST

N/R	DESCRIPTION	QUANTITY	UNIT
1	STEM	1.25	DIAMETER, S-STL W/ACME ROLLED THREADS
6	YOKE	16	MICRO IN. RMS OR LESS FINISH
11	STIFFENER	4.0	3.0 x 1.14 ALUMINUM ANGLE
30	OPERATOR	GH-1, NON-GEARED, HANDWHEEL, ANODIZED ALUM. HOUSING, MECH. SEALS ROLLER BEARING SUPPORTED BRONZE LIFT NUT, GREASE ZERK, OPEN DIRECTION ARROW	
38	STEM GUIDE	2.5	2.5x1.74 ALUMINUM ANGLE, W/UHMW STEM GUIDE BUSHING
73	VERT. STIFFENER	1/4	2.0 ALUMINUM FLAT BAR
190	CENTER STIFFENER	X	X ALUMINUM FLAT BAR
2	GUIDE RAIL	EXTRUDED ALUMINUM, SLB. PER FT. UNI FLANGE	
3	GATE HEAD	1/4	ALUMINUM PLATE
9	ANCHOR BOLT	1/2	7.0 S-STL ANCHOR ROD, W/2 NUTS
13	GUIDE BEARING BAR	UHMW POLYETHYLENE ASTM D-4020 IN DOVETAIL SLOTS PROVIDING OPERATING COEFFICIENT OF 0.125 OR LESS BETWEEN SLIDE AND GATE GUIDE	
16	HORIZONTAL SPIGOT	4.0	2.5 x 3/8 ALUMINUM ANGLE
21	P-SEAL	NEOPRENE RUBBER # 7274	
22	P-SEAL RING	3/16	X 2" S-STL FLAT BAR W/SLOTTED HOLES
31	STOP NUTS	BRONZE ASTM B-584	
32	STEM COVER	CLEAR BUTYRATE PLASTIC WITH NYLON STRIP INDICATOR CALIBRATED IN FEET AND INCHES WITH PVC END CAP	

* ANCHOR BOLTS ARE DESIGNED FOR USE WITH HULTI HIT-RE 500-SD ADHESIVE INJECTION SYSTEM OR EQUAL INSTALLED IN DRY CONCRETE (ADHESIVE BY CONTRACTOR)

MATERIAL SPECIFICATIONS:
 HARDWARE & FASTENERS = TYPE 304 SS ASTM-F593 / F594
 S-STL STEM = TYPE 304 SS ASTM-A276
 S-STL ANCHOR ROD = TYPE 304 SS ASTM-A276
 ALUMINUM SHAPES = 6061-T6
 ALUMINUM FORMED & PLATE = 6061-T6
 ALUMINUM EXTRUSION = 6061-T6
 ALUMINUM ROUND BAR = 6063-T5
 UHMWPE = ASTM-D4020
 NEOPRENE RUBBER = ASTM-D2000
 BRONZE = ASTM-B584

NOTE: FIELD COAT ALUMINUM IN CONTACT WITH CONCRETE WITH BITUMASTIC 50 MIN. 15 MINS DRY OR EQUAL APPLY IN FIELD W/CHI FURNISHED MATERIAL

THIS DRAWING IS THE PROPERTY OF GOLDEN HARVEST, INC. THE DESIGN, DATA AND INFORMATION CONTAINED WITHIN IS NOT TO BE USED, DISSEMINATED, LOANED OR REPRODUCED IN WHOLE OR IN PART WITHOUT THE WRITTEN CONSENT OF GOLDEN HARVEST, INC.

INSTALLATION NOTES for INSTALLER

FRAME OR FRAME COMPONENTS, PEDESTAL, WALL BRACKET, STEM GUIDE, AND OPERATOR MUST BE INSTALLED FLAT STRAIGHT AND PLUMB, SHIM AND BRACE AS NECESSARY.
 SEE OPERATION & MAINTENANCE MANUAL FOR ADDITIONAL INSTALLATION INFORMATION.
 TOLERANCES AS FOLLOWS:
 PARALLEL ± 1/8"
 COPLANAR ± 1/8"
 FLAT & STRAIGHT ± 1/16"
 SQUARE ± 1/8"

Max Seating Head = 3.0 FT	Max Unseating Head = 3.0 FT
Max Operating Head = 3.0 FT	Measured From GATE INVERT
30 x 30	GOLDEN HARVEST
MD GH-60	GOLDEN GATES
WALL MTD	1-800-338-6238
AL. WEIR GATE	P.O. BOX 287 Burlington, VA 98233
Project Description:	HAROLD D. THOMPSON REGIONAL WRF
For:	FOUNTAIN, CO
Contractor:	WEAVER CONSTRUCTION
Engineer:	GMS, INC.
Drawn By:	KH

BOTTOM OF GATE: FULL OPEN POSITION EL. 5405.00'

Date Drawn:	01-17-12
Revision:	3 - REQ'D
Revision:	
Revision:	
C.H. Drawing #:	1 OF 1
Contract Sit #:	G-27
Scale:	Job No.: 11-1230
FL = 20#	NTS