



Weaver

CONSTRUCTION MANAGEMENT

3679 S Huron Street, Suite 404 Englewood, Colorado 80110
Phone: (303) 789-4111 FAX: (303) 789-4310

SUBMITTAL TRANSMITTAL

April 9, 2012

Submittal No: 11280-006

PROJECT: **Harold Thompson Regional WRF**
Birdsall Rd.
Fountain, CO 80817
Job No. 2908

ENGINEER: **GMS, Inc.**
611 No. Weber St., #300
Colorado Springs, CO 80903
719-475-2935 Roger Sams

OWNER: **Lower Fountain Metropolitan
Sewage Disposal District**
901 S. Santa Fe Ave.
Fountain, CO 80817
719-382-5303 James Heckman

CONTRACTOR: **Golden Harvest, Inc.**
11944 Westar Lane
Burlington, WA 98233
360-757-4334 sherryd@goldenharvestinc.com

SUBJECT: Submittal Drawing G-22 for the MD GH-60 Aluminum Weir Gates SG-9, 10 & 11 @ the Aeration Basin Splitter Structure.

SPEC SECTION: 11280 - Slide Gates

PREVIOUS SUBMISSION DATES:

DEVIATIONS FROM SPEC: ___ YES X NO

CONTRACTOR'S STAMP: This submittal has been reviewed by Weaver Construction Management and, unless indicated otherwise, has been found to be in conformance with the intent of the contract documents.

Contractor's Stamp:

Date: 4/9/12
Reviewed by: Leslie Brown

(x) Reviewed Without Comments
() Reviewed With Comments

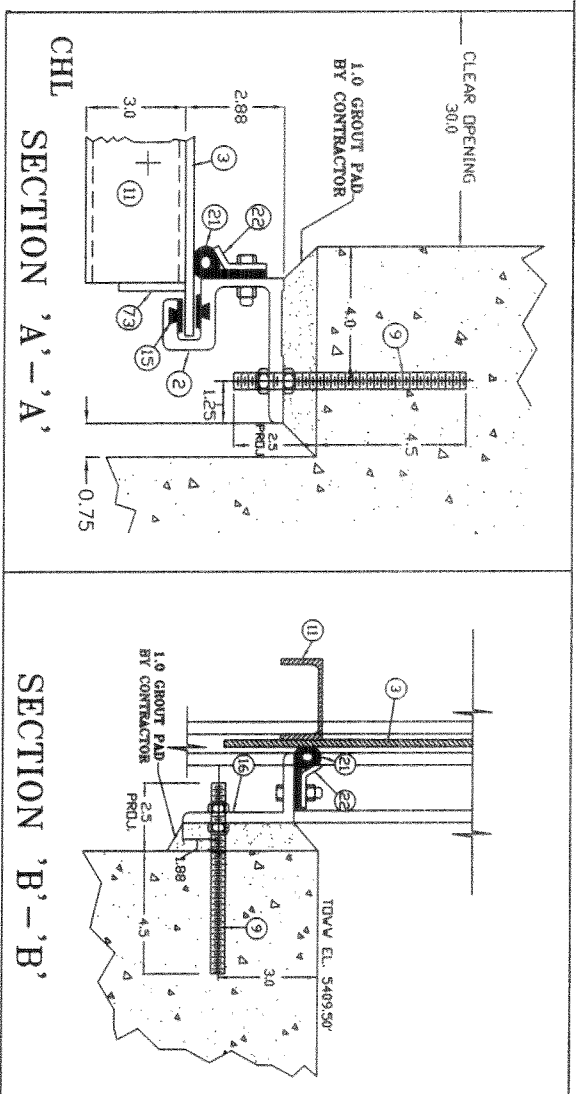
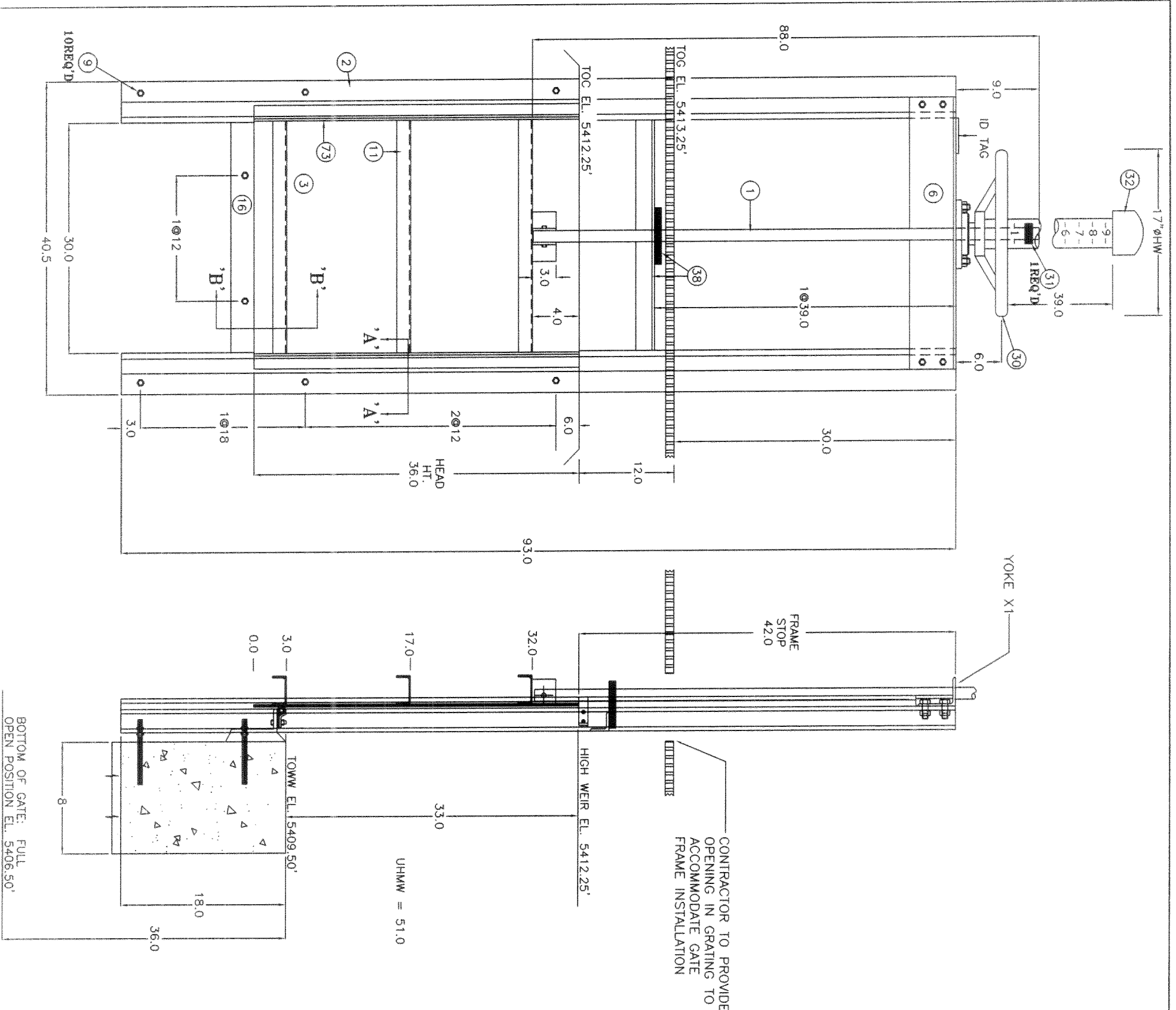
ENGINEER'S
COMMENTS:

Engineer's Stamp:

LETTER OF TRANSMITTAL

GOLDEN HARVEST, INC.
"GOLDEN GATES"
11944 WESTAR LANE
BURLINGTON, WA 98233
360-757-4334
sherryd@goldenharvestinc.com
Goldenharvestinc.com

TO: Weaver Construction Management, Inc.		Submittal #4 Drawing 3, Add On Gates	
3679 South Huron Street, Ste. 404			
Englewood, CO 80110			
PHONE: 303-789-4111		SENT VIA: john@weavercm.com	
JOB NAME: Harold D. Thompson Regional WRF / Fountain, CO			
GH JOB NO.	DATE	CUSTOMER P.O.	ATTENTION
11-1230	04-05-12	LOI	John Jacob
WE ARE SENDING YOU:			
COPIES	PAGES	DESCRIPTION	
1	1-1	Aluminum Weir Gate Drawing	
REMARKS:			
These documents are submitted for your approval. Manufacturing of this project will not proceed until we receive submittal approvals. FOR RECORD drawing submittals do not need to be approved.			
You may approve submittals by email or fax, by noting the approval on this form and returning it to Golden Harvest, Attn: Marcia or Sherry at 360-757-1135 (fax) or marciak@goldenharvestinc.com.			
If you have any questions about the status of your project, please contact Marcia or Sherry at 800-338-6238 or sherryd@goldenharvestinc.com.			



MD GH-60 ALUMINUM WEIR GATE MATERIAL LIST

1	STEM	1.25 DIAMETER, S-STL W/ACME ROLLED THREADS
6	YOKE	16 MICRO IN. RMS OR LESS FINISH
11	STIFFENER	4.0 x 3.0 x 1/4 ALUMINUM ANGLE
30	OPERATOR	CH-1, NON-GEARED, HANDWHEEL, ANODIZED ALUM. HOUSING, MECH. SEALS, ROLLER BEARING SUPPORTED BRONZE LIFT NUT, GREASE ZERK, OPEN DIRECTION ARROW
38	STEM GUIDE	2.5x2.5x1/4 ALUMINUM ANGLE, W/UHWM STEM GUIDE BUSHING
73	VERT. STIFFENER	1/4 x 2.0 ALUMINUM FLAT BAR
190	CENTER STIFFENER	1/4 x X ALUMINUM FLAT BAR
2	GUIDE RAIL	EXTRUDED ALUMINUM SLB PER FT. UNI FLANGE
3	GATE HEAD	1/4" ALUMINUM PLATE
4	ANCHOR BOLT	1/2" x 7.0 S-STL ANCHOR ROD, W/2 NUTS
15	GUIDE BEARING BAR	UHWM POLYETHYLENE ASTM D-4020 IN DOVETAIL SLOTS PROVIDING OPERATING COEFFICIENT OF 0.125 OR LESS BETWEEN SLIDE AND GATE GUIDE
16	HORIZONTAL SPIGOT	4.0 x 2.5 x 3/8 ALUMINUM ANGLE
21	P-SEAL	NEOPRENE RUBBER # 7274
21	P-SEAL	3/16" x 2" S-STL FLAT BAR W/SLOTTED HOLES
31	STOP NUTS	BRONZE ASTM B-584
32	STEM COVER	CLEAR BUTYRATE PLASTIC WITH NYLON STRIP INDICATOR CALIBRATED IN FEET AND INCHES WITH PVC END CAP

* ANCHOR BOLTS ARE DESIGNED FOR USE WITH HILT HIT-RE 500-SD ADHESIVE INJECTION SYSTEM OR EQUAL INSTALLED IN DRY CONCRETE (ADHESIVE BY CONTRACTOR)

MATERIAL SPECIFICATIONS:
 HARDWARE & FASTENERS = TYPE 304 SS ASTM-F393 / F394
 S-STL STEM = TYPE 304 SS ASTM-A276
 S-STL ANCHOR ROD = TYPE 304 SS ASTM-A276
 ALUMINUM SHAPES = 6061-T6
 ALUMINUM FORMED & PLATE = 6061-T6
 ALUMINUM EXTRUSION = 6061-T6
 ALUMINUM ROUND BAR = 6063-T5
 UHWMPE = ASTM-D4020
 NEOPRENE RUBBER = ASTM-D2000
 BRONZE = ASTM-B584

NOTE: FIELD COAT ALUMINUM IN CONTACT WITH CONCRETE WITH BUTYMASTIC 50. MIN. 15 MILS DRY OR EQUAL APPLY IN FIELD W/CHI FURNISHED MATERIAL

THIS DRAWING IS THE PROPERTY OF GOLDEN HARVEST, INC. THE DESIGN, DATA AND INFORMATION CONTAINED WITHIN IS NOT TO BE USED, DISSEMINATED, LOANED OR REPRODUCED IN WHOLE OR IN PART WITHOUT THE WRITTEN CONSENT OF GOLDEN HARVEST, INC.

INSTALLATION NOTES for INSTALLER

FRAME OR FRAME COMPONENTS, PEDESTAL, WALL BRACKET, STEM GUIDE, AND OPERATOR MUST BE INSTALLED FLAT STRAIGHT AND PLUMB, SHIM AND BRACE AS NECESSARY.
 SEE OPERATION & MAINTENANCE MANUAL FOR ADDITIONAL INSTALLATION INFORMATION.
 TOLERANCES AS FOLLOWS:
 PARALLEL ± 1/8"
 COPLANER ± 1/8"
 FLAT & STRAIGHT ± 1/16"
 SQUARE ± 1/8"

Max Seating Head = 3.0 FT	Max Unseating Head = 0.0 FT
Max Operating Head = 3.0 FT	Measured From Gate Invert
30 x 33	GOLDEN HARVEST
MD GH-60	GOLDEN GATES
WALL MTD	1-800-338-6238
AL. WEIR GATE	P.O. BOX 287 Burlington, VA 98233
Project Description:	HAROLD D. THOMPSON REGIONAL WRF
For:	FOUNTAIN, CO
Contractor:	WEAVER CONSTRUCTION
Engineer:	GMS, INC.
Drawn By:	KH
Scale: Job No.:	NTS 11-1230
Contract Sht #:	G-22

BOTTOM OF GATE: FULL OPEN POSITION EL. 5406.50'