



WEAVER CONSTRUCTION MANAGEMENT, INC.

3679 S. Huron St., Suite 404

Englewood, CO 80110

Phone: (303) 789-4111 FAX: (303) 789-4310

SUBMITTAL TRANSMITTAL

September 21, 2011

WCM Submittal No: 11314-001.B

PROJECT: Harold Thompson Regional WRF
Birdsall Rd.
Fountain, CO 80817
Job No. 2908

ENGINEER: GMS, Inc.
611 No. Weber St., #300
Colorado Springs, CO 80903
719-475-2935 Roger Sams

OWNER: Lower Fountain Metropolitan
Sewage Disposal District
901 S. Santa Fe Ave.
Fountain, CO 80817
719-382-5303 James Heckman

CONTRACTOR: Schloss Engineered Equipment, Inc.
10555 E. Dartmouth Ave., Suite 230
Aurora, CO 80014
303-695-4500 Linda Wood

SUBJECT: Deviation submittal information for pump/skid

SPEC SECTION: 11314 - Recessed Impeller Pumps

PREVIOUS SUBMISSION DATES: 9/13/11

DEVIATIONS FROM SPEC: ___ YES X NO

CONTRACTOR'S STAMP: This submittal has been reviewed by Weaver General Construction and approved with respect to the means, methods, techniques, & safety precautions & programs incidental thereto. Weaver General Construction also warrants that this submittal complies with contracted documents and comprises on deviations thereto:

Contractor's Stamp:

Engineer's Stamp:

Date: 9/21/11

Reviewed by: H.C. Myers

(X) Reviewed Without Comments

() Reviewed With Comments

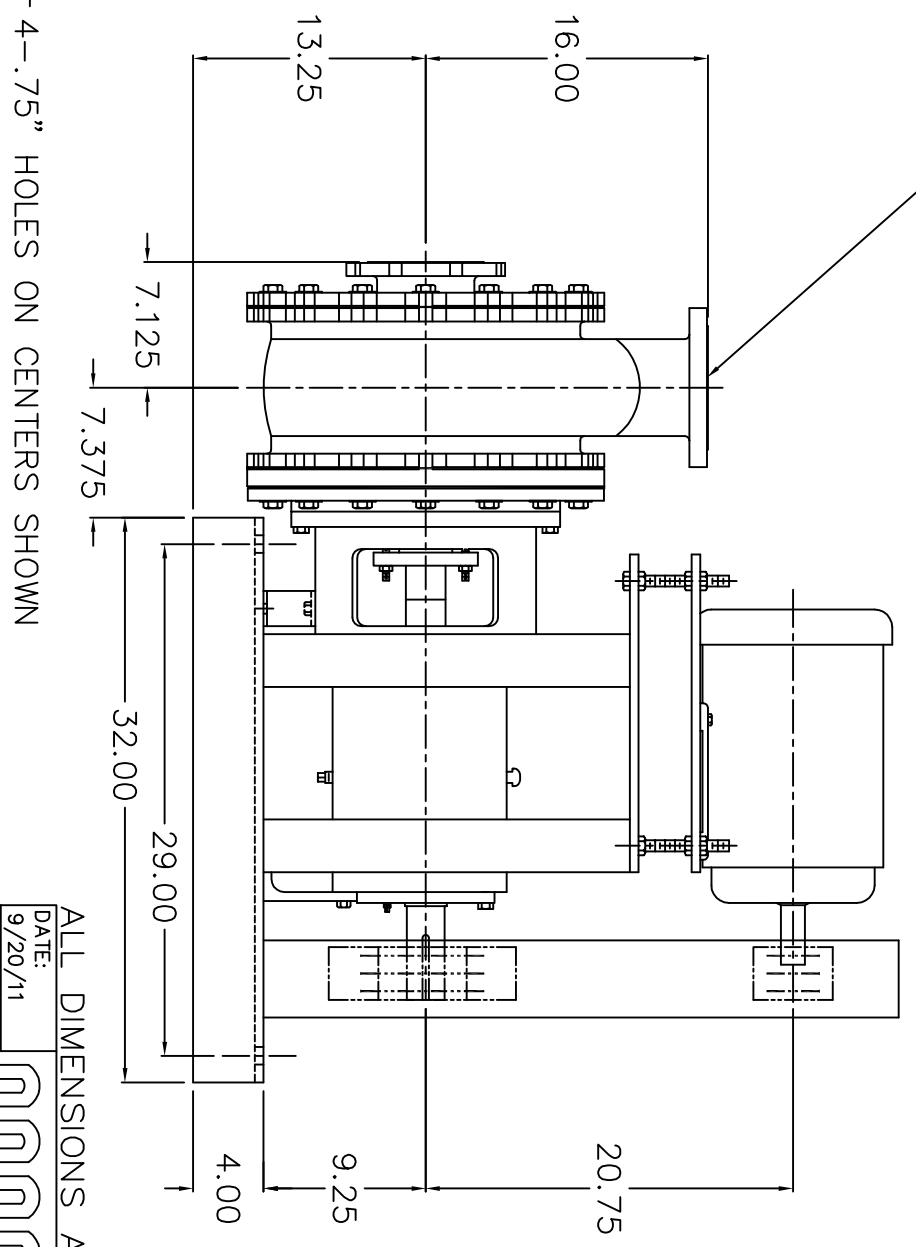
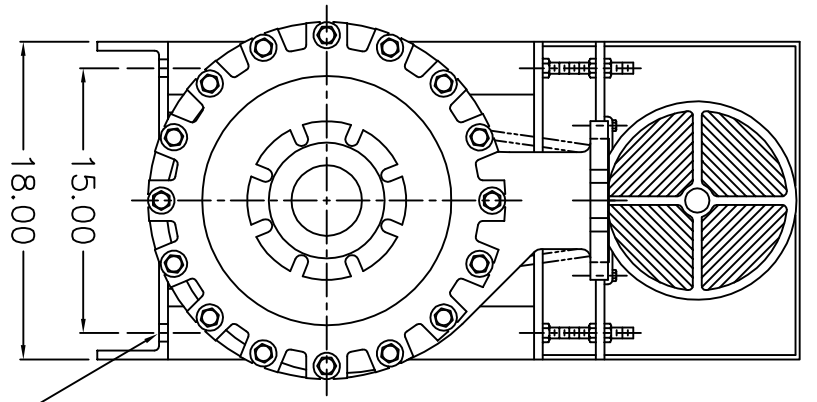
**ENGINEER'S
COMMENTS:**

Deviations:

- Submitted pump/skid dimensions differ from the pump/skid layout shown in the drawings.
- Based on the Contract drawings the approximate length of the pump/skid is 40" from suction to belt guard. The submittal drawing shows a length of 46.5" from suction to end of skid. This would shorten the suction FLG x FLG spool piece to approximately 7". Additionally, we propose to change this spool to FLG x PE with a uniflg. This would allow easier removal of the spool in the future for maintenance. This would also shorten the FLG x FLG horizontal discharge spool piece.
- The Contract drawings show the pump discharge being offset from the pump 'housing' while the submittal drawing locates the discharge at the center of the pump 'housing'. We do not see an issue with arrangement. This will eliminate one 90 bend and add a short FLG x FLG spool before the plug valve, and modify the length of the two horizontal spool pieces that both pumps discharge into.
- The Contract drawings show the width of the pump concrete pedestal at 2'-10" while the submittal drawing shows the skid width at 1'-6". We can reduce the overall width of the pump concrete pedestal to 2'-0".

JOB #: _____

← SUCTION AND DISCHARGE MATCH 150#
CLASS CAST IRON 4 INCH FLANGE



ALL DIMENSIONS ARE IN INCHES

ES&CO PUMPS

DATE:	9/20/11
FILE NAME:	HDP416A
DRAWN BY:	BRIAN B.
CHECKED BY:	JOHN I.
REVISED BY:	
REV. DATE:	

4X16 HDPL 100%
RECESSED IMPELLER PUMP
"C" FLOW CONFIGURATION
WITH SPECIAL 32" BASE