



WEAVER CONSTRUCTION MANAGEMENT, INC.
 3679 S. Huron St., Suite 404
 Englewood, CO 80110
 Phone: (303) 789-4111 FAX: (303) 789-4310

SUBMITTAL TRANSMITTAL

September 27, 2011
WCM Submittal No: 11361-001.B

PROJECT: Harold Thompson Regional WRF
 Birdsell Rd.
 Fountain, CO 80817
 Job No. 2908

ENGINEER: GMS, Inc.
 611 No. Weber St., #300
 Colorado Springs, CO 80903
 719-475-2935 Roger Sams

OWNER: Lower Fountain Metropolitan
 Sewage Disposal District
 901 S. Santa Fe Ave.
 Fountain, CO 80817
 719-382-5303 James Heckman

CONTRACTOR: Walker Process Equipment
 840 N Russell Ave
 Aurora, IL 60506-2853
 630-892-7921 x 5401 Linda Woods

SUBJECT: Resubmittal -WPE and WCM's response to review comments dated August 25, 2011.

SPEC SECTION: 11361

PREVIOUS SUBMISSION DATES: 8/17/11

DEVIATIONS FROM SPEC: ___ YES X NO

CONTRACTOR'S STAMP: This submittal has been reviewed by Weaver General Construction and approved with respect to the means, methods, techniques, & safety precautions & programs incidental thereto. Weaver General Construction also warrants that this submittal complies with contracted documents and comprises on deviations thereto:

<p>Contractor's Stamp:</p> <p>Date: 9/27/11 Reviewed by: H.C. Myers (X) Reviewed Without Comments () Reviewed With Comments</p> <p>ENGINEER'S COMMENTS:</p>	<p>Engineer's Stamp:</p>
---	---------------------------------

Submittal 11361-01.A response to comment A.1 and A.2

Weaver Construction Management Inc. response to Comments:

A.1. Response – WCM will install a sonotube inside the pipe to act as a form for the grout. Then we will lower the clarifier column down and level. Install grout against the sonotube and let it cure. Lift the clarifier center column up and remove the sonotube and reset the clarifier center column and level.

A.2. Response – WCM has reviewed the WPE submittal and we have not identified any equipment or installation issues.

TABLE OF CONTENTS

	<u>No. of Pages/Dwg. No.</u>
Certificate of Design.....	1 of 1
* Resubmittal Comments.....	1 thru 3
* Equipment Specifications.....	1 thru 8
Paint Specifications.....	1 and 2
AGMA Calculations.....	1 thru 6
* Suction Header Hydraulic Calculations.....	1 thru 3
Gearmotor Information.....	1 thru 9
Drive Parts List Drawing.....	D705-46884-171
Torque Indicator Box Assembly.....	C505-46818-171
Limit Switch Information.....	1 thru 3
* Control Panel Information.....	1 thru 28
Control Panel Drawing.....	AM40811TLC 1 & 2
* Handrail Information.....	1 thru 5
Grating Information.....	1 thru 3
Weir & Baffle Information.....	1 and 2
** Weir & Baffle Drawing.....	5523-1 Rev. 2
Expansion Anchor Information.....	1 thru 6
General Arrangement Drawing – PLAN.....	D205-70549-167
* General Arrangement Drawing – ELEV.....	D205-70550-167A
* Skimmer Erection Diagram.....	D205-62171-201
* Scum Trough Erection Diagram.....	C605-71001-200
Scum Trough Flushing Gate Erection Diagram.....	C605-70108-292
* Anchor Location Drawing.....	D105-70551-166A
* Erection Diagram – Flight & Squeegee.....	A605-35022-292
* Erection Diagram – Suction Header/Manifold Assembly.....	A605-40165-292
* Erection Diagram – Sludge Manifold Seal - Upper.....	A605-38955-292
* Erection Diagram – Sludge Manifold Seal - Lower.....	A605-38956-292
* Erection Diagram – Wearing Strip – Center Column.....	A605-40168-292
* Scum Trough Detail Drawing.....	D405-70590-854
* Tank Loads.....	B205-71000-167

FOUNTAIN, COLORADO
HAROLD D. THOMPSON REGIONAL
WATER RECLAMATION FACILITY
SPEC. SECTION 11361 - CIRCULAR CLARIFIER
SLUDGE COLLECTION EQUIPMENT
MODEL "RSMTP" CIRCULAR CLARIFIERS
W.P.E. CONTRACT NO. Q10600A

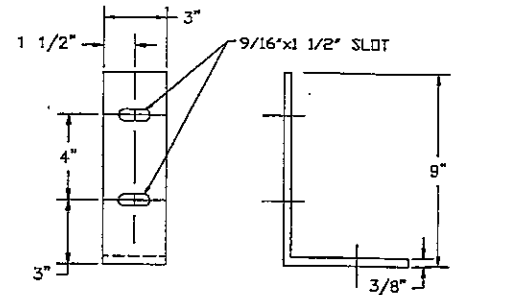
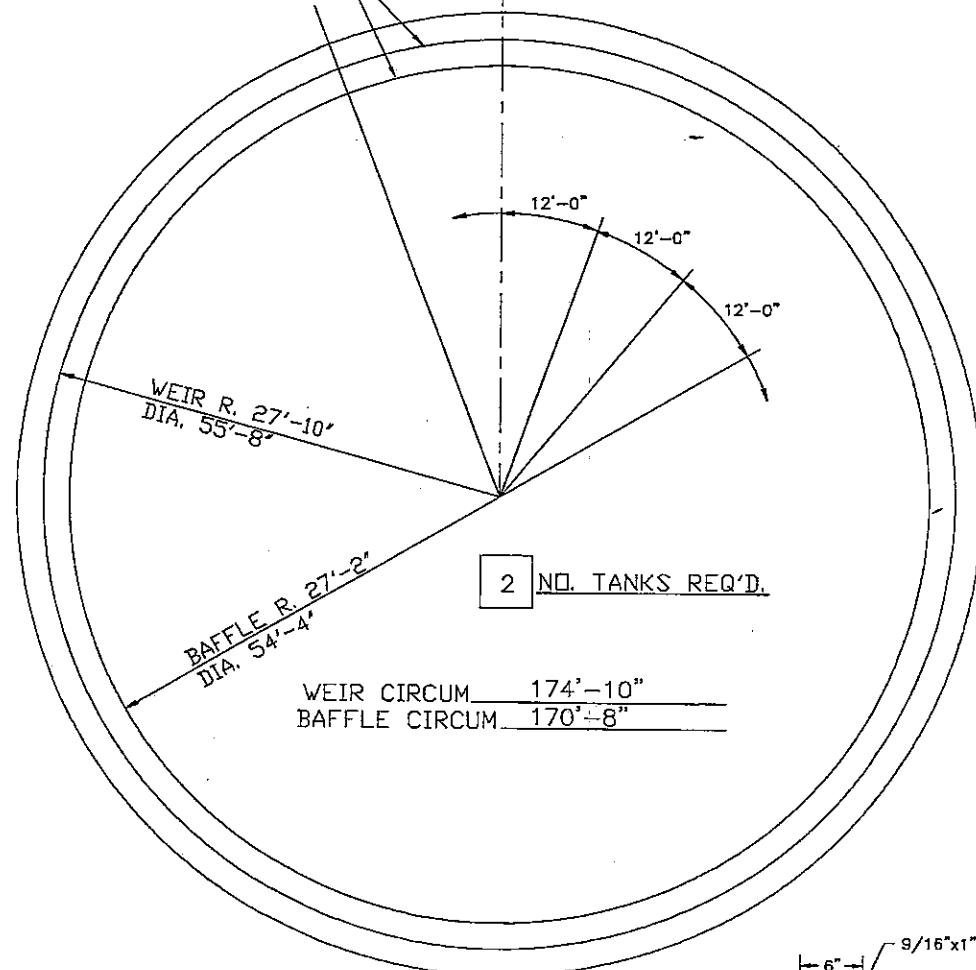


Division McNish Corporation

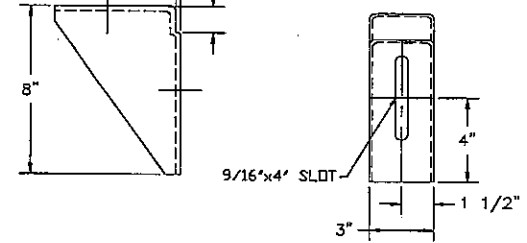
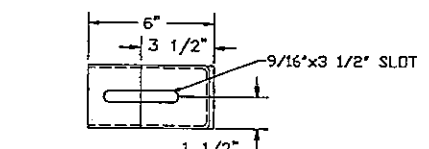
840 North Russell Avenue
Aurora, Illinois
(630) 892-7921

Dedicated to the
Water and Wastewater
Industry

FIELD CUT CLOSURE WEIR & BAFFLE PLATE

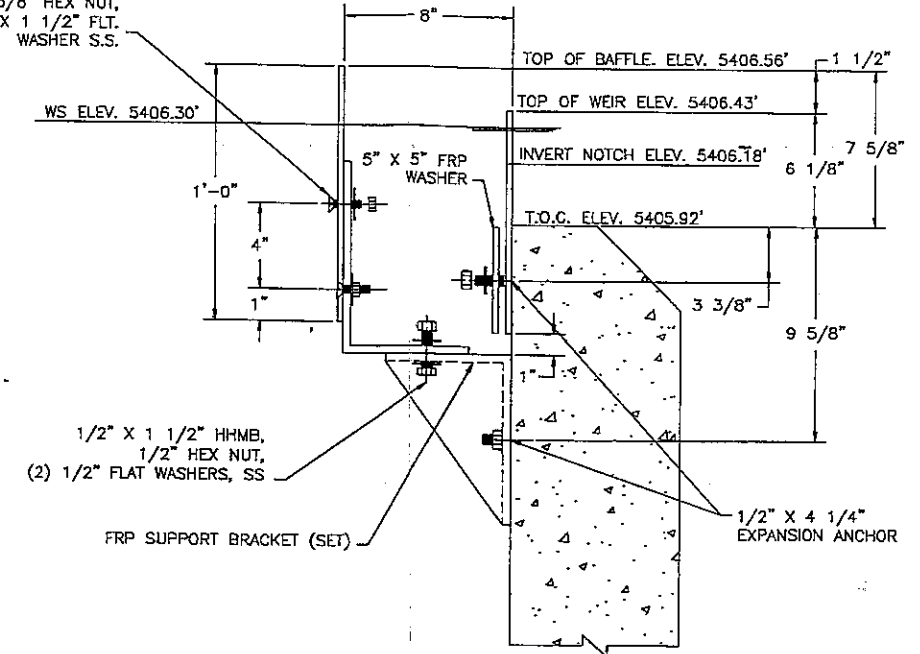


UPPER BAFFLE SUPPORT BRACKET



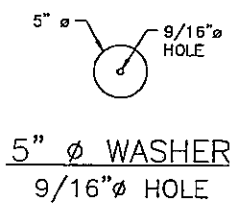
LOWER BAFFLE SUPPORT BRACKET

3/8" X 1 1/2" FHMB,
3/8" HEX NUT,
3/8" X 1 1/2" FLT. WASHER S.S.

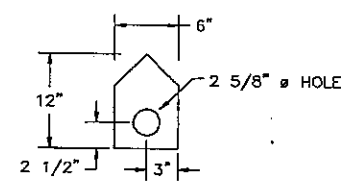


WALL MOUNTING DETAIL
SCALE - 2 : 1

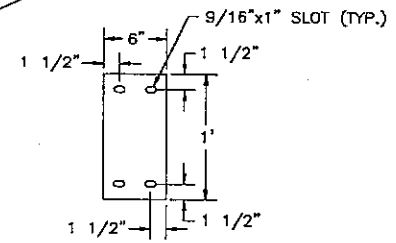
QTY.	MAT'L	DESCRIPTION	SIZE
30	FRP	WEIR PLATES	12" x 1/4" x 12'-0" (3" ON 6")
30	FRP	WEIR BUTT PLATES	12" x 1/4" x 6"
180	FRP	5" WASHERS	
30	FRP	BAFFLE PLATES	12" x 1/4" x 12'-0"
30	FRP	BAFFLE BUTT PLATES	12" x 1/4" x 6"
90	FRP	BAFFLE SUPPORT BRACKETS (UPPER)	3/8" THICK / L-SHAPED
90	FRP	BAFFLE SUPPORT BRACKETS (LOWER)	3/8" THICK / STANDARD
90	316 S.S.	HHMB	1/2" x 1 1/2"
90	316 S.S.	HEX NUTS	1/2"
180	316 S.S.	FLAT WASHERS	1/2"
300	316 S.S.	FHMB	3/8" x 1 1/2"
300	316 S.S.	HEX NUTS	3/8"
300	316 S.S.	FLAT WASHERS	7/16" ID x 1 1/2" OD
270	316 S.S.	EXPANSION ANCHORS	1/2" x 4 1/4"



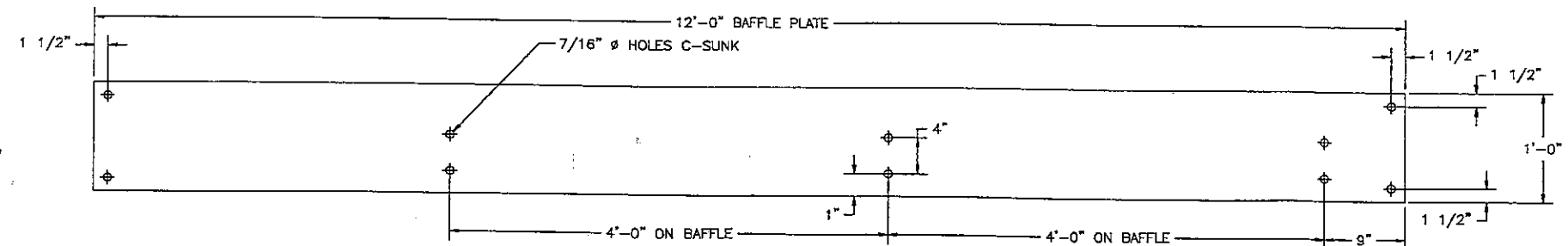
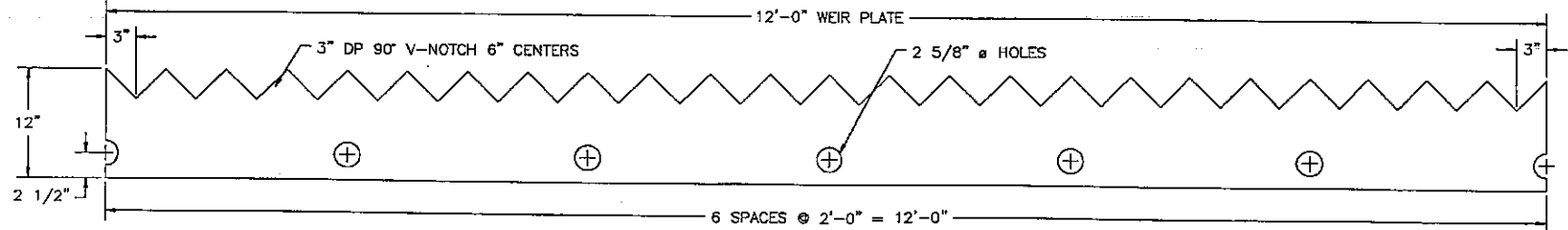
5" Ø WASHER
9/16" Ø HOLE



WEIR BUTT PLATE



BAFFLE BUTT PLATE



ANCHOR SPACING FOR BAFFLE SUPPORT
ON CONCRETE WALL TO BE 4'-1 1/8"

MFG WATER TREATMENT ("WATRE") has no responsibility for the contract design of the product or the contract specifications. WATRE has been selected to manufacture this product, the customer agrees to indemnify and hold WATRE harmless from and against all liability relating to this product, its performance, merchantability and fitness for purpose (including all liability for claims, suits, judgements and expenses), unless the product as manufactured by WATRE does not conform to the contract design and specifications set or WATRE'S shop drawings approved by the customer.

FOUNTAIN, CO -- AMWELL

NO.	REVISIONS	DATE
1	REVISED PER COMMENTS	8-5-11
2	REVISED NOTCH SPACING	9-16-11

MFG WATER TREATMENT PRODUCTS COMPANY
55 4th AVENUE CITY, PA 16438
PHONE: (814) 438-3988 FAX: (814) 438-8538
SCALE TITLE: WEIR & BAFFLE DETAILS - TWO TANKS
FOUNTAIN, CO

DIVISION : MFG/WTP
DRAWN BY : J. COLLINS
CHECKED BY :
APPROVED :
DATE : 4-14-11

SHEET NO.
5523-1