



**WEAVER GENERAL CONSTRUCTION COMPANY**  
 3679 S. Huron St., Suite 404  
 Englewood, CO 80110  
 Phone: (303) 789-4111 FAX: (303) 789-4310

**SUBMITTAL TRANSMITTAL**

November 3, 2011  
WGC Submittal No: 02641-001.A

**PROJECT:** Harold Thompson WRF  
 Birdsall Rd.  
 Fountain, CO 80817  
 Job No. 2908

**ENGINEER:** GMS, Inc.  
 611 No. Weber St., #300  
 Colorado Springs, CO 80903  
 719-475-2935 Roger Sams

**OWNER:** Lower Fountain Metropolitan  
 Sewage Disposal District  
 901 S. Santa Fe Ave.  
 Fountain, CO 80817  
 719-382-5303 James Heckman

**CONTRACTOR:** Superior Sales Inc  
 13301 W. 43rd Drive #11  
 Golden, CO 80403  
 Phone 303-279-3600 Jim Warner

**SUBJECT:** Resubmittal for Troy Rising Stem Mud Valves – Submittal Review Comments Letter

**SPEC SECTION:** 02615

**PREVIOUS SUBMISSION DATES:** None

**DEVIATIONS FROM SPEC:** \_\_\_ YES  X  NO

**CONTRACTOR'S STAMP:** This submittal has been reviewed by Weaver General Construction and approved with respect to the means, methods, techniques, & safety precautions & programs incidental thereto. Weaver General Construction also warrants that this submittal complies with contracted documents and comprises on deviations thereto:

**Contractor's Stamp:**

Date: 11/03/11  
 Reviewed by: H.C. Myers  
 ( X ) Reviewed Without Comments  
 ( ) Reviewed With Comments

**Engineer's Stamp:**

**ENGINEER'S COMMENTS:** \_\_\_\_\_



**Project: HDTWRF Project**

**Location: Fountain, CO**

**Supplier: Superior Sales**

**Date: 11/2/11**

**Additional Submittal Review Comments 02641-1.A**

- 1. Cast Iron product data for Clow mud valve is attached. Cost for Troy SS mud valve provided in submittal 02641-1 is \$1,218.00 Each, and the attached cast iron valve is \$1,035.00 each.**
- 2. Acknowledge.**
- 3. See attached product data.**
- 4. Floor recessed elevation provided in the attached data.**

Size Range	Working Pressure
4"-24"	Mud valves are recommended for use in applications with low seating or unseating pressures only.

Available in either ~~non-rising~~, rising or ~~sliding~~ stem.

**Available End Connections & Size Range**

~~Flanged End, Non-Rising Stem~~      ~~4" - 24"~~

→ Flanged End, Rising Stem      4"-24"

**Figure No.**

~~F-3075 - T~~

F-3085 - T

**Note:** Flanged ends are faced and drilled to ANSI 125 pound template except holes under where attached to flange are omitted.

**Accessories**

~~Handwheels~~

→ 2" Square Operating Nut

~~Floorstands (NRS and RS)~~

~~\*Extension Stems~~

~~"T" Handles~~

~~Stem Guides~~

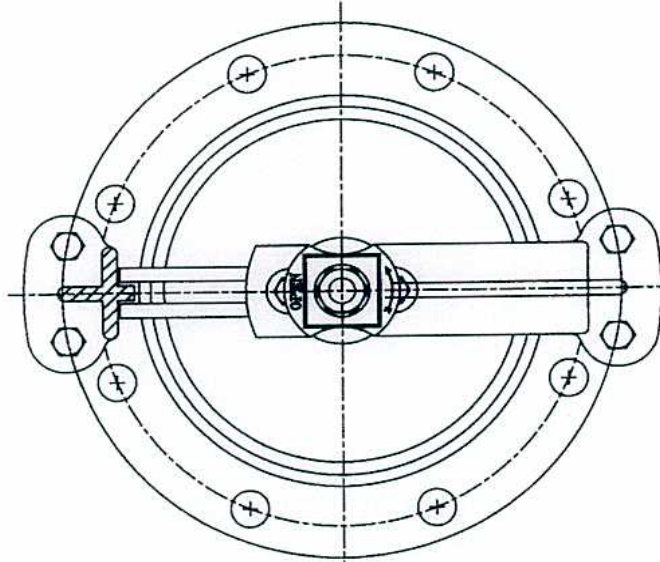
~~Floor Boxes~~

\*Note: Consult Factory Rep. or Dist. for material other than cold rolled steel.

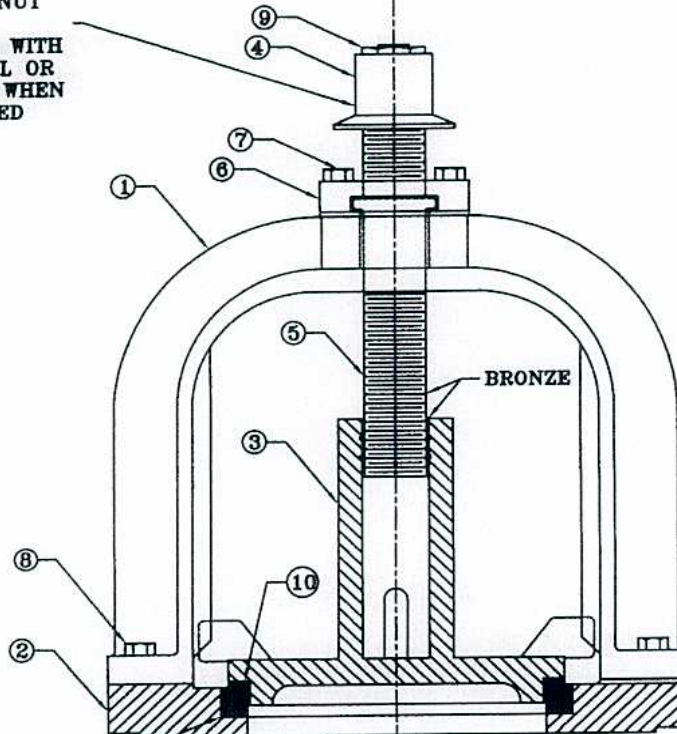
\*Note: Call Factory for special applications.

RESILIENT SEATED MUD VALVE - RISING &  
~~NON-RISING STEMS~~

**CLOW VALVE COMPANY**



[60.8]  
2.00 sq.  
WRENCH NUT  
FURNISHED WITH  
HANDWHEEL OR  
EXT. STEM WHEN  
SPECIFIED



BRONZE SEAT

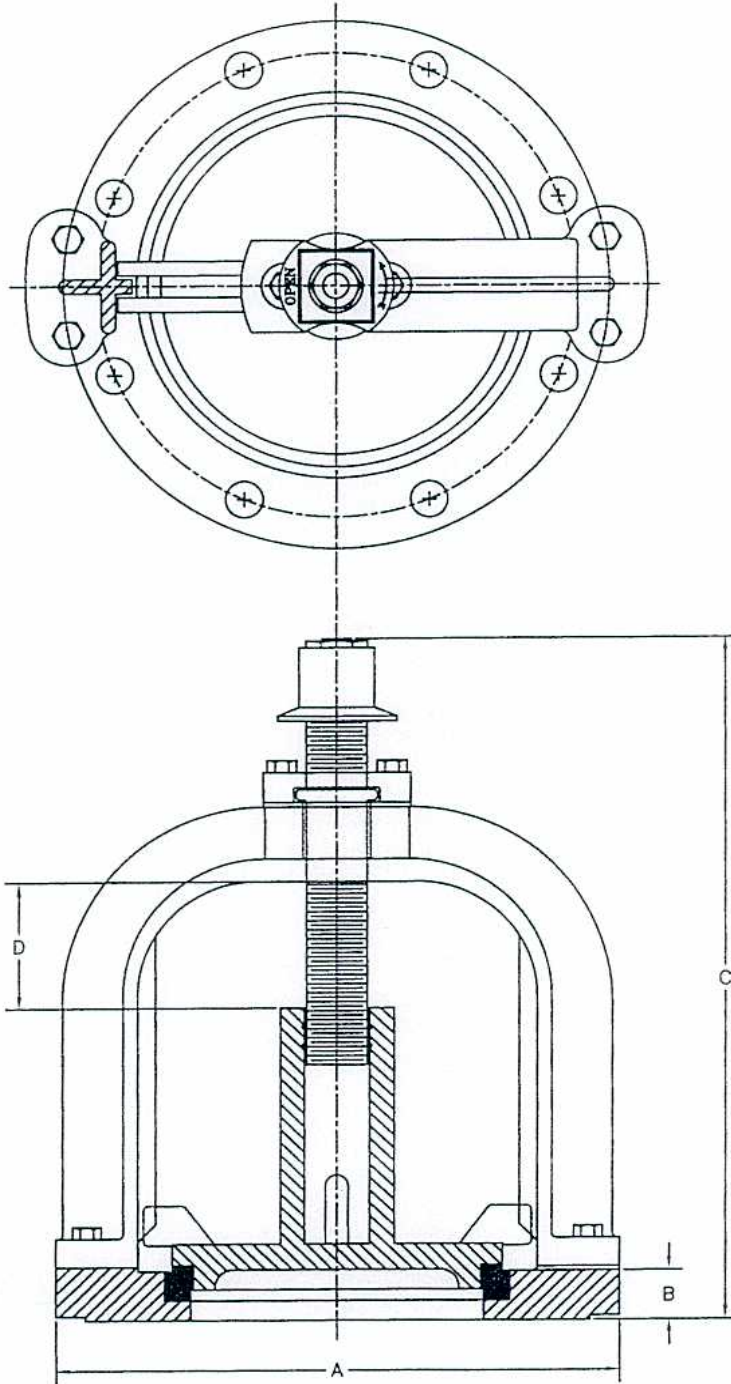
**PARTS LIST**

ITEM	DESCRIPTION	REQ'D	MATERIAL	ASTM	
1	YOKE	1	CAST IRON	A126	CL. B
2	FRAME W/BRZ RING	1	CAST IRON	A126	CL. B
3	PLUG	1	CAST IRON	A126	CL. B
4	WRENCH NUT	1	CAST IRON	A126	CL. B
5	STEM	1	BRONZE	B136	ALLOY 675
6	STEM CAP	1	CAST IRON	A126	CL. B
7	CAP SCREW	2	STEEL		ASA B16.8.2
8	CAP SCREW	4	STEEL		ASA B16.8.2
9	CAP NUT	1	STEEL	A307	GR. B PLT'D
10	PLUG SEAT	1	BUNA-N		50 DURO



RESILIENT SEATED MUD VALVE - RISING &  
NON-RISING STEMS

CLOW VALVE COMPANY



~~NON-RISING STEM MUD VALVE~~

SIZE	A	B	C	D
3"	7 $\frac{1}{2}$	$\frac{3}{4}$	11 $\frac{3}{8}$	1 $\frac{3}{4}$
4"	9	$\frac{15}{16}$	14 $\frac{1}{4}$	1 $\frac{7}{8}$
6"	11	1	16 $\frac{3}{8}$	3 $\frac{3}{8}$
8"	13 $\frac{1}{2}$	1 $\frac{1}{8}$	19 $\frac{3}{8}$	4 $\frac{5}{16}$
10"	16	1 $\frac{3}{16}$	22 $\frac{7}{8}$	5 $\frac{3}{8}$
12"	19	1 $\frac{1}{4}$	24 $\frac{1}{4}$	6 $\frac{9}{16}$
14"	21	1 $\frac{3}{8}$	27 $\frac{1}{4}$	7 $\frac{7}{8}$
16"	23 $\frac{1}{2}$	1 $\frac{7}{16}$	29 $\frac{7}{8}$	8 $\frac{7}{16}$
18"	25	1 $\frac{9}{16}$	32 $\frac{1}{4}$	8 $\frac{7}{8}$
20"	27 $\frac{1}{2}$	1 $\frac{11}{16}$	37	9 $\frac{7}{8}$
24"	32	1 $\frac{7}{8}$	41 $\frac{7}{8}$	12 $\frac{1}{4}$

Floor recess  
elev. 5396.60

RISING STEM MUD VALVE

SIZE	A	B	C	D
4"	9	$\frac{15}{16}$	10 $\frac{3}{4}$	1 $\frac{7}{8}$
6"	11	1	12 $\frac{7}{16}$	3 $\frac{3}{8}$
8"	13 $\frac{1}{2}$	1 $\frac{1}{8}$	14 $\frac{1}{4}$	4 $\frac{5}{8}$
10"	16	1 $\frac{3}{16}$	16 $\frac{1}{4}$	5 $\frac{3}{8}$
12"	19	1 $\frac{1}{4}$	18 $\frac{3}{16}$	6 $\frac{9}{16}$
14"	21	1 $\frac{3}{8}$	20 $\frac{3}{8}$	7 $\frac{7}{8}$
16"	23 $\frac{1}{2}$	1 $\frac{7}{16}$	21 $\frac{1}{4}$	8 $\frac{7}{16}$
18"	25	1 $\frac{9}{16}$	23 $\frac{1}{16}$	8 $\frac{7}{8}$

SUGGESTED SPECIFICATIONS  
CLOW MUD VALVES

**CLOW VALVE COMPANY**

The Mud valve shall be of the heavy duty flanged type designed to provide a positive seal under both seating and unseating head conditions. The Valve shall be (non rising) (rising) stem style as detailed on the schedule or the plans.

The frame, yoke and gate shall be sturdily proportioned for strength and rigidity and be of cast iron conforming to ASTM specifications A 126 Class B.

The stem, and stem nut shall be bronze. The stem shall be machined with accurately cut modified acme threads.

The seat ring shall be bronze with a tapered, accurately machined seating face. The plug seat shall be a seamless molded ring of BUNA-N tapered to accurately mate with the seat ring to form a positive seal.

Mud valves shall be ~~F-3075-T non-rising stem design or~~ F-3085-T rising stem design as furnished by Clow Valve or approved equal.



## CLOW VALVE COMPANY

### **General;**

Clow Mud valves are designed for settling basin drain lines, sump blow-offs, swimming pool drains, waterworks, sewage and filtration plants, irrigation systems, and industrial installations. They are recommended for use in lines of low seating or unseating pressures only.

Clow Mud Valves are either rising stem, ~~non-rising stem or sliding stem~~ type. Bodies are cast iron. The stem, stem nut, and seat ring are bronze. The plug seat is seamless molded buna-n tapered to mate with bronze seat ring. Bolts and nuts are rust proof steel.

Clow Mud Valves can be furnished with ~~handwheel or operating nut as required. They can also be furnished with extension stem, with plain or indicating floorstand.~~

When ordering extension stem, state length, and give distance from bottom face of flange to top of handwheel or nut, or to base of floorstand.

### **Installation;**

- A. Valve should be mounted to a standard 125# flange. Flange should be flush with the floor, level and free of debris.
- B. Check that the valve end joints are clean.
- C. Remove packing material, if any.
- D. Operate valve before installation. Check that seat is free of defects.
- E. Do not lift or sling on sealing or operating surfaces.
- F. Install valve to flange using a full face soft rubber flange gasket and proper sized bolts/studs and nuts for valve size.
- G. Tighten all bolts evenly using a star tightening pattern. Do not overtighten. Uneven tightening, jacking or overtightening may result in excessive leakage.
- H. Before filling tanks, operate valve and insure that there is no binding or warping of the seat due to uneven torque on mounting bolts or studs.
- I. Specific valve installation, in relation to container base, varies per application and should be responsibility of design engineer.

### **Operation;**

The operation of the Clow Mud Valve is straight forward, the gate is seated and unseated by rotating operating nut or handwheel in proper direction (unless sliding stem). The valve seats with the pressure in normal installations. Excess torque is not required.

### **Maintenance/Troubleshooting;**

At least once per year or whenever the tank or pool is drained, the valve should be inspected. Valve should be rinsed clean and seats inspected for damage. All bolts and nuts should be tightened as necessary. Operate valve to insure proper operation. Record all inspections with comments on work performed.

### **Lubrication Requirements;**

Periodic lubrication of the bronze valve operating stem is recommended using a \* suitable lubricant.

### **Recommended Spare Parts;**

None required.

Field disassembly is not required or recommended by factory.

\* Food grade grease similar to Mystik FG-2.