



Weaver

CONSTRUCTION MANAGEMENT

3679 S Huron Street, Suite 404 Englewood, Colorado 80110
Phone: (303) 789-4111 FAX: (303) 789-4310

SUBMITTAL TRANSMITTAL

July 12, 2012

WCM Submittal No: 02641-005

PROJECT: **Harold Thompson Regional WRF**
Birdsall Rd.
Fountain, CO 80817
Job No. 2908

ENGINEER: **GMS, Inc.**
611 No. Weber St., #300
Colorado Springs, CO 80903
719-475-2935 Roger Sams

OWNER: **Lower Fountain Metropolitan
Sewage Disposal District**
901 S. Santa Fe Ave.
Fountain, CO 80817
719-382-5303 James Heckman

CONTRACTOR: **Municipal Treatment Equipment , Inc.**
17301 W Colfax Ave, #105
Golden, CO 80401
303-231-9175 Tim Rice

SUBJECT: APCO Swing Check Valve

SPEC SECTION: 02641-9 and 02641-03 2.1 C

PREVIOUS SUBMISSION DATES:

DEVIATIONS FROM SPEC: ___ YES x NO

CONTRACTOR'S STAMP: This submittal has been reviewed by Weaver Construction Management and approved with respect to the means, methods, techniques, & safety precautions & programs incidental thereto. Weaver General Construction also warrants that this submittal complies with contracted documents and comprises on deviations thereto:

<p>Contractor's Stamp:</p> <p>Date: 7/12/12</p> <p>Reviewed by: Ronny Burst</p> <p>() Reviewed Without Comments (X) Reviewed With Comments</p>	<p>Engineer's Stamp:</p>
---	--------------------------

ENGINEER'S COMMENTS: _____



Project: Harold D. Thompson WRF

Location: Fountain, CO

Supplier/Contractor: MTE

Date: 7/12/12

Submittal No/Spec. Section: 02641-005

WCM Submittal Review Comments:

- 1. Highlighted comment on page six of this review.**

 **M**unicipal

 **T**reatment

 **E**quipment, Inc.

17301 W. Colfax Avenue, Unit 105
Golden, CO 80401
(303) 231-9175
(303) 231-0964 fax
www.municipaltreatment.com

We are providing a stainless steel seat in the body with a resilient faced disc. We feel that the stainless is an upgrade from bronze and that the resilient faced disc will ensure a tight shut-off, better than a metal-to-metal seat.



July 2, 2012

17301 W. COLFAX, #105
GOLDEN, CO

MUNICIPAL VALVE LLC

PURCHASE ORDER: TO FOLLOW

FACTORY REFERENCE: APCO WORK ORDER 802490

ENCLOSED IS: 1 SET OF APCO APPROVAL DRAWINGS.

ADDITIONAL INFORMATION:

******Note**** On approval orders only, written submittal approval must be received by your factory representative before production can be authorized.**

PLEASE DIRECT ALL INQUIRIES AND CORRESPONDENCE TO THE FOLLOWING REPRESENTATIVES.

MUNICIPAL VALVE CO
17301 W COLFAX AVE
#105
GOLDEN, CO 80401

303-231-9175



July 2, 2012

APCO APPROVAL DRAWINGS

PROJECT NAME
FOUNTAIN VALLEY

PURCHASE ORDER
TO FOLLOW

VALVE TYPE
SERIES 250 SWING CHECK VALVE

CONTRACTOR: WEAVER GENERAL CONSTRUCTION
3679 S HURON ST. STE 404
ENGLEWOOD, CO 80110


LOCAL SUPPLIER: MUNICIPAL VALVE CO
17301 W COLFAX AVE
GOLDEN, CO 80401
303-231-9175

MANUFACTURER: DeZURIK
250 RIVERSIDE AVE NORTH
SARTELL, MN 56377
(320) 259-2000

Factory Work Order 802490

WEAVER GENERAL CONSTRUCTION
 3679 S HURON ST. STE 404
 ENGLEWOOD, CO 80110

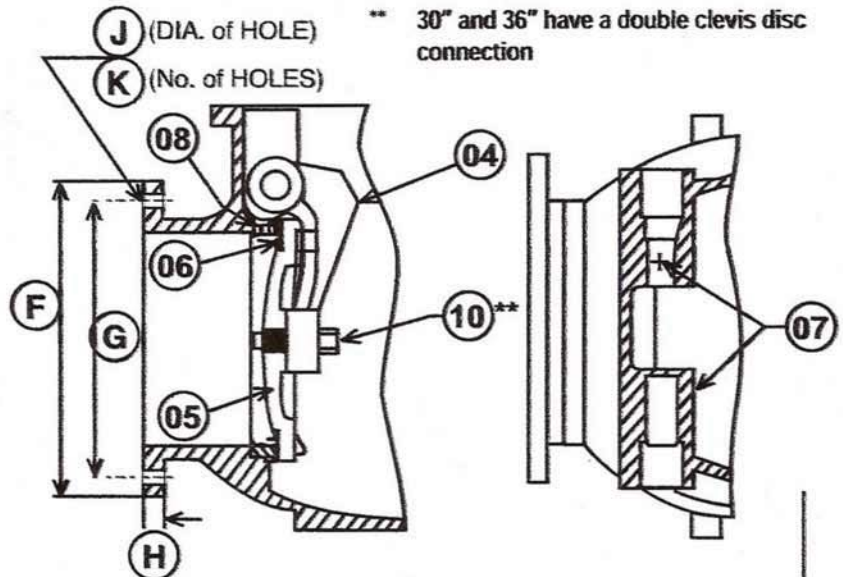
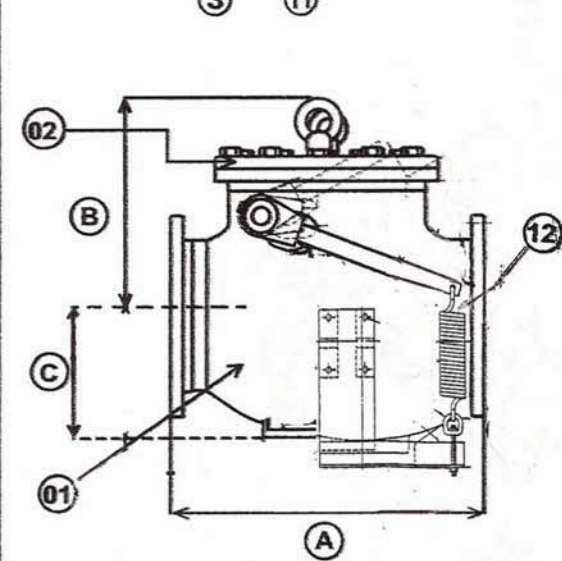
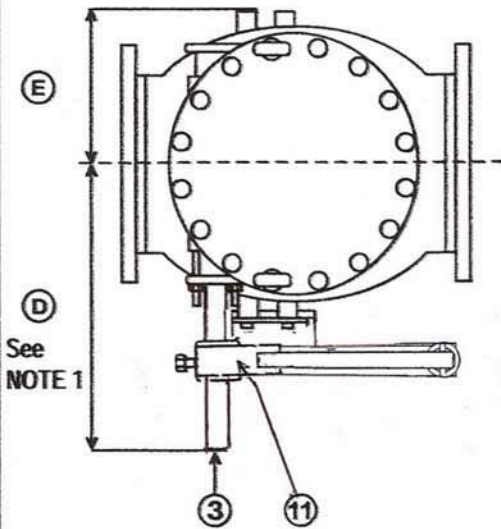
 P.O. TO FOLLOW
 FACTORY ORDER NO: 802490
 PROJECT: FOUNTAIN VALLEY

FACTORY ITEM	CUSTOMER ITEM	QTY	PART NO.	DESCRIPTION
1	1	6	250-4 LS	CVS,4,250,F1,DIF,DI-S1-S1-NBR*LS 4" SWING CHECK VALVE - ANSI CLASS 125/150 FLANGES - DUCTILE IRON BODY & COVER - DUCTILE IRON DISC - 304 STAINLESS STEEL SHAFT - 304 STAINLESS STEEL BODY SEAT - NBR DISC SEAT FEATURES - FUSION BONDED EPOXY INTERIOR & EXTERIOR - LEVER AND WEIGHT 
2	2	5	250-6 LS	CVS,6,250,F1,DIF,DI-S1-S1-NBR*LS 6" SWING CHECK VALVE - ANSI CLASS 125/150 FLANGES - DUCTILE IRON BODY & COVER - DUCTILE IRON DISC - 304 STAINLESS STEEL SHAFT - 304 STAINLESS STEEL BODY SEAT - NBR DISC SEAT FEATURES - FUSION BONDED EPOXY INTERIOR & EXTERIOR - LEVER & SPRING

SERIES 250 SWING CHECK VALVE- 125 / 150 LB. CLASS

DET.	DESCRIPTION	MATERIAL
1	BODY	DUCTILE IRON ASTM A536 GR.-45-12
2	COVER	DUCTILE IRON ASTM A536 GR.-45-12
3	PIVOT SHAFT	STAINLESS STEEL T303
4	DISC ARM	DUCTILE IRON ASTM A536 GR.-45-12
5	DISC	DUCTILE IRON ASTM A536 GR.-45-12
6	DISC SEAT	BUNA-N
7	PIVOT SHAFT BUSHING	STAINLESS STEEL T304
8	BODY SEAT RING	STAINLESS STEEL T304
9	AIR CYLINDER	OPTIONAL
10	DISC NUT	STAINLESS STEEL T304
11	SPRING LEVER ARM	DUCTILE IRON ASTM A536 GR.-45-12
12	SPRING	STEEL

NOTE: DIMENSIONS D, L, M, AND N APPLIES TO VALVES WITH AIR CUSHION / LEVER AND WEIGHT OPTION.



Valve size	3"	4"	6"	8"	10"	12"	14"	16"	18"	20"	24"	30"	36"
Model No.	250-3	250-4	250-6	250-8	250-10	250-12	250-14	250-16	250-18	250-20	250-24	250-30	250-36
A Face to Face	12	13	17 1/2	18	23	28	33	36	40	40	48	56	63
B Center to Top	10	10 3/4	11 3/4	13 3/4	15	19	22 1/2	24 1/2	26 1/2	28 3/4	32 1/2	44 1/8	50 1/2
C Center to Body Base	4 1/2	5	5 3/4	7 1/4	9 3/8	11	13 1/2	14 1/4	17 3/8	17 5/8	20 1/8	29 3/4	33 1/2
D Center to Side CWT End	11	11 3/4	13 1/2	17	16 1/4	18 1/4	26	29 1/2	31	32 3/8	34	39	42
E Center to Body Side	4	5	6 1/2	7 1/2	9	11	14	15	18 5/8	18 5/8	21	24	27
F Flange Diameter	7 1/2	9	11	13 1/2	16	19	21	23 1/2	25	27 1/2	32	38 3/4	46
G Bolt Circle Diameter	6	7 1/2	9 1/2	11 3/4	14 1/4	17	18 3/4	21 1/4	22 3/4	25	29 1/2	36	42 3/4
H Flange Thickness	3/4	15/16	1	1 1/8	1 3/16	1 1/4	1 3/8	1 7/16	1 9/16	1 11/16	1 7/8	2 1/8	2 3/8
J Bolt Holes Diameter	3/4	3/4	7/8	7/8	1	1	1 1/8	1 1/8	1 1/4	1 1/4	1 3/8	1 3/8	1 5/8
K Number of Bolt Holes	4	8	8	8	12	12	12	16	16	20	20	28	32
L Center to Top CWT Swing	7 1/2	10 1/4	12 1/2	16	16 3/4	20 1/4	29	32	36	41	38	53 1/8	57 1/2
M Center to Cylinder Base	12	11 1/2	10 1/2	14 1/4	13 1/2	13 1/4	13 1/4	14 1/2	13	14 1/2	11 3/4	17 1/4	13
N Flange Face to CWT Swing	4 1/2	4 3/4	2 1/4	1 3/4	0	4	3	2	7	6	0	14 1/8	14 5/8
Approx. Shipping Weights	110	145	205	330	500	800	1260	1600	2100	2500	3700	6000	9100

CERTIFIED BY: _____
DATE: _____

DATE
02-16-06

APCO *Williams*
VALVE AND PRIMEX CORPORATION

DRWG. NO.
S-250LS



RECOMMENDED LONG AND SHORT TERM STORAGE PROCEDURES

LONG-TERM STORAGE

1. All resilient seated valves shall be stored in the open (unseated) position.
2. All valves with adjustable packing glands should have the packing gland loosened prior to storage.
3. Valves shall be separately packaged in a sealed polyethylene plastic enclosure with a minimum of one package of desiccant inside, dependent upon valve size.
4. Prepared valves shall be warehoused in a clean, dry, indoor facility on concrete or raised racks, with temperature ranging from 35°F to 95°F (2°C to 35°C).
5. Valves shall not be near electric motors or other equipment which may emit Ozone which can cause deterioration of elastomers used for valve and actuator components.
6. The valves shall be inspected periodically to replace the desiccant if required, and to repair any damage to the polyethylene plastic enclosures.
7. Valves with cylinder operators and control valves which are stored for extended periods may be subject to cylinder blow-by caused by permanent distortion of any of the seals. Valves should be operated prior to installation and damaged seals replaced.
8. Valves with electric motor operators shall be stored in accordance with the individual motor manufacturer's recommended long-term storage procedures in addition to Paragraphs 1, 2 and 3 above.
9. All electrical components, if applicable, should be inspected and all electrical contacts cleaned before operation.
10. Valves shall be enclosed in fully sheathed wooden crates or boxes.

SHORT-TERM STORAGE

1. Valve should be protected from the weather, avoid exposure to excessive moisture or dirt. Store at temperatures ranging from 35°F to 95°F (2°C to 35°C).