



WEAVER CONSTRUCTION MANAGEMENT, INC.
 3679 S. Huron St., Suite 404
 Englewood, CO 80110
 Phone: (303) 789-4111 FAX: (303) 789-4310

SUBMITTAL TRANSMITTAL

November 2, 2011
WCM Submittal No: 02709-002

PROJECT: Harold Thompson Regional WRF
 Birdsall Rd.
 Fountain, CO 80817
 Job No. 2908

ENGINEER: **GMS, Inc.**
 611 No. Weber St., #300
 Colorado Springs, CO 80903
 719-475-2935 Roger Sams

OWNER: Lower Fountain Metropolitan
Sewage Disposal District
 901 S. Santa Fe Ave.
 Fountain, CO 80817
 719-382-5303 James Heckman

CONTRACTOR: **Oldcastle Precast, Inc.**
 Bruce Buschbach
Bruce.Buschbach@oldcastleprecast.com

SUBJECT: Submittal for manhole steps at the wetwells of the P&D bldg. – Product not specified in documents

SPEC SECTION: 02709 Gravity Sewer and Appurtenances

PREVIOUS SUBMISSION DATES:

DEVIATIONS FROM SPEC: ___ YES X NO

CONTRACTOR'S STAMP: This submittal has been reviewed by Weaver General Construction and approved with respect to the means, methods, techniques, & safety precautions & programs incidental thereto. Weaver General Construction also warrants that this submittal complies with contracted documents and comprises on deviations thereto:

<p>Contractor's Stamp:</p> <p>Date: 11/02/11 Reviewed by: H.C. Myers <input checked="" type="checkbox"/> Reviewed Without Comments <input type="checkbox"/> Reviewed With Comments</p>	<p>Engineer's Stamp:</p>
--	---------------------------------

ENGINEER'S COMMENTS: _____



M. A. INDUSTRIES, INC.

Quality Products Through Creative Research

August 2, 2010

Dear Mr. Buschbach,

As of September 2004, M.A. Industries, Inc. promotes our double face PS-2-PF manhole steps. These steps provide a tread on both the top and bottom of the step to prevent mis-installation.

Our PS-2-PFDF steps have a center to center leg distance of 13.5", an overall width of 14.5", an overall length of 9 3/16" and an overall projection of 5 7/8". Once each step is fully imbedded 3 5/16" the remaining projection cannot exceed 6" per ASTM C-478.

I have attached copies of our updated cut sheet and ASTM certification for your reference. Please feel free to contact me if you have any questions or if I can be of further assistance.

Sincerely,

Christina Barnes

Christina Barnes
Customer Service Manager
M.A. Industries, Inc.
(800) 241-8250, ext. 308
christinab@maind.com



M. A. INDUSTRIES, INC.

Quality Products Through Creative Research

January 1, 2010

Manhole Step Certification

M.A. Industries, Inc. certifies that any quantities of the M.A. Industries, Inc. steel reinforced copolymer polypropylene manhole steps meet the following specifications:

- 1) ASTM C-478-02, section 13 Manhole Steps and Ladders (ASTM C 497-98 is Method of Test)
- 2) AASHTO No. M-199-811 portion for Manhole Steps (when properly installed)
- 3) ASTM D-4101-02 pp0344b33534z02 Copolymer Polypropylene
- 4) ASTM A-615 Grade 60 ½" steel reinforced rod. This letter further certifies that all steel used in all M.A. Industries' manhole steps is 100% made in the United States of America
- 5) OSHA Instruction STD 1-1.9 of December 29, 1978 (manhole steps when properly installed)
- 6) OSHA 29 CFR Part 1910.27 of July 1996 (manhole steps when properly installed)
- 7) Federal Specifications RR-F-621E paragraphs 3.8 and 6.2e for non-sparking steps.
- 8) New York D.O.T. Standards 725-02.01.

All of M.A. Industries' Manhole Steps meet the American Recovery & Reinvestment Act of 2009 provision 1605. (Made in the USA)

If you have any questions, feel free to contact me at 1-800-241-8250, ext. 308.

Sincerely,

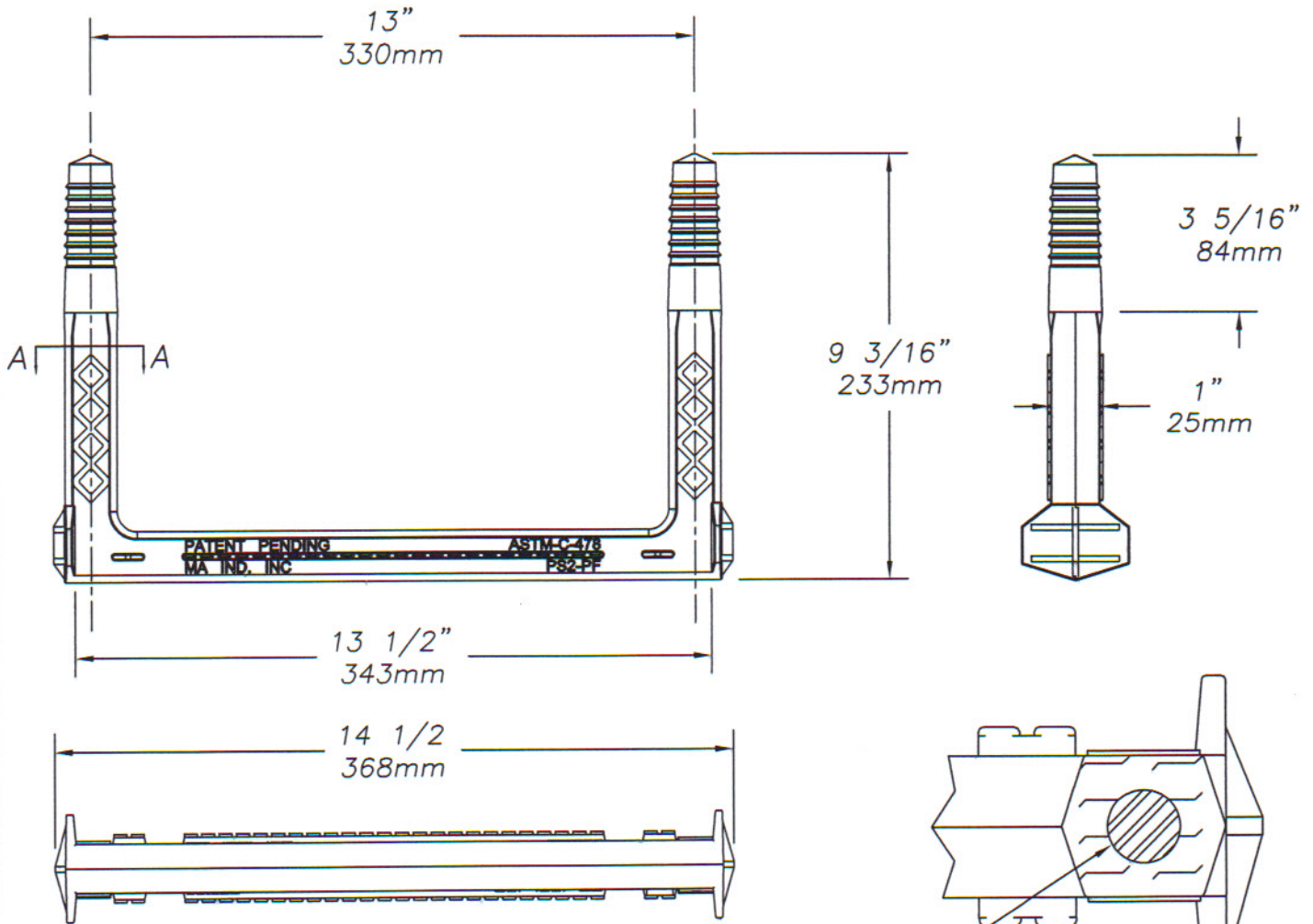
Christina Barnes

Christina Barnes
Customer Service Manager

PS2-PF-DF

004-510-DF

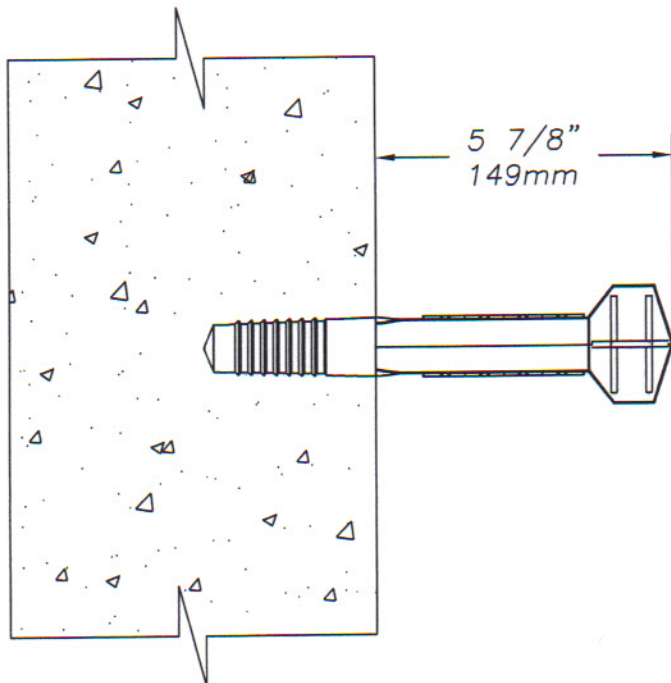
Manhole Step



Copolymer Polypropylene Plastic

13mm
1/2" **GRADE 60 STEEL REINFORCEMENT**

SECTION-A



**MEETS: ASTM C-478
ASTM D-4101
ASTM A-615
AASHTO M-199**



M . A . I N D U S T R I E S , I N C .