



WEAVER GENERAL CONSTRUCTION COMPANY
 3679 S. Huron St., Suite 404
 Englewood, CO 80110
 Phone: (303) 789-4111 FAX: (303) 789-4310

SUBMITTAL TRANSMITTAL

March 1, 2011

WGC Submittal No: 03200-007

PROJECT: **Harold Thompson Regional WRF**
 Birdsall Rd.
 Fountain, CO 80817
 Job No. 2908

ENGINEER: **GMS, Inc.**
 611 No. Weber St., #300
 Colorado Springs, CO 80903
 719-475-2935 Roger Sams

OWNER: **Lower Fountain Metropolitan
 Sewage Disposal District**
 901 S. Santa Fe Ave.
 Fountain, CO 80817
 719-382-5303 James Heckman

CONTRACTOR: **Dalco Industries Inc.**
 3730 Salem Street
 Denver, CO 80239
 303-371-3950 Manuel Morales

SUBJECT: Piers at Headworks Building (P4)

SPEC SECTION: 03200 - Concrete Reinforcement

PREVIOUS SUBMISSION DATES: None

DEVIATIONS FROM SPEC: ___ YES X NO

CONTRACTOR'S STAMP: This submittal has been reviewed by Weaver General Construction and approved with respect to the means, methods, techniques, & safety precautions & programs incidental thereto. Weaver General Construction also warrants that this submittal complies with contracted documents and comprises on deviations thereto:

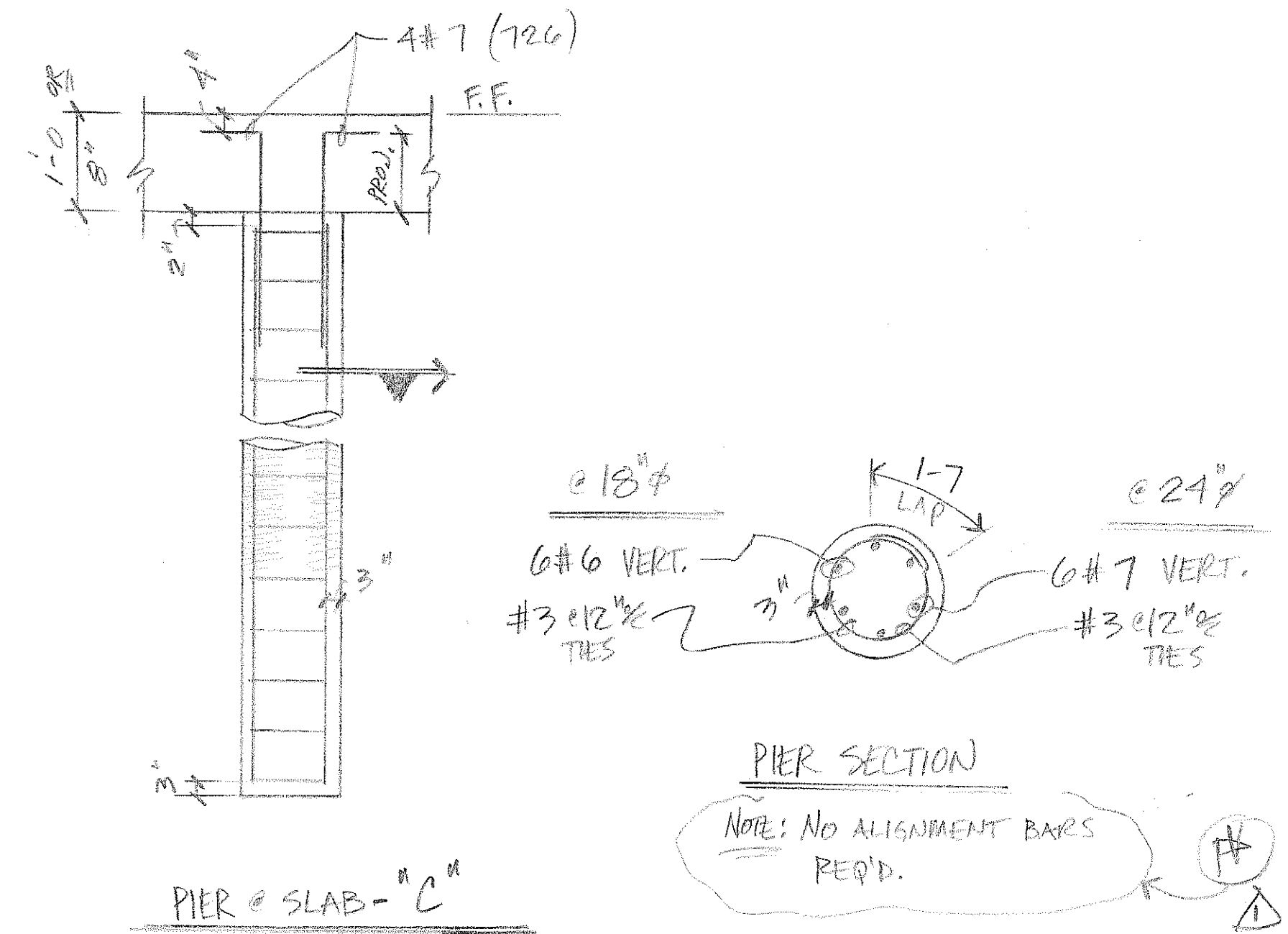
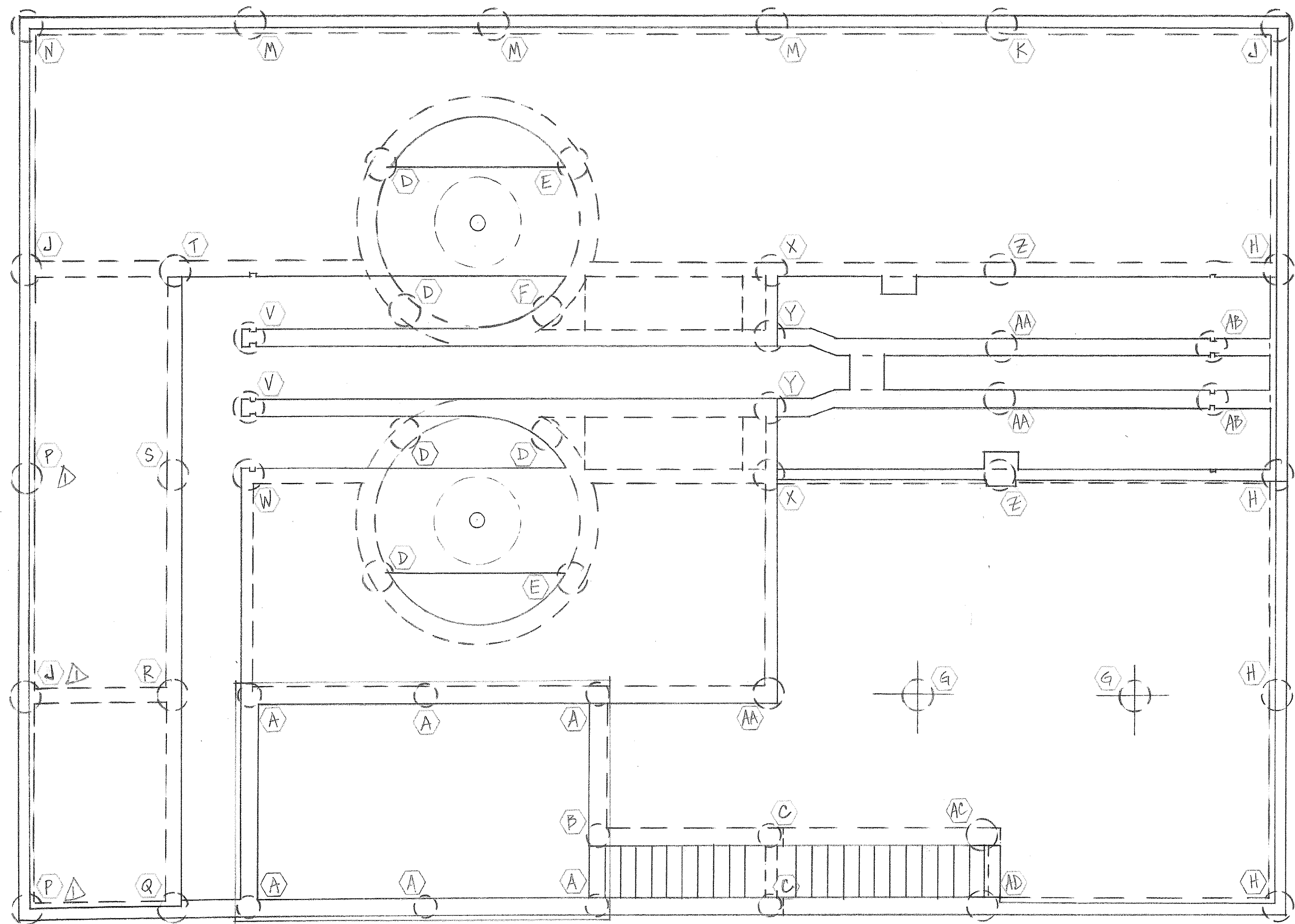
Contractor's Stamp:

Engineer's Stamp:

Date: 3/1/11
 Reviewed by: H.C. Myers
 (X) Reviewed Without Comments
 () Reviewed With Comments

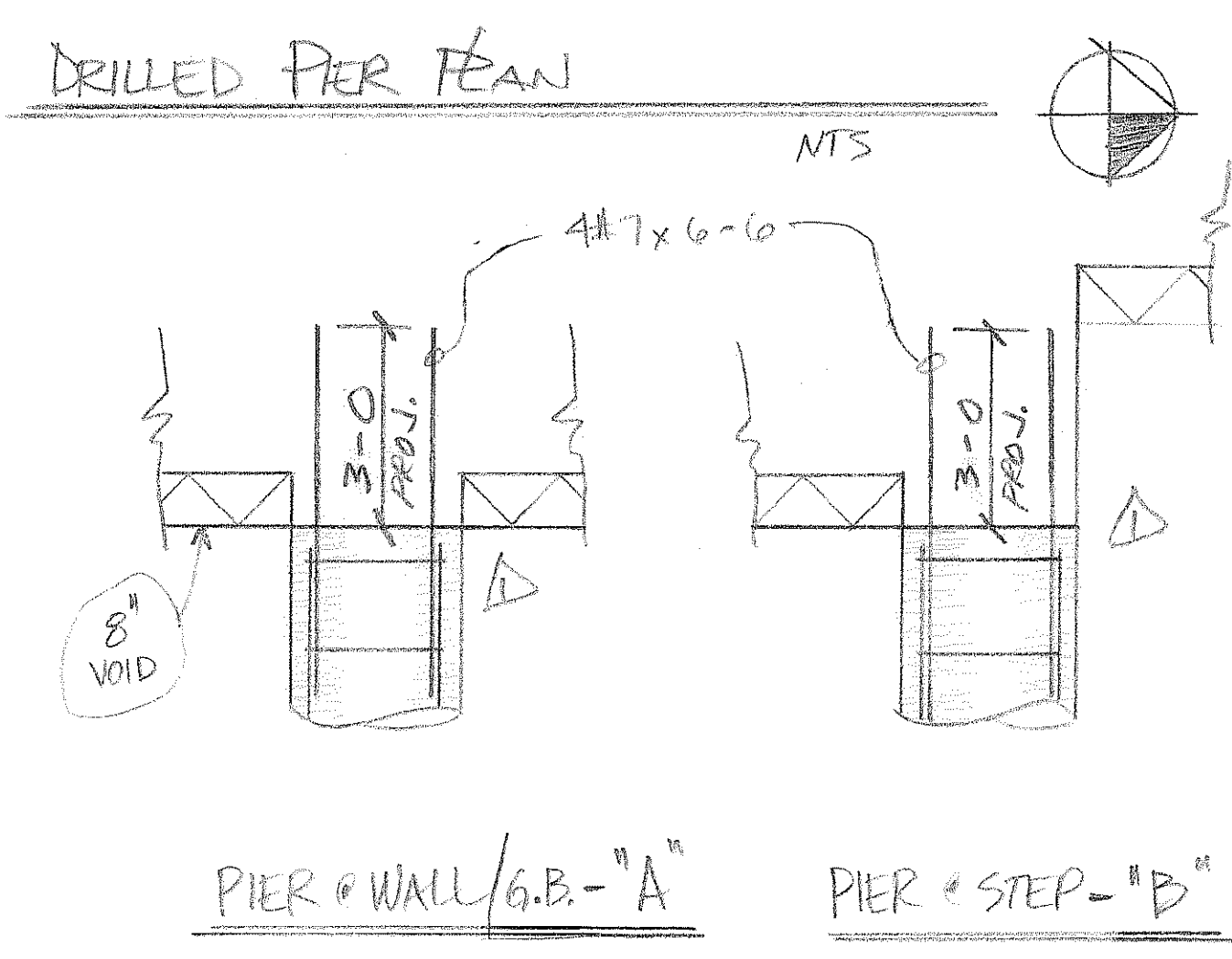
**ENGINEER'S
 COMMENTS:** _____

QTY	SIZE	TYPE	FT. IN.	MARK	SKETCH	A	B	C	D	E	F/R	G	H	K	J	U	
3	T3		324	○						3-2						1-7	
3	T3		325	○						4-9						1-7	
7	T7		726	┌						1-2	6-6						1-6



DRILLED PIER SCHED.

MK.	QTY.	DIA.	VERT'S.	TIES #12%	DWLS.	REMARKS.	MK.	QTY.	DIA.	VERT'S.	TIES #12%	DWLS.	REMARKS.
A	6	18"	6#6x33-5	35(324)	4(726) PROJ.	SEL. "C"	V	2	24"	6#7x46-7	48(325)	4(726) PROJ.	
B	ONE		6#6x34-5	36(324)	4(726) do.	do.	W	ONE		6#7x45-7	47(325)	4(726)	
C	2	18"	6#6x33-5	35(324)	4#7x6-6	"B"	X	2		6#7x42-5	44(325)	4(726)	
D	5	24"	6#7x36-1	37(325)	4(726) PROJ.	"C"	Y	2		6#7x42-7	44(325)	4(726)	
E	2		6#7x37-1	38(325)	4(726)		Z	2		6#7x43-11	45(325)	4(726)	
F	ONE		6#7x40-1	41(325)	4(726) do.	do.	AA	3		6#7x45-11	47(325)	4(726)	
G	2		6#7x48-7	50(325)	4(726) PROJ.	Δ "C"	AB	2		6#7x46-11	48(325)	4(726)	
H	4		6#7x42-11	44(325)	4#7x6-6	SEC. "A"	AC	ONE		6#7x41-5	43(325)	4(726)	
J	3		6#7x47-3	48(325)	4#7x6-6		AD	ONE		6#7x37-5	39(325)	4(726) do.	
K	ONE		6#7x45-3	46(325)	4#7x6-6								
M	3		6#7x46-3	47(325)	4#7x6-6								
N	ONE		6#7x48-3	49(325)	4#7x6-6								
P	2		6#7x48-3 Δ	49(325)	4#7x6-6								
Q	ONE		6#7x40-11	42(325)	4#7x6-6								
R	ONE		6#7x39-11	41(325)	4#7x6-6								
S	ONE		6#7x43-7	45(325)	4#7x6-6								
T	ONE		6#7x44-7	46(325)	4#7x6-6	do.							



LEGEND

- O.F. - OUTSIDE FACE
- I.F. - INSIDE FACE
- E.F. - EACH FACE
- HORIZ. - HORIZONTAL
- VERT. - VERTICAL
- DWLS. - DOWELS
- FTG. - FOOTING
- ELEV. - ELEVATION
- E.W. - EACH WAY
- T.O.F. - TOP OF FOOTING
- B.O.F. - BOTTOM OF FOOTING
- T.O.W. - TOP OF WALL
- B.O.W. - BOTTOM OF WALL
- GRD. BM. - GRADE BEAM
- MK. - MARK
- MAS. - MASONRY
- DIAG. - DIAGONAL
- COL. - COLUMN
- PROJ. - PROJECTION
- T & B - TOP & BOTTOM
- N.F. - NEAR FACE
- F.F. - FAR FACE
- % - ON CENTER
- @ - AT EACH

NO. 2/23 DATE 2/15/11 REVISED PER NEW DWGS. ISSUED FOR

DALCO INDUSTRIES, INC.
An Employee Owned Company
AREA CODE 303 371-3950 3730 SALEM ST. DENVER, COLO. 80228

JOB HAROLD D. THOMPSON REG. WATER RECLAIM.
LOCATION FOUNTAIN, Co.
DESCRIPTION PIERS & HEADWORKS
CONTRACTOR WEAVER CONST.
ARCHITECT GMS, Inc.

DRAWN: D. TARIN CHECKED: DATE: 12/7/10 REVISIONS: JOB NO. 10082 DRAWING NO. P4