



**WEAVER CONSTRUCTION MANAGEMENT COMPANY**  
 3679 S. Huron St., Suite 404  
 Englewood, CO 80110  
 Phone: (303) 789-4111 FAX: (303) 789-4310

**SUBMITTAL TRANSMITTAL**

September 13, 2011  
WGC Submittal No: 03200-011.A

**PROJECT:** Harold Thompson Regional WRF  
 Birdsall Rd.  
 Fountain, CO 80817  
 Job No. 2908

**ENGINEER:** GMS, Inc.  
 611 No. Weber St., #300  
 Colorado Springs, CO 80903  
 719-475-2935 Roger Sams

**OWNER:** Lower Fountain Metropolitan  
 Sewage Disposal District  
 901 S. Santa Fe Ave.  
 Fountain, CO 80817  
 719-382-5303 James Heckman

**CONTRACTOR:** Dalco Industries Inc.  
 3730 Salem Street  
 Denver, CO 80239  
 303-371-3950 David Tarin

**SUBJECT:** Resubmittal - Rebar for Equipment and Maintenance Building - PEM-1

**SPEC SECTION:** 03200 - Concrete Reinforcement

**PREVIOUS SUBMISSION DATES:** 8/26/11

**DEVIATIONS FROM SPEC:** \_\_\_ YES X NO

**CONTRACTOR'S STAMP:** This submittal has been reviewed by WCM and approved with respect to the means, methods, techniques, & safety precautions & programs incidental thereto. Weaver General Construction also warrants that this submittal complies with contracted documents and comprises on deviations thereto:

**Contractor's Stamp:**

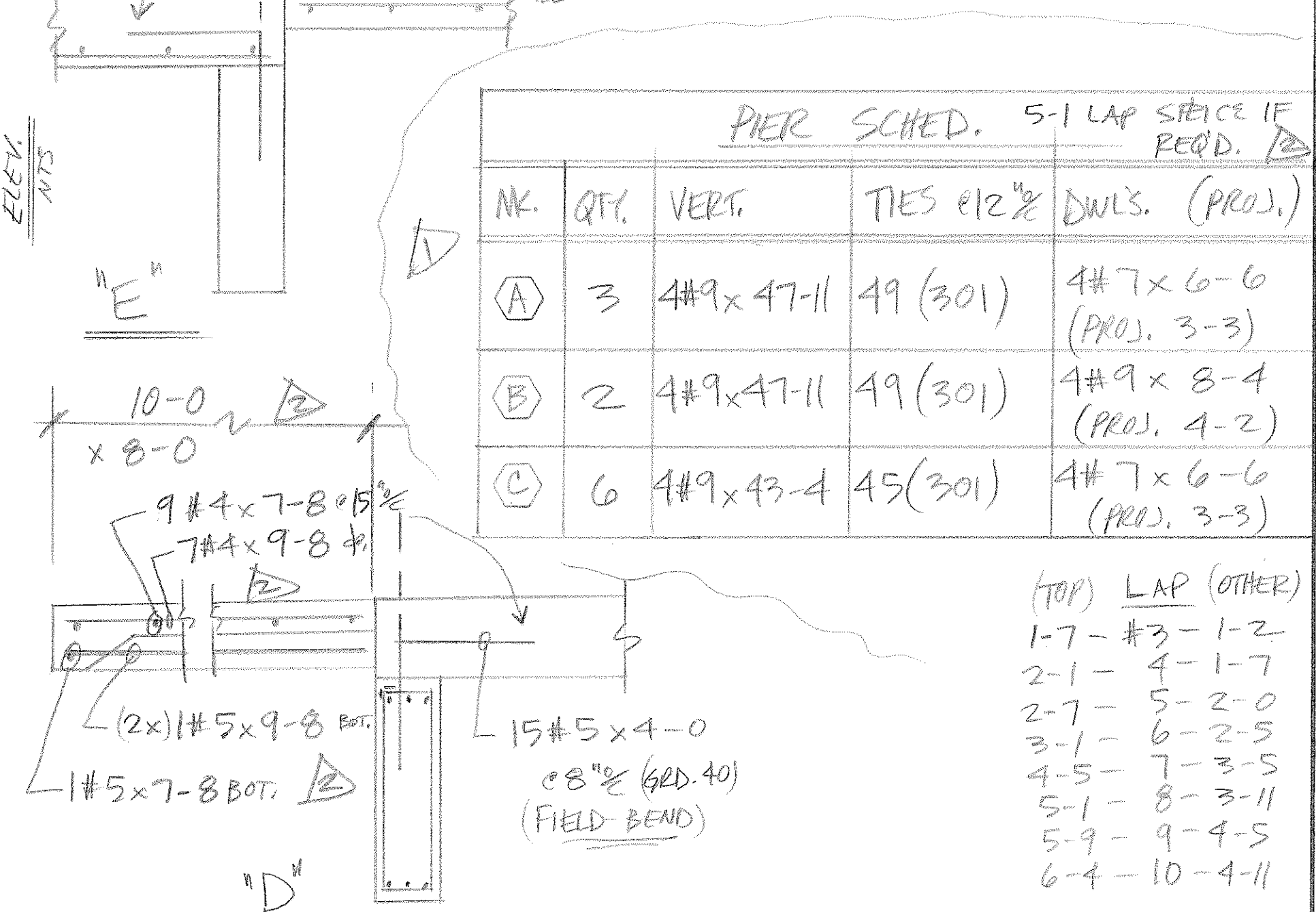
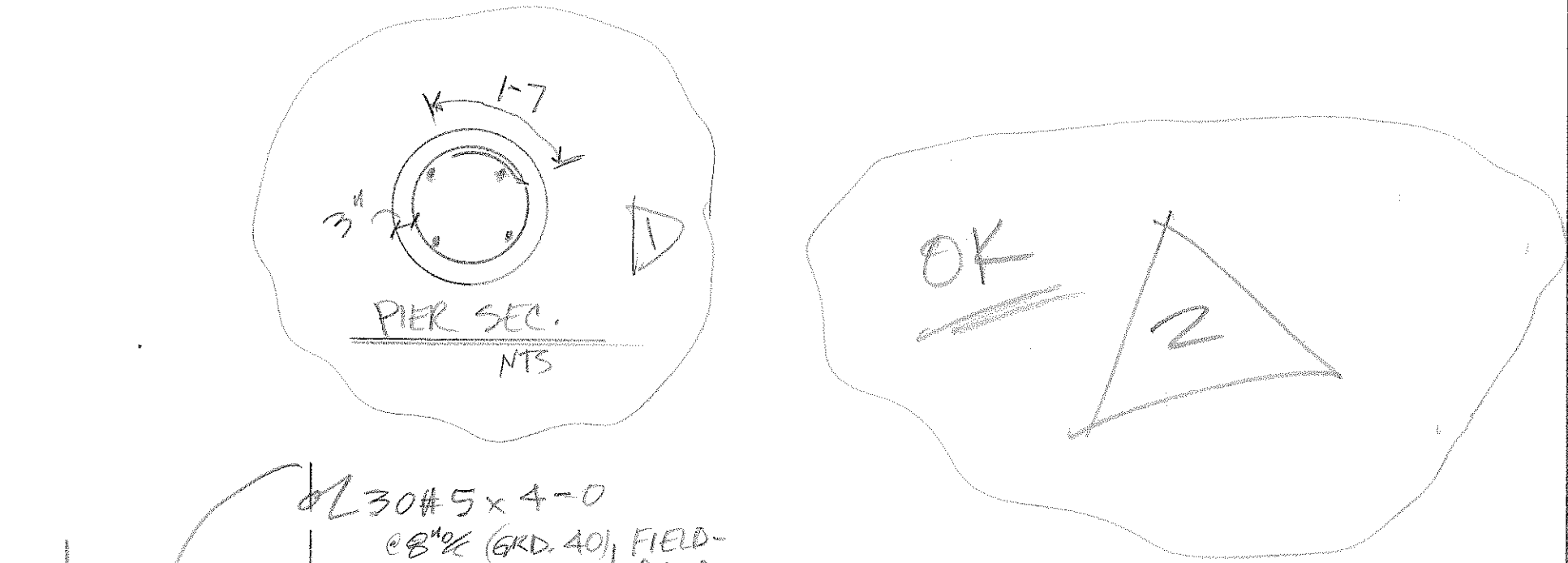
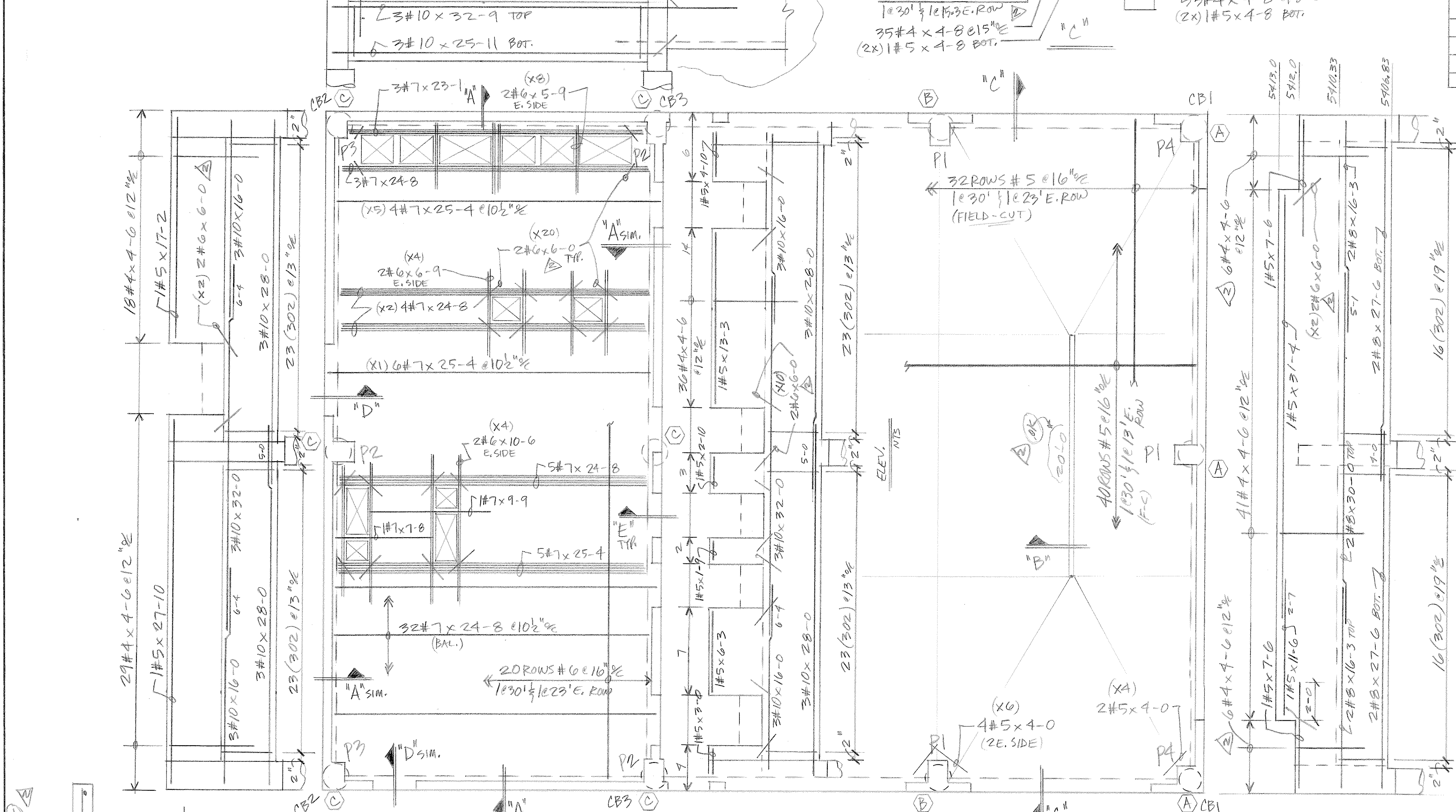
Date: 9/13/11  
 Reviewed by: H.C. Myers  
 ( X ) Reviewed Without Comments  
 ( ) Reviewed With Comments

**Engineer's Stamp:**

**ENGINEER'S COMMENTS:** \_\_\_\_\_

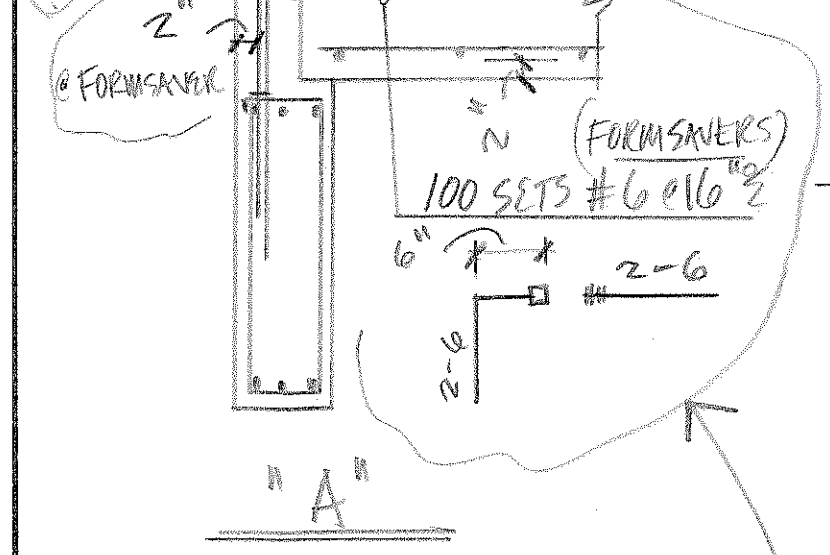
PIER SCHED.			
NK.	QTY.	VERT.	TIES $\frac{3}{8}$ " TOP BAL. @ 6"
P1	3	6#9x5-4	11(409)
P2	3	6#9x5-11	12(409)
P3	2	6#7x5-0	10(404)
P4	2	6#9x5-4	11(405)

QTY	SIZE	TYPE	LENGTH FT. - IN.	MARK	SKETCH	A	B	C	D	E	F/R	G	H	K	J	O
3	T3		301	○				4-9								1-7
3	T2		302	□		+	0-9	3-1	+	+						+
4	T2		403	□		+	1-3	2-1	+	+						+
4	T2		404	□		+	1-5	1-7	+	+						+
4	T2		405	□		+	1-9	1-9	+	+						+
8	17		306	┌			4-6	4-6								
10	17		1007	┌			5-6	5-6								
5	17		508	┌			2-7	2-7								
5	S4		509	┌		2-0	0-0	1-3	0-6							2-0
5	S4		510	┌		2-0	0-6	2-0								
8	20		811	┌		4-0	0-7	4-0								
8	3		812	┌		4-0	+	4-0								0-7 0-7



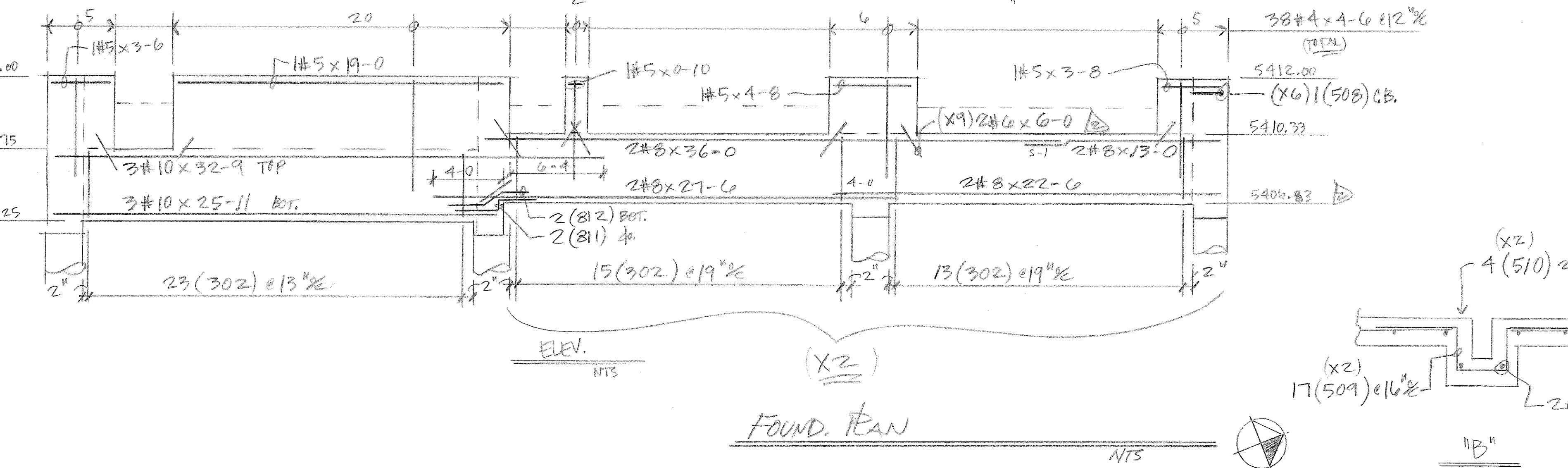
PIER SCHED. 5-1 LAP SPICE IF REQ'D.				
NK.	QTY.	VERT.	TIES @ 12"	DWLS. (PROJ.)
A	3	4#9x47-11	49(301)	4#7x6-6 (PROJ. 3-3)
B	2	4#9x47-11	49(301)	4#9x8-4 (PROJ. 4-2)
C	6	4#9x43-4	45(301)	4#7x6-6 (PROJ. 3-3)

(TOP)	LAP	(OTHER)
1-7	-	#3-1-2
2-1	-	4-1-7
2-7	-	5-2-0
3-1	-	6-2-5
4-5	-	7-3-5
5-1	-	8-3-11
5-9	-	9-4-5
6-4	-	10-4-11



CORNER BAR SCHED.		
NK.	QTY.	BAR
CB1	2	6(306) 3TB
CB2	2	8(1007) 4TB
CB3	2	12(1007) 6TB

UNIT PRICE



LEGEND

- O.F. - OUTSIDE FACE
- I.F. - INSIDE FACE
- E.F. - EACH FACE
- HORIZ. - HORIZONTAL
- VERT. - VERTICAL
- DWLS. - DOWELS
- FTG. - FOOTING
- ELEV. - ELEVATION
- E.W. - EACH WAY
- T.O.F. - TOP OF FOOTING
- B.O.F. - BOTTOM OF FOOTING
- T.O.W. - TOP OF WALL
- B.O.W. - BOTTOM OF WALL
- GRD. BM. - GRADE BEAM
- MK. - MARK
- MAS. - MASONRY
- DIAG. - DIAGONAL
- COL. - COLUMN
- PROJ. - PROJECTION
- T & B - TOP & BOTTOM
- N.F. - NEAR FACE
- F.F. - FAR FACE
- % - ON CENTER
- @ - AT EACH

9/13 APPROV. FOR CONST. & REVISE / RESUBMIT

9/6 PIERS APPROV. FOR CONST.

NO.	DATE	ISSUED FOR

**DALCO INDUSTRIES, INC.**  
An Employee Owned Company  
AREA CODE 303 371-3950 3730 SALEM ST. DENVER, COLO. 80239

JOB **HDTWTP EQUIP. & MAINT. BLDGS.**

LOCATION **FOUNTAIN, CO.**

DESCRIPTION **FOUND. PLAN & EQUIP. & MAINT. BLDGS.**

CONTRACTOR **WEAVER CONST.**

ARCHITECT **GIMS**

DRAWN: **D. TAPIN** CHECKED: **GIMS** DATE: **8/25/11** REVISIONS: **10082** JOB NO. **REM-1** DRAWING NO. **1-6**