



WEAVER CONSTRUCTION MANAGEMENT COMPANY
 3679 S. Huron St., Suite 404
 Englewood, CO 80110
 Phone: (303) 789-4111 FAX: (303) 789-4310

SUBMITTAL TRANSMITTAL

October 7, 2011

WCM Submittal No: 03200-012

PROJECT: **Harold Thompson Regional WRF**
 Birdsall Rd.
 Fountain, CO 80817
 Job No. 2908

ENGINEER: **GMS, Inc.**
 611 No. Weber St., #300
 Colorado Springs, CO 80903
 719-475-2935 Roger Sams

OWNER: **Lower Fountain Metropolitan
 Sewage Disposal District**
 901 S. Santa Fe Ave.
 Fountain, CO 80817
 719-382-5303 James Heckman

CONTRACTOR: **Dalco Industries Inc.**
 3730 Salem Street
 Denver, CO 80239
 303-371-3950 David Tarin

SUBJECT: Submittal of Pier Plan @ Pumping Disinfection (PD-1)

SPEC SECTION: 03200 - Concrete Reinforcement

PREVIOUS SUBMISSION DATES:

DEVIATIONS FROM SPEC: ___ YES X NO

CONTRACTOR'S STAMP: This submittal has been reviewed by WCM and approved with respect to the means, methods, techniques, & safety precautions & programs incidental thereto. Weaver General Construction also warrants that this submittal complies with contracted documents and comprises on deviations thereto:

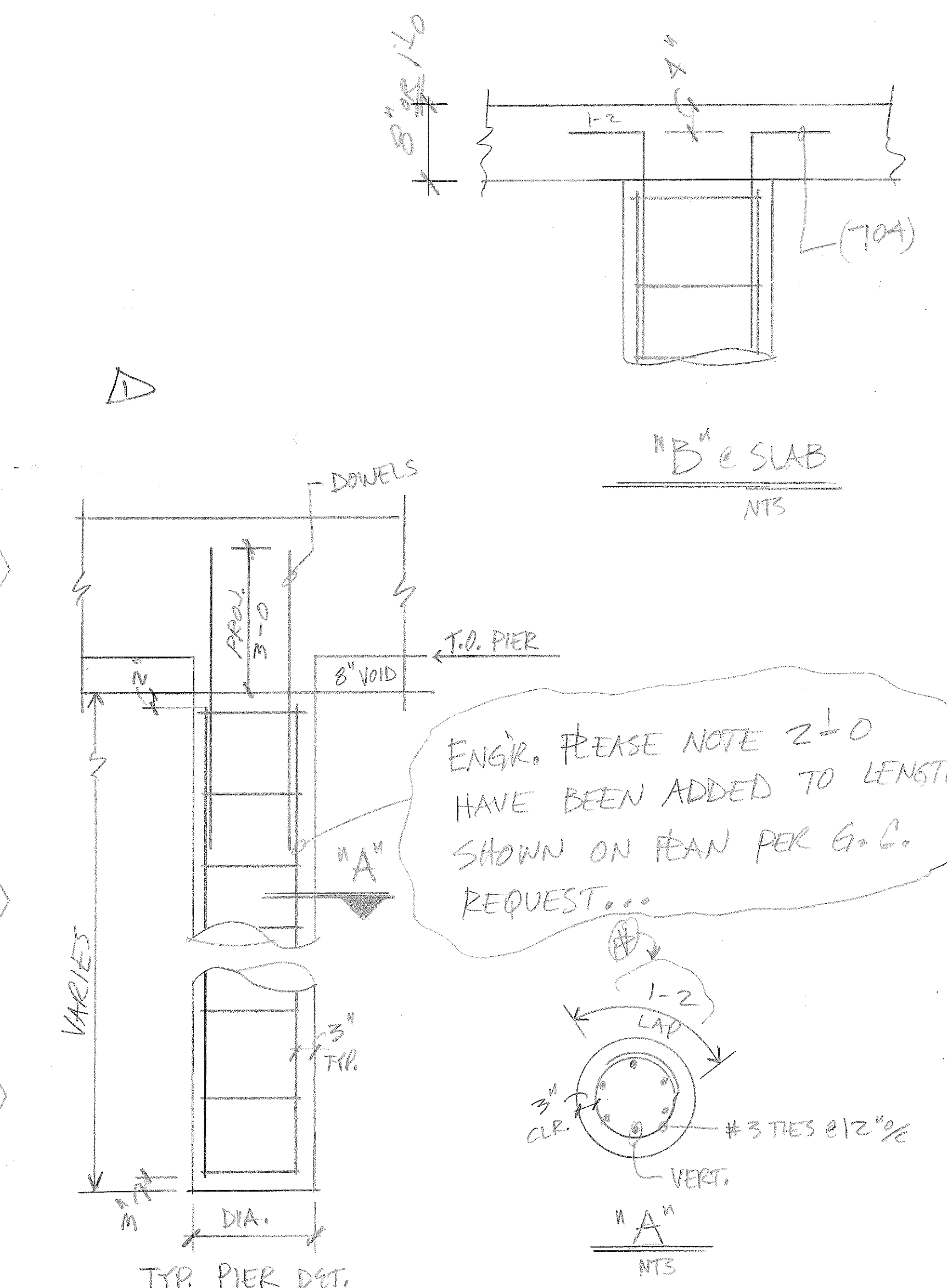
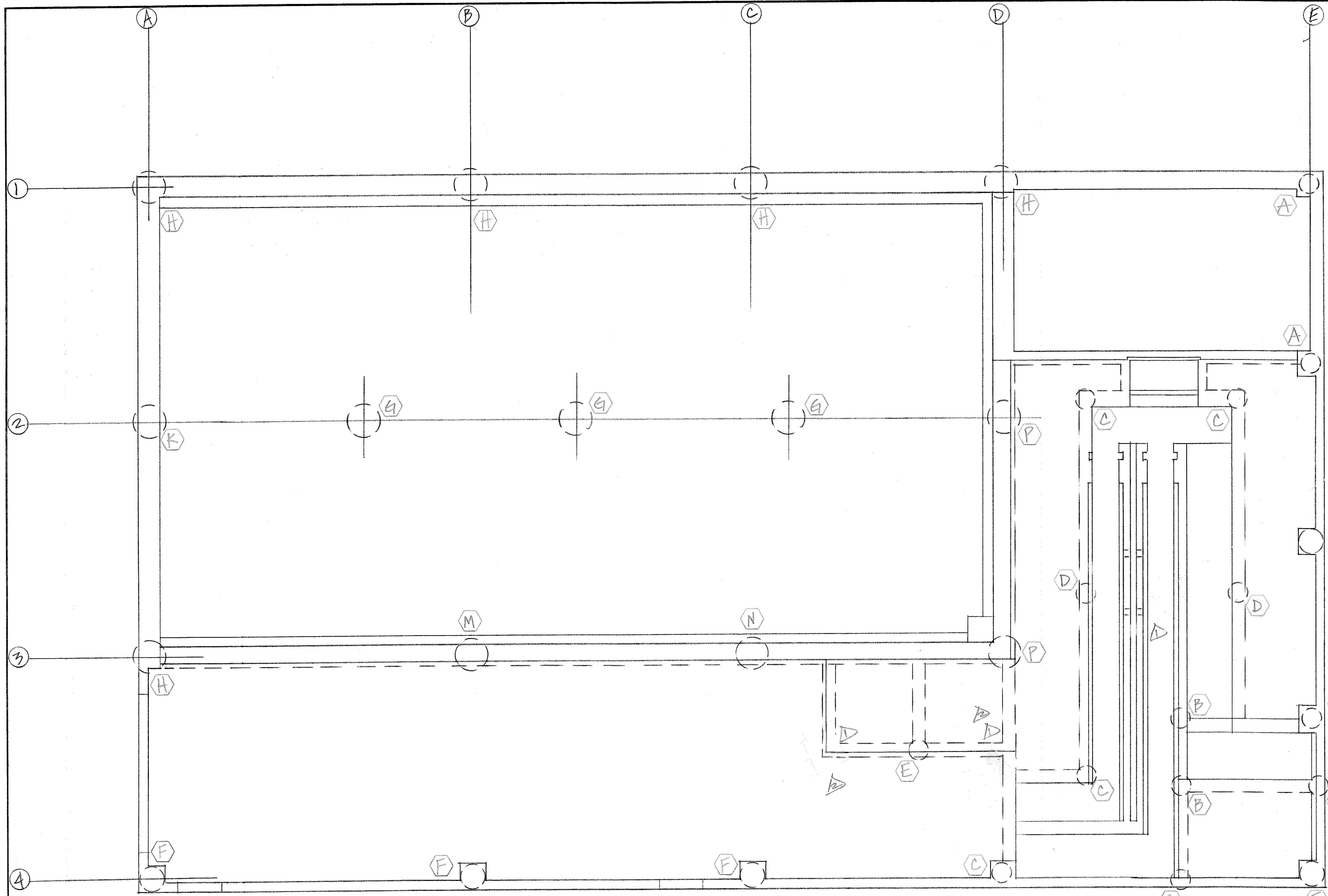
Contractor's Stamp:

Engineer's Stamp:

Date: 10/7/11
 Reviewed by: H.C. Myers
 (X) Reviewed Without Comments
 () Reviewed With Comments

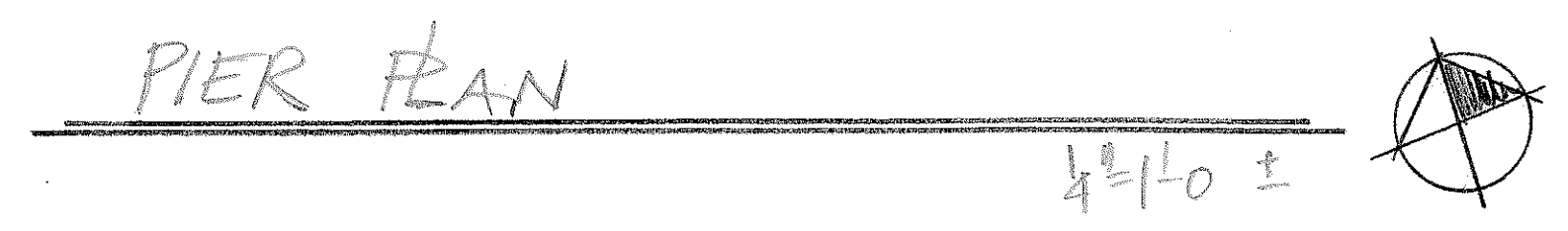
**ENGINEER'S
 COMMENTS:** _____

QTY	SIZE	TYPE	LENGTH FT. - IN.	MARK	SKETCH	A	B	C	D	E	F/R	G	H	K	J	O



PIER SCHEDULE											
MK.	QTY.	VERT.	TIES @ 12" @	DOWELS	(PROJ.)	MK.	QTY.	VERT.	TIES @ 12" @	DOWELS	(PROJ.)
A	2	6#6x31-10	33(301)	4#7x6-6	(3-0)	G	3	6#7x29-3	31(302)	4(704)	(8")#
B	4	6#6x36-3	37(301)	4#7x6-6	(do.)	H	5	6#9x28-0	29(303)	4#7x6-6	(3-0)
C	5	6#6x37-11	39(301)	4#7x6-6	(do.)	K	ONE	6#9x28-3	29(303)	4#7x6-6	(do.)
D	2	6#6x37-4	38(301)	4#7x6-6	(do.)	M	ONE	6#9x27-1	28(303)	4#7x6-6	(do.)
E	ONE	6#6x24-10	26(301)	4(704)	(4")#	N	ONE	6#9x24-6	26(303)	4#7x6-6	(do.)
F	5	6#7x44-5	46(302)	4#7x6-6	(3-0)	P	2	6#9x26-6	28(303)	4#7x6-6	(do.)

DOWELS



LEGEND

- O.F. - OUTSIDE FACE
- I.F. - INSIDE FACE
- E.F. - EACH FACE
- HORIZ. - HORIZONTAL
- VERT. - VERTICAL
- DWLS. - DOWELS
- FTG. - FOOTING
- ELEV. - ELEVATION
- E.W. - EACH WAY
- T.O.F. - TOP OF FOOTING
- B.O.F. - BOTTOM OF FOOTING
- T.O.W. - TOP OF WALL
- B.O.W. - BOTTOM OF WALL
- GRD. BM. - GRADE BEAM
- MK. - MARK
- MAS. - MASONRY
- DIAG. - DIAGONAL
- COL. - COLUMN
- PROJ. - PROJECTION
- T & B - TOP & BOTTOM
- N.F. - NEAR FACE
- F.F. - FAR FACE
- % - ON CENTER
- @ - AT EACH

NO	DATE	ISSUED FOR
10/6		REMOVE 2 PIERS
10/5		REVISED PER ESI #12

DALCO INDUSTRIES, INC.
An Employee Owned Company
AREA CODE 303 371-3950 3730 SALEM ST. DENVER, COLO. 80239

JOB HDTWWT
LOCATION FOUNTAIN, CO.
DESCRIPTION PIER PLAN & PUMPING & DISINFEC.
CONTRACTOR WEAVER GENERAL
ARCHITECT GMS, INC.

DRAWN: D.TARIN CHECKED: DATE: 10/4/11 REVISIONS: JOB NO: 10082 DRAWING NO: PD-1A