



WEAVER Construction Management
 3679 S. Huron St., Suite 404
 Englewood, CO 80110
 Phone: (303) 789-4111 FAX: (303) 789-4310

SUBMITTAL TRANSMITTAL

November 28, 2011
WCM Submittal No. 03200-013.A

PROJECT: HAROLD D. THOMPSON W.R.F.
 9001 Birdsall Road.
 Fountain, Colorado 80817

ENGINEER: G.M.S. Inc.
 611 North Weber St. # 300
 Colorado Springs, CO 80239
 719-475-2935 Roger Sams

OWNER: Lower Fountain Metropolitan Sewage Disposal District
 901 South Santa Fe Avenue
 Fountain, CO 80817

CONTRACTOR: DALCO Industries, Inc.
 3730 Salem St.
 Denver, CO 80239
 303-371-3950

SUBJECT: Resubmittal Dalco Foundation - Plan @ Pumping & Disinfection Drawings
 • PD-2, PD-3, PD-4, PD-5, PD-6

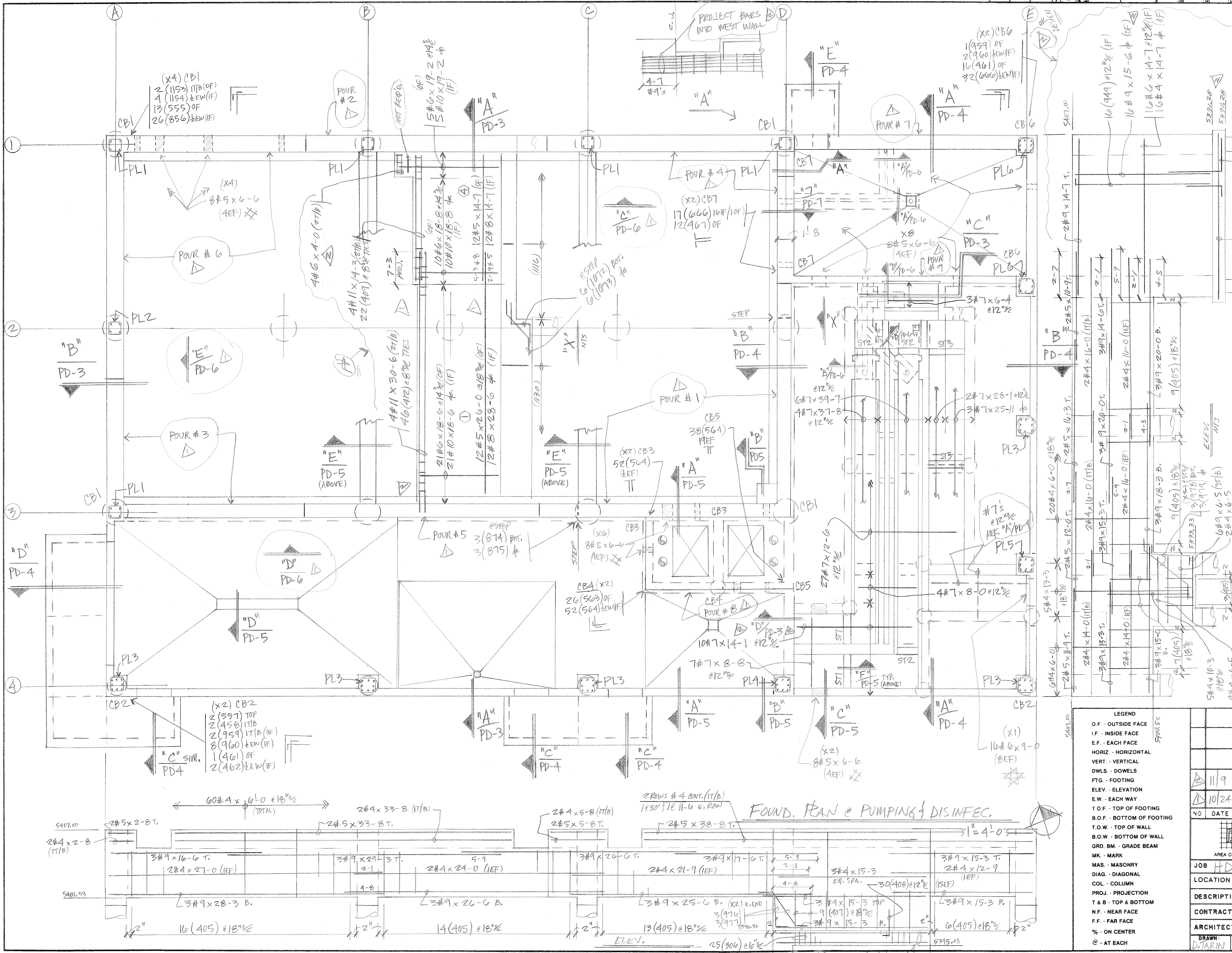
SPEC SECTION: 03200 - Concrete Reinforcement

PREVIOUS SUBMISSION DATES: 10/20/11

DEVIATIONS FROM SPEC: _____ YES X NO

CONTRACTOR'S STAMP: This submittal has been reviewed by WCM and approved with respect to the means, methods, techniques, & safety precautions & programs incidental thereto. Weaver General Construction also warrants that this submittal complies with contracted documents and comprises on deviations thereto.

<p>Contractor's Stamp:</p> <p>Date: 11/28/11 Reviewed by: _____ <input type="checkbox"/> Reviewed Without Comments <input checked="" type="checkbox"/> Reviewed With Comments</p>	<p>Engineer's Stamp:</p>
<p>ENGINEER'S COMMENTS: _____</p>	



NO.	QTY.	VERT.	TIES
PL1	5	4#7x23-4 4(782) DWLS.	24 (352) @ 14" @ SPA.
PL2	ONE	4#7x21-2 4(782) DWLS.	22 (352) @ 14" @ SPA.
PL3	5	8#8x6-11	9 (351) @ 16" @ SPA.
PL4	ONE	8#8x12-5	13 (351) @ 16" @ SPA.
PL5	ONE	8#8x14-2	15 (351) @ 16" @ SPA.
PL6	2	8#8x16-7	16 (351) @ 16" @ SPA.

(TOP) LAP (OTHER)

1-7	-	3-1-2
2-1	-	4-1-7
2-7	-	5-2-0
3-1	-	6-2-5
4-5	-	7-3-5
5-1	-	8-3-11
5-9	-	9-4-5
6-4	-	10-4-11
7-0	-	11-5-5

- LEGEND
- O.F. - OUTSIDE FACE
 - I.F. - INSIDE FACE
 - E.F. - EACH FACE
 - HORIZ. - HORIZONTAL
 - VERT. - VERTICAL
 - DWLS. - DOWELS
 - FTG. - FOOTING
 - ELEV. - ELEVATION
 - E.W. - EACH WAY
 - T.O.F. - TOP OF FOOTING
 - B.O.F. - BOTTOM OF FOOTING
 - T.O.W. - TOP OF WALL
 - B.O.W. - BOTTOM OF WALL
 - GRD. BM. - GRADE BEAM
 - MK. - MARK
 - MAS. - MASONRY
 - DIAG. - DIAGONAL
 - COL. - COLUMN
 - PROJ. - PROJECTION
 - T & B - TOP & BOTTOM
 - N.F. - NEAR FACE
 - F.F. - FAR FACE
 - % - ON CENTER
 - @ - AT EACH

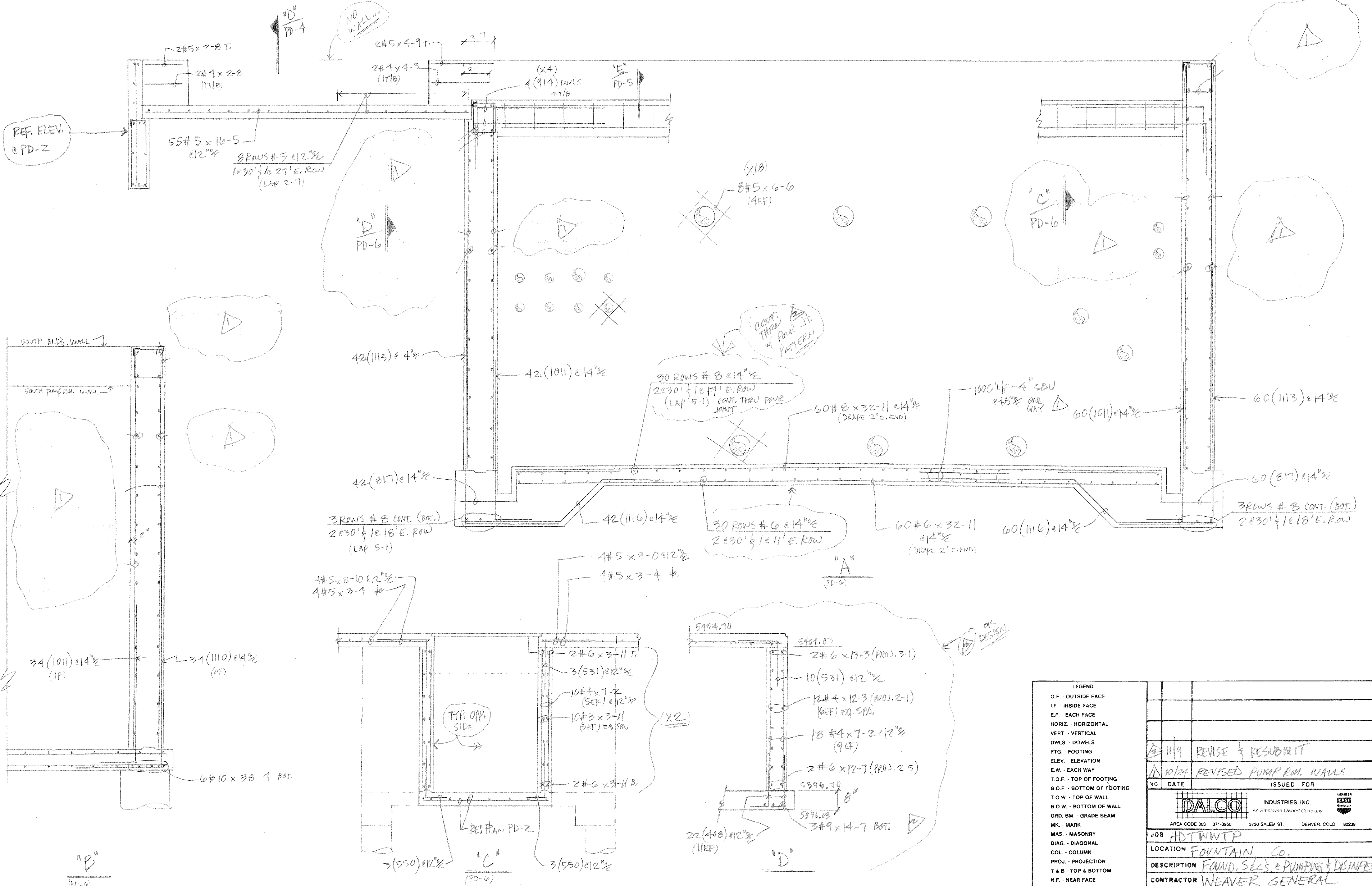
NO. DATE ISSUED FOR

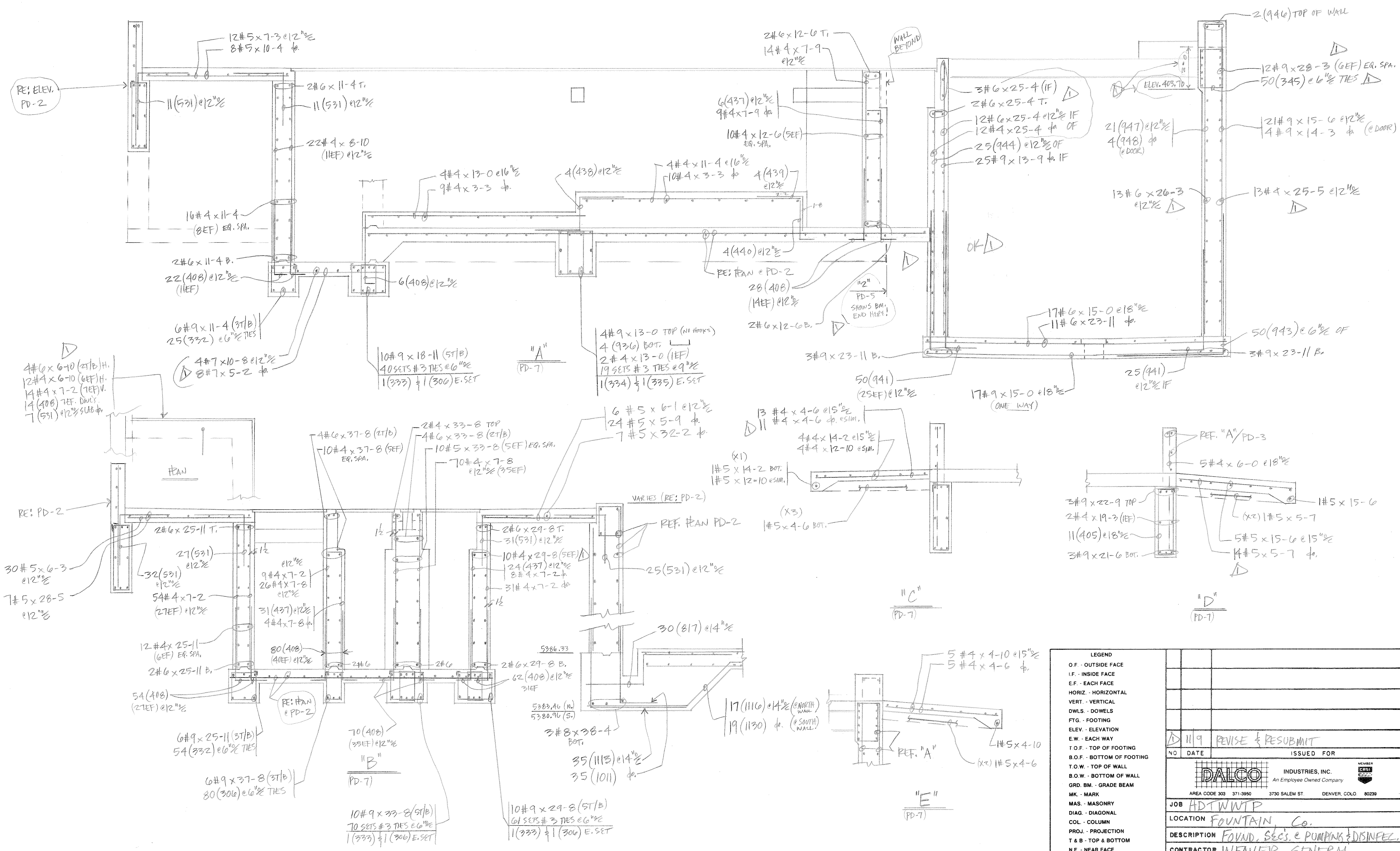
11/9 REVISE & RESUBMIT

10/24 REVISED PUMP RM. WALLS

DALCO INDUSTRIES, INC.
 An Employee Owned Company
 AREA CODE 303 371-3850 3730 SALEM ST. DENVER, COLO. 80238

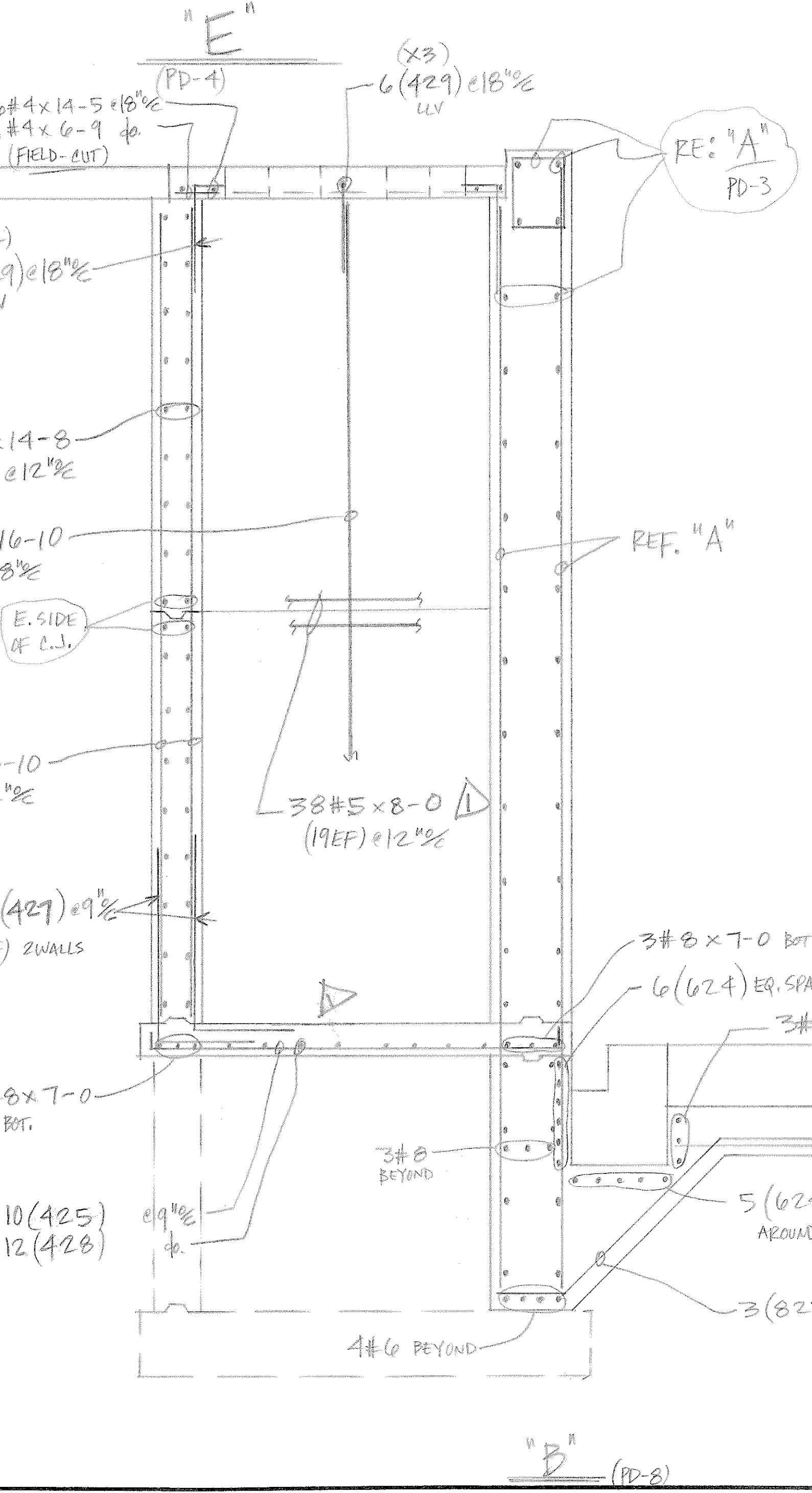
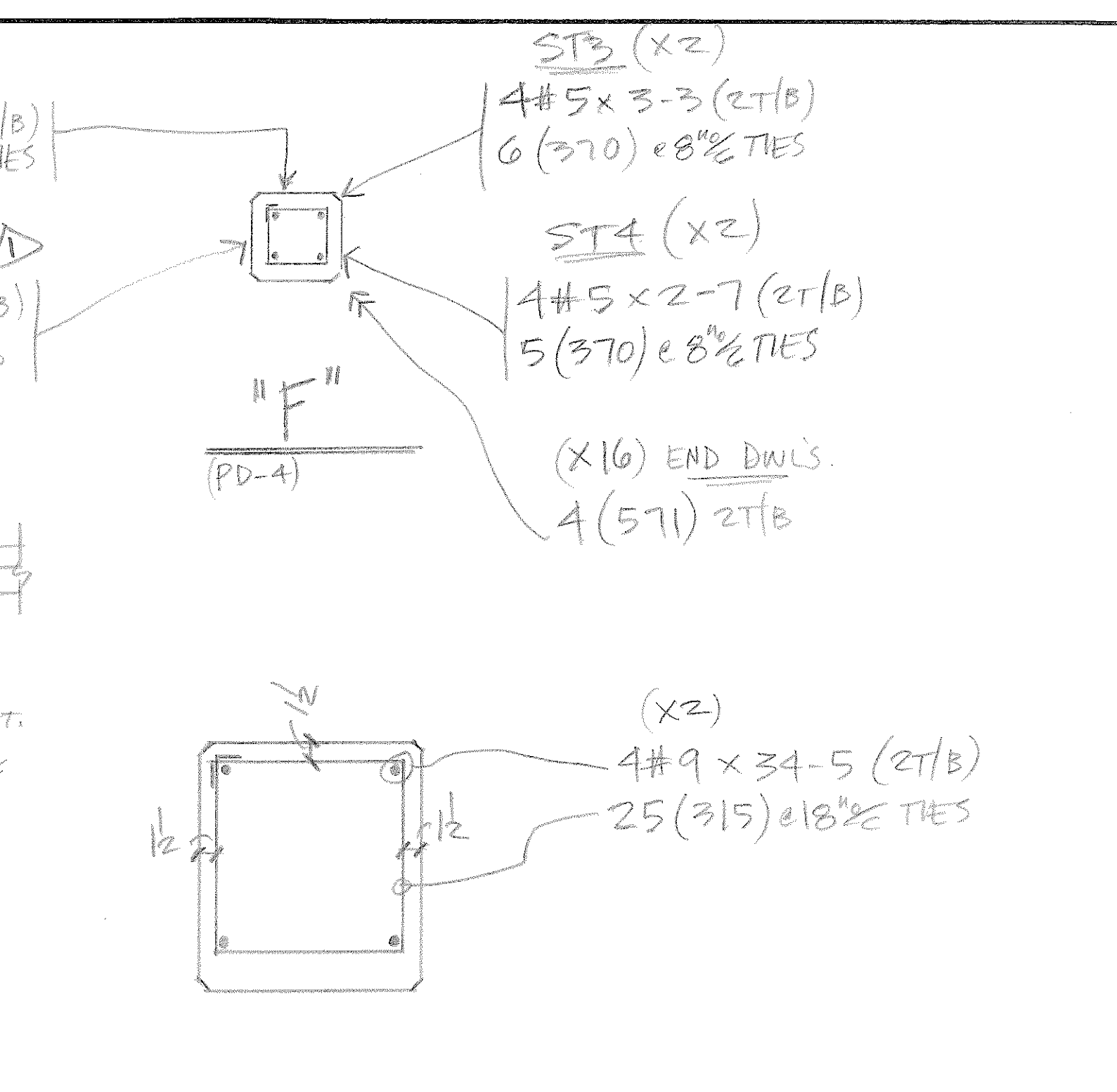
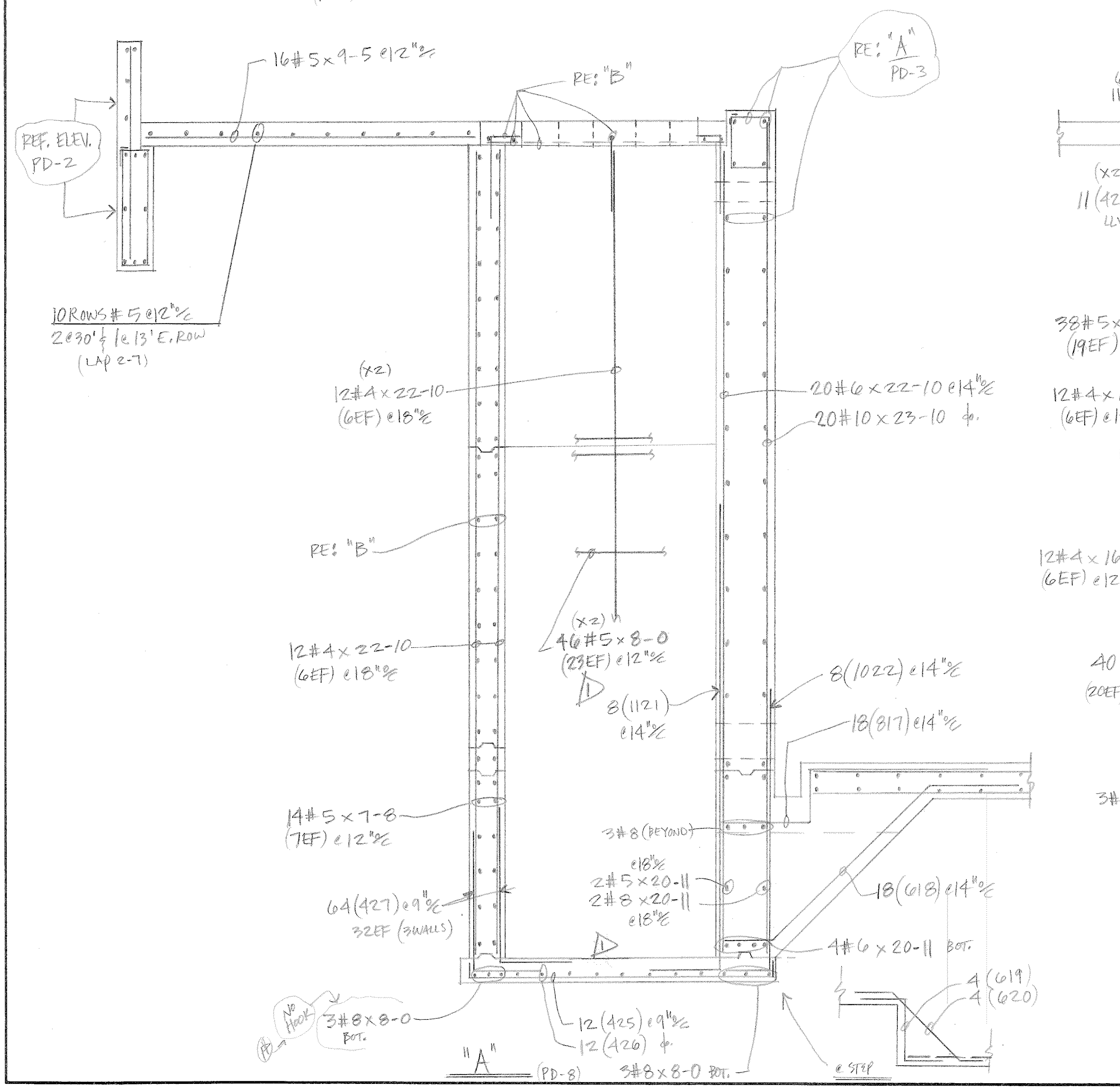
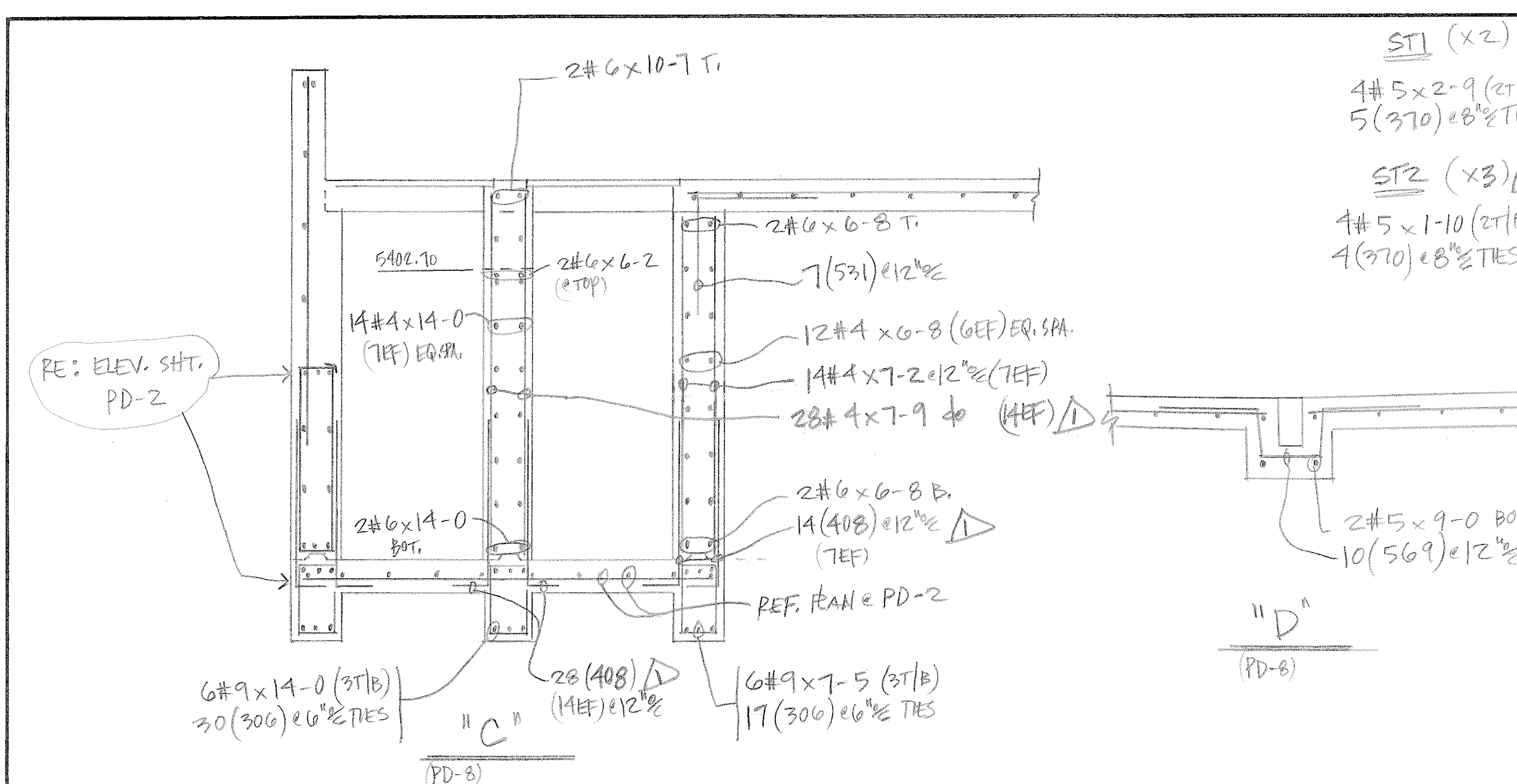
JOB HDTNWT
 LOCATION FOUNTAIN, CO.
 DESCRIPTION FOUND. PLAN & PUMPING & DISINFEC.
 CONTRACTOR WEAVER GENERAL
 ARCHITECT GMS, Inc.
 DRAWN: D.TARIN CHECKED: DATE: 10/18/11 REVISIONS: JOB NO. 10082 DRAWING NO. PD-2





LEGEND	
O.F.	OUTSIDE FACE
I.F.	INSIDE FACE
E.F.	EACH FACE
HORIZ.	HORIZONTAL
VERT.	VERTICAL
DWLS.	DOWELS
FTG.	FOOTING
ELEV.	ELEVATION
E.W.	EACH WAY
T.O.F.	TOP OF FOOTING
B.O.F.	BOTTOM OF FOOTING
T.O.W.	TOP OF WALL
B.O.W.	BOTTOM OF WALL
GRD. BM.	GRADE BEAM
MK.	MARK
MAS.	MASONRY
DIAG.	DIAGONAL
COL.	COLUMN
PROJ.	PROJECTION
T & B	TOP & BOTTOM
N.F.	NEAR FACE
F.F.	FAR FACE
%	ON CENTER
@	AT EACH

119 REVISE & RESUBMIT	
NO	DATE
ISSUED FOR	
AREA CODE 303 371-3950 3730 SALEM ST. DENVER, COLO. 80239	
JOB ADTWNTP	
LOCATION FOUNTAIN, Co.	
DESCRIPTION FOUND. SECS. & PUMPING & DISINFEC.	
CONTRACTOR WEAVER GENERAL	
ARCHITECT GMS, Inc.	
DRAWN: D. TARRIN	CHECKED:
DATE: 10/18/11	REVISIONS:
JOB NO. 10082	DRAWING NO. PD-7



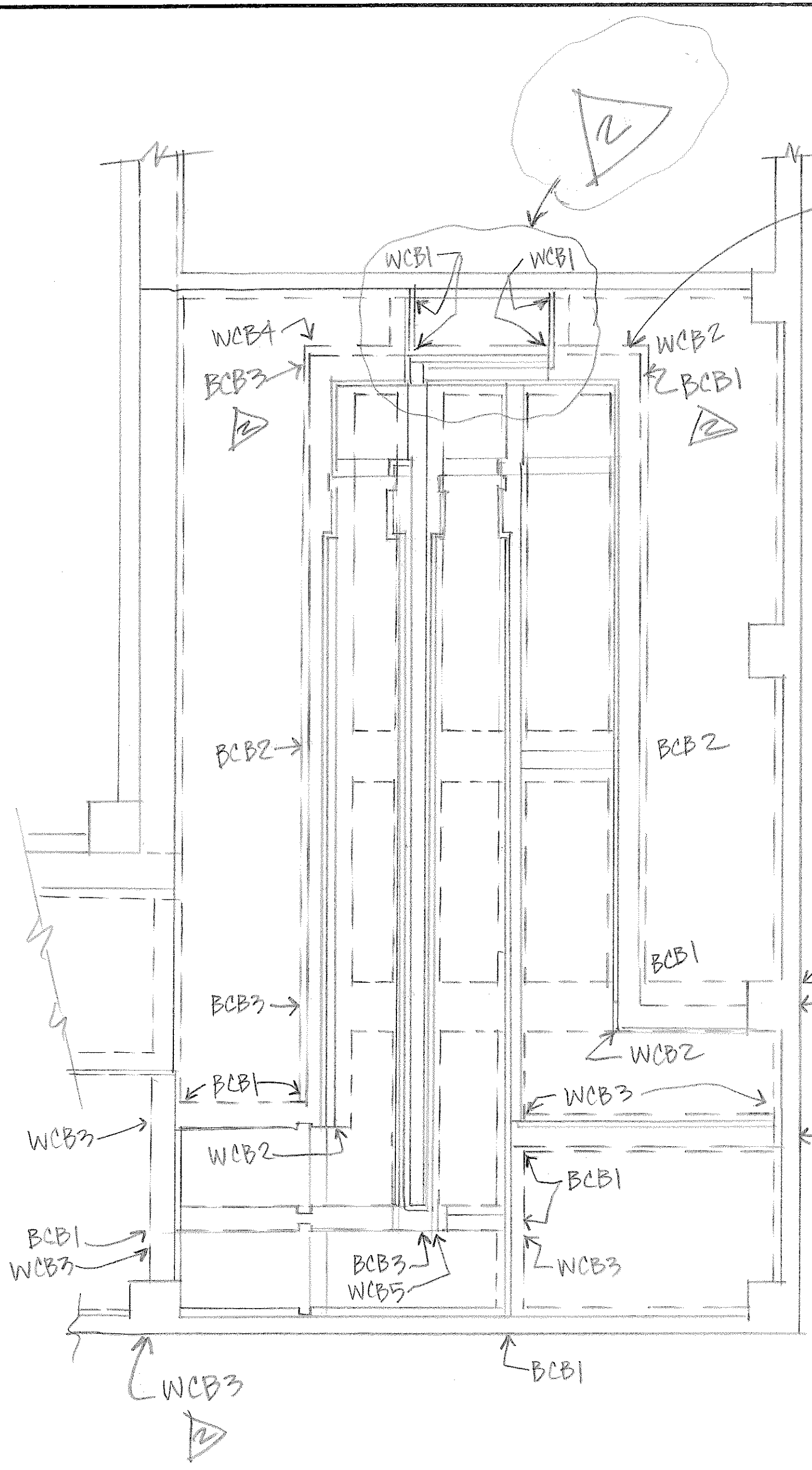
QTY	SIZE	TYPE	LENGTH FT. - IN.	MARK	SKETCH	A	B	C	D	E	F/R	G	H	K	J	O
4	T2		409		□	+	0-9	3-3	+	+						
3	T2		306		□	+	0-9	1-5	+	+						
4	T2		407		□	+	0-9	3-9	+	+						
4	T2		408		□		0-8	3-6								
4	T2		409		□	+	1-5	1-5	+	+						
11	T2		1110		□		4-4	13-3								
10	T2		1011		□		1-10	8-0								
4	T2		412		□	+	1-1	1-5	+	+						
11	T2		1113		□		4-9	13-3								
9	T2		914		□		1-7	7-4								
3	T2		315		□	+	1-5	1-5	+	+						
11	T2		1116		□		3-0	3-0	5-0					2-1	+	
8	T2		817		□		2-10	1-6	5-2							
6	T2		618		□		1-6	+	2-8					4-6	4-6	
6	T2		619		□		3-0	2-6	3-0							
6	T2		620		□		3-0	+	3-0					2-6	2-6	
11	T2		1121		□		2-0	13-3								
10	T2		1022		□		1-4	8-0								
8	T2		823		□		1-6	+	4-0					3-2	3-2	
6	T2		624		□		5-6	5-6								
4	T2		425		□		0-8	8-0	0-8							
4	T2		426		□		0-8	8-0	0-8							
4	T2		427		□		2-0	4-0								
4	T2		428		□		0-8	6-10	0-8							
4	T2		429		□		0-8	2-2								
11	T2		1130		□		3-0	+	5-0					4-4	4-4	
5	T2		531		□		2-6	2-6								
3	T2		332		□	+	1-3	1-5	+	+						
3	T2		333		□	+	1-5	1-9	+	+						
3	T2		334		□	+	1-9	2-1	+	+						
3	T2		335		□	+	0-9	2-1								
9	T2		936		□		1-7	13-0	1-7							
4	T2		437		□		0-8	5-10								
4	T2		438		□		2-2	1-8	2-2							
4	T2		439		□		1-8	2-2								
4	T2		440		□		0-8	2-0								
9	T2		941		□		1-6	5-0								
9	T2		942		□		1-6	6-8								NOT REQ'D. Δ
9	T2		943		□		7-0	7-0								
9	T2		944		□		0-10	11-3								
3	T2		345		□	+	1-1	1-9	+	+						
9	T2		946		□		1-7	20-4								
9	T2		947		□		0-10	15-6								
9	T2		948		□		0-10	14-3								
9	T2		949		□		0-10	14-11								
5	T2		550		□		1-0	2-8								
3	T2		351		□	+	1-9	1-9	+	+						

LEGEND
 O.F. - OUTSIDE FACE
 I.F. - INSIDE FACE
 E.F. - EACH FACE
 HORIZ. - HORIZONTAL
 VERT. - VERTICAL
 DWLS. - DOWELS
 FTG. - FOOTING
 ELEV. - ELEVATION
 E.W. - EACH WAY
 T.O.F. - TOP OF FOOTING
 B.O.F. - BOTTOM OF FOOTING
 T.O.W. - TOP OF WALL
 B.O.W. - BOTTOM OF WALL
 GRD. BM. - GRADE BEAM
 MK. - MARK
 MAS. - MASONRY
 DIAG. - DIAGONAL
 COL. - COLUMN
 PROJ. - PROJECTION
 T & B - TOP & BOTTOM
 N.F. - NEAR FACE
 F.F. - FAR FACE
 % - ON CENTER
 @ - AT EACH

REVISIONS
 NO. DATE ISSUED FOR
 119 REVISE & RESUBMIT

DALCO INDUSTRIES, INC.
 An Employee Owned Company
 AREA CODE 303 371-3950 3730 SALEM ST. DENVER, COLO. 80239

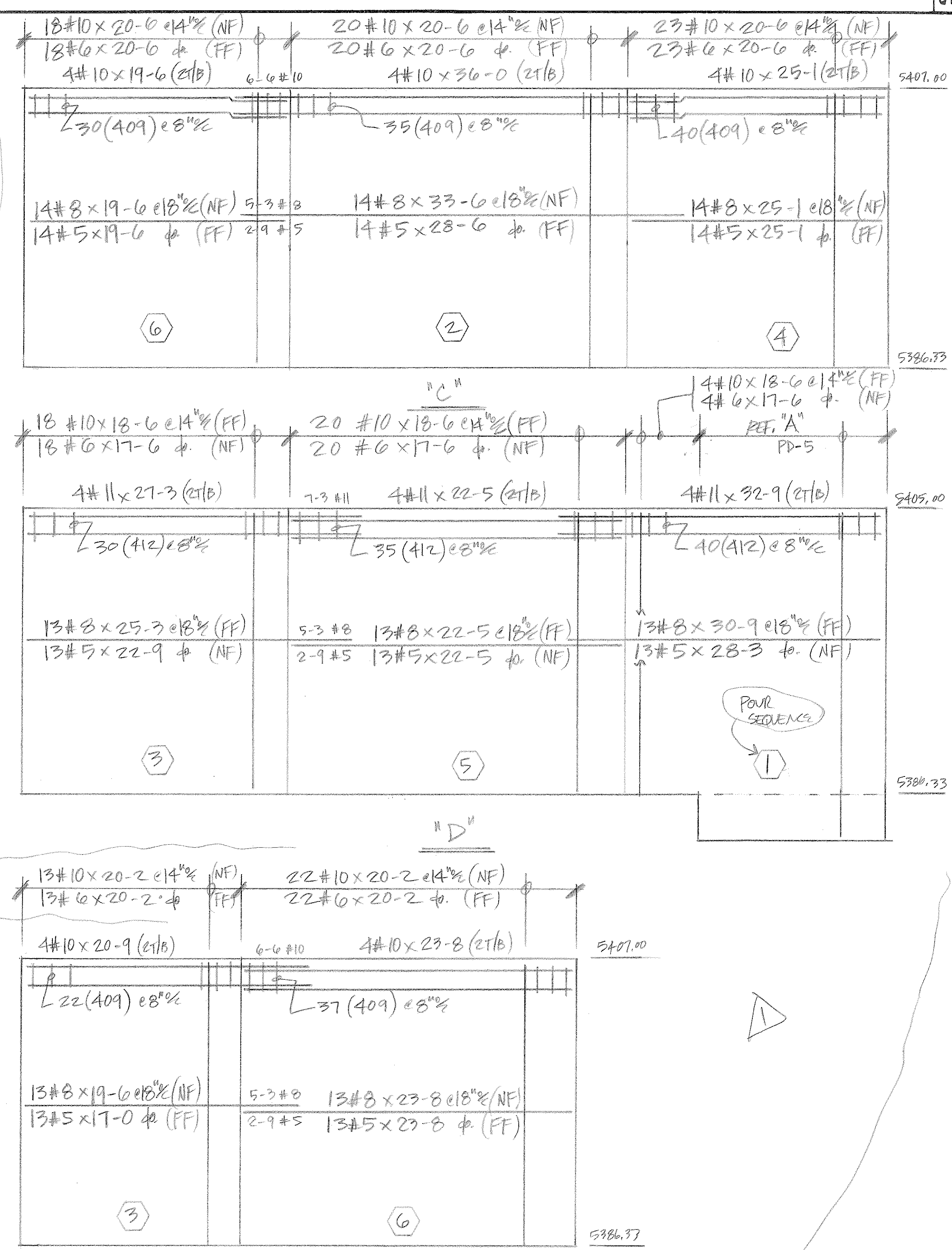
JOB HDTWWTP
LOCATION FOUNTAIN, Co.
DESCRIPTION FOUND. SEC. PUMPING & DISINFEC.
CONTRACTOR WEAVER GENERAL
ARCHITECT GMS, Inc.
 DRAWN: D. TARIN CHECKED: DATE: 10/18/11 REVISIONS: JOB NO. 10082 DRAWING NO. PD-5



PARTIAL SLAB PLAN

BM. 24" x 1-8#
10#10x13-2 (5T/B)
24 SETS #3 @ 6" SET
1.333 & 1.300 SET

HOLD VERT. UP ENDS



QTY	SIZE	TYPE	LENGTH FT. - IN.	MARK	SKETCH	A	B	C	D	E	F/R	G	H	K	J	O
3	T2		352		+		1-4	1-4								
11	17		1153				6-9	6-9								
11	17		1154				5-0	6-9								
5	17		555				4-0	4-0								
8	17		856				3-6	5-3								
5	17		557				2-9	2-9								
4	17		458				2-3	2-3								
9	17		959				5-8	5-8								
9	17		960				4-0	5-8								
4	17		461				2-9	2-9								
4	17		462				1-9	2-9								
5	17		563				3-3	3-3								
5	17		564				2-3	3-3								
6	17		665				4-0	4-0								
6	17		666				2-9	4-0								
4	17		467				1-9	3-6								
3	17		368				1-4	2-6								
5	S4		569			2-0	0-5	1-6	0-5				2-0			W/TRENCH
3	T2		370			+	0-5	0-5	+	+						
5	17		571				0-10	2-6								
10	20		1072				5-1	2-6	5-1							
10	3		1073				5-1	+	5-1					2-6	2-6	
8	20		874				4-0	2-6	4-0							
8	3		875				4-0	+	4-0					2-6	2-6	
9	20		976				4-7	5-6	4-7							
9	3		977				4-7	+	4-7					5-6	5-6	
9	20		978				4-7	7-3	4-7							
9	3		979				4-7	+	4-7					7-3	7-3	
8	17		880				5-3	5-3								
8	17		881				3-6	5-3								
7	17		782				1-2	8-0								
4	20		483				0-8	3-10	1-2							
4	20		484				0-8	2-8	1-2							

GRADE BM. CORNER BARS

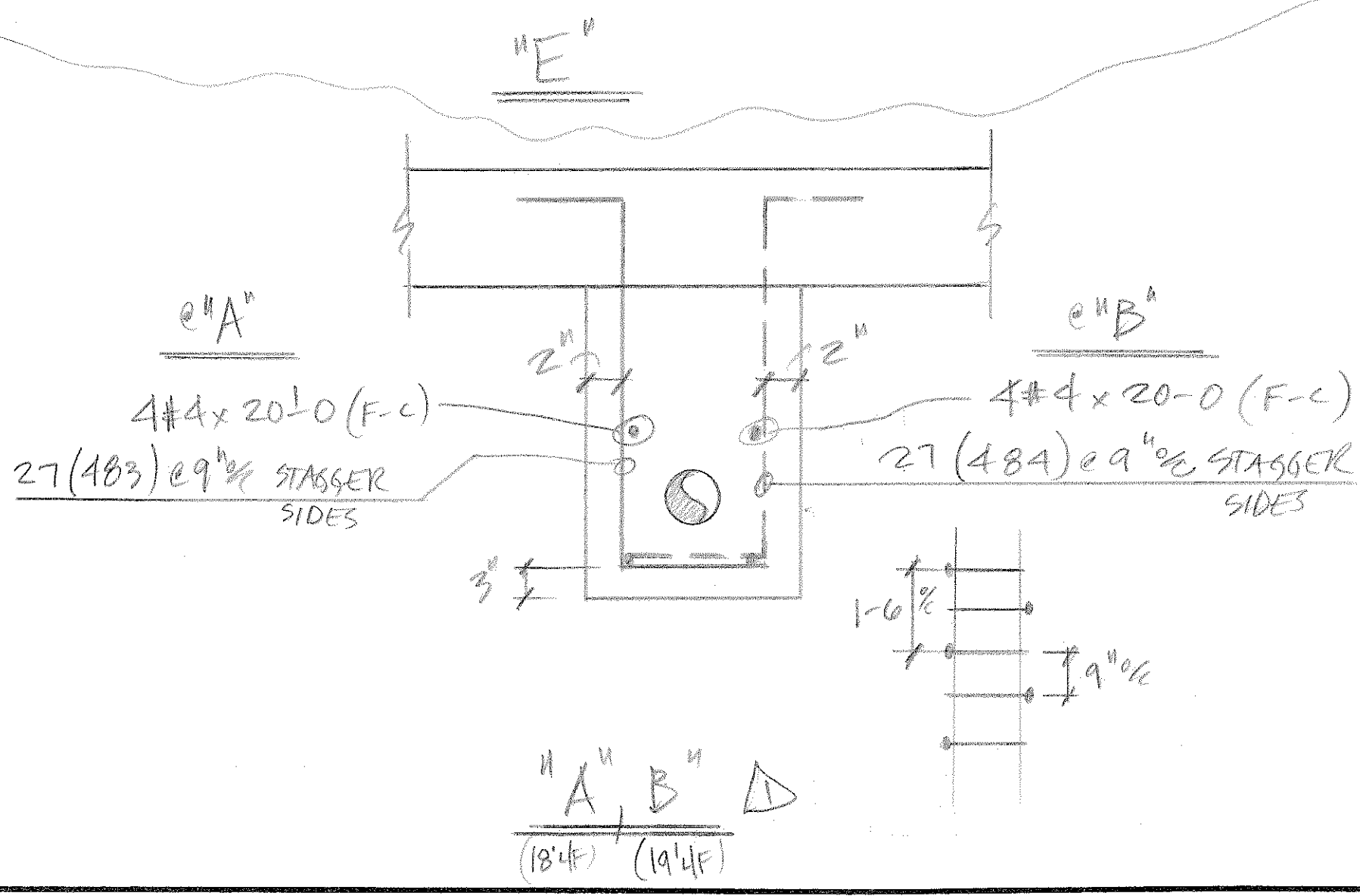
NK.	QTY.	BAR(S) (MATCH HORZ.)	(#)
BCB1	9	6 (959) 3T/B	
BCB2	2	8 (959) 4T/B	
BCB3	4	10 (959) 5T/B	

WALL CORNER BARS

NK.	QTY.	BAR(S) (LOC.)	(#)
WCB1	4	4 (666) 2T/B 10 (368) 5EF	TT
WCB2	4	2 (665) 1T/B (OF) 4 (666) 2EW (IF) 6 (461) OF 12 (462) 2EW (IF)	TT
WCB3	7	2 (665) 4 (666) 8 (461) φ 10 (462)	φ φ

WALL CORNER BARS (CONT.)

NK.	QTY.	BAR(S) (LOC.)	(#)
WCB4	ONE	2 (665) 1T/B (OF) 4 (666) 2EW (IF) 5 (563) OF 10 (564) 2EW (IF)	TT
WCB5	ONE	4 (666) 2T/B 2 (467) 1EF 10 (564) 5EF	TT



- LEGEND
- O.F. - OUTSIDE FACE
 - I.F. - INSIDE FACE
 - E.F. - EACH FACE
 - HORIZ. - HORIZONTAL
 - VERT. - VERTICAL
 - DWLS. - DOWELS
 - FTG. - FOOTING
 - ELEV. - ELEVATION
 - E.W. - EACH WAY
 - T.O.F. - TOP OF FOOTING
 - B.O.F. - BOTTOM OF FOOTING
 - T.O.W. - TOP OF WALL
 - B.O.W. - BOTTOM OF WALL
 - GRD. BM. - GRADE BEAM
 - MK. - MARK
 - MAS. - MASONRY
 - DIAG. - DIAGONAL
 - COL. - COLUMN
 - PROJ. - PROJECTION
 - T & B - TOP & BOTTOM
 - N.F. - NEAR FACE
 - F.F. - FAR FACE
 - φ - ON CENTER
 - @ - AT EACH

11/9 REVISE & RESUBMIT
10/24 REVISED PUMP RM. WALLS & PIRE

NO. DATE ISSUED FOR ENCASE.

DALCO INDUSTRIES, INC.
An Employee Owned Company

AREA CODE 303 371-3950 3730 SALEM ST. DENVER, COLO. 80239

JOB HDTWNTP
LOCATION FOUNTAIN, CO.
DESCRIPTION PARTIAL FOUND. PLAN
CONTRACTOR WEAVER GEN.
ARCHITECT GMS, INC.
DRAWN: D.JARIN CHECKED: DATE: 10/18/11 REVISIONS: JOB NO. 100822 DRAWING NO. PD-6