



WEAVER Construction Management
 3679 S. Huron St., Suite 404
 Englewood, CO 80110
 Phone: (303) 789-4111 FAX: (303) 789-4310

SUBMITTAL TRANSMITTAL

October 20, 2011
WCM Submittal No. 03200-013

PROJECT: **HAROLD D. THOMPSON W.R.F.**
 9001 Birdsell Road.
 Fountain, Colorado 80817

ENGINEER: **G.M.S. Inc.**
 611 North Weber St. # 300
 Colorado Springs, CO 80239
 719-475-2935 Roger Sams

OWNER: **Lower Fountain Metropolitan Sewage Disposal District**
 901 South Santa Fe Avenue
 Fountain, CO 80817

CONTRACTOR: **DALCO Industries, Inc.**
 3730 Salem St.
 Denver, CO 80239
 303-371-3950

SUBJECT Dalco Foundation - Plan @ Pumping & Disinfection Drawings
 • PD-2, PD-3, PD-4, PD-5, PD-6

SPEC SECTION: 03200 - Concrete Reinforcement

PREVIOUS SUBMISSION DATES: none

DEVIATIONS FROM SPEC: _____ YES X NO

CONTRACTOR'S STAMP: This submittal has been reviewed by WCM and approved with respect to the means, methods, techniques, & safety precautions & programs incidental thereto. Weaver General Construction also warrants that this submittal complies with contracted documents and comprises on deviations thereto.

<p>Contractor's Stamp:</p> <p>Date: 10-20-2011</p> <p>Reviewed by: _____</p> <p>() Reviewed Without Comments</p> <p>(X) Reviewed With Comments</p>	<p>Engineer's Stamp:</p>
<p>ENGINEER'S COMMENTS: _____</p>	



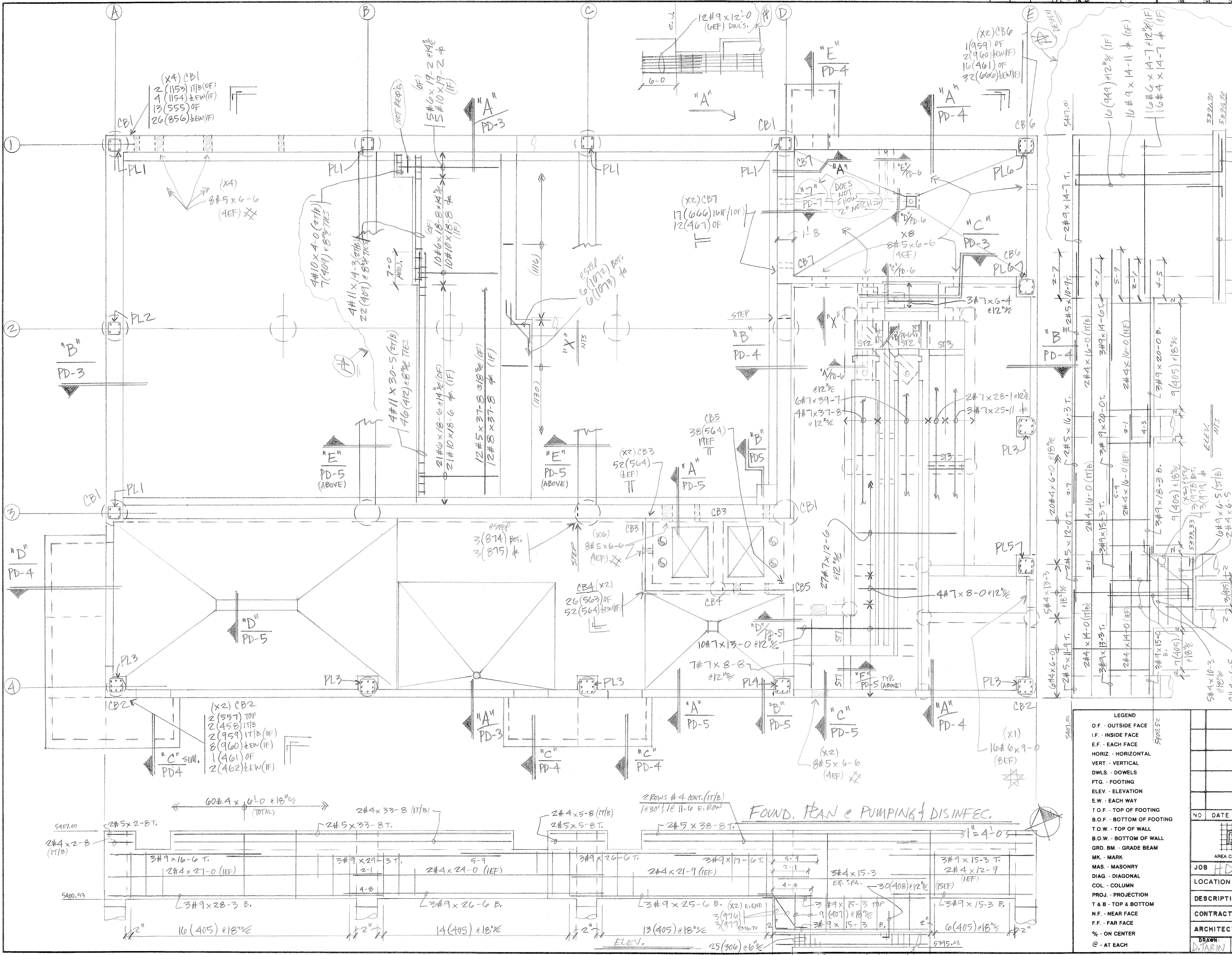
**HAROLD D. THOMPSON REGIONAL
RECLAMATION FACILITY
9001 Birdsell Road
Fountain, Colorado 80817**

Section # 03200 – Concrete Reinforcement
Submittal 03200-013 Dalco

Submitted by: DALCO Industries, Inc.
Foundation, Plan@ Pumping & Disinfection

Contractors Review Comments: Deviations from the Specification / Drawings,
Engineer to verify:

1. Dalco Drawings have circled request for verification, please reply.
2. DALCO Drawing PD-5, Section "C" (GMS Sheet, PD-8, Section "C")
 - Engineer is requested to provide clarification for the Waterstop interfering with the Grade Beam #4 Stirrups and the three #9 Rebar located on the bottom.
3. End of Review



PILASTER SCHEDULE

NO.	QTY.	VERT.	TIES (3" x 2" TOP BAR, 2" SPA.)
PL1	5	4#7 x 23-1	24 (352) @ 14" C/S PA.
PL2	ONE	4#7 x 20-11	22 (352) @ 14" C/S PA.
PL3	5	8#8 x 6-8	9 (351) @ 16" C/S PA.
PL4	ONE	8#8 x 12-2	13 (351) @ 16" C/S PA.
PL5	ONE	8#8 x 13-11	15 (351) @ 16" C/S PA.
PL6	2	8#8 x 16-4	16 (351) @ 16" C/S PA.

(TOP) LAP (OTHER)

1-7	-	3-1-2
2-1	-	4-1-7
2-7	-	5-2-0
3-1	-	6-2-5
4-5	-	7-3-5
5-1	-	8-3-11
5-9	-	9-4-5
6-4	-	10-4-11
7-0	-	11-5-5

- LEGEND
- O.F. - OUTSIDE FACE
 - I.F. - INSIDE FACE
 - E.F. - EACH FACE
 - HORIZ. - HORIZONTAL
 - VERT. - VERTICAL
 - DWLS - DOWELS
 - FTG. - FOOTING
 - ELEV. - ELEVATION
 - E.W. - EACH WAY
 - T.O.F. - TOP OF FOOTING
 - B.O.F. - BOTTOM OF FOOTING
 - T.O.W. - TOP OF WALL
 - B.O.W. - BOTTOM OF WALL
 - GRD. BM. - GRADE BEAM
 - MK. - MARK
 - MAS. - MASONRY
 - DIAG. - DIAGONAL
 - COL. - COLUMN
 - PROJ. - PROJECTION
 - T & B - TOP & BOTTOM
 - N.F. - NEAR FACE
 - F.F. - FAR FACE
 - % - ON CENTER
 - @ - AT EACH

NO DATE ISSUED FOR

DALCO INDUSTRIES, INC.
An Employee Owned Company

AREA CODE 303 371-3850 3730 SALEM ST. DENVER, COLO. 80239

JOB **HDTWNT**

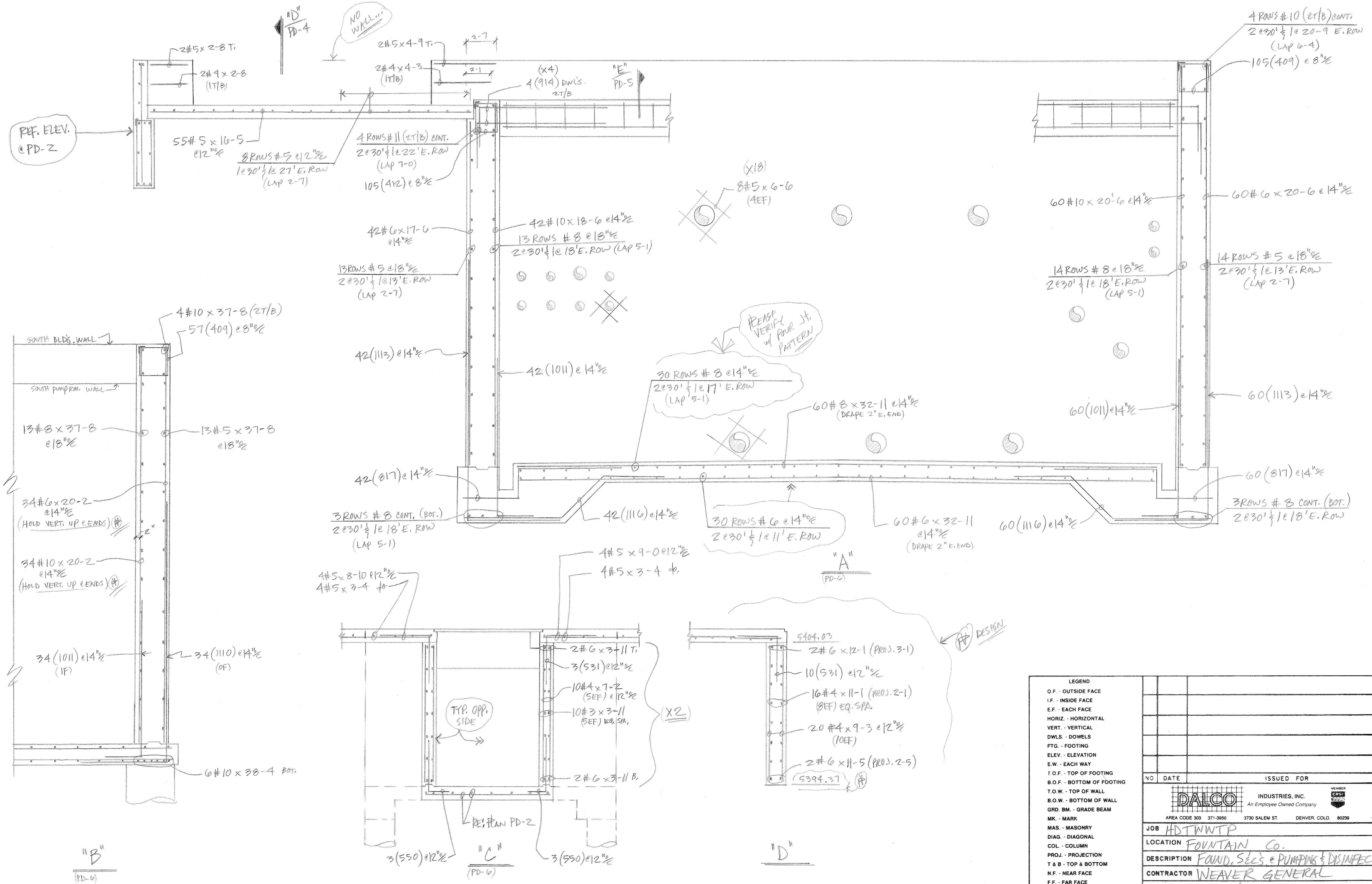
LOCATION **FOUNTAIN, CO.**

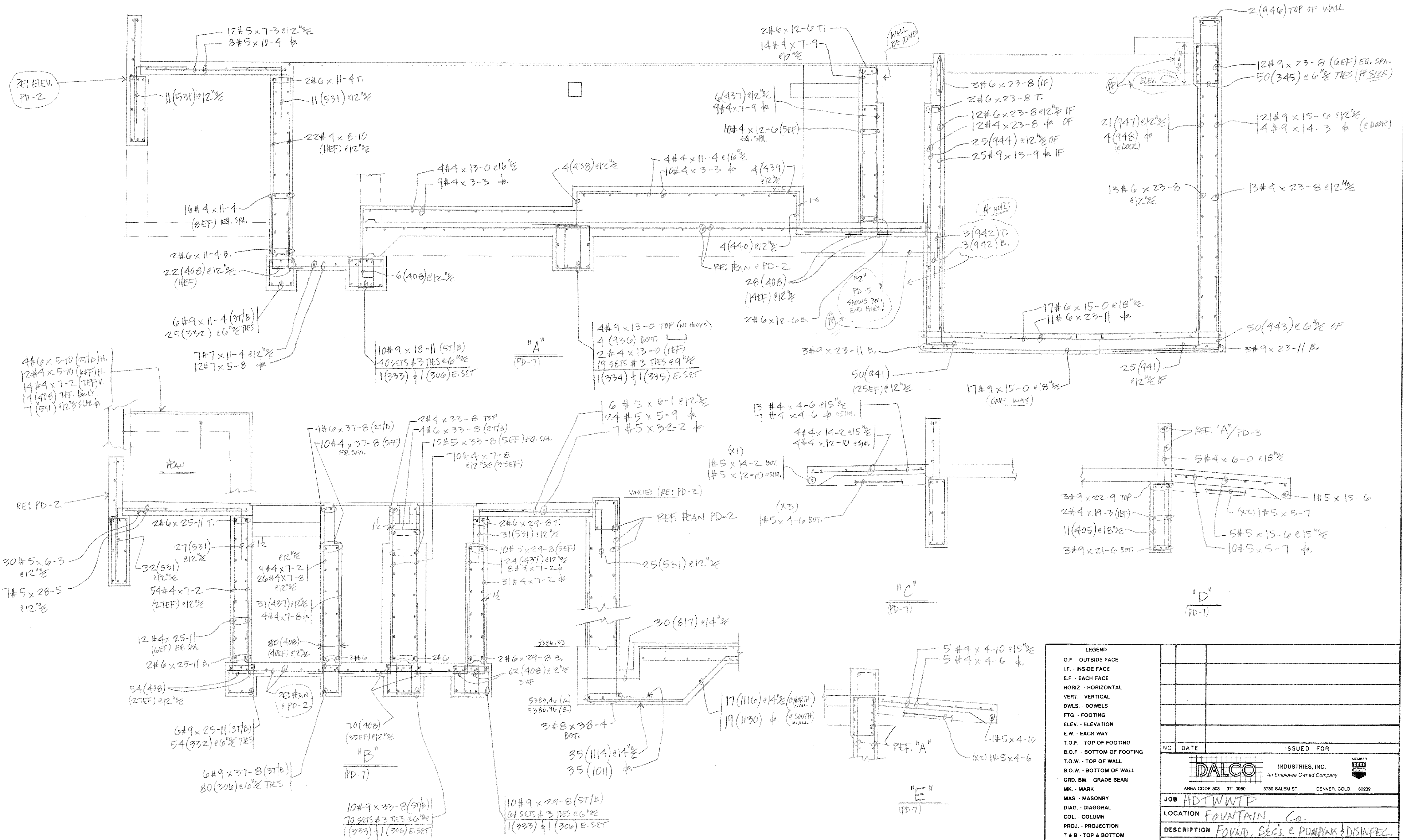
DESCRIPTION **FOUND. PLAN & PUMPING & DISINFEC.**

CONTRACTOR **WEAVER GENERAL**

ARCHITECT **GMS, Inc.**

DRAWN: D.TARIN CHECKED: DATE: 10/18/11 REVISIONS: JOB NO. 10082 DRAWING NO. PD-2

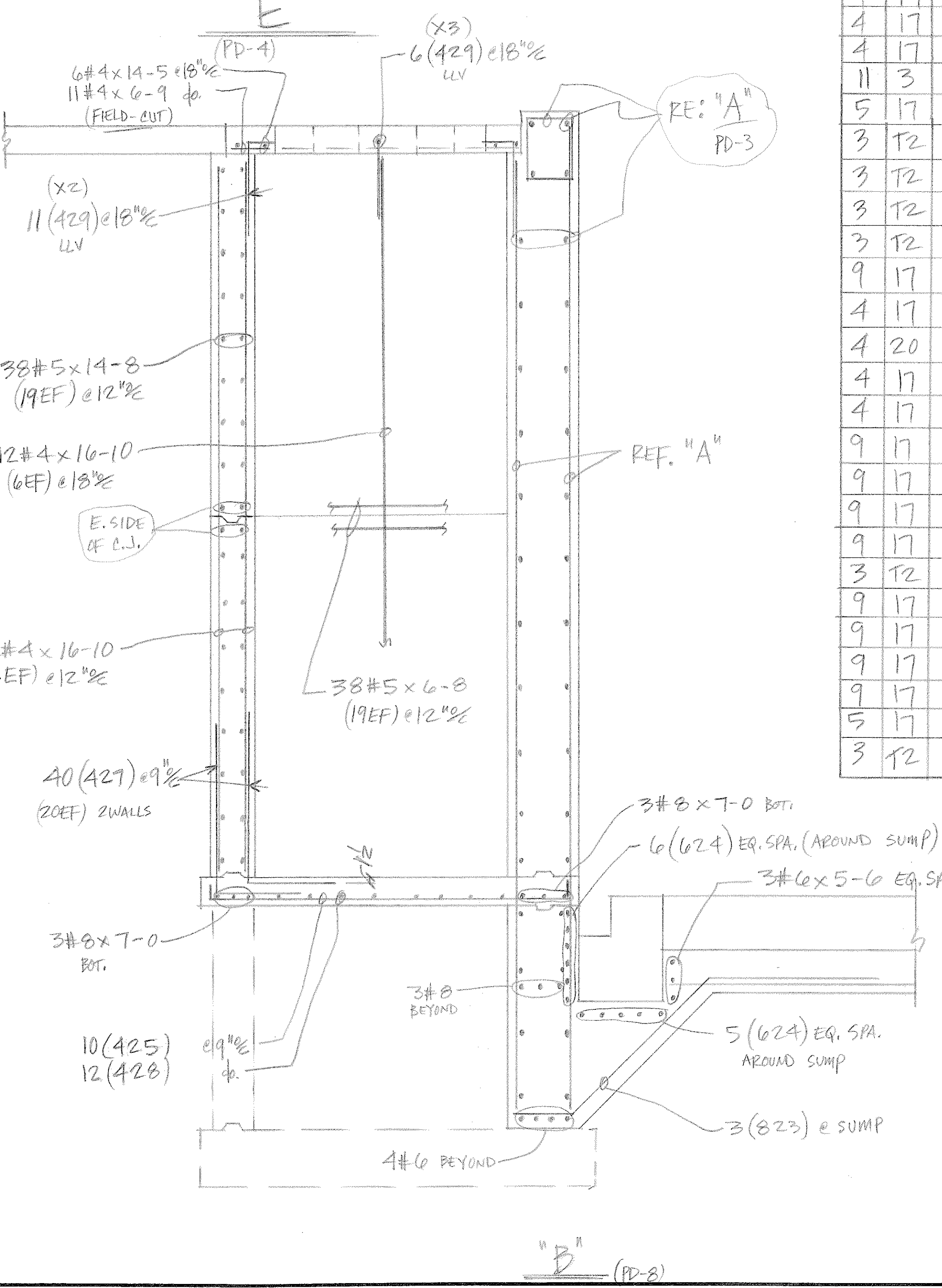
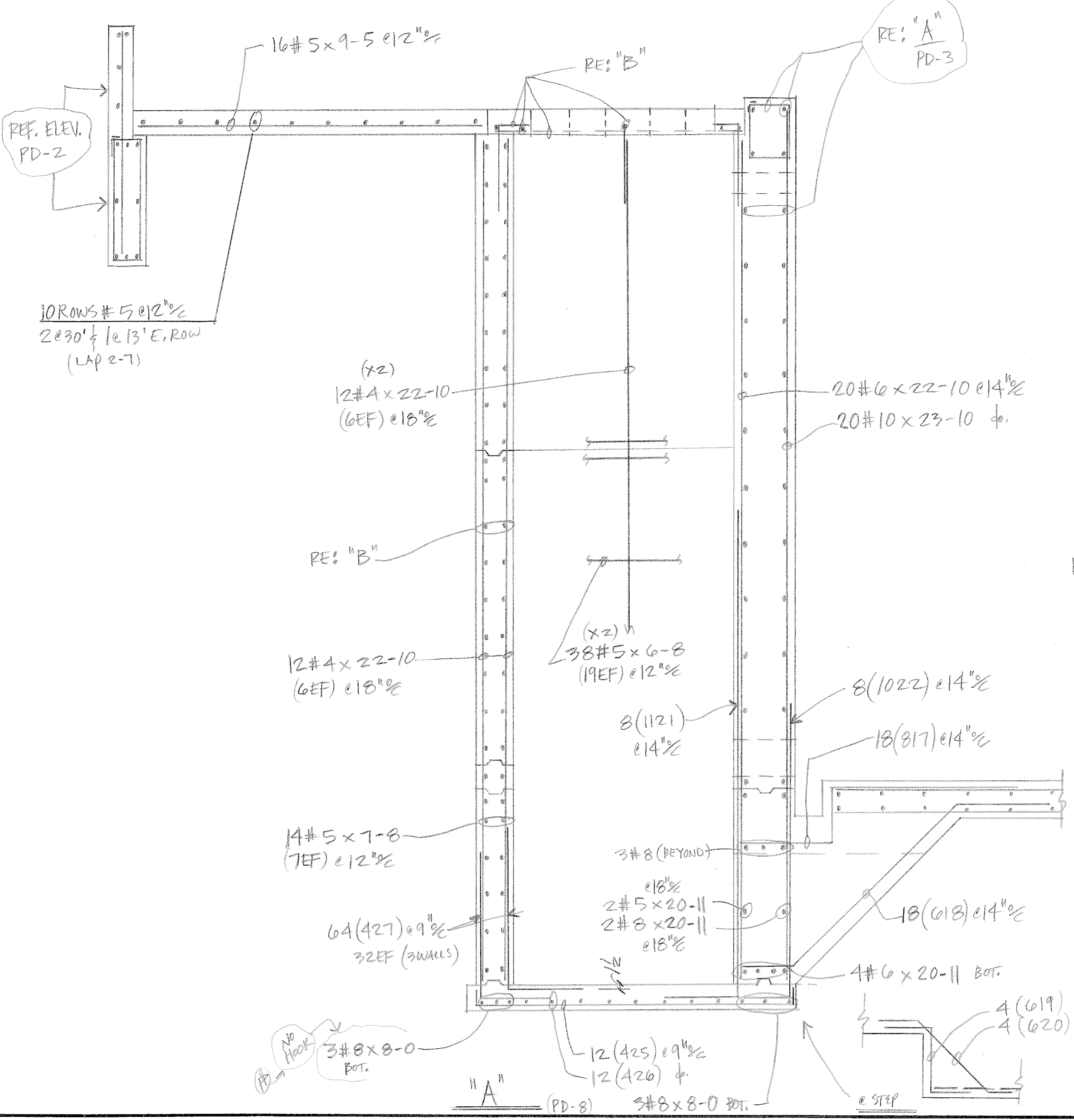
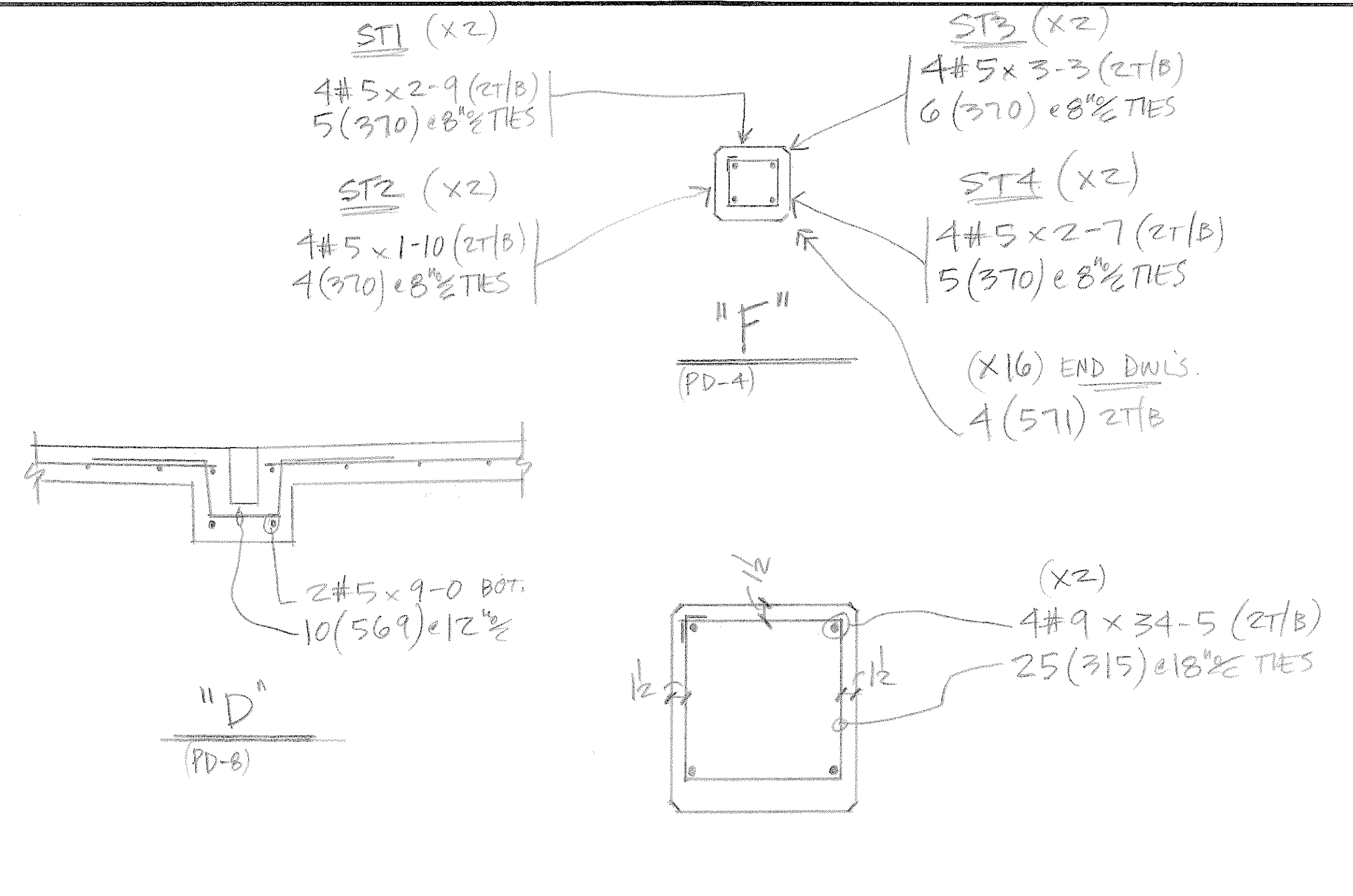
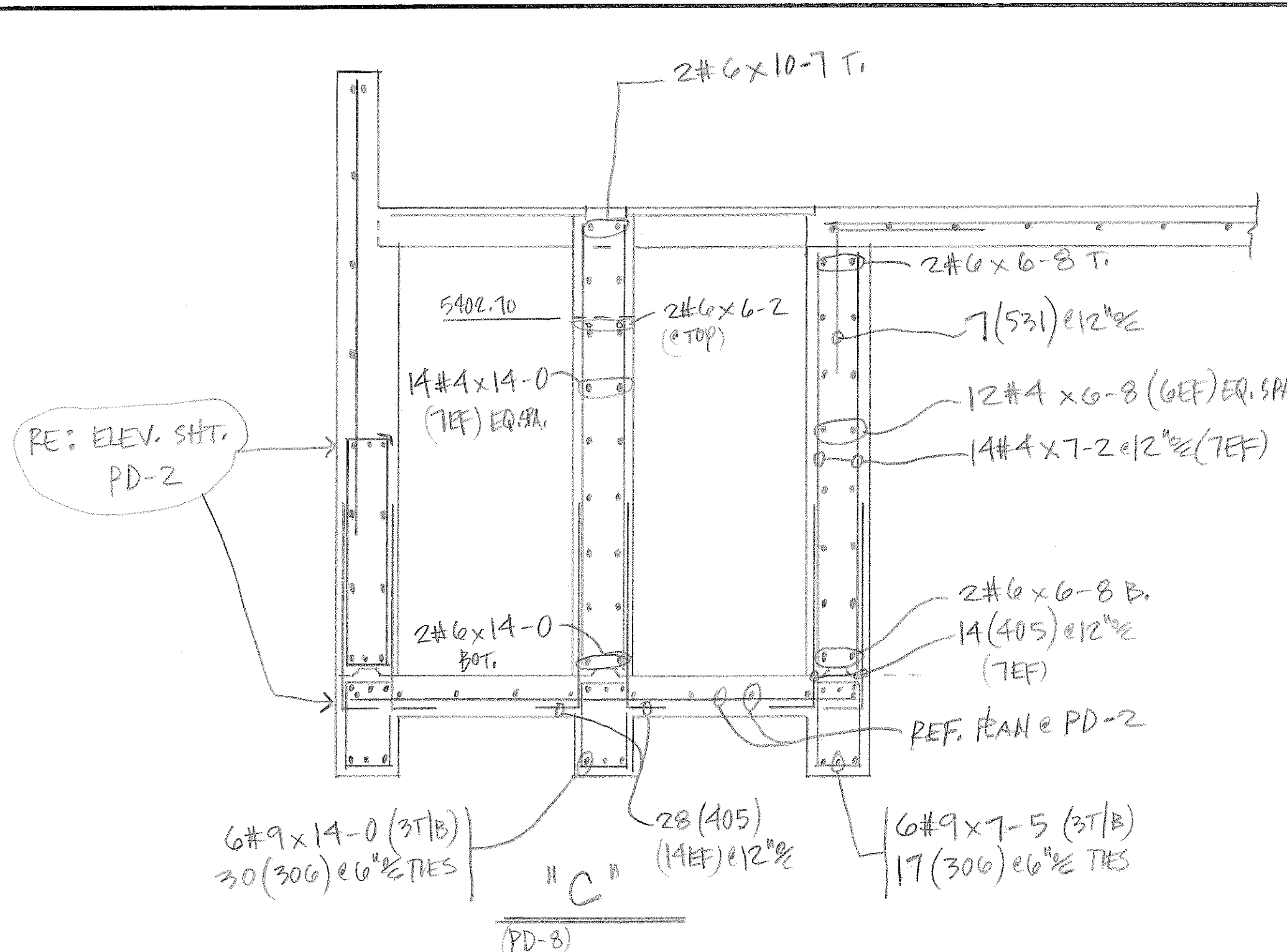




LEGEND	
O.F.	OUTSIDE FACE
I.F.	INSIDE FACE
E.F.	EACH FACE
HORIZ.	HORIZONTAL
VERT.	VERTICAL
DWLS.	DOWELS
FTG.	FOOTING
ELEV.	ELEVATION
E.W.	EACH WAY
T.O.F.	TOP OF FOOTING
B.O.F.	BOTTOM OF FOOTING
T.O.W.	TOP OF WALL
B.O.W.	BOTTOM OF WALL
GRD. BM.	GRADE BEAM
MK.	MARK
MAS.	MASONRY
DIAG.	DIAGONAL
COL.	COLUMN
PROJ.	PROJECTION
T & B	TOP & BOTTOM
N.F.	NEAR FACE
F.F.	FAR FACE
%	ON CENTER
@	AT EACH

NO	DATE	ISSUED FOR

AREA CODE 303 371-3950 3730 SALEM ST. DENVER COLO. 80239	
JOB HDTWNTP	
LOCATION Fountain, Co.	
DESCRIPTION FOUND. SECS. & PUMPING & DISINF.	
CONTRACTOR WEAVER GENERAL	
ARCHITECT GMS, INC.	
DRAWN: D. TAPW	CHECKED: 10/18/11
DATE: 10/18/11	REVISIONS: 10082
JOB NO. 10082	DRAWING NO. PD-7



QTY	SIZE	TYPE	LENGTH FT - IN	MARK	SKETCH	A	B	C	D	E	F/R	G	H	K	J	O
4	T2		409	□		+	0-9	3-3	+	+		+				
3	T2		306	□		+	0-9	1-5	+	+		+				
4	T2		407	□		+	0-9	3-9	+	+		+				
4	T7		408	□			0-8	3-6								
4	T2		409	□		+	1-5	1-5	+	+		+				
11	T7		1110	□			4-4	13-3								
10	T7		1011	□			1-10	8-0								
4	T2		412	□		+	1-1	1-5	+	+		+				
11	T7		1113	□			4-9	13-3								
9	T7		914	□			1-7	7-4								
3	T2		315	□		+	1-5	1-5	+	+		+				
11	T3		1116	□			3-0	3-0	5-0					2-1	+	
8	T0		817	□			2-10	1-6	5-2							
6	T3		618	□			1-6	+	2-8					4-6	4-6	
6	T0		619	□			3-0	2-6	3-0							
6	T3		620	□			3-0	+	3-0					2-6	2-6	
11	T7		1121	□			2-0	13-3								
10	T7		1022	□			1-4	8-0								
8	T3		823	□			1-6	+	4-0					3-2	3-2	
6	T7		624	□			5-6	5-6								
4	T7		425	□			0-8	8-6	0-8							
4	T7		426	□			0-8	8-0	0-8							
4	T7		427	□			2-0	4-0								
4	T7		428	□			0-8	6-10	0-8							
4	T7		429	□			0-8	2-2								
11	T3		1130	□			3-0	+	5-0					4-4	4-4	
5	T7		531	□			2-6	2-6								
3	T2		332	□		+	1-3	1-5	+	+		+				
3	T2		333	□		+	1-5	1-9	+	+		+				
3	T2		334	□		+	1-9	2-1	+	+		+				
3	T2		335	□		+	0-9	2-1				+				
9	T7		936	□			1-7	13-0	1-7							
4	T7		437	□			0-8	5-10								
4	T0		438	□			2-2	1-8	2-2							
4	T7		439	□			1-8	2-2								
4	T7		440	□			0-8	2-0								
9	T7		941	□			1-6	5-0								
9	T7		942	□			1-6	6-8								
9	T7		943	□			7-0	7-0								
9	T7		944	□			0-10	11-3								
3	T2		345	□		+	1-1	1-9	+	+		+				
9	T7		946	□			1-7	20-4								
9	T7		947	□			0-10	15-6								
9	T7		948	□			0-10	14-3								
9	T7		949	□			0-10	14-11								
5	T7		550	□			1-0	2-8								
3	T2		351	□		+	1-9	1-9	+	+		+				

LEGEND
 O.F. - OUTSIDE FACE
 I.F. - INSIDE FACE
 E.F. - EACH FACE
 HORIZ. - HORIZONTAL
 VERT. - VERTICAL
 DWLS - DOWELS
 FTG. - FOOTING
 ELEV. - ELEVATION
 E.W. - EACH WAY
 T.O.F. - TOP OF FOOTING
 B.O.F. - BOTTOM OF FOOTING
 T.O.W. - TOP OF WALL
 B.O.W. - BOTTOM OF WALL
 GRD. BM. - GRADE BEAM
 MK. - MARK
 MAS. - MASONRY
 DIAG. - DIAGONAL
 COL. - COLUMN
 PROJ. - PROJECTION
 T & B - TOP & BOTTOM
 N.F. - NEAR FACE
 F.F. - FAR FACE
 % - ON CENTER
 @ - AT EACH

NO. DATE ISSUED FOR

DALCO INDUSTRIES, INC.
 An Employee Owned Company
 AREA CODE 303 371-3950 3730 SALEM ST. DENVER, COLO. 80239

JOB **HDTWWTP**

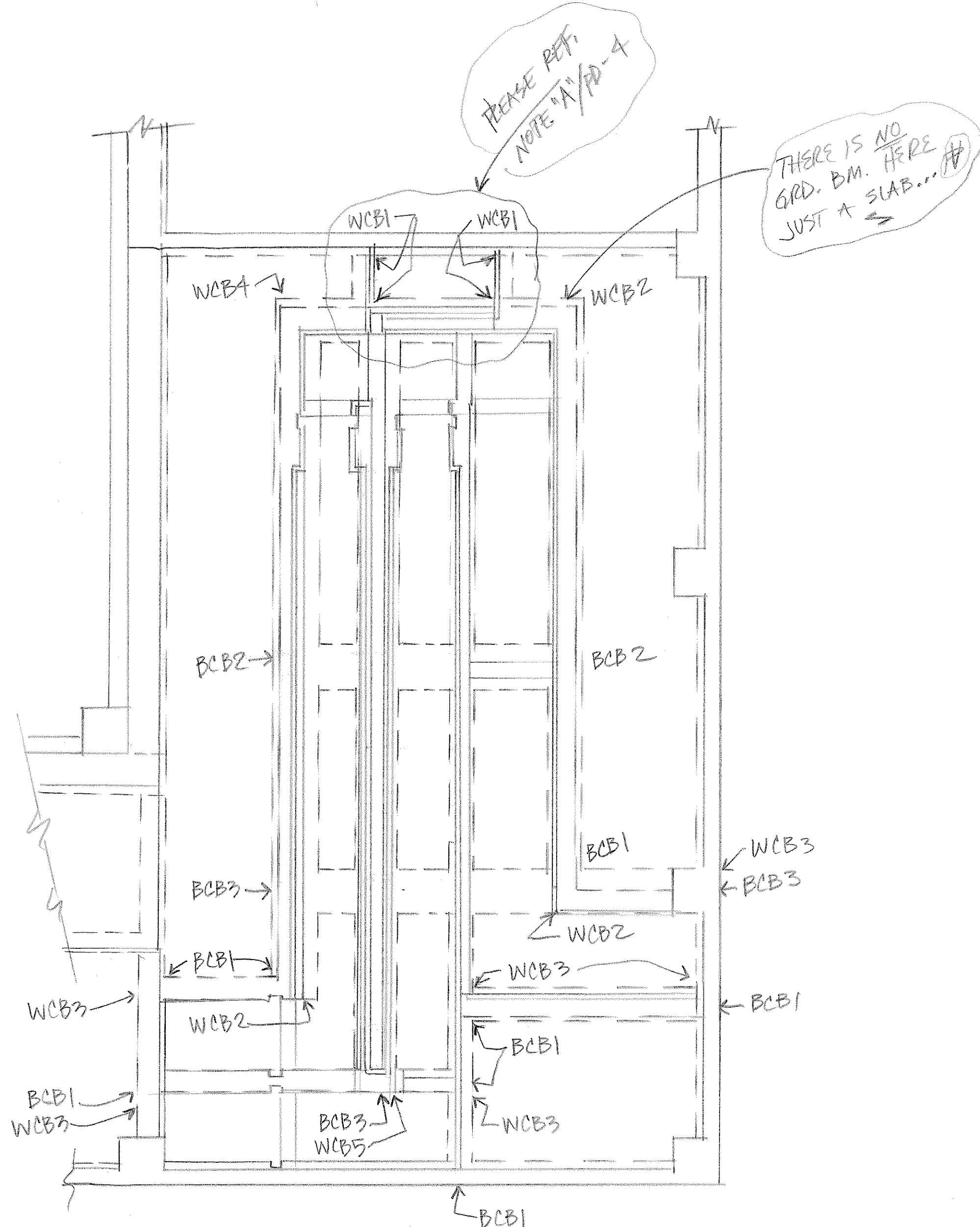
LOCATION **FOUNTAIN, Co.**

DESCRIPTION **FOUND. SEC. PUMPING & DISINFECTION**

CONTRACTOR **WEAVER GENERAL**

ARCHITECT **GMS, Inc.**

DRAWN: **D. TARIN** CHECKED: **D. TARIN** DATE: **10/18/11** REVISIONS: **10082** JOB NO. **PD-5** DRAWING NO.



PARTIAL SLAB PLAN

GRADE B.M. CORNER BARS

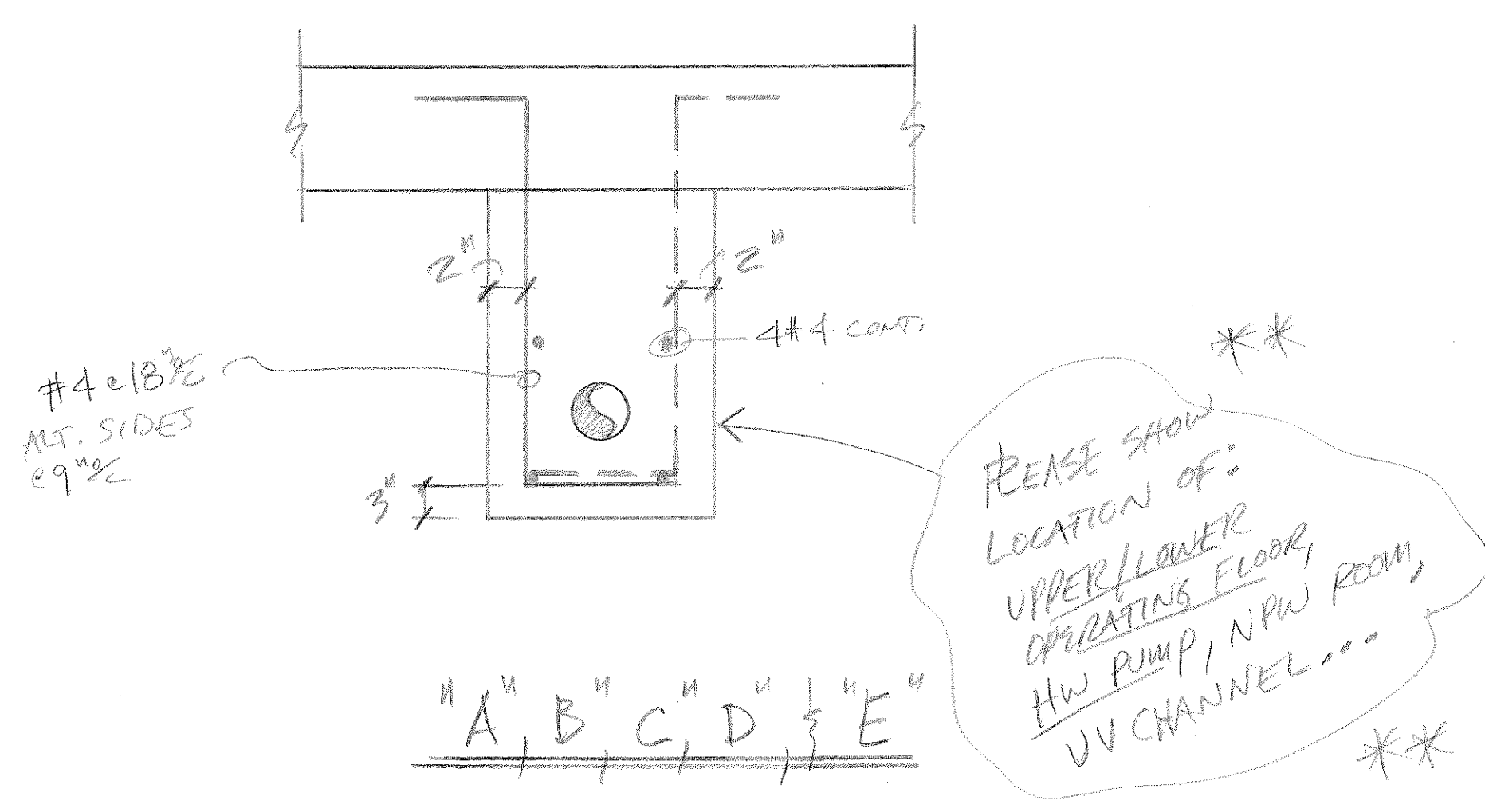
NK.	QTY.	BAR(S) (MATCH HORZ.) (#)
BCB1	3	6 (959) 3T/B
BCB2	2	8 (959) 4T/B
BCB3	3	10 (959) 5T/B

WALL CORNER BARS

NK.	QTY.	BAR(S) (LOC.)
WCB1	4	4 (666) 2T/B 10 (368) 5EF
WCB2	3	2 (665) 1T/B (OF) 4 (666) 2EW (IF) 6 (461) OF 12 (462) 2EW (IF)
WCB3	6	2 (665) 4 (666) 8 (461) do. do.

WALL CORNER BARS (CONT.)

NK.	QTY.	BAR(S) (LOC.)
WCB4	ONE	2 (665) 1T/B (OF) 4 (666) 2EW (IF) 5 (563) OF 10 (564) 2EW (IF)
WCB5	ONE	4 (666) 2T/B 2 (467) 1EF 10 (564) 5EF



QTY	SIZE	TYPE	LENGTH FT. - IN.	MARK	SKETCH	A	B	C	D	E	F/R	G	H	K	J	O
3	T2		352		+	1-4	1-4									
11	17		1153		Γ	6-9	6-9									
11	17		1154		Γ	5-0	6-9									
5	17		555		Γ	4-0	4-0									
8	17		856		Γ	3-6	5-3									
5	17		557		Γ	2-9	2-9									
4	17		458		Γ	2-3	2-3									
9	17		959		Γ	5-8	5-8									
9	17		960		Γ	4-0	5-8									
4	17		461		Γ	2-9	2-9									
4	17		462		Γ	1-9	2-9									
5	17		563		Γ	3-3	3-3									
5	17		564		Γ	2-3	3-3									
6	17		665		Γ	4-6	4-6									
6	17		666		Γ	2-9	4-6									
4	17		467		Γ	1-9	3-6									
3	17		368		Γ	1-4	2-6									
5	S4		569		Γ	2-0	0-5	1-6	0-5			2-0				
3	T2		370		+	0-5	0-5									
5	17		571		Γ	0-10	2-6									
10	20		1072		Γ	5-1	2-6	5-1								
10	3		1073		Γ	5-1		5-1						2-6	2-6	
8	20		874		Γ	4-0	2-6	4-0								
8	3		875		Γ	4-0		4-0						2-6	2-6	
9	20		976		Γ	4-7	5-6	4-7								
9	3		977		Γ	4-7		4-7						5-6	5-6	
9	20		978		Γ	4-7	7-3	4-7								
9	3		979		Γ	4-7		4-7						7-3	7-3	

LEGEND

- O.F. - OUTSIDE FACE
- I.F. - INSIDE FACE
- E.F. - EACH FACE
- HORIZ. - HORIZONTAL
- VERT. - VERTICAL
- DWLS. - DOWELS
- FTG. - FOOTING
- ELEV. - ELEVATION
- E.W. - EACH WAY
- T.O.F. - TOP OF FOOTING
- B.O.F. - BOTTOM OF FOOTING
- T.O.W. - TOP OF WALL
- B.O.W. - BOTTOM OF WALL
- GRD. B.M. - GRADE BEAM
- MK. - MARK
- MAS. - MASONRY
- DIAG. - DIAGONAL
- COL. - COLUMN
- PROJ. - PROJECTION
- T & B - TOP & BOTTOM
- N.F. - NEAR FACE
- F.F. - FAR FACE
- % - ON CENTER
- @ - AT EACH

NO. DATE ISSUED FOR

DALCO INDUSTRIES, INC.
An Employee Owned Company

AREA CODE 303 371-3950 3730 SALEM ST. DENVER, COLO. 80239

JOB **HDTWNTP**

LOCATION **FOUNTAIN, CO.**

DESCRIPTION **PARTIAL FOUND. PLAN**

CONTRACTOR **WEAVER GEN.**

ARCHITECT **GMS, INC.**

DRAWN: D.TARVIN CHECKED: DATE: 10/18/11 REVISIONS: JOB NO. 10082 DRAWING NO. PD-6