



WEAVER CONSTRUCTION MANAGEMENT, INC.
 3679 S. Huron St., Suite 404
 Englewood, CO 80110
 Phone: (303) 789-4111 FAX: (303) 789-4310

SUBMITTAL TRANSMITTAL

September 7, 2011
WGC Submittal No: 05500-002.A

PROJECT: **Harold Thompson Regional WRF**
 Birdsell Rd.
 Fountain, CO 80817
 Job No. 2908

ENGINEER: **GMS, Inc.**
 611 No. Weber St., #300
 Colorado Springs, CO 80903
 719-475-2935 Roger Sams

OWNER: **Lower Fountain Metropolitan
 Sewage Disposal District**
 901 S. Santa Fe Ave.
 Fountain, CO 80817
 719-382-5303 James Heckman

CONTRACTOR: **American Fabricators, Inc**
 10290 E. 106th Ave.
 Brighton, Co 80601
 303-296-6223 Chuck Allen
 amerfab@msn.com

SUBJECT: Resubmittal Shop Drawing for Stairs - (SD-01 through SD-24)

SPEC SECTION: 05500 - Metal Fabrications

PREVIOUS SUBMISSION DATES: 7/28/11

DEVIATIONS FROM SPEC: ___ YES X NO

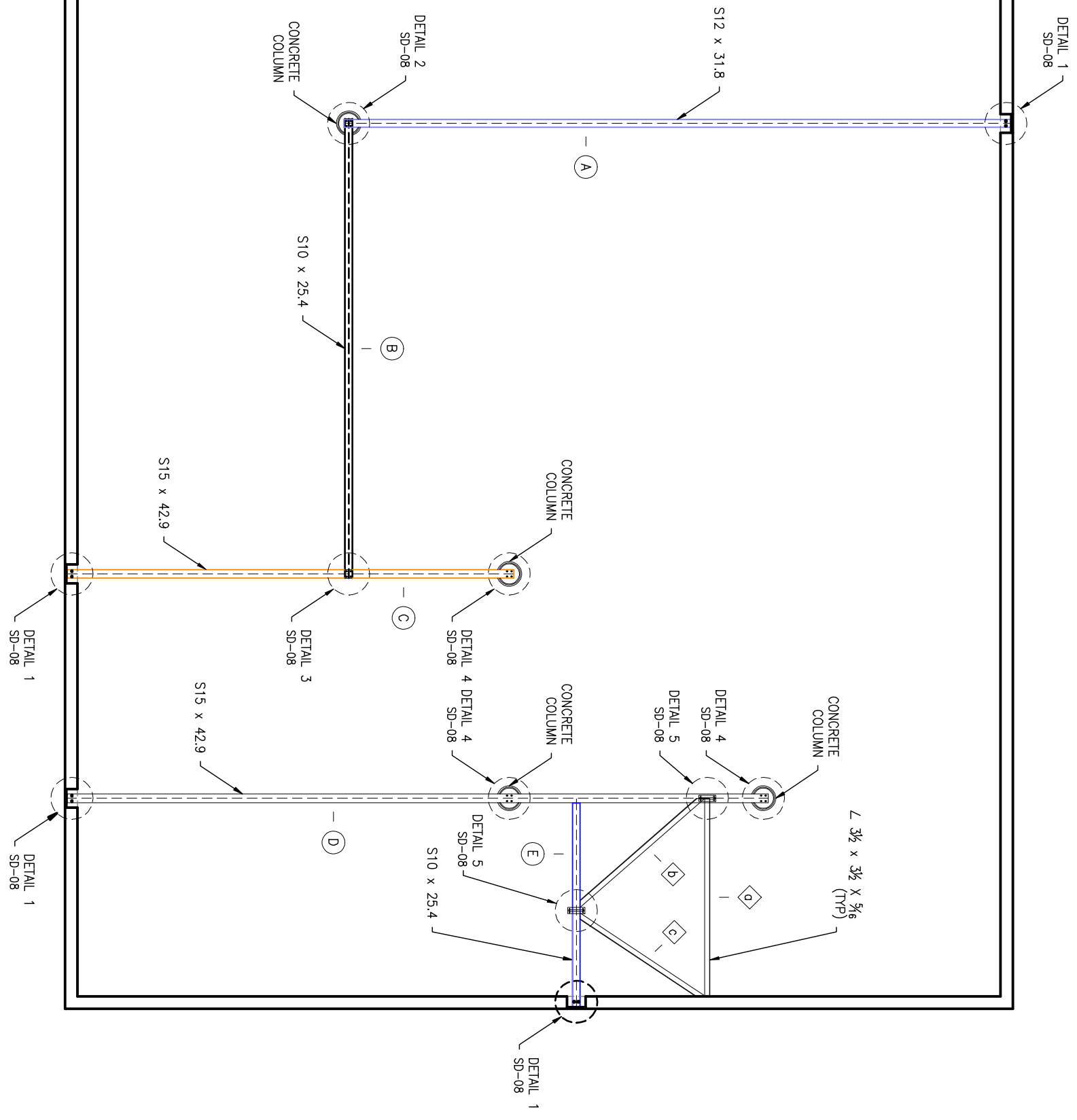
CONTRACTOR'S STAMP: This submittal has been reviewed by Weaver General Construction and approved with respect to the means, methods, techniques, & safety precautions & programs incidental thereto. Weaver General Construction also warrants that this submittal complies with contracted documents and comprises on deviations thereto:

<p>Contractor's Stamp:</p> <p>Date: 9/7/11 Reviewed by: H.C. Myers (X) Reviewed Without Comments () Reviewed With Comments</p> <p>ENGINEER'S COMMENTS: _____</p>	<p>Engineer's Stamp:</p>
---	---------------------------------

Attached are the re-submittal drawings for the Harold Thompson project.

- SD-01 - No change
- SD-02 - Added crane stops
- SD-03 - Added crane stops
- SD-04 - Added crane stops - Revised S15x42.9 from S10x25.4
- SD-05 - Added weld connection to cross beam
- SD-06 - Revised S10x25.4 from S15x31.8
- SD-07 - No change
- SD-08 - No change
- SD-09 - Added 1/4" plate to bottom of beam - Added #5 rod to top of beam - Added (2X) 3/4" x 1 1/4" slot to end of beam - Added missed beam 6'-0" - Changed all beam sizes
- SD-10 - No change
- SD-11 - No change
- SD-12 - Added weld symbols to include both sides - Change grating to correct size - Removed 6" length for landing leg
- SD-13 - Increased text size of FIELD MEASURE IS REQUIRED PRIOR TO FABRICATION
- SD-14 - Moved bottom flange to back side
- SD-15 - Added text regarding FIELD MEASURE IS REQUIRED PRIOR TO FABRICATION
- SD-16 - Changed size of end section - Changed size of grating "A" - Changed grating to correct size
- SD-17 - Changed grating to correct size
- SD-18 - Changed grating to correct size
- SD-19 - Changed grating to correct size
- SD-20 - Changed grating to correct size
- SD-21 - Decreased size of overall length - Changed size of grating "N"
- SD-22 - Changed grating to correct size
- SD-23 - Changed grating to correct size
- SD-24 - No change

1 Beam plan



CONTRACTOR:
Weaver General Construction Co.
 3679 S. Huron St. Suite 404
 Englewood, CO 80110
 Ph: (303)769-4111 / Fx: (303)769-4310

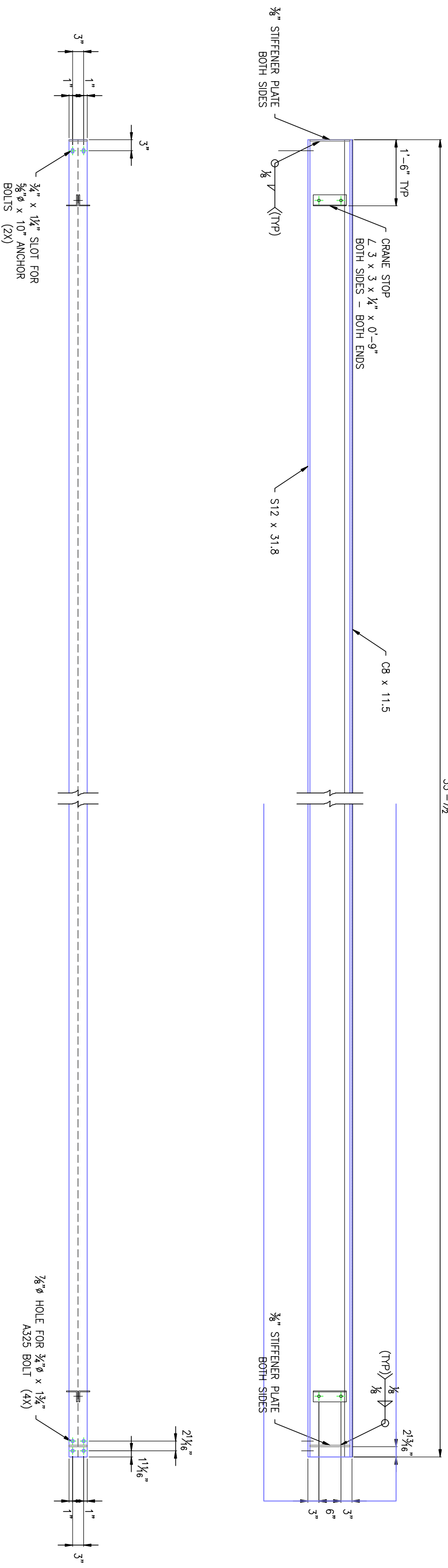
FABRICATOR:
American Fabricators
 10200 E. 100th Ave.
 Brighton, Colorado 80001
 Ph: (303)228-6223 / Fx: (303)228-6223

PROJECT: **Harold D Thompson WRF**
 TITLE: **Beam Plan**

Revision:	DWG. BY:	CHK. BY:	DATE:
1. -	CCA	EDO	JUL 29 2011
2. -			
3. -			
4. -			
5. -			

SHEET NUMBER:
SD - 01

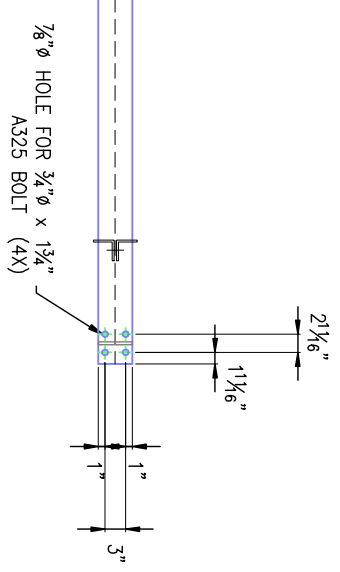
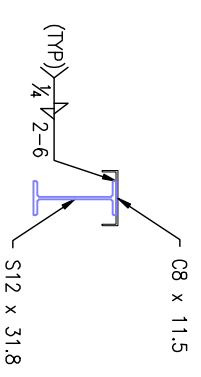
35' - 1 1/2"



(A) - S112 x 31.8 CRANE BEAM

Notes:

1. S112 x 31.8 conforms to ASTM A572 & A992 Gr. 50 steel.
2. C8 x 11.5 conforms to ASTM A36 steel.
3. 3/4" ϕ x 1 3/4" bolts conform to ASTM A325.
4. 3/4" ϕ x 10" anchor bolts conform to ASTM F1554 Gr. 36.
5. Shop primed with Tremec Series 37H-77 or equivalent.
6. Construction drawing HW-5.



1 Beam -A- Elevation

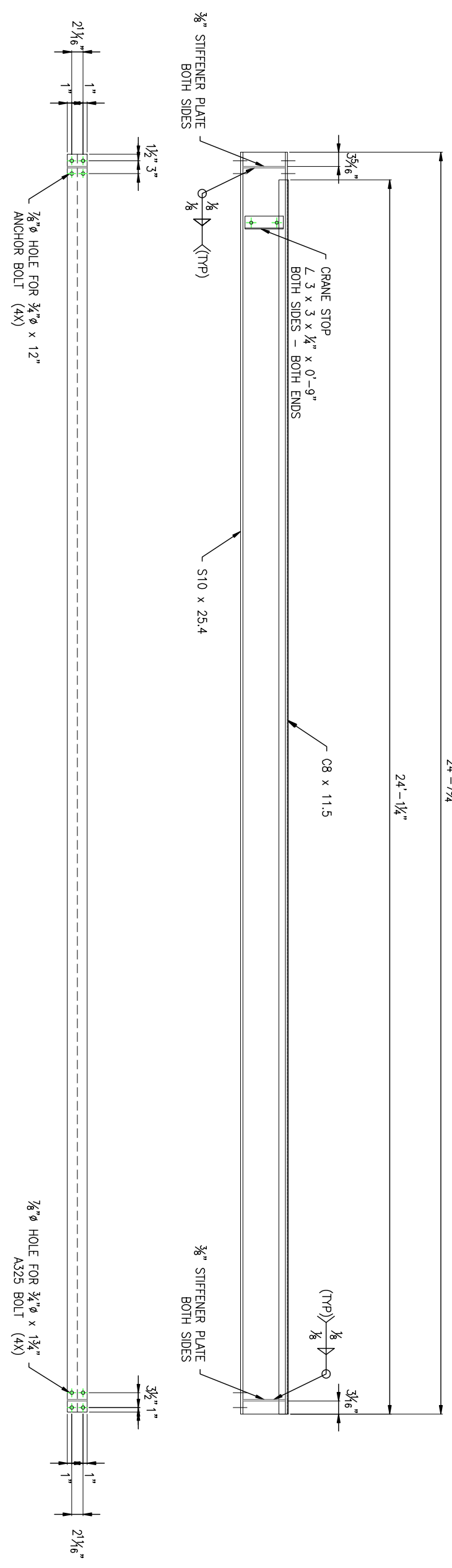
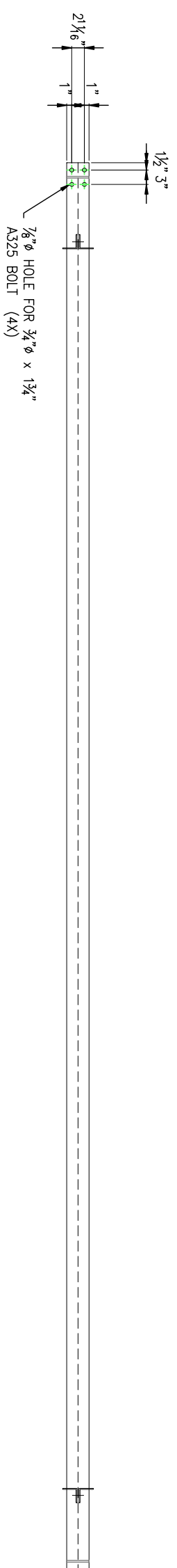
CONTRACTOR:
Weaver General Construction Co.
 3679 S. Huron St. Suite 404
 Englewood, CO 80110
 Ph: (303)769-4111 / Fx: (303)769-4310

FABRICATOR:
American Fabricators
 10220 E. 100th Ave.
 Brighton, Colorado 80001
 Ph: (303)226-6223 / Fx: (303)226-6223

PROJECT: **Harold D Thompson WRF**
 TITLE: **Beam -A-**

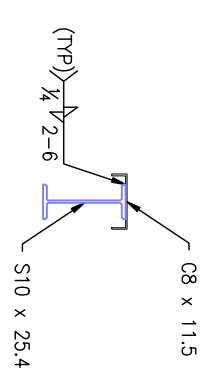
Revision:	DWG BY: CCA	CHK BY: EDO
1. Added crane stops (4) both sides - both ends 08-31-11		
2. -		
3. -		
4. -		
5. -		

DATE: **JUL 29 2011**
 SHEET NUMBER: **SD - 02**



ⓑ - S10 x 25.4 CRANE BEAM

- Notes:
1. S10 x 25.4 conforms to ASTM A572 & A992 Gr. 50 steel.
 2. C8 x 11.5 conforms to ASTM A36 steel.
 3. 3/4" ϕ x 1 3/4" bolts conform to ASTM A325.
 4. 3/4" ϕ x 12" anchor bolts conform to ASTM F1554 Gr. 36.
 5. Shop primed with Thamec Series 37H-77 or equivalent.
 6. Construction drawing HW-5.



1 Beam-B- Elevation

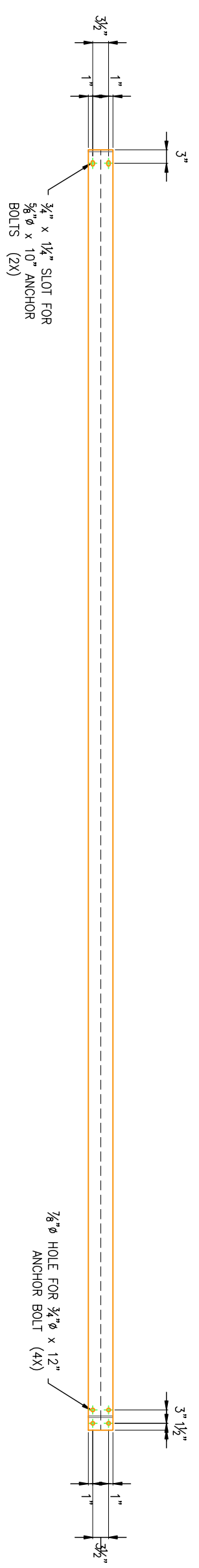
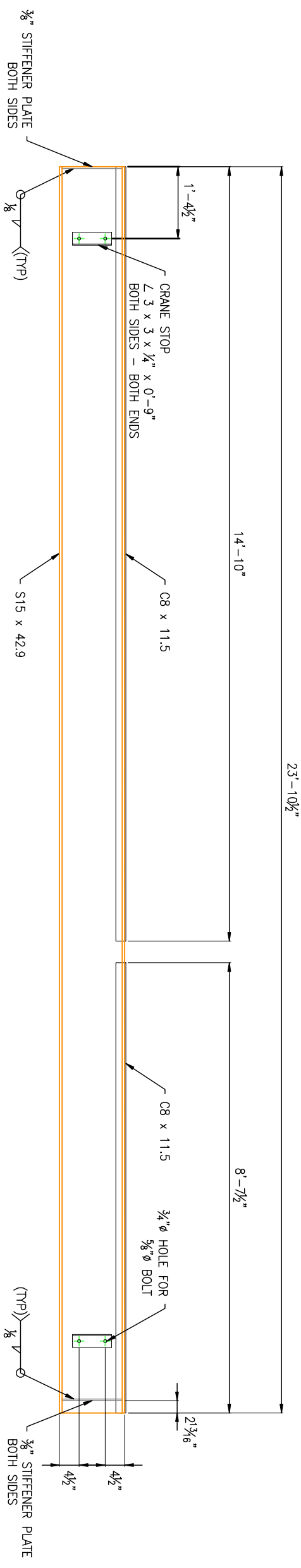
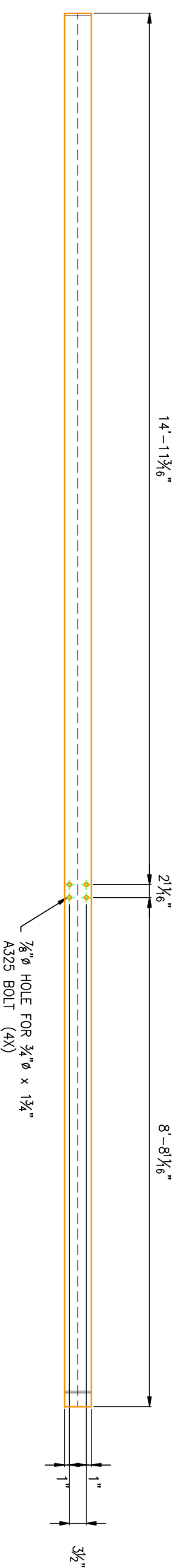
CONTRACTOR:
Weaver General Construction Co.
 3679 S. Huron St. Suite 404
 Englewood, CO 80110
 Ph: (303)769-4111 / Fx: (303)769-4310

FABRICATOR:
American Fabricators
 10290 E. 106th Ave.
 Brighton, Colorado 80601
 Ph: (303)296-6223 / Fx: (303)296-6283

PROJECT: **Harold D Thompson WRF**
 TITLE: **Beam -B-**

Revision:	DWG BY:	CHK BY:
1. -	CCA	EDO
2. -		
3. -		
4. -		
5. -		

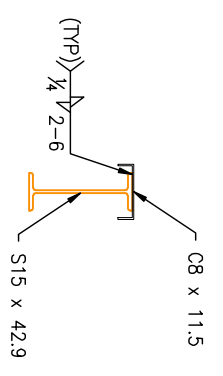
DATE: **JUL 29 2011**
 SHEET NUMBER: **SD - 03**



Ⓢ - S15 x 42.9 CRANE BEAM

Notes:

1. S15 x 42.9 conforms to ASTM A572 & A992 Gr. 50 steel.
2. C8 x 11.5 conforms to ASTM A36 steel.
3. 3/4" ϕ x 13/4" bolts conform to ASTM A325.
4. 3/4" ϕ x 12" anchor bolts conform to ASTM F1554 Gr. 36.
5. 3/4" ϕ x 10" anchor bolts conform to ASTM F1554 Gr. 36.
6. Shop primed with Tremec Series 37H-77 or equivalent.
7. Construction drawing HW-5.



1 Beam-C Elevation

CONTRACTOR:
Weaver General Construction Co.
 3679 S. Huron St. Suite 404
 Englewood, CO 80110
 Ph: (303)769-4111 / Fx: (303)769-4310

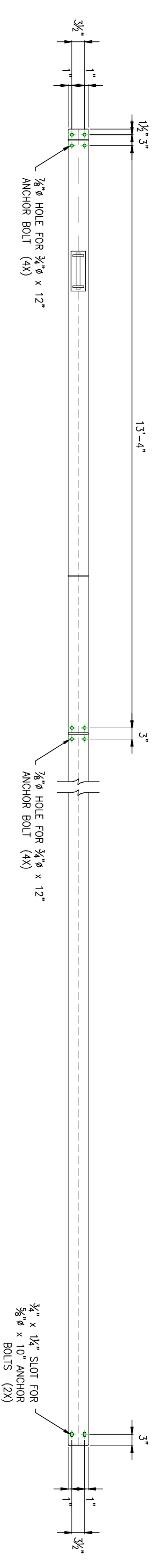
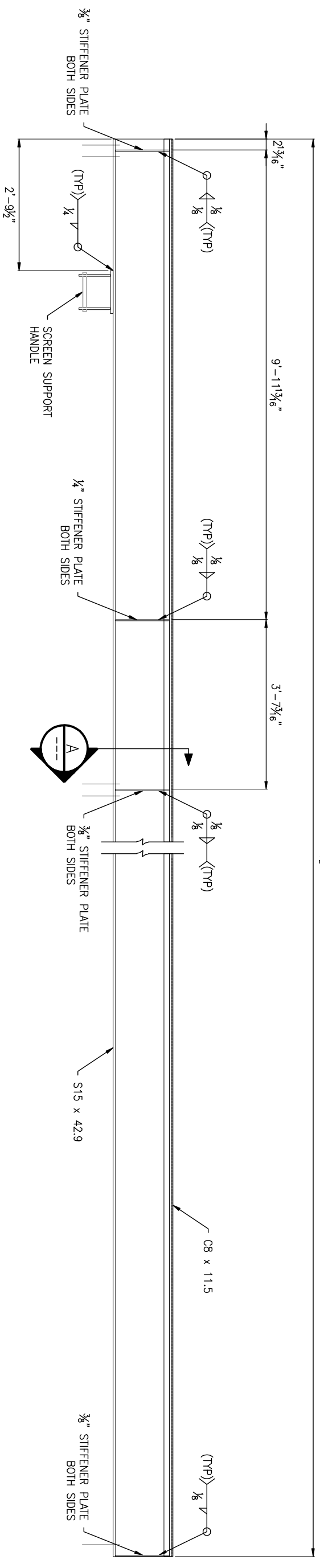
FABRICATOR:
American Fabricators
 10200 E. 100th Ave.
 Brighton, Colorado 80001
 Ph: (303)228-6228 / Fx: (303)228-6228

PROJECT: **Harold D Thompson WRF**
 TITLE: **Beam-C-**

Revision:	DWG. BY:	CHK. BY:
1. -	CCA	EDO
2. -		
3. -		
4. -		
5. -		

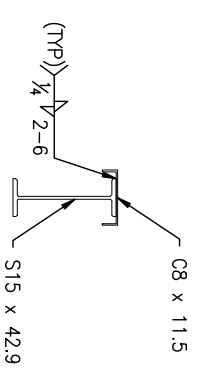
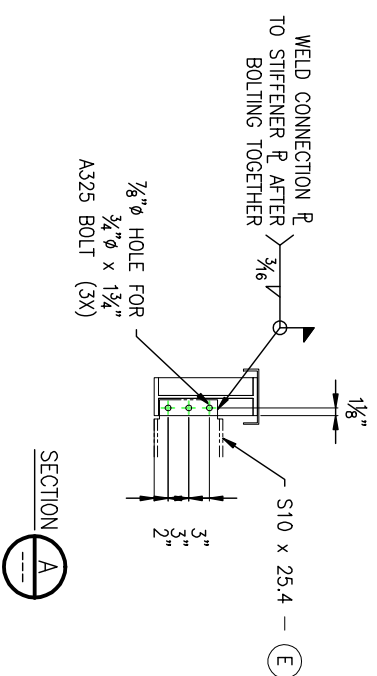
DATE: **JUL 29 2011**
 SHEET NUMBER: **SD - 04**

37'-5 1/2"



ⓓ - S15 x 42.9 CRANE BEAM

- Notes:**
1. S15 x 42.9 conforms to ASTM A572 & A992 Gr. 50 steel.
 2. C8 x 11.5 conforms to ASTM A36 steel.
 3. 3/4" x 10" anchor bolts conform to ASTM F1554 Gr. 36.
 4. 3/4" x 1 3/4" bolts conform to ASTM A325.
 5. Shop primed with Tremec Series 37H-77 or equivalent.
 6. Construction drawing HW-5.



1 Beam-D- Elevation

CONTRACTOR:
Weaver General Construction Co.
 3679 S. Huron St. Suite 404
 Englewood, CO 80110
 Ph: (303)769-4111 / Fx: (303)769-4310

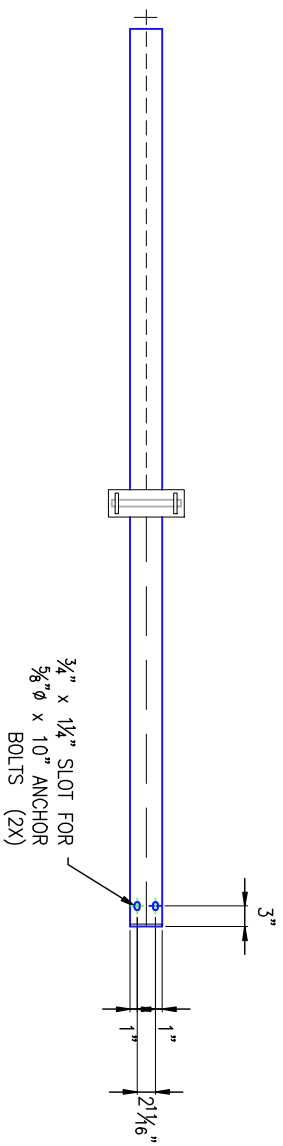
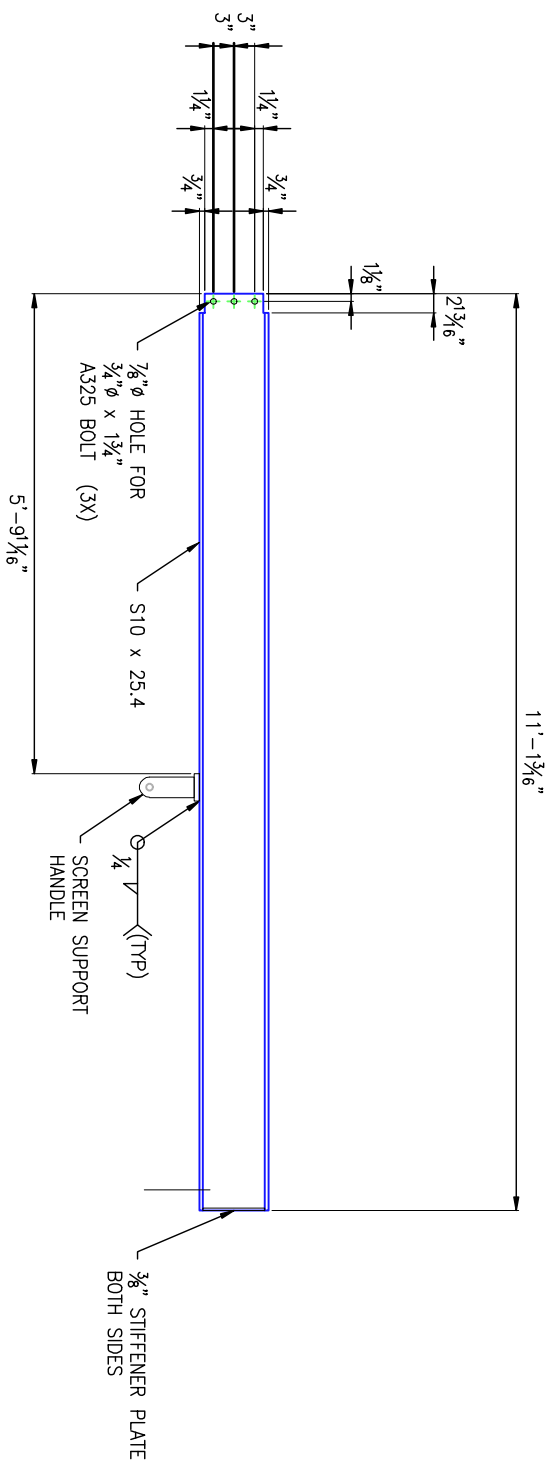
FABRICATOR:
American Fabricators
 10200 E. 100th Ave.
 Brighton, Colorado 80001
 Ph: (303)226-6226 / Fx: (303)226-6226

PROJECT:
Harold D Thompson WRF
TITLE:
 Beam -D-

Revision:

1.	-
2.	-
3.	-
4.	-
5.	-

DWG BY: CCA CHK BY: EDO
 DATE: JUL 29 2011
 SHEET NUMBER: SD - 05



ⓔ — S10 x 25.4 CRANE BEAM

Notes:

1. S10 x 25.4 conforms to ASTM A572 & A992 Gr. 50 steel.
2. $\frac{3}{4}$ " ϕ x $1\frac{3}{4}$ " bolts conform to ASTM A325.
3. $\frac{3}{4}$ " ϕ x 12" anchor bolts conform to ASTM F11554 Gr. 36.
4. Shop primed with Tremec Series 37H-77 or equivalent.
5. Construction drawing HW-5.

1 Beam -E- Elevation

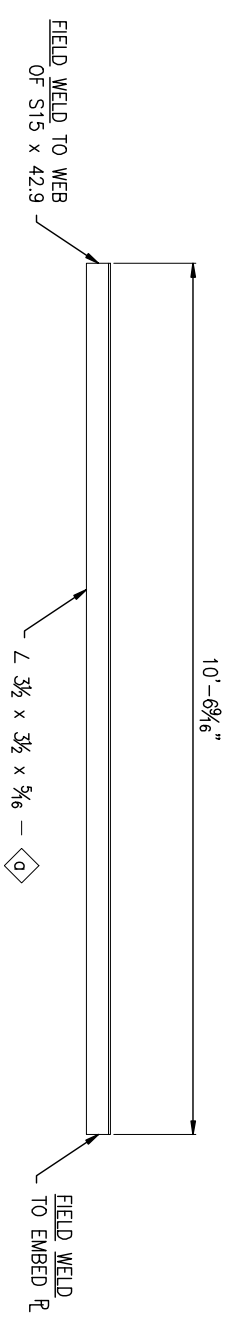
CONTRACTOR:
Weaver General Construction Co.
 3679 S. Huron St. Suite 404
 Englewood, CO 80110
 Ph: (303)769-4111 / Fx: (303)769-4310

FABRICATOR:
American Fabricators
 10220 E. 100th Ave.
 Brighton, Colorado 80001
 Ph: (303)228-6223 / Fx: (303)228-6223

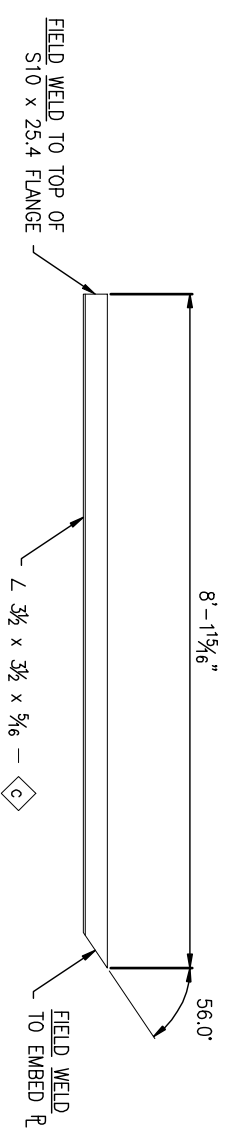
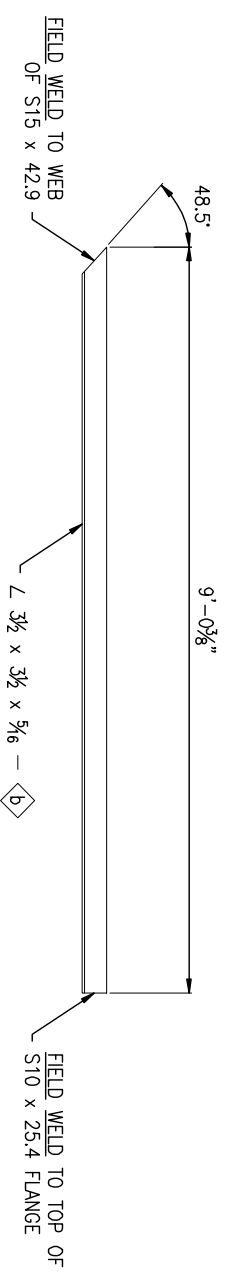
PROJECT: **Harold D Thompson WRF**
 TITLE: **Beam -E-**

Revision:	DWG. BY:	CHK. BY:
1. -	CCA	EDO
2. -		
3. -		
4. -		
5. -		

DATE: **JUL 29 2011**
 SHEET NUMBER: **SD - 06**



- Notes:
1. Angle conforms to ASTM A36 steel.
 2. Shop primed with Tremec Series 37H-77 or equivalent.
 3. Construction drawing HW-5.



ANGLE BRACES
PRIMED

1 Angle Braces

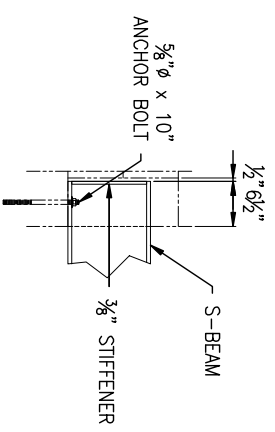
CONTRACTOR:
Weaver General Construction Co.
3679 S. Huron St. Suite 404
Englewood, CO 80110
Ph: (303)769-4111 / Fx: (303)769-4310

FABRICATOR:
American Fabricators
10220 E. 100th Ave.
Brighton, Colorado 80001
Ph: (303)228-6223 / Fx: (303)228-6223

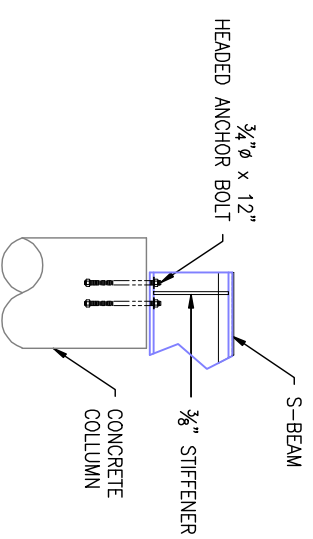
PROJECT: **Harold D Thompson WRF**
TITLE: **Angle Braces**

Revision:	DWG BY:	CHK BY:	DATE:
1. -	CCA	EDO	JUL 29 2011
2. -			
3. -			
4. -			
5. -			

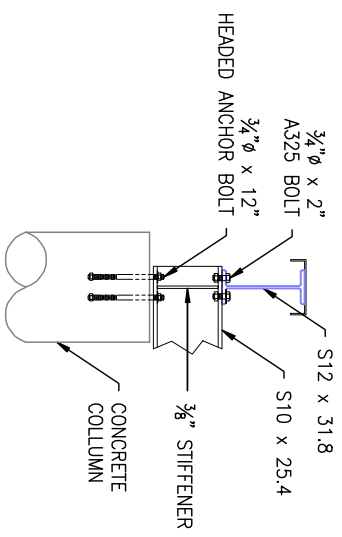
SHEET NUMBER: **SD - 07**



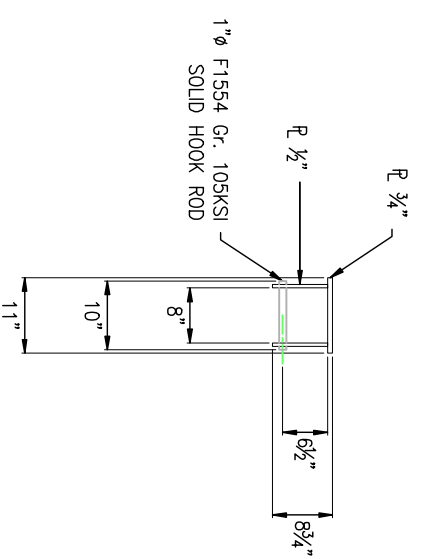
DETAIL 1



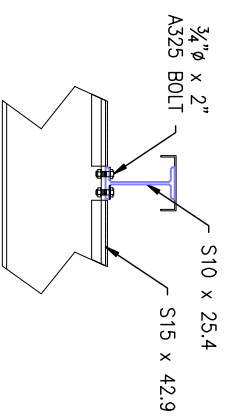
DETAIL 4



DETAIL 2



DETAIL 5
SCREEN SUPPORT HANDLE



DETAIL 3

- Notes:
1. S-Beams conform to ASTM A572 & A992 Gr. 50 steel.
 2. C8 x 11.5 conforms to ASTM A36 steel.
 3. Plate conforms to ASTM A36 steel.
 4. 3/4" x 1 1/4" bolts conform to ASTM A325.
 5. 3/4" x 12" anchor bolts conform to ASTM F1554 Gr. 36.
 6. 3/4" x 10" anchor bolts conform to ASTM F1554 Gr. 36.
 7. Shop primed with Tnemec Series 37H-77 or equivalent.

1 S-Beam Details

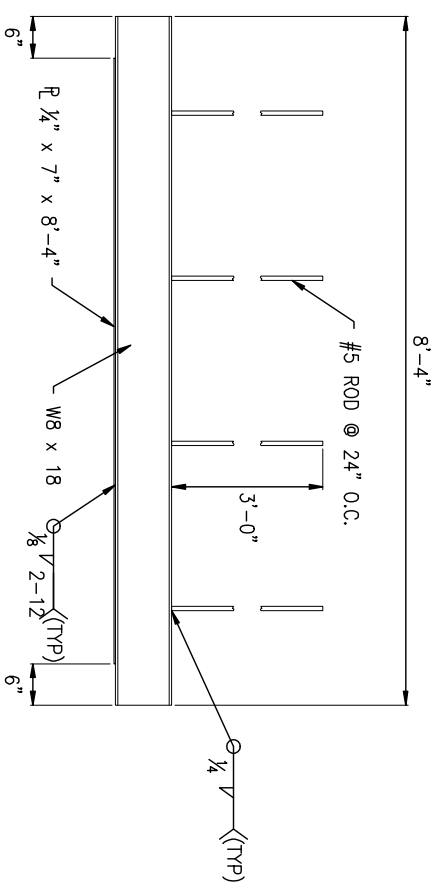
CONTRACTOR:
Weaver General Construction Co.
 3679 S. Huron St. Suite 404
 Englewood, CO 80110
 Ph: (303)769-4111 / Fx: (303)769-4310

FABRICATOR:
American Fabricators
 10290 E. 106th Ave.
 Brighton, Colorado 80601
 Ph: (303)296-6223 / Fx: (303)296-6283

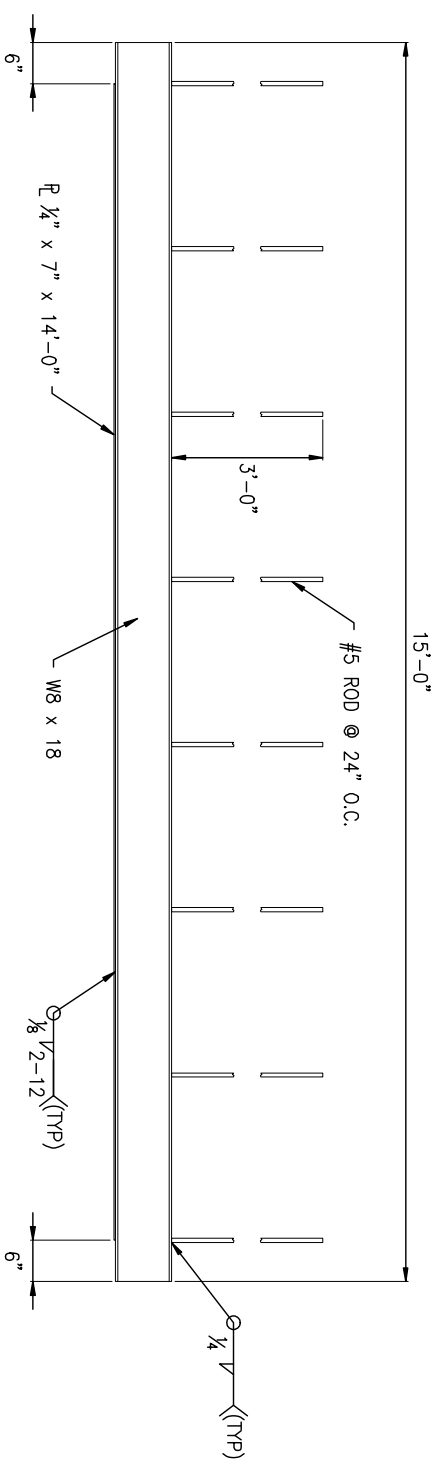
PROJECT: **Harold D Thompson WRF**
 TITLE: **S-Beam Details**

Revision:	DWG BY:	CHK BY:
1. -	CCA	EDO
2. -		
3. -		
4. -		
5. -		

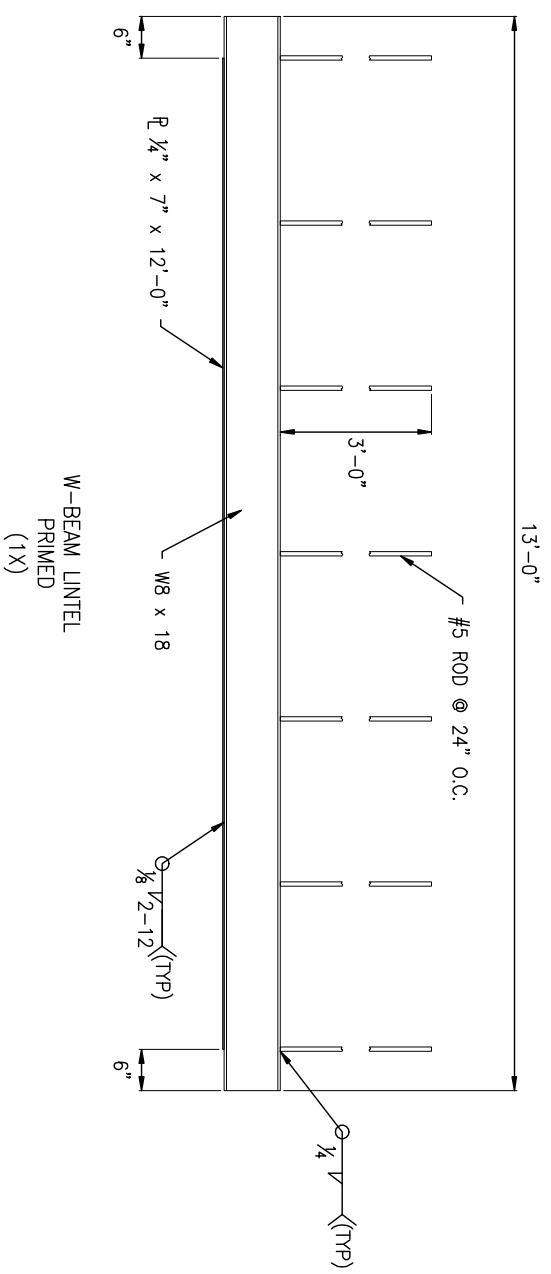
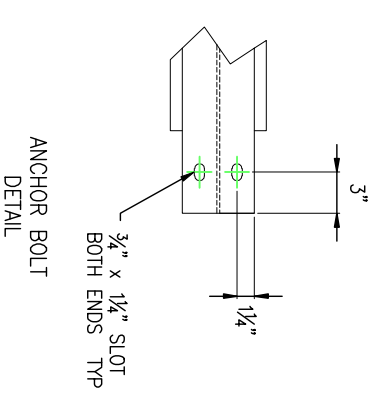
DATE: **JUL 29 2011**
 SHEET NUMBER: **SD - 08**



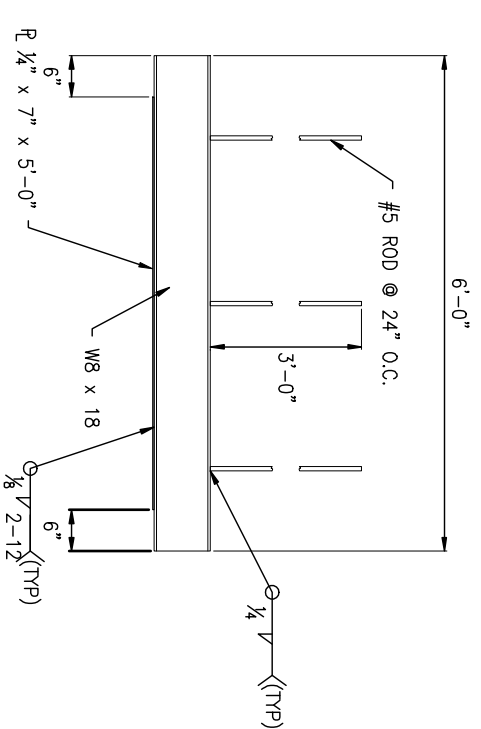
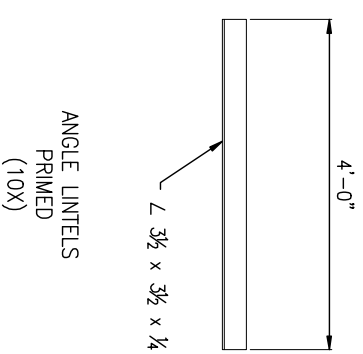
W-BEAM LINTEL
PRIMED
(1X)



W-BEAM LINTEL
PRIMED
(1X)



W-BEAM LINTEL
PRIMED
(1X)



W-BEAM LINTEL
PRIMED
(1X)

- Notes:
1. W8 x 18 conforms to ASTM A572 / A992 Gr. 50.
 2. Angle and plate conforms to ASTM A36 steel.
 3. Shop primed with Truemecc Series 37H-77 or equivalent.
 4. Construction drawing HW-11.

1 Lintel Elevation

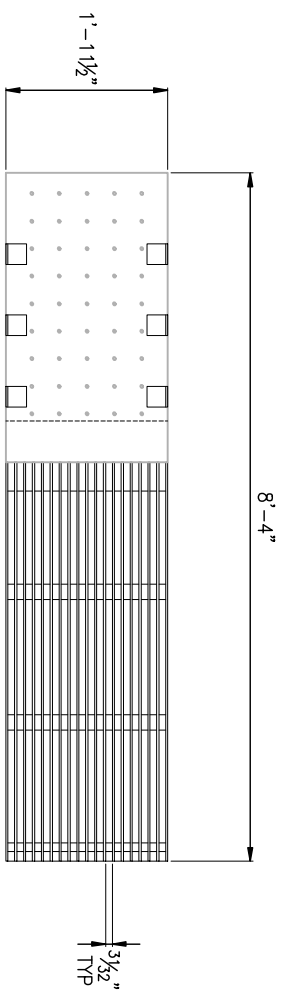
CONTRACTOR:
Weaver General Construction Co.
3679 S. Huron St. Suite 404
Englewood, CO 80110
Ph: (303)769-4111 / Fx: (303)769-4310

FABRICATOR:
American Fabricators
10200 E. 100th Ave.
Brighton, Colorado 80001
Ph: (303)226-6223 / Fx: (303)226-6223

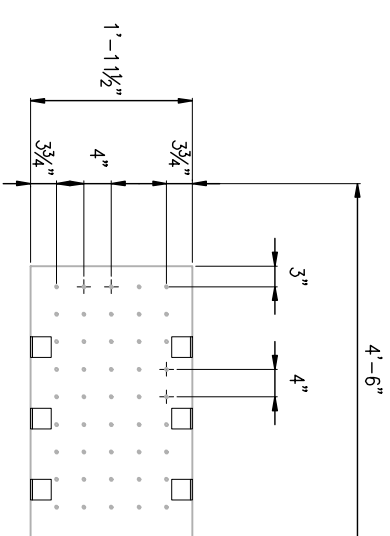
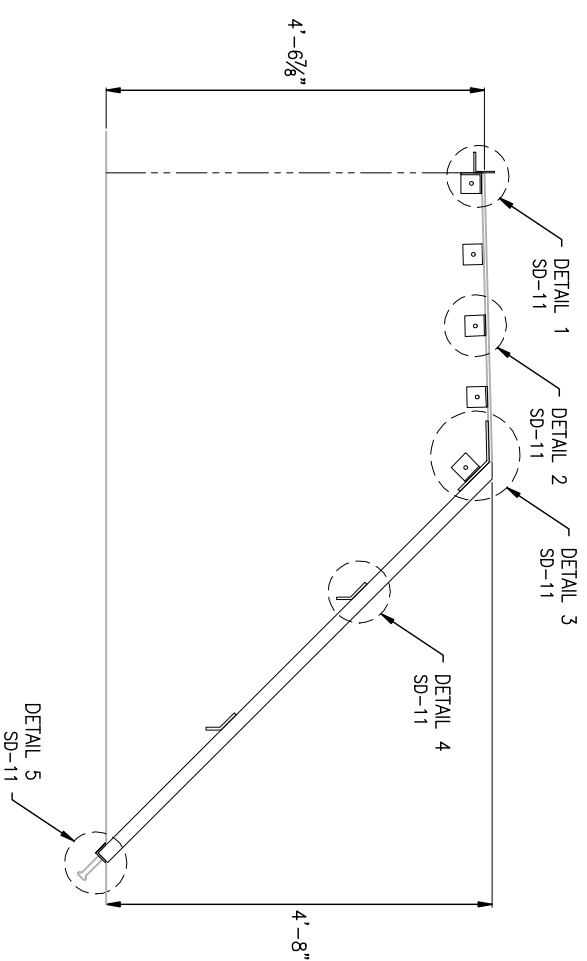
PROJECT: **Harold D Thompson WRF**
TITLE: **Lintels**

Revision:	DWG BY:	CHK BY:
1. -	CCA	EDO
2. -		
3. -		
4. -		
5. -		

DATE: **JUL 29 2011**
SHEET NUMBER: **SD - 09**

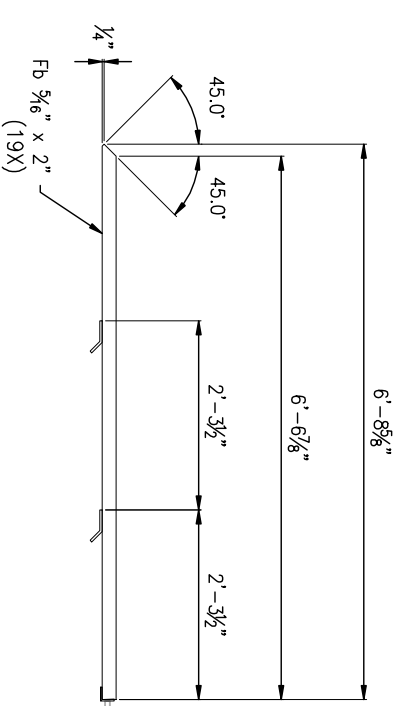
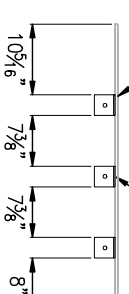


MANUAL BAR SCREEN
GALVANIZED



DRAIN R 3/8" w/ 1/2" Ø HOLES
4" O.C.

MOUNTING L 3 x 3 x 1/4"
REF: DETAIL 2 - SD-11



1 Unit Elevation

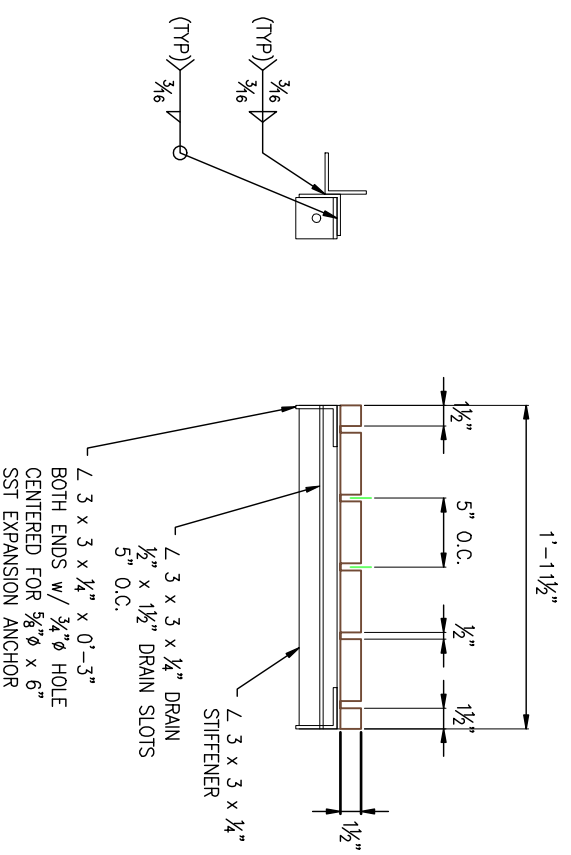
2 Unit Elevation

CONTRACTOR:
Weaver General Construction Co.
3679 S. Huron St. Suite 404
Englewood, CO 80110
Ph: (303)769-4111 / Fx: (303)769-4310

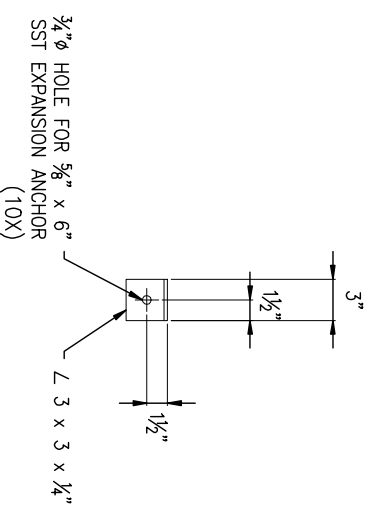
FABRICATOR:
American Fabricators
10200 E. 100th Ave.
Brighton, Colorado 80001
Ph: (303)228-6223 / Fx: (303)228-6223

PROJECT:	Harold D Thompson WRF	DWG BY: CCA	CHK BY: EDO
TITLE:	Lintels	DATE:	JUL 29 2011
Revision:	1. -	SHEET NUMBER:	SD - 10
	2. -		
	3. -		
	4. -		
	5. -		

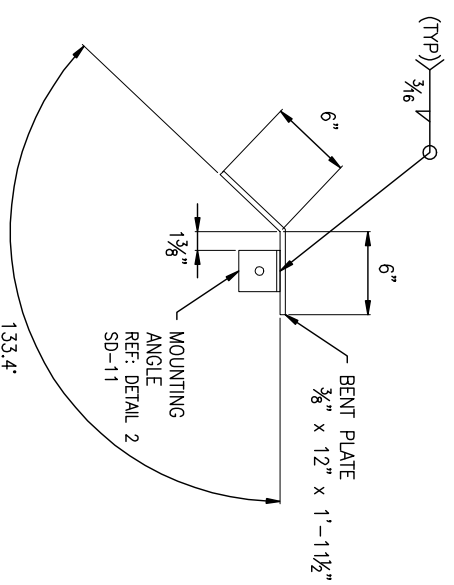
1 Lintel Elevation



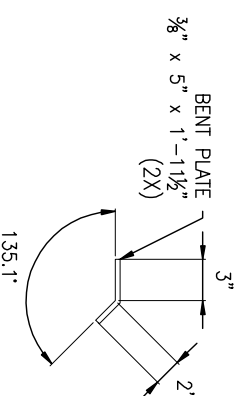
DETAIL 1



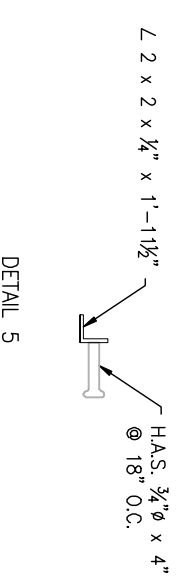
DETAIL 2



DETAIL 3



DETAIL 4



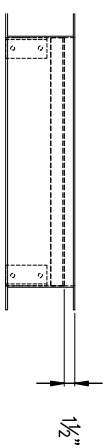
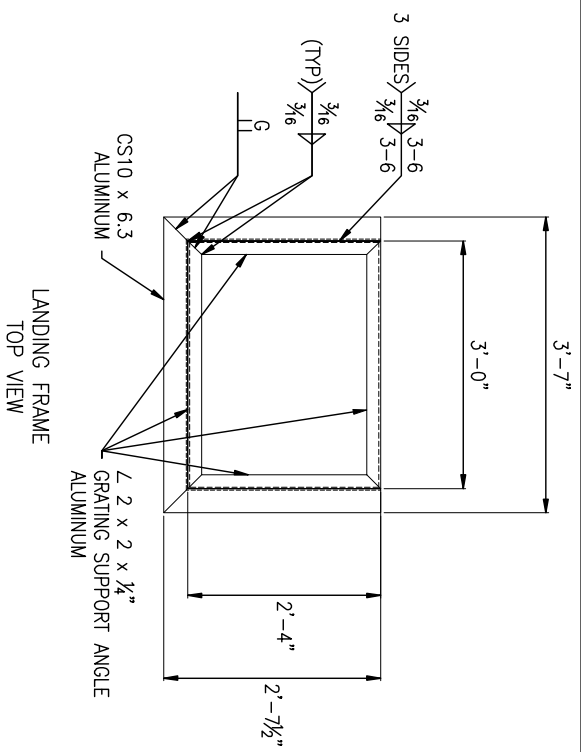
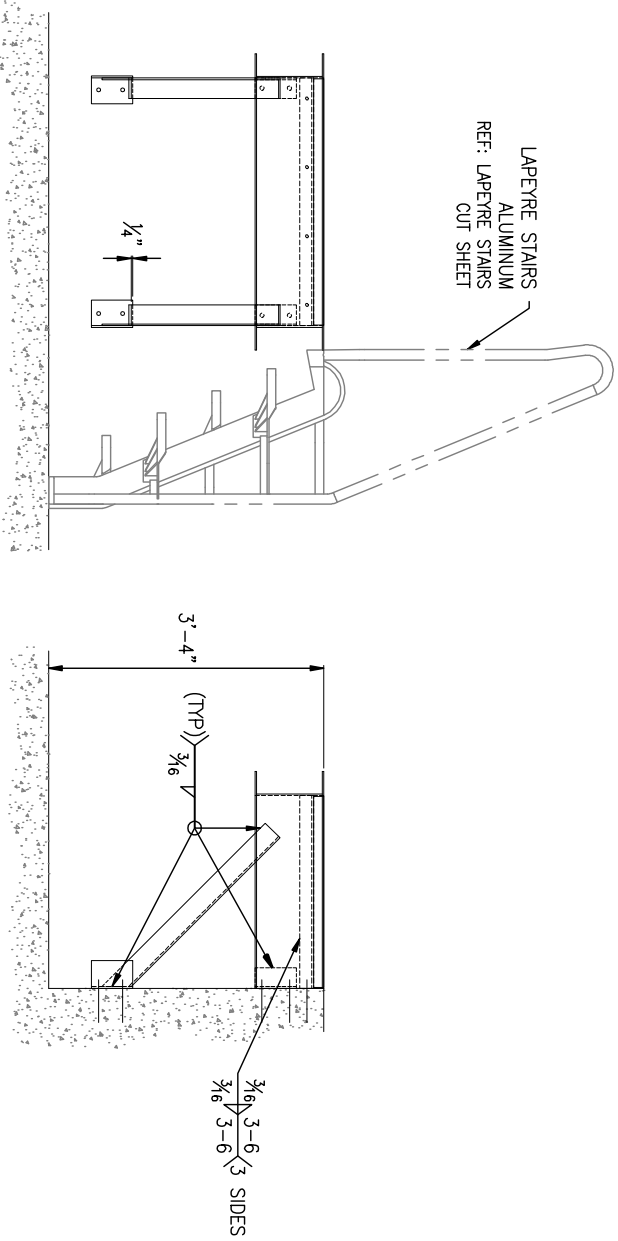
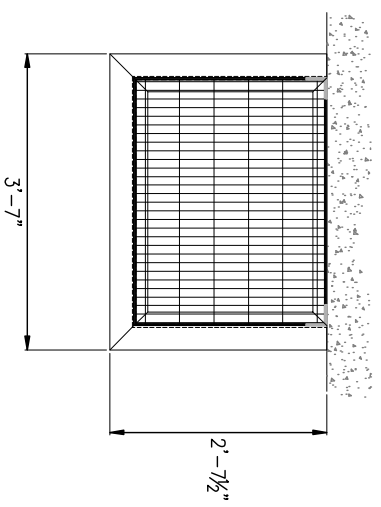
DETAIL 5

- Notes:**
1. Plate conforms to ASTM A36 steel.
 2. Angle conforms to ASTM A36 steel.
 3. Flat bar conforms to ASTM A36 steel.
 4. 3/8" Ø x 6" stainless steel anchors are 304.
 5. Manual bar screen to be galvanized in per AZZ Galvanizing specifications and requirements. Conforms to ASTM A123A and A123M-02.
 6. Construction drawing HW-18.

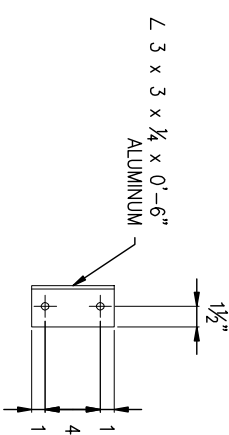
CONTRACTOR:
Weaver General Construction Co.
 3679 S. Huron St. Suite 404
 Englewood, CO 80110
 Ph: (303)769-4111 / Fx: (303)769-4310

FABRICATOR:
American Fabricators
 10200 E. 100th Ave.
 Brighton, Colorado 80001
 Ph: (303)228-6223 / Fx: (303)228-6223

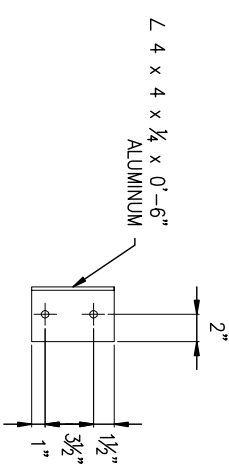
PROJECT:	Harold D Thompson WRF
TITLE:	Lintels
Revision:	1. - 2. - 3. - 4. - 5. -
DWG BY:	CCA
CHK BY:	EDO
DATE:	JUL 29 2011
SHEET NUMBER:	SD - 11



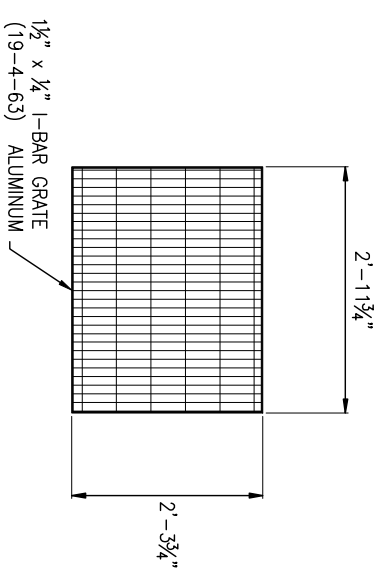
LANDING FRAME
FRONT VIEW



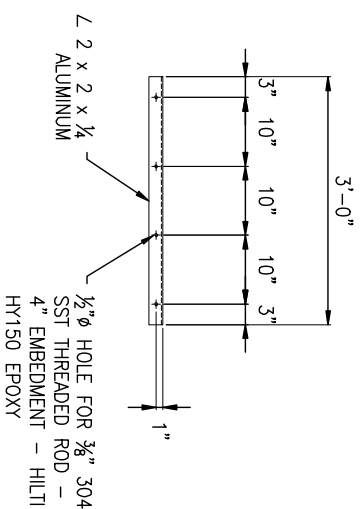
LANDING FRAME
WALL BRACKET
1 LEFT & 1 RIGHT



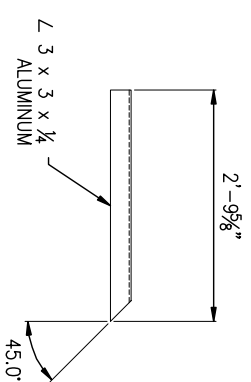
LANDING LEG
WALL BRACKET
1 LEFT & 1 RIGHT



LANDING GRATING



REAR WALL MOUNT
GRATING SUPPORT ANGLE



LANDING LEG
WALL BRACKET
1 LEFT & 1 RIGHT

- Notes:
1. Channel is 6061-T6 aluminum.
 2. Angles are 6061-T6 aluminum.
 3. Grating conforms to ASTM B-221 6063 ir 6061 aluminum.
 4. 5/8" ϕ x 6" stainless steel threaded rod is 304.
 5. Stairs or Lapeyre - SEE CUT SHEET
 6. Construction drawing HW-18.

1 Lapeyre Stairs and Landing

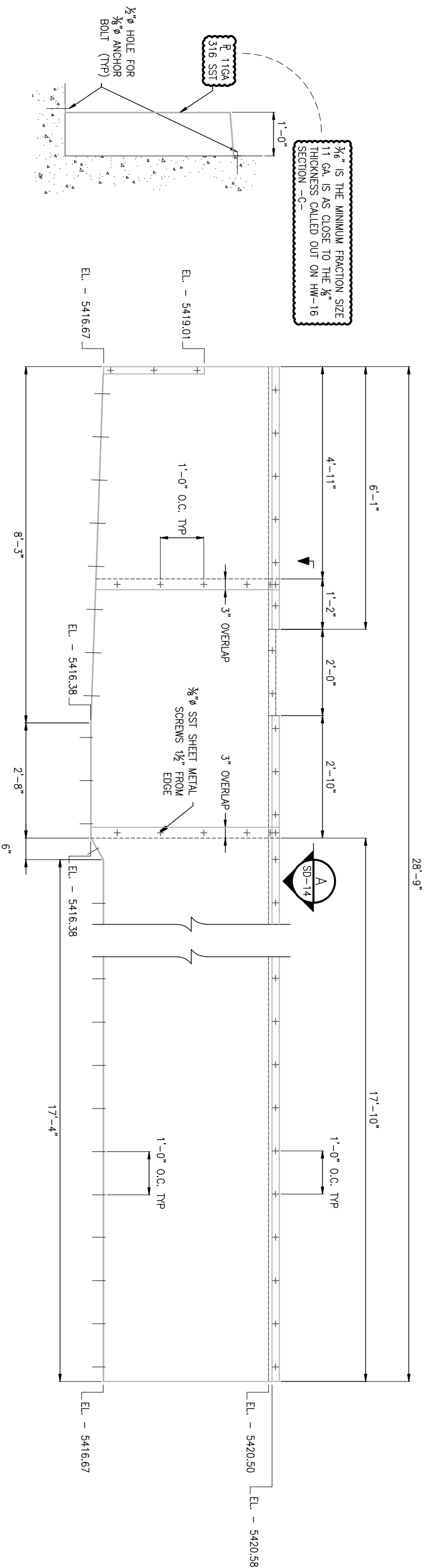
CONTRACTOR:
Weaver General Construction Co.
3679 S. Huron St. Suite 404
Englewood, CO 80110
Ph: (303)769-4111 / Fx: (303)769-4310

FABRICATOR:
American Fabricators
10200 E. 100th Ave.
Brighton, Colorado 80001
Ph: (303)228-6228 / Fx: (303)228-6228

PROJECT: **Harold D Thompson WRF**
TITLE: **Landing and Lapeyre Stairs**

Revision:	DWG BY:	CCA	CHK BY:	EDO
1. -				
2. -				
3. -				
4. -				
5. -				

DATE: **JUL 29 2011**
SHEET NUMBER: **SD - 12**



3/16" IS THE MINIMUM FRACTION SIZE
11 GA. IS AS CLOSE TO THE 3/8"
THICKNESS CALLED OUT ON HW-16
SECTION -C-

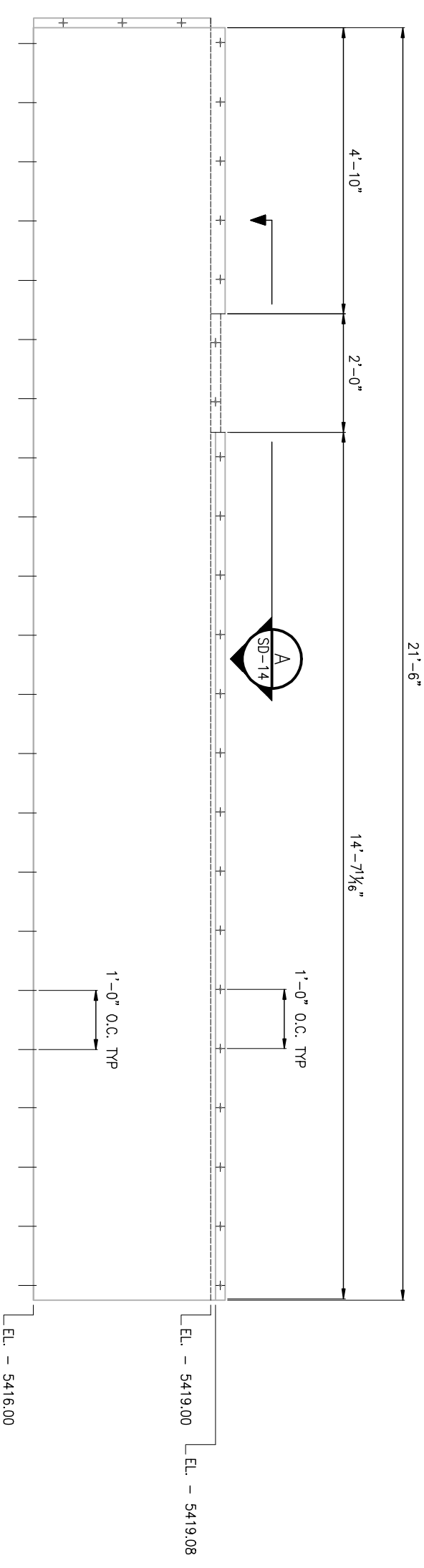
1/2" HOLE FOR
3/8" ANCHOR
BOLT (TYP)

R 11GA
316 SST

Notes:

1. FIELD VERIFICATION IS REQUIRED PRIOR TO FABRICATION.
2. R is 316 stainless steel.
3. Anchor bolts are 304 stainless steel.
4. Sheet metal screws are 304 stainless steel.
5. Construction drawing HW-14.

SCREEN CHANNEL
#2 BAFFLE



1 Lapeyre Stairs and Landing

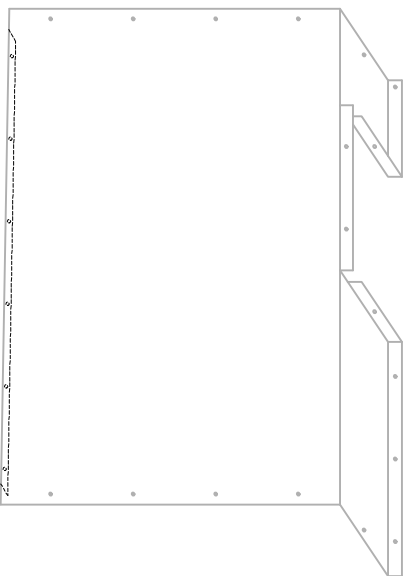
CONTRACTOR:
Weaver General Construction Co.
3679 S. Huron St. Suite 404
Englewood, CO 80110
Ph: (303)769-4111 / Fx: (303)769-4310

FABRICATOR:
American Fabricators
10200 E. 100th Ave.
Brighton, Colorado 80001
Ph: (303)228-6228 / Fx: (303)228-6228

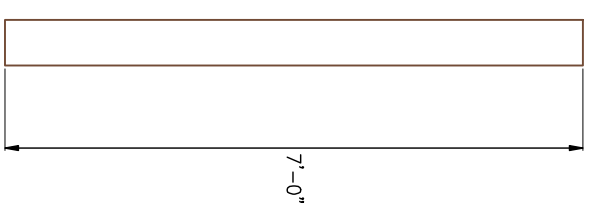
PROJECT: **Harold D Thompson WRF**
TITLE: **Landing and Lapeyre Stairs**

Revision:	DWG BY:	CHK BY:
1. -	CCA	EDO
2. -		
3. -		
4. -		
5. -		

DATE: **JUL 29 2011**
SHEET NUMBER: **SD - 13**



SECTION
A
SP-13



STATIONARY BOLLARD
(10X)
SCH80 PIPE
PRIMED

Notes:

1. Pipe conforms to ASTM A500 Gr. B steel.
2. Shop primed with Tremec Series 37H-77 or equivalent.
3. Construction drawing HW-1 & HW-13 Details DL-3 #3.

1 **Battai Section**

2 **Bollard**

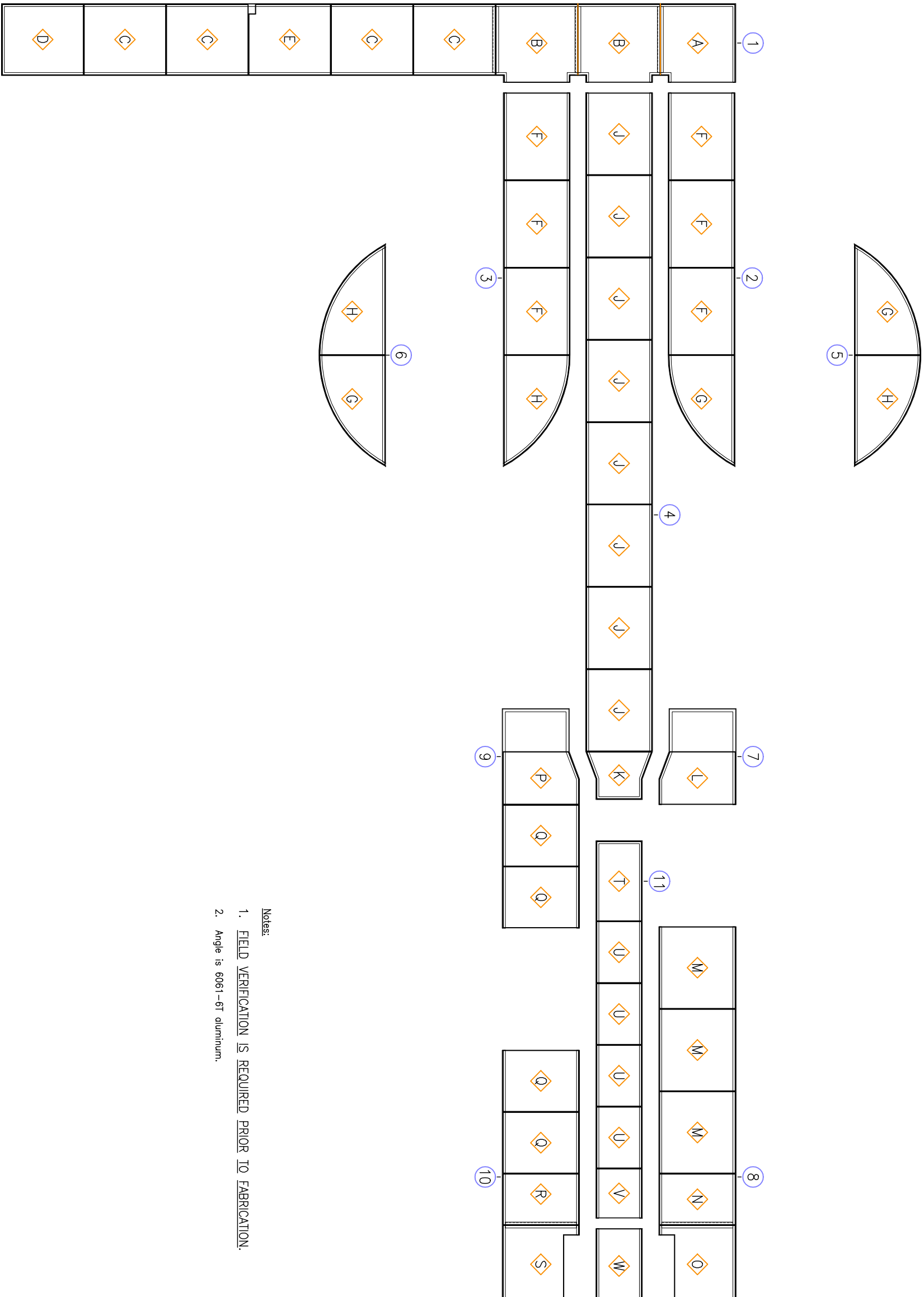
CONTRACTOR:
Weaver General Construction Co.
3679 S. Huron St. Suite 404
Englewood, CO 80110
Ph: (303)769-4111 / Fx: (303)769-4310

FABRICATOR:
American Fabricators
10220 E. 100th Ave.
Brighton, Colorado 80001
Ph: (303)228-6223 / Fx: (303)228-6223

PROJECT: **Harold D Thompson WRF**
TITLE: **Battai Section - Bollard**

Revision:	DWG. BY:	CHK. BY:
1. -	CCA	EDO
2. -		
3. -		
4. -		
5. -		

DATE: **JUL 29 2011**
SHEET NUMBER: **SD - 14**



- Notes:
1. FIELD VERIFICATION IS REQUIRED PRIOR TO FABRICATION.
 2. Angle is 6061-6T aluminum.

1 **Detail Section**

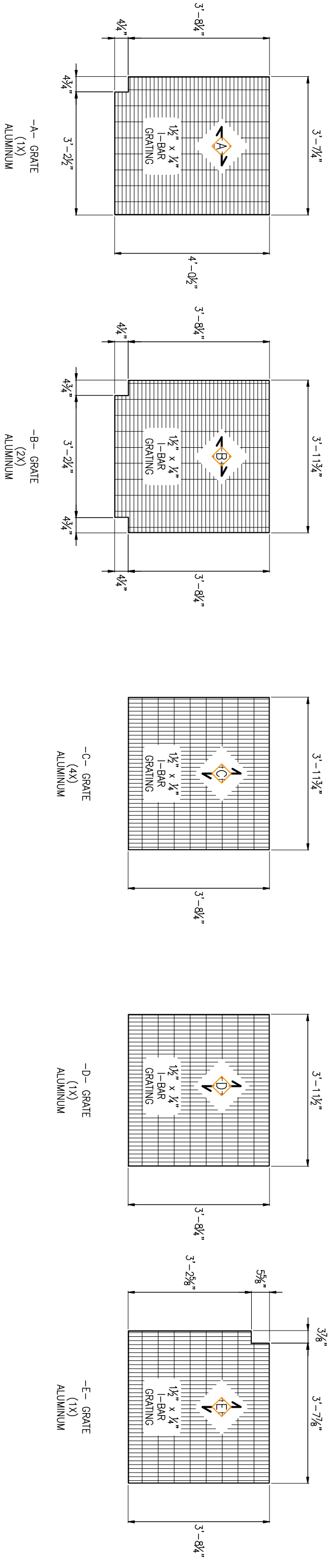
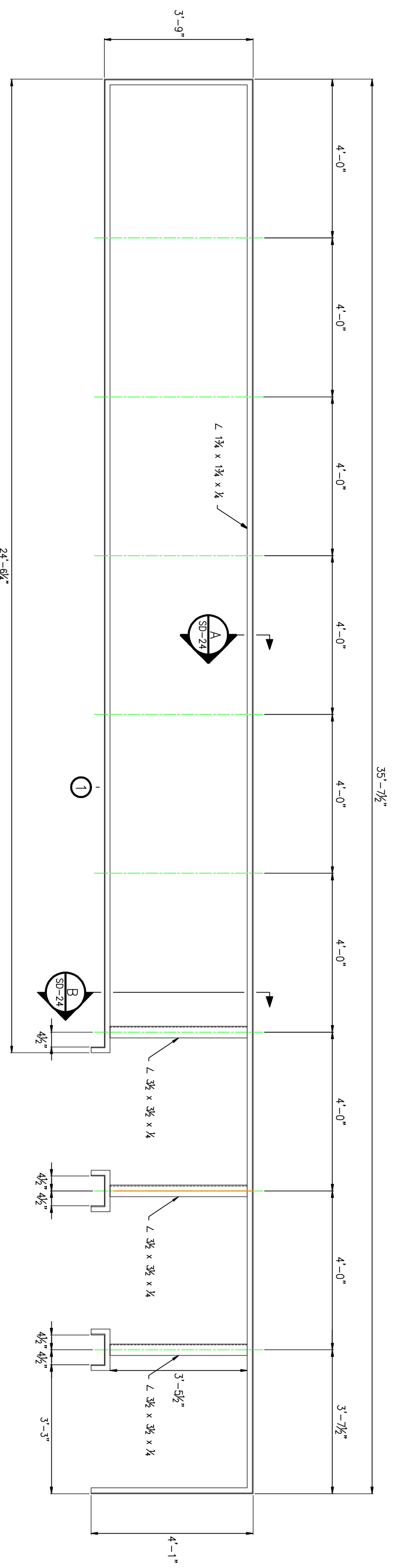
CONTRACTOR:
Weaver General Construction Co.
 3679 S. Huron St. Suite 404
 Englewood, CO 80110
 Ph: (303)769-4111 / Fx: (303)769-4310

FABRICATOR:
American Fabricators
 10220 E. 100th Ave.
 Brighton, Colorado 80001
 Ph: (303)228-6228 / Fx: (303)228-6228

PROJECT: **Harold D Thompson WRF**
 TITLE: **Landing and Layup Stairs**

Revision:	DWG BY: CCA	CHK BY: EDO
1. -		
2. -		
3. -		
4. -		
5. -		

DATE: **JUL 29 2011**
 SHEET NUMBER: **SD - 15**



1 Embed and Grating Section 1

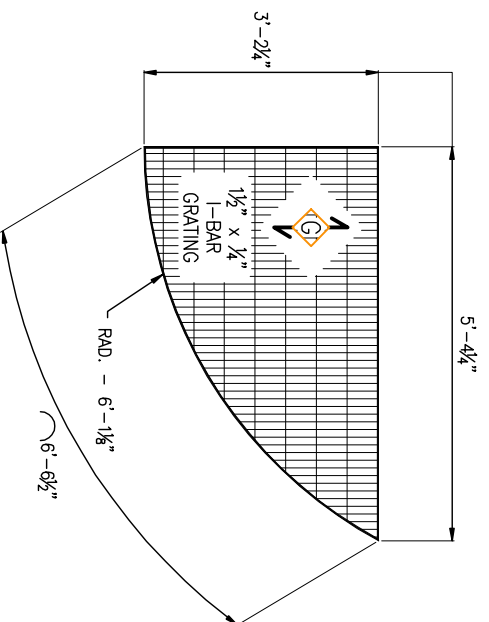
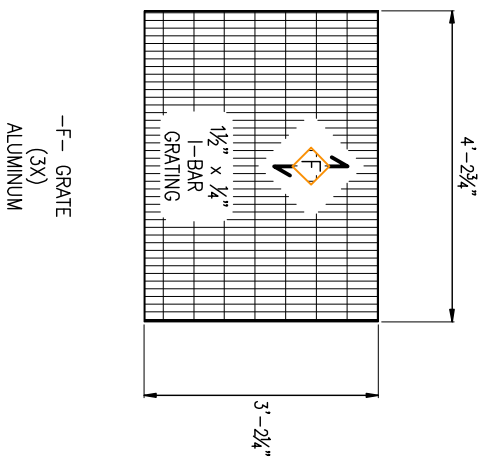
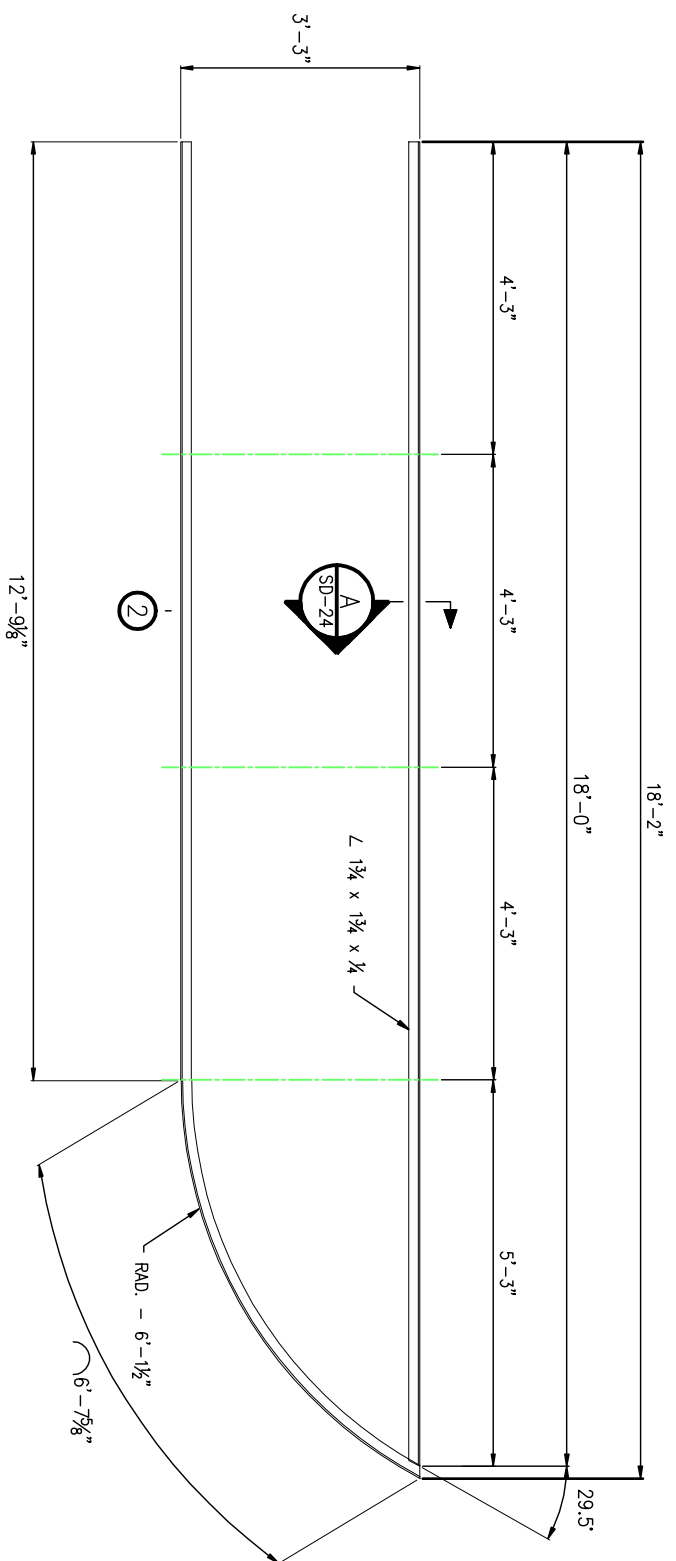
CONTRACTOR:
Weaver General Construction Co.
 3679 S. Huron St. Suite 404
 Englewood, CO 80110
 Ph: (303)769-4111 / Fax: (303)769-4310

FABRICATOR:
American Fabricators
 10220 E. 100th Ave.
 Brighton, Colorado 80001
 Ph: (303)226-6226 / Fax: (303)226-6226

PROJECT: **Harold D Thompson WRF**
 TITLE: **Section 1 - Embed and Grating**

Revision:	DWG BY: CCA	CHK BY: EDO
1. -		
2. -		
3. -		
4. -		
5. -		

DATE: **JUL 29 2011**
 SHEET NUMBER: **SD - 16**



-F- GRATE
(3X)
ALUMINUM

-G- GRATE
(1X)
ALUMINUM

1 Embed and Grating Section 2

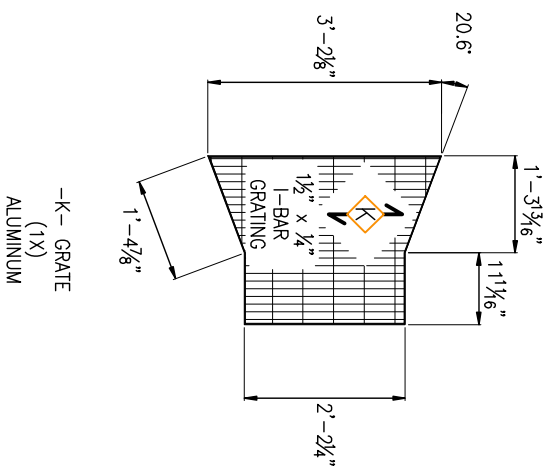
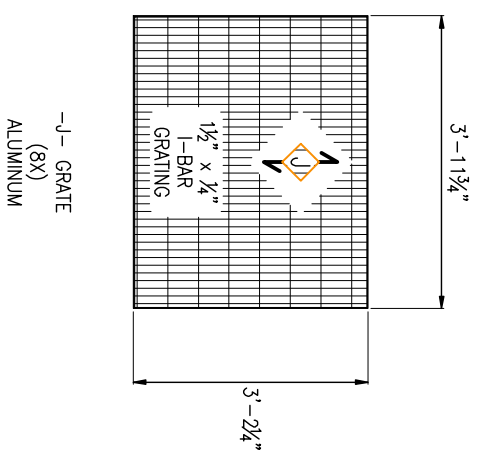
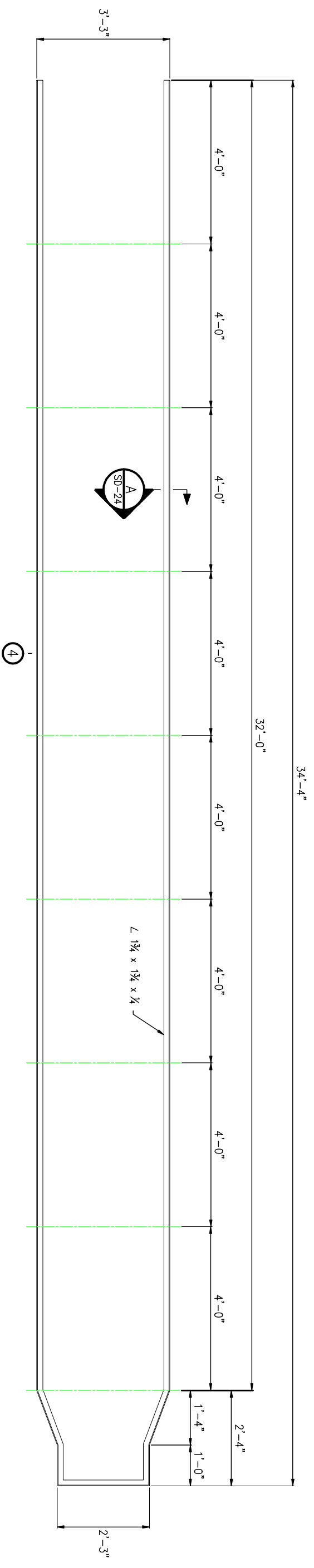
CONTRACTOR:
Weaver General Construction Co.
3679 S. Huron St. Suite 404
Englewood, CO 80110
Ph: (303)769-4111 / Fx: (303)769-4310

FABRICATOR:
American Fabricators
10250 E. 100th Ave.
Brighton, Colorado 80001
Ph: (303)226-6226 / Fx: (303)226-6226

PROJECT: **Harold D Thompson WRF**
TITLE: **Section 2 - Embed and Grating**

Revision:	DWG. BY:	CHK. BY:
1. -	CCA	EDO
2. -		
3. -		
4. -		
5. -		

DATE: **JUL 29 2011**
SHEET NUMBER: **SD - 17**



1 Embed and Grating Section 4

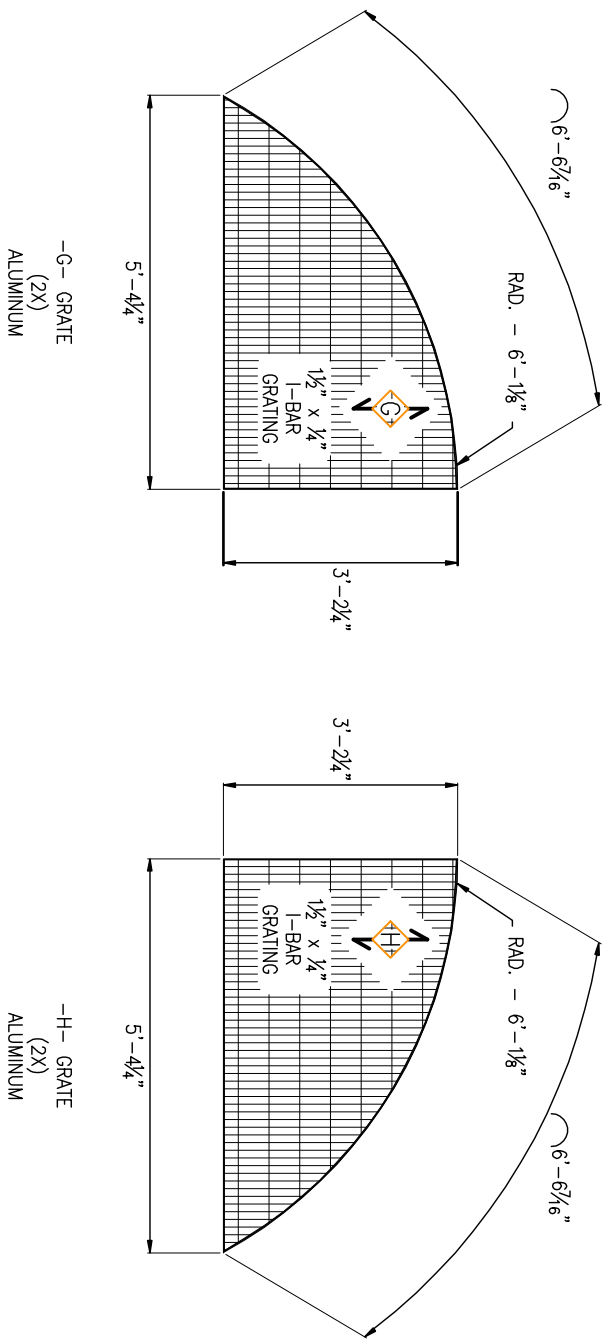
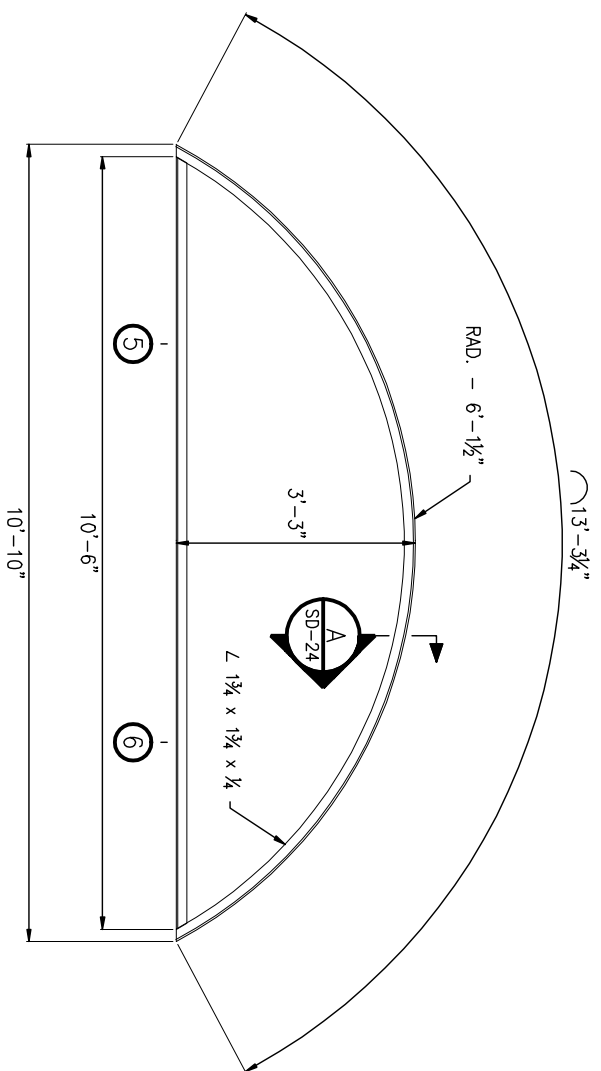
CONTRACTOR:
Weaver General Construction Co.
 3679 S. Huron St. Suite 404
 Englewood, CO 80110
 Ph: (303)789-4111 / Fx: (303)789-4310

FABRICATOR:
American Fabricators
 10200 E. 100th Ave.
 Brighton, Colorado 80001
 Ph: (303)228-6228 / Fx: (303)228-6228

PROJECT: **Harold D Thompson WRF**
 TITLE: **Section 4 - Embed and Grating**

Revision:	DWG. BY:	CHK. BY:
1. -	CCA	EDO
2. -		
3. -		
4. -		
5. -		

DATE: **JUL 29 2011**
 SHEET NUMBER: **SD - 19**



1 Embed and Grating Sections 5 and 6

-G- GRATE
(2X)
ALUMINUM

-H- GRATE
(2X)
ALUMINUM

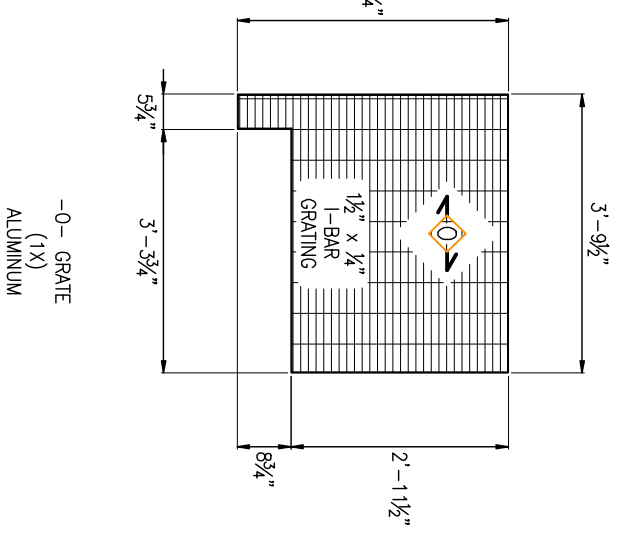
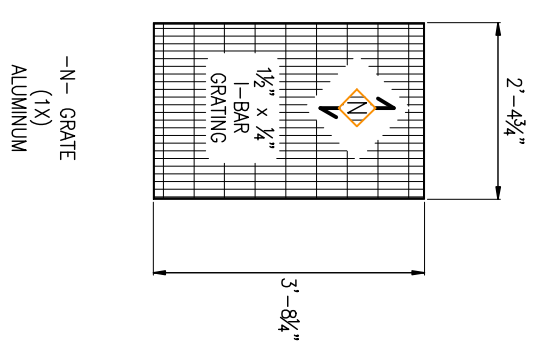
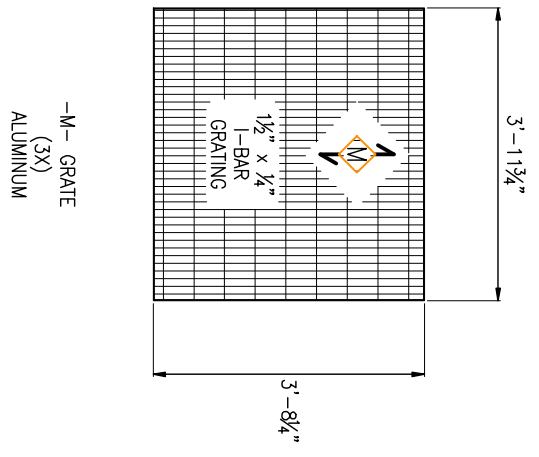
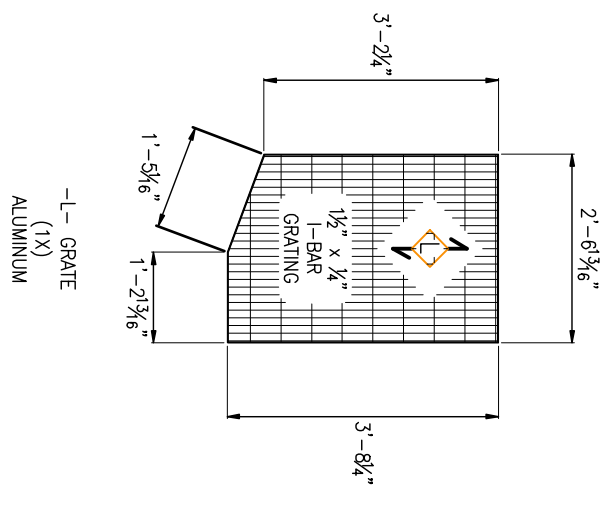
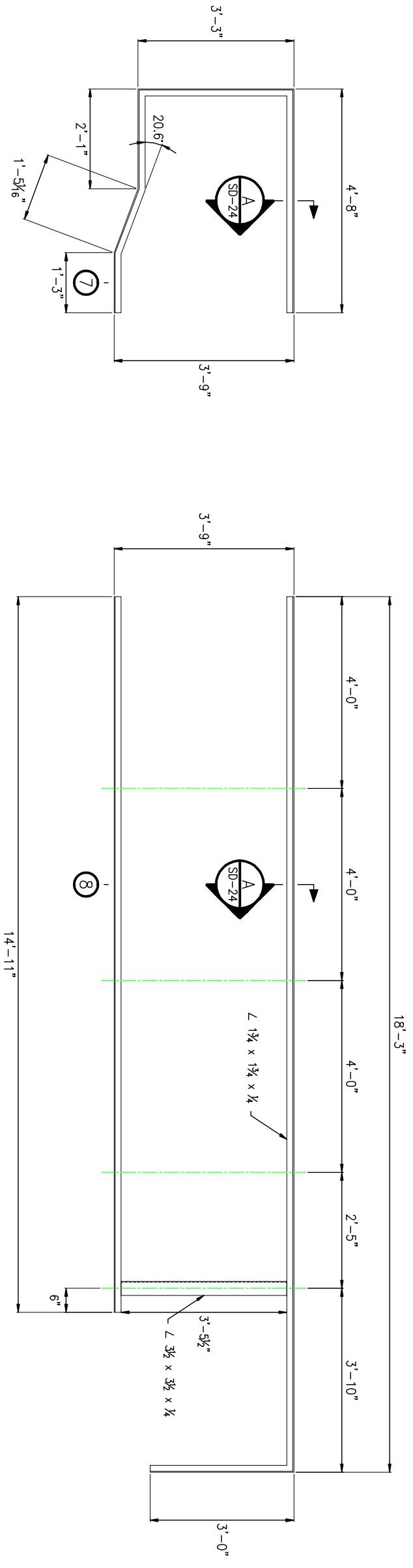
CONTRACTOR:
Weaver General Construction Co.
3679 S. Huron St. Suite 404
Englewood, CO 80110
Ph: (303)769-4111 / Fx: (303)769-4310

FABRICATOR:
American Fabricators
10200 E. 100th Ave.
Brighton, Colorado 80001
Ph: (303)228-6228 / Fx: (303)228-6228

PROJECT: **Harold D Thompson WRF**
TITLE: **Sections 5 and 6 - Embed and Grating**

Revision:	DWG. BY:	CHK. BY:
1. -	CCA	EDO
2. -		
3. -		
4. -		
5. -		

DATE: **JUL 29 2011**
SHEET NUMBER: **SD - 20**



1 Embed and Grating Sections 7 and 8

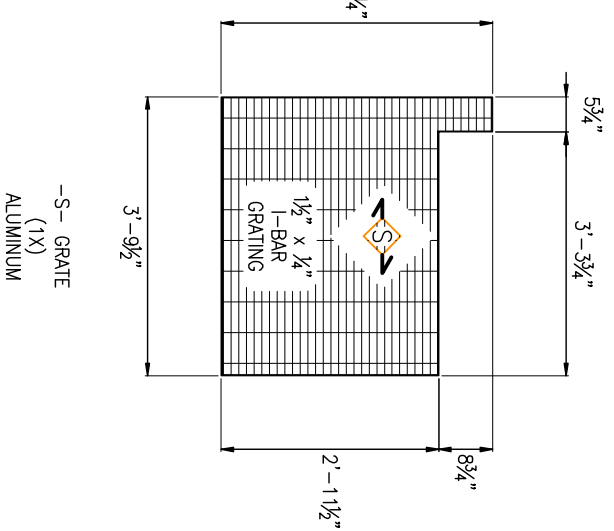
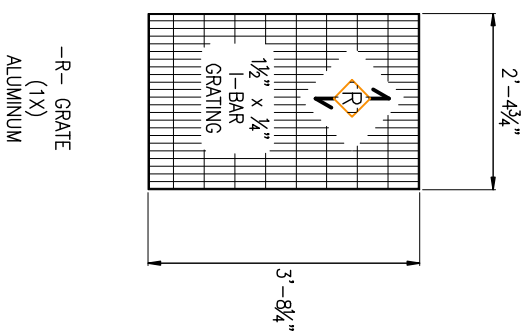
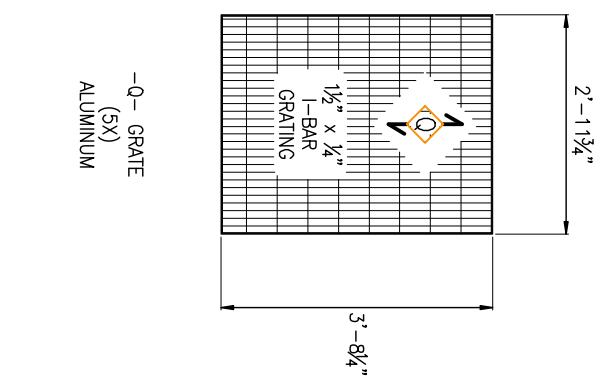
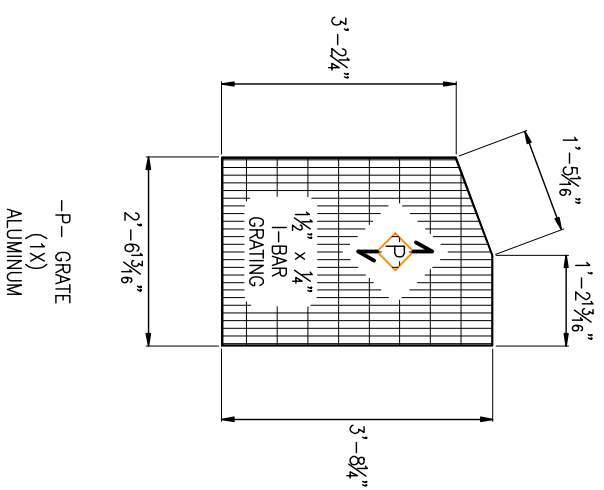
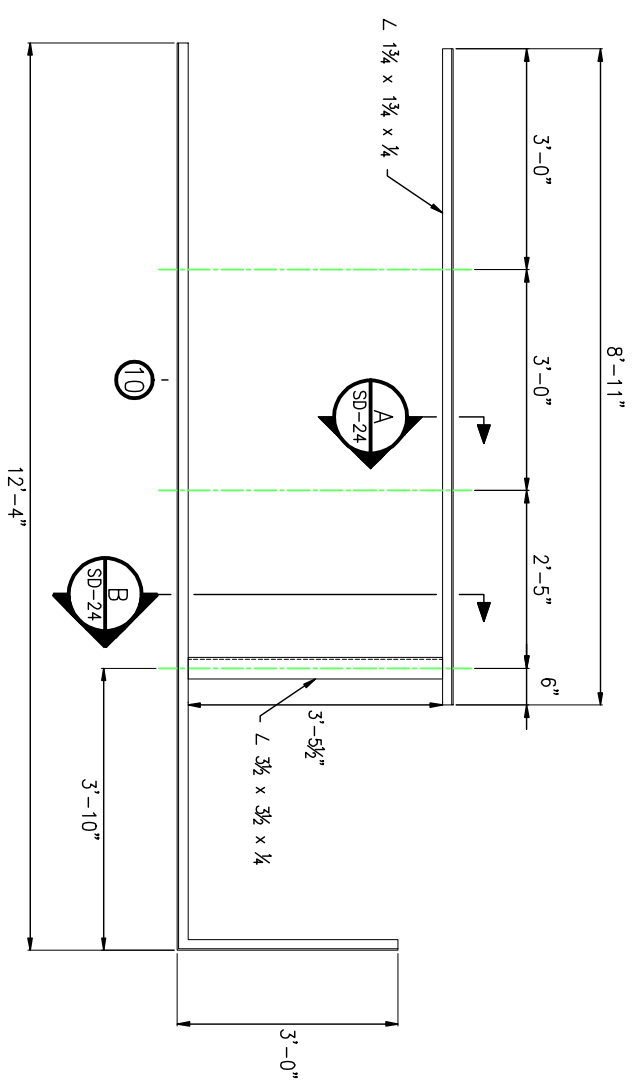
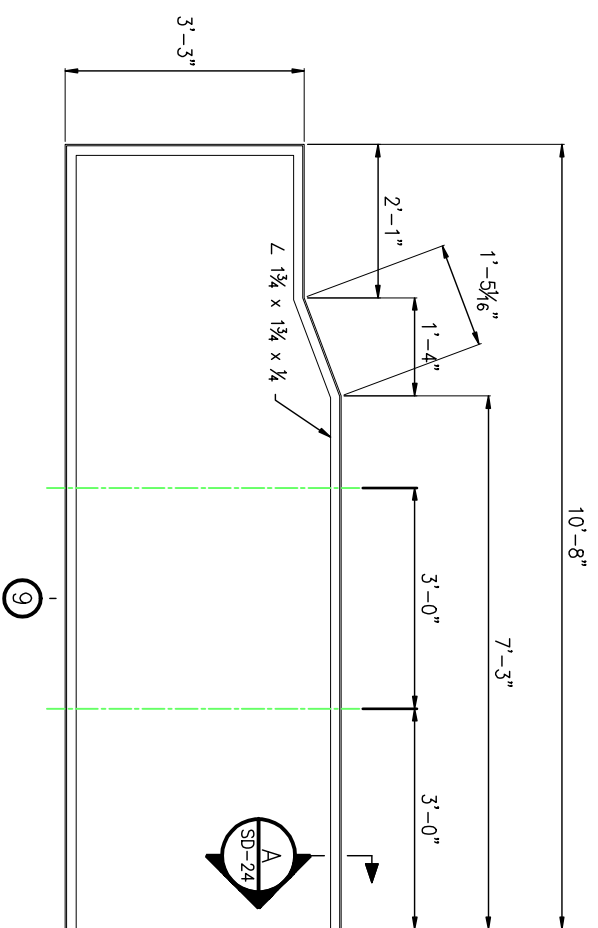
CONTRACTOR:
Weaver General Construction Co.
3679 S. Huron St. Suite 404
Englewood, CO 80110
Ph: (303)769-4111 / Fx: (303)769-4310

FABRICATOR:
American Fabricators
10200 E. 100th Ave.
Brighton, Colorado 80001
Ph: (303)228-6228 / Fx: (303)228-6228

PROJECT: **Harold D Thompson WRF**
TITLE: **Sections 7 and 8 - Embed and Grating**

Revision:	DWG. BY:	CHK. BY:
1. -	CCA	EDO
2. -		
3. -		
4. -		
5. -		

DATE: **JUL 29 2011**
SHEET NUMBER: **SD - 21**



-P- GRATE
(1X)
ALUMINUM

-Q- GRATE
(5X)
ALUMINUM

-R- GRATE
(1X)
ALUMINUM

-S- GRATE
(1X)
ALUMINUM

1 Embed and Grating Sections 9 and 10

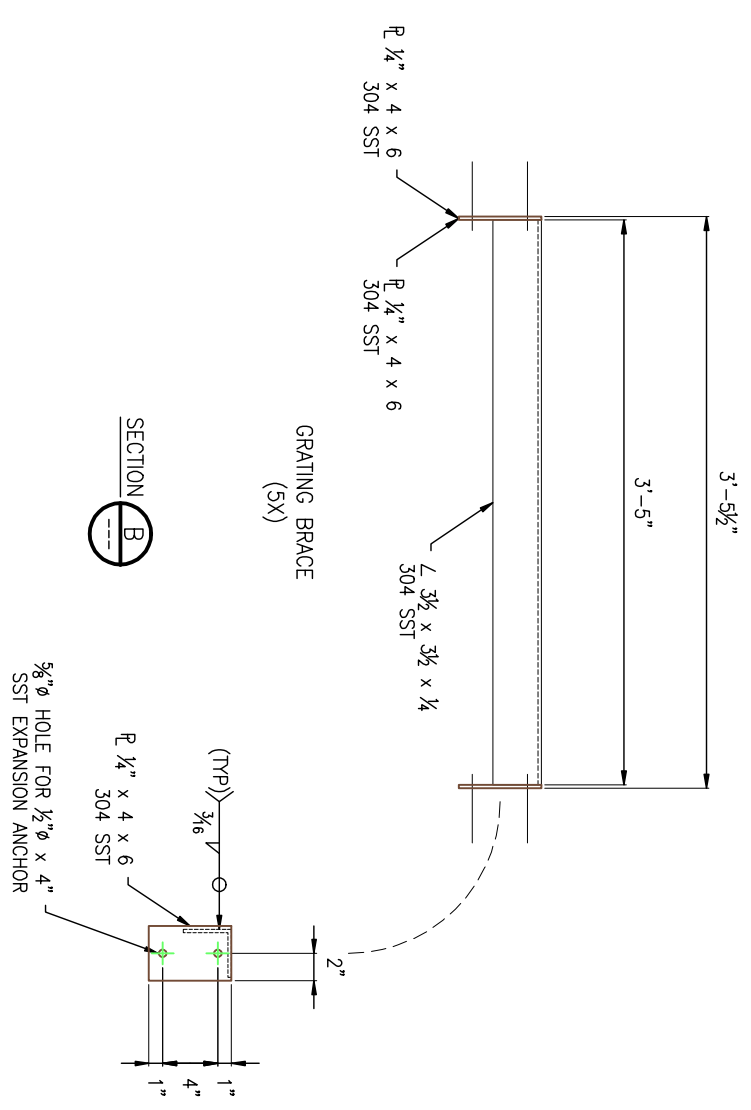
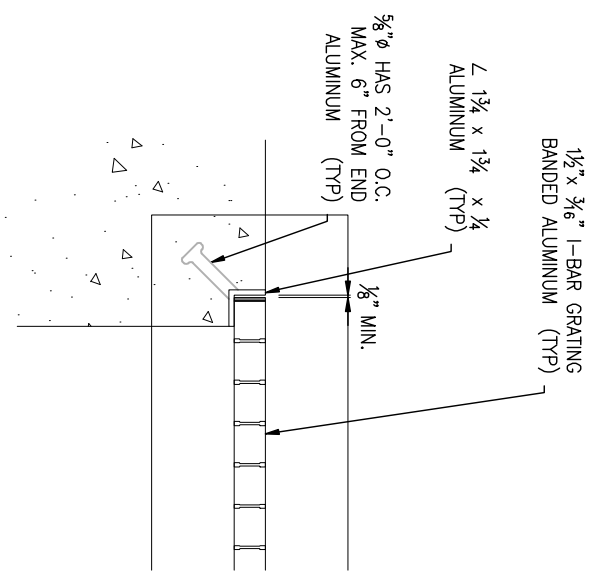
CONTRACTOR:
Weaver General Construction Co.
3679 S. Huron St. Suite 404
Englewood, CO 80110
Ph: (303)769-4111 / Fx: (303)769-4310

FABRICATOR:
American Fabricators
10200 E. 100th Ave.
Brighton, Colorado 80001
Ph: (303)226-6223 / Fx: (303)226-6223

PROJECT: **Harold D Thompson WRF**
TITLE: **Sections 9 and 10 - Embed and Grating**

Revision:	DWG BY:	CHK BY:
1. -	CCA	EDO
2. -		
3. -		
4. -		
5. -		

DATE: **JUL 29 2011**
SHEET NUMBER: **SD - 22**



Notes:

1. Embed angle conforms to ASTM B308 – 6061-T6.
2. Grating brace angle is 316 stainless steel.
3. Plate is 316 stainless steel.
4. I-bar grating is ASTM B221 – 6063-T6.
4. Expansion anchor bolts are 316 stainless steel.
5. Construction drawing HW-19.

1 Embed Angle Section and Grating Brace Section

CONTRACTOR:
Weaver General Construction Co.
3679 S. Huron St. Suite 404
Englewood, CO 80110
Ph: (303)789-4111 / Fx: (303)789-4310

FABRICATOR:
American Fabricators
10200 E. 100th Ave.
Brighton, Colorado 80001
Ph: (303)228-6228 / Fx: (303)228-6228

PROJECT: **Harold D Thompson WRF**
TITLE: **Embed Angle and Grating Brace Sections**

Revision:	DWG BY: CCA	CHK BY: EDO
1. -		
2. -		
3. -		
4. -		
5. -		

DATE: **JUL 29 2011**
SHEET NUMBER: **SD - 24**