



WEAVER CONSTRUCTION MANAGEMENT, INC.
 3679 S. Huron St., Suite 404
 Englewood, CO 80110
 Phone: (303) 789-4111 FAX: (303) 789-4310

SUBMITTAL TRANSMITTAL

January 31, 2012
Submittal No: 05500-007

PROJECT: **Harold Thompson Regional WRF**
 Birdsall Rd.
 Fountain, CO 80817
 Job No. 2908

ENGINEER: **GMS, Inc.**
 611 No. Weber St., #300
 Colorado Springs, CO 80903
 719-475-2935 Roger Sams

OWNER: **Lower Fountain Metropolitan
 Sewage Disposal District**
 901 S. Santa Fe Ave.
 Fountain, CO 80817
 719-382-5303 James Heckman

CONTRACTOR: **American Fabricators, Inc**
 10290 E. 106th Ave.
 Brighton, Co 80601
 303-296-6223 Chuck Allen
 amerfab@msn.com

SUBJECT: MAU Platform at Headworks - WCM Comments, Shop Drawings SD-01, SD-02, SD-03 and SD-04

SPEC SECTION: 05500 - Metal Fabrications

PREVIOUS SUBMISSION DATES:

DEVIATIONS FROM SPEC: ___ YES X NO

CONTRACTOR'S STAMP: This submittal has been reviewed by Weaver General Construction and approved with respect to the means, methods, techniques, & safety precautions & programs incidental thereto. Weaver General Construction also warrants that this submittal complies with contracted documents and comprises on deviations thereto:

<p>Contractor's Stamp:</p> <p>Date: 1/31/12 Reviewed by: Tyler Ammerman () Reviewed Without Comments (X) Reviewed With Comments</p> <p>ENGINEER'S COMMENTS:</p>	<p>Engineer's Stamp:</p>
--	--------------------------



Project: HDTWRF Project

Location: Fountain, CO

Supplier: American Fabricators Inc.

Date: 1/24/12

Submittal for: 05500-007 MAU-Platform at Headworks

Submittal Review Comments

- 1. Reference page MHW-3 on construction drawings.**

Harold D. Thompson
Change Order II
MAU Platform

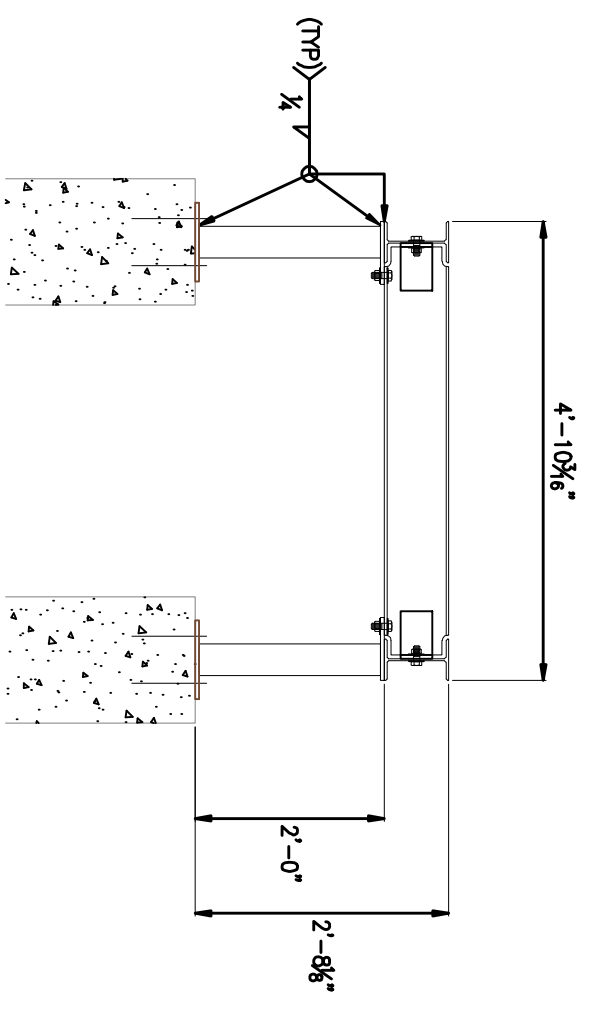
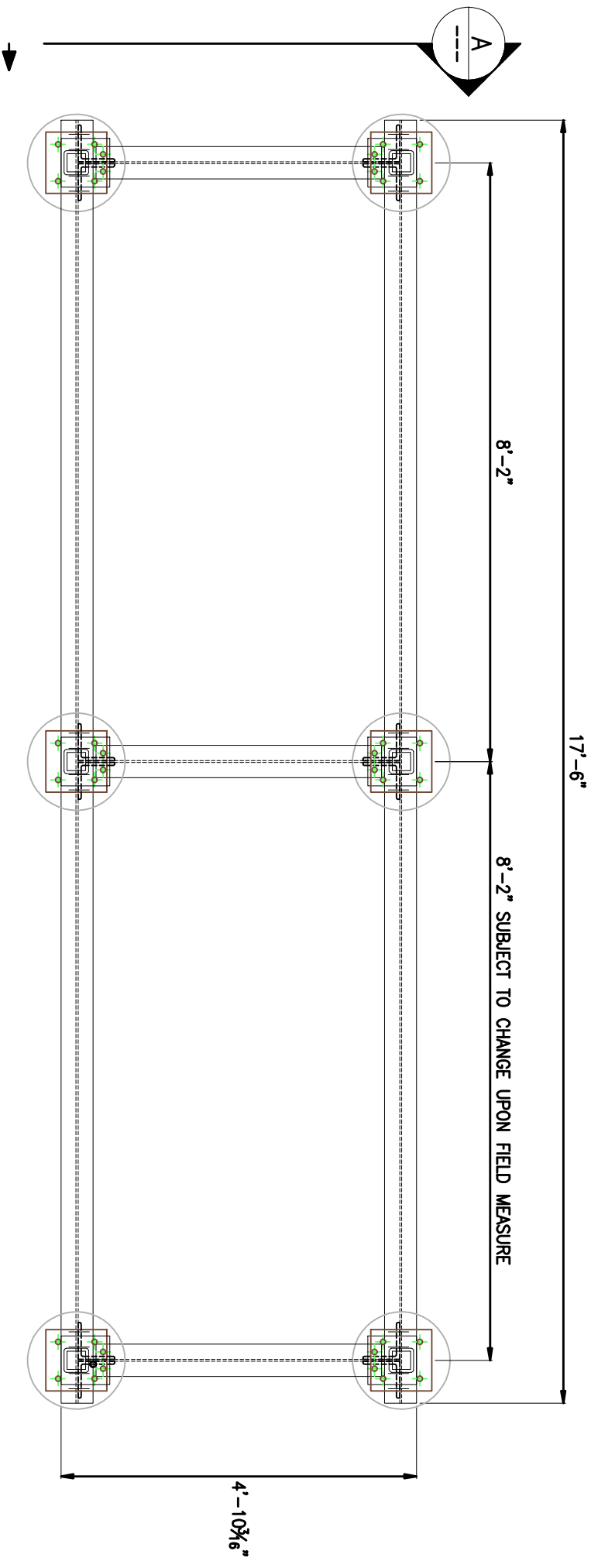
Weaver General Construction Company

JOB# 000000000 P.O.# 000000000 TAX EXEMPT# 000000000

CONTRACTOR:
Weaver General Construction Co.
3670 S. Havana St. Suite 404
Englewood, CO 80110
Ph: (303)298-4111 / Fx: (303)298-4318

FABRICATOR:
American Fabricators
10290 E. 108th Ave.
Brighton, Colorado 80601
Ph: (303)298-6223 / Fx: (303)298-6283

PROJECT: **HD Thompson Change Order II**
TITLE: Title
DWG BR: CCA | CHK BR: 800
DATE: 08/19/2011
SHEET NUMBER: T - 01



SECTION A
A

- Notes:**
1. **FIELD VERIFICATION IS REQUIRED PRIOR TO FABRICATION.**
 - a. Leg location dimensions of the MAU are required for placement of hold down angles prior to platform fabrication.
 - b. All dimensions stated on drawings are subject to change upon field measure results
 2. Plate conforms to ASTM A36 steel.
 3. Beams conforms to ASTM A572/A992 Gr. 50 steel.
 4. Angle conform to ASTM A36 steel.
 5. Square tubing conforms to ASTM A500 Gr. B Steel.
 6. Material to be galvanized is per AZZ Galvanizing specifications and requirements. Conforms to ASTM A 123/A and A123M-02.

1 MAU Platform Plan

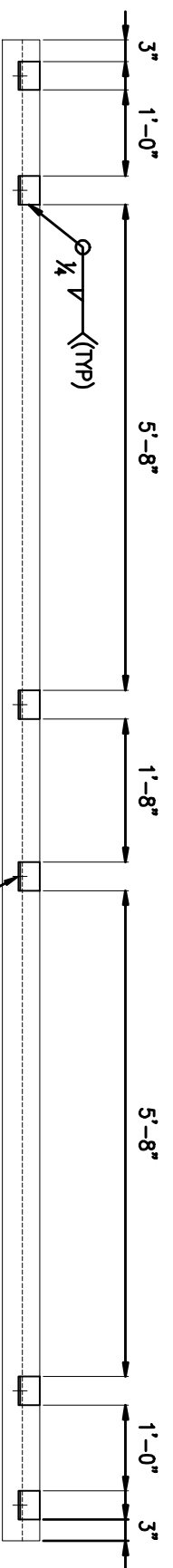
CONTRACTOR:
Weaver General Construction Co.
 3679 S. Huron St. Suite 404
 Englewood, CO 80110
 Ph: (303)769-4111 / Fx: (303)769-4310

FABRICATOR:
Amadson Fabricators
 14200 E. 140th Ave.
 Englewood, Colorado 80110
 Ph: (303)769-4111 / Fx: (303)769-4310

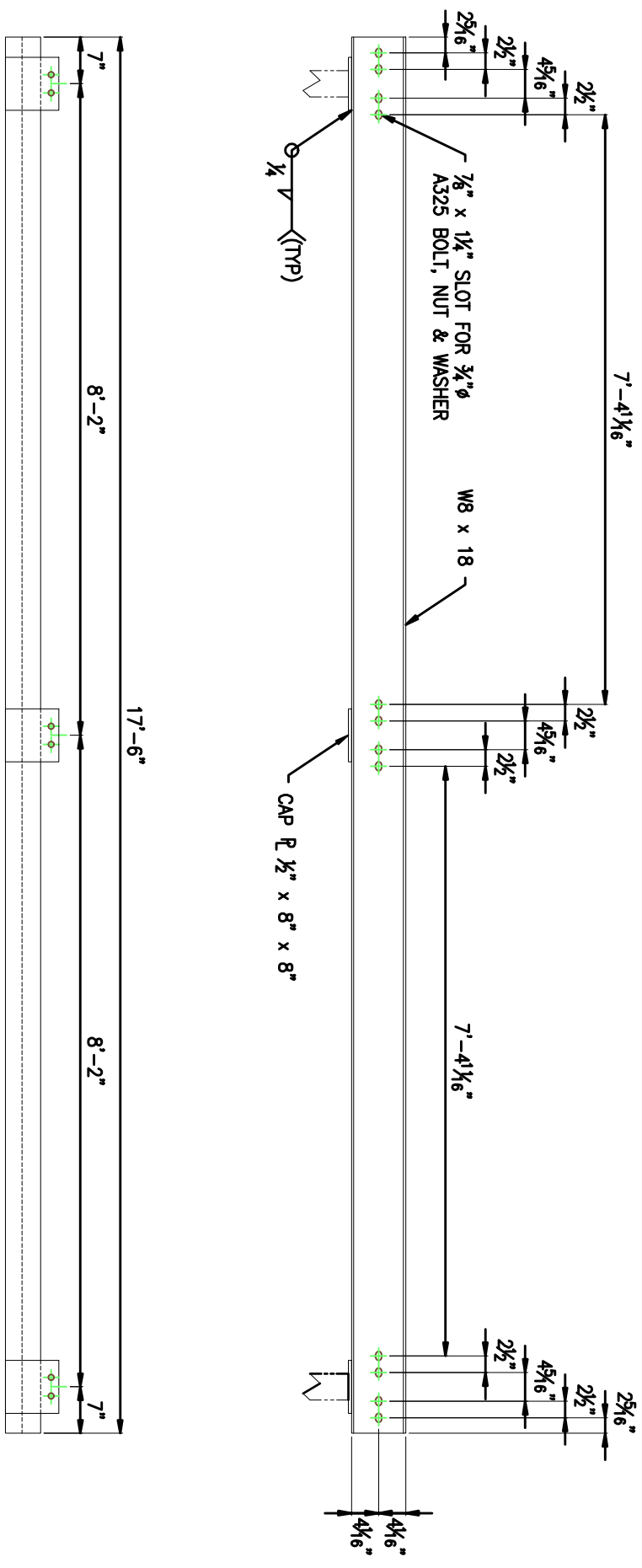
PROJECT: **HD Thompson Charge Order I**
 TITLE: **MAU Platform**

Revision:	DATE:	DWG BY:	CHK BY:
1. Change width 4'-4 1/2" to 4'-10 3/16"	01-23-12	CCA	EDO
2. - per Tyler Ammerman	-		
3. -	-		
4. -	-		

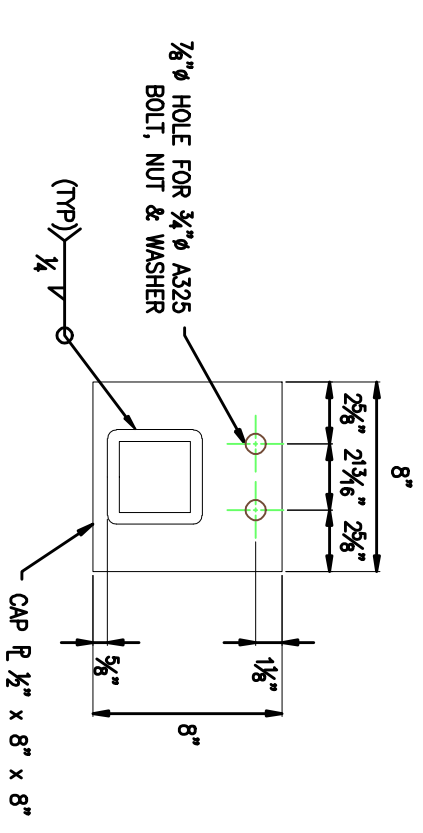
SHEET NUMBER: **SD - 01**



L 4 x 3 x 1/4 x 0'-4"
TYP
SEE NOTE (1 - d) SD-01



PLATFORM FRAME BEAM
W8 x 18
GALVANIZED
(2X)



CAP R
1/2" x 8 x 8
GALVANIZED
(6X)

1 MAU Platform Beam Elevation

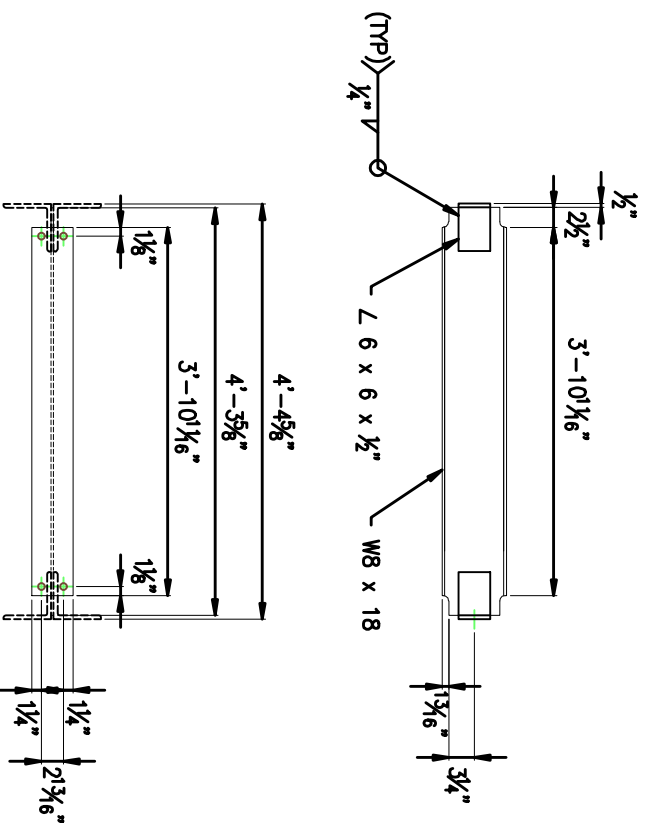
CONTRACTOR:
Weaver General Construction Co.
3679 S. Huron St. Suite 404
Englewood, CO 80110
Ph: (303)769-4111 / Fax: (303)769-4310

FABRICATOR:
Amadon Fabrication
14200 E. 140th Ave.
Englewood, Colorado 80151
Ph: (303)769-4310 / Fax: (303)769-4310

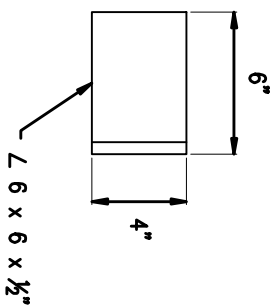
PROJECT: **HD Thompson Charge Order I**
TITLE: MAU Platform Beam

Revision:	DMG BR: CCA	CHK BR: EDO
1. -		
2. -		
3. -		
4. -		
5. -		

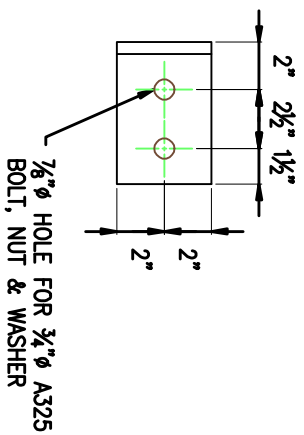
DATE: DEC 29 2011
SHEET NUMBER: SD - 02



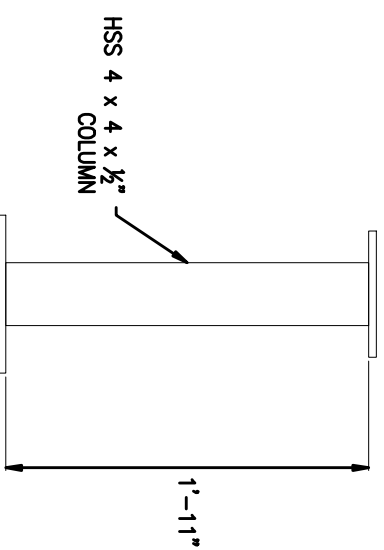
PLATFORM FRAME CROSS BEAM
W8 x 18
GALVANIZED
(3X)



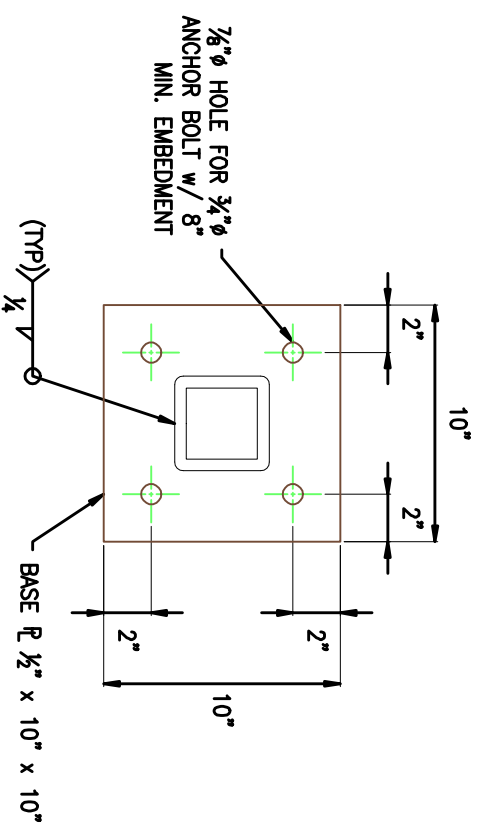
CROSS BEAM CLIP ANGLE
L 6 x 6 x 1/2
GALVANIZED
(12X)



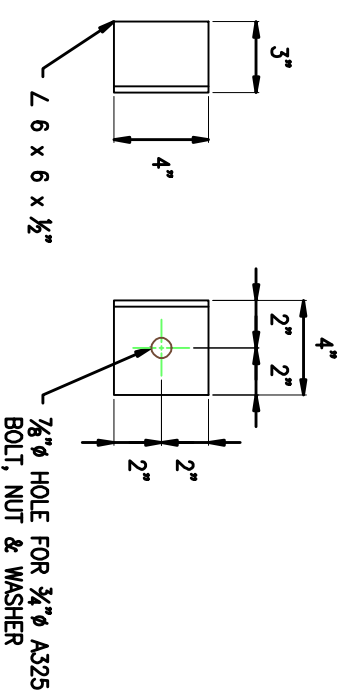
7/8" ϕ HOLE FOR 3/4" ϕ A325 ANCHOR BOLT w/ 8" MIN. EMBEDMENT



PLATFORM COLUMN
HSS 4 x 4 x 1/2
GALVANIZED
(6X)



BASE PLATE
1/2" x 10" x 10"
GALVANIZED
(6X)



MAU CONNECTION BRACKET
L 4 x 3 x 1/4
GALVANIZED
(12X)
SEE NOTE

Note:
1. CONNECTION BRACKETS ARE TO BE FIELD WELD BY WEAVER CONSTRUCTION TO MATCH MAU LEGS.

1 MAU Platform Cross Beam Elevation

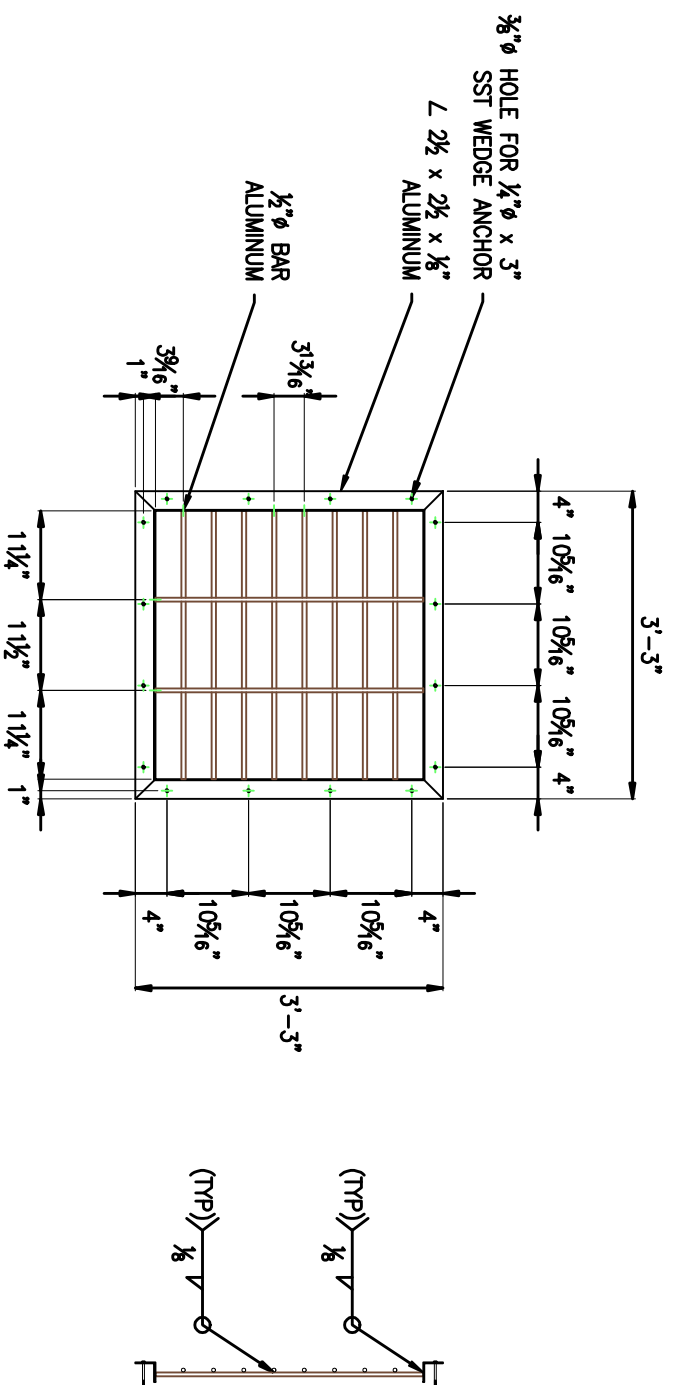
CONTRACTOR:
Weaver General Construction Co.
3679 S. Huron St. Suite 404
Englewood, CO 80110
Ph: (303)769-4111 / Fax: (303)769-4310

FABRICATOR:
Anderson Fabricators
14200 E. 140th Ave.
Englewood, Colorado 80150
Ph: (303)769-4111 / Fax: (303)769-4310

PROJECT: **HD Thompson Charge Order I**
TITLE: **MAU Platform Cross Beam**

Revision:	DATE:	DWG BY: CCA	CHK BY: EDO
1. Changed beam length 3'-10" to 4'-3 5/8" per Tyler Amernon	01-23-12		
2. Added note 1 - No MAU cut sheet sent	01-30-12		
3. -	-		
4. -	-		

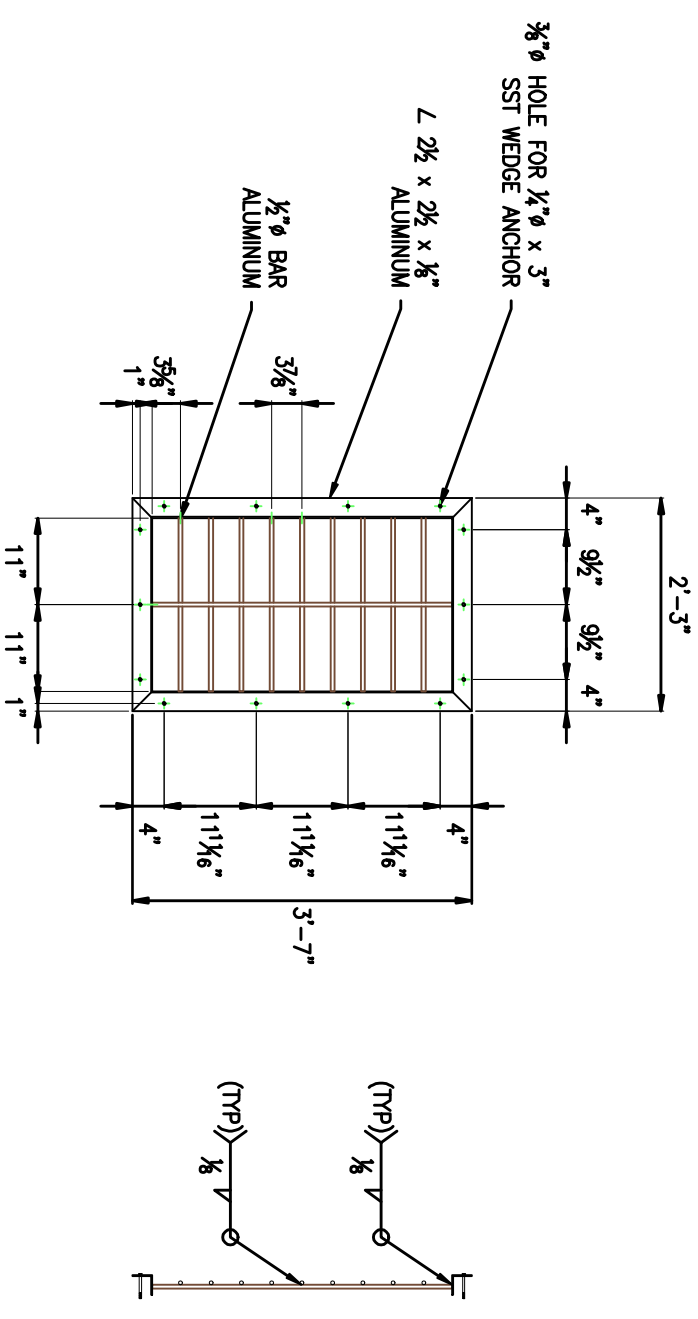
SHEET NUMBER: **SD - 03**



34" x 34" WALL
SECURITY BAR
(1X)

Notes:

1. Aluminum angle is ASTM B221 – 6063-T52 Aluminum.
2. Aluminum bar is ASTM B211 – 6061 Aluminum.
3. Wedge anchors are 304 stainless steel.



22" x 38" WALL
SECURITY BAR
(1X)

1 **Wall Security Bars**

CONTRACTOR:
Weaver General Construction Co.
3679 S. Huron St. Suite 404
Englewood, CO 80110
Ph: (303)769-4111 / Fx: (303)769-4310

FABRICATOR:
Amadson Fabricators
14200 E. 140th Ave.
Englewood, Colorado 80151
Ph: (303)769-4111 / Fx: (303)769-4310

PROJECT: **HD Thompson Charge Order I**
TITLE: **Security Bars**

Revision:	DATE:	DWG BY:	CHK BY:
1. -		CCA	EDO
2. -			
3. -	DEC 29 2011		
4. -			
5. -			

SHEET NUMBER: **SD - 04**