



Weaver

CONSTRUCTION MANAGEMENT

3679 S Huron Street, Suite 404 Englewood, Colorado 80110
Phone: (303) 789-4111 FAX: (303) 789-4310

SUBMITTAL TRANSMITTAL

March 22, 2012

Submittal No: 05500-008.A

PROJECT: **Harold Thompson Regional WRF**
Birdsall Rd.
Fountain, CO 80817
Job No. 2908

ENGINEER: **GMS, Inc.**
611 No. Weber St., #300
Colorado Springs, CO 80903
719-475-2935 Roger Sams

OWNER: **Lower Fountain Metropolitan
Sewage Disposal District**
901 S. Santa Fe Ave.
Fountain, CO 80817
719-382-5303 James Heckman

CONTRACTOR: **American Fabricators, Inc**
10290 E. 106th Ave.
Brighton, Co 80601
303-296-6223 Chuck Allen
amerfab@msn.com

SUBJECT: Resubmittal - Aeration Basin Level Control Structure - WCM Comments, Notes, Stair sheet, Revision 1 of Shop Drawings SD-01, SD-02, SD-03 and SD-04.

SPEC SECTION: 05500 - Metal Fabrications

PREVIOUS SUBMISSION DATES: 1/31/12

DEVIATIONS FROM SPEC: ___ YES X NO

CONTRACTOR'S STAMP: This submittal has been reviewed by Weaver Construction Management and, unless indicated otherwise, has been found to be in conformance with the intent of the contract documents.

Contractor's Stamp:

Date: 3/22/12

Reviewed by: Tyler Ammerman

() Reviewed Without Comments

(X) Reviewed With Comments

Engineer's Stamp:

ENGINEER'S
COMMENTS: _____



Project: HDTWRF Project

Location: Fountain, CO

Supplier: American Fabricators Inc.

Date: 3/22/12

Submittal for: Aeration Basin Level control Structure

Submittal Review Comments

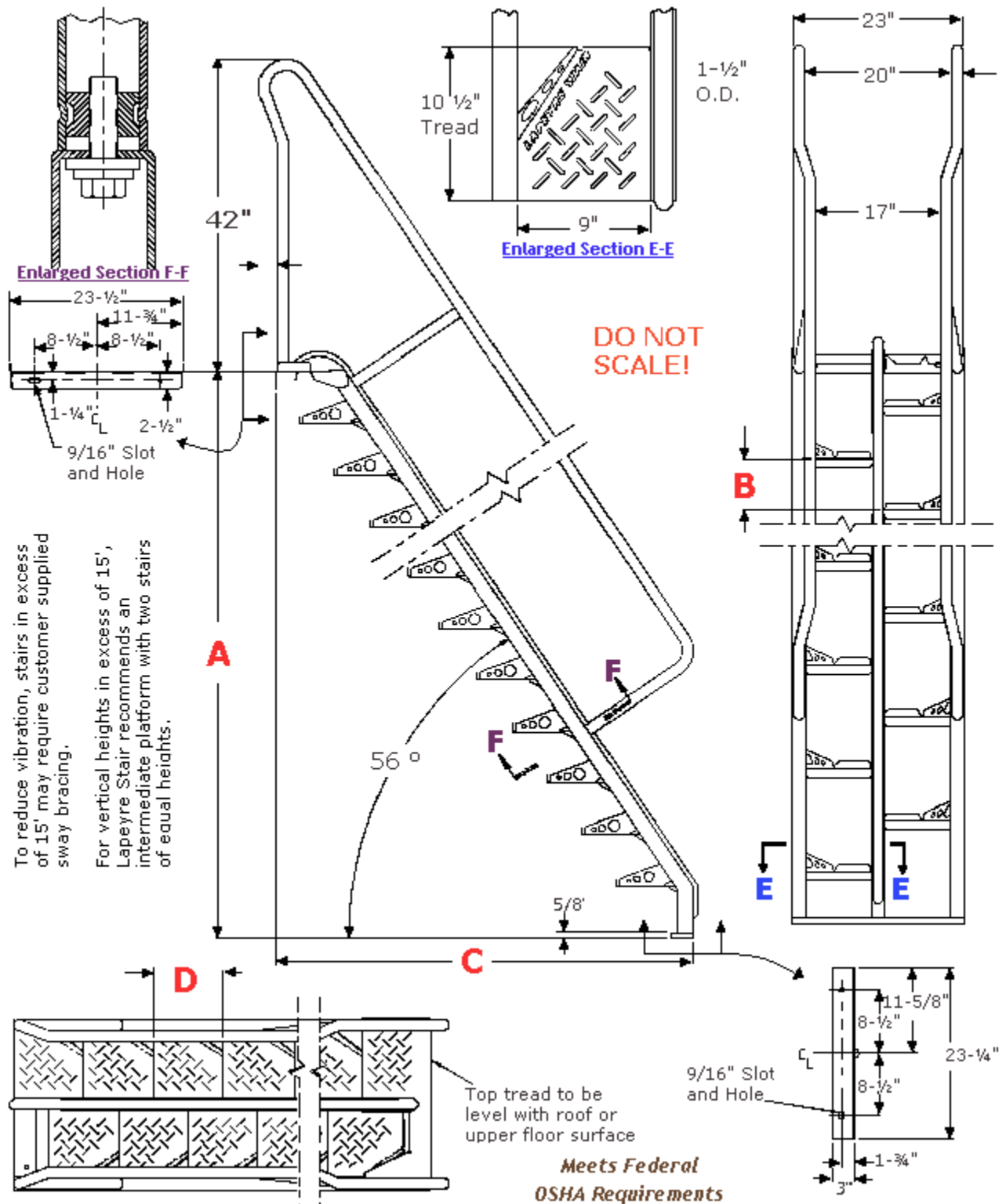
- 1. Sheet SD-1: See attached CAD for specs of Lapeyre stairs.**
- 2. Sheet SD-2: Revisions made per construction drawings.**
- 3. Sheet SD-3: Revisions made to temporary plate.**
- 4. Sheet SD-4: Because grating is field measured, no blockout layout is needed. This ensures accurate fitment of grating. All edges are banded.**
- 5. Sheet SD-5: Replaced with CAD for details.**

A Height	59.000 inches
B Riser Height	7.375 inches
C Horizontal Run	44.321 inches
D Projected Tread	9.949 inches
Number of Risers	8

Lapeyre Stair, Inc. 1-800-535-7631

Lapeyre Stair manufactures products under one or more U.S. and Foreign patents.

Unit Price (US Dollars): \$1,369.94



Description: 59 Inch 56 Degree Carbon Steel Stair, Galvanized with Standard Narrow Handrail

Harold D. Thompson
Change Order II
Aeration Basin Level
Control Structure

Weaver General Construction Company

JOB# 00000000 P.O.# 00000000 TAX EXEMPT# 00000000

CONTRACTOR:
Weaver General Construction Co.
3470 S. Havana St., Suite 404
Englewood, CO 80110
Ph: (303)296-4111 / Fx: (303)296-4318

FABRICATOR:
American Fabricators
10290 E. 108th Ave.
Brighton, Colorado 80601
Ph: (303)296-6223 / Fx: (303)296-6283

PROJECT: **HD Thompson Change Order II**
TITLE: Title
DATE: **JUN 19 2012**
SHEET NUMBER: **T - 01**

DWG BY: CCA CHK BY: 800
DATE: JUN 19 2012
SHEET NUMBER: T - 01

Notes:

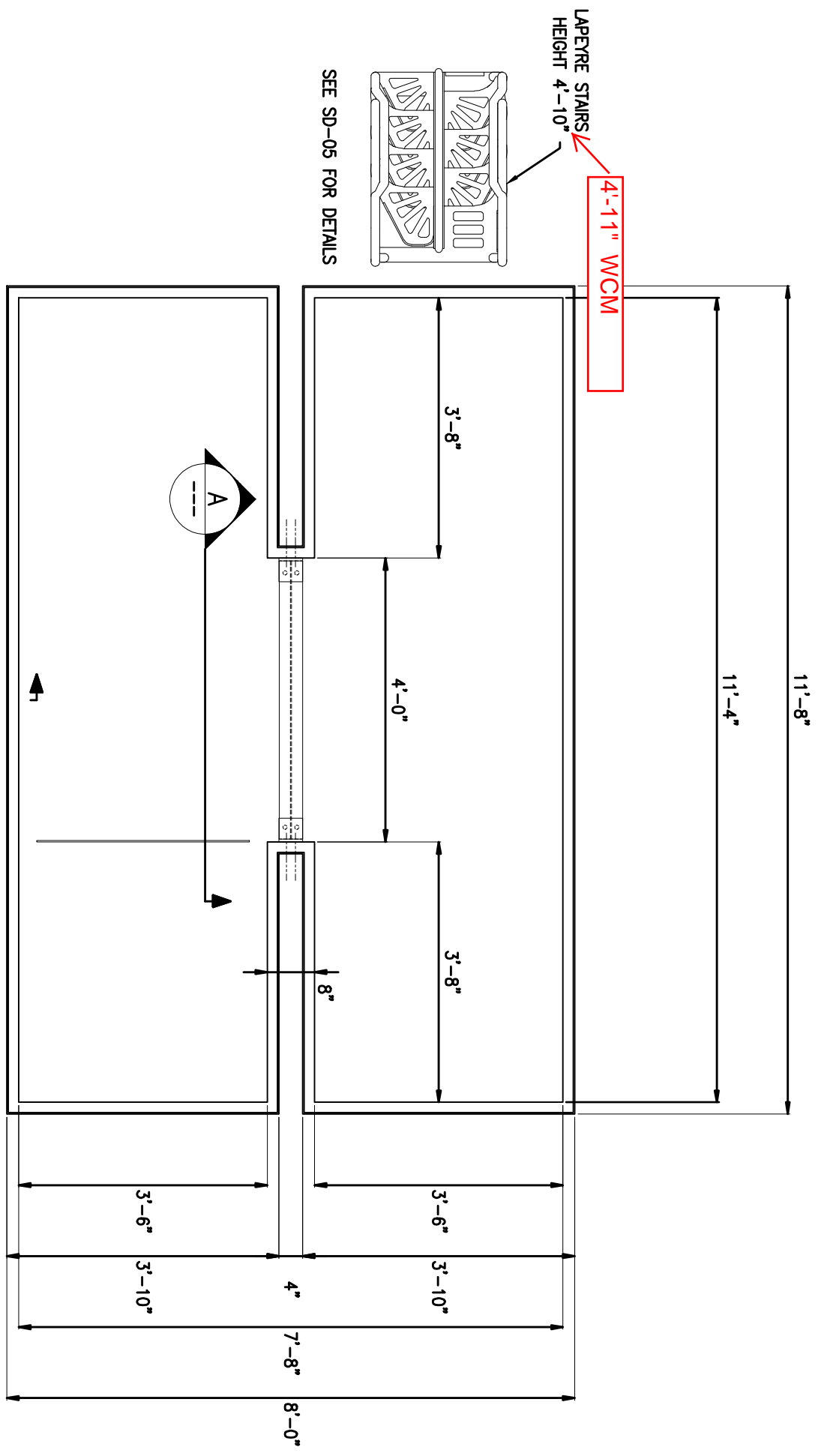
1. FIELD MEASUREMENT REQUIRED PRIOR TO FABRICATION ON GRATING.
2. Beam conforms to ASTM A572/A992 Gr. 50 steel.
3. Ledge angle conform to ASTM A36 steel.
4. Embed angle is 6061-T6 Aluminum. Angles will be coated with tar coat on angle sides to concrete.
5. Material to be galvanized is per AZZ Galvanizing specifications and requirements. Conforms to ASTM A 123/A and A123M-02.

CONTRACTOR:
Wesner General Construction Co.
3670 S. Hansen St. Suite 404
Englewood, CO 80110
Ph: (303)302-4111 / Fx: (303)302-4310

FABRICATOR:
Ashton Fabricator
14200 E. 142nd Ave.
Bryan, Colorado 80401
Ph: (303)302-6223 / Fx: (303)302-6223

PROJECT:	HD Thompson Charge Order	DWG BY: CCA	CHK BY: 800
TITLE:	Notes	DATE: NOV/07/2011	
		SHEET NUMBER:	N - 01

1 Aviation Bath Structure Embed Plan



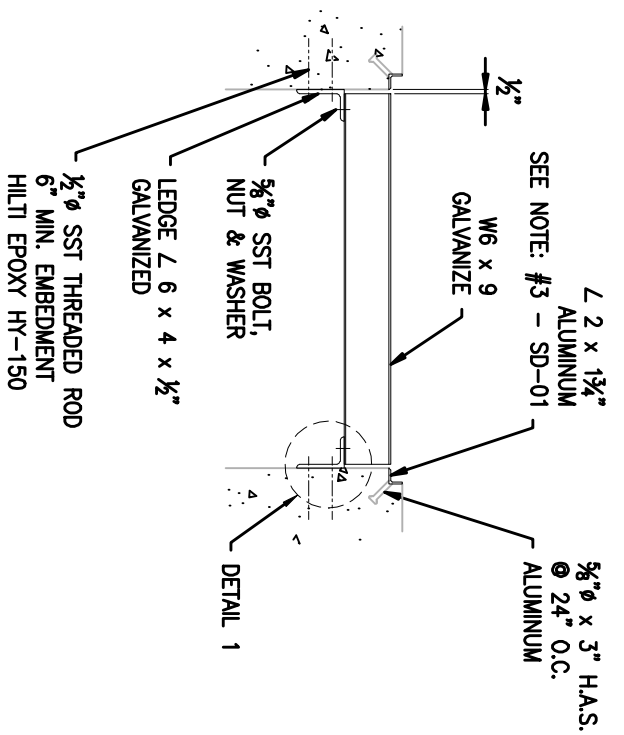
CONTRACTOR:
Weaver General Construction Co.
 3679 S. Huron St. Suite 404
 Englewood, CO 80110
 Ph: (303)769-4111 / Fx: (303)769-4310

FABRICATOR:
Amerson Fabricators
 14220 E. 142nd Ave.
 Englewood, Colorado 80151
 Ph: (303)769-4111 / Fx: (303)769-4310

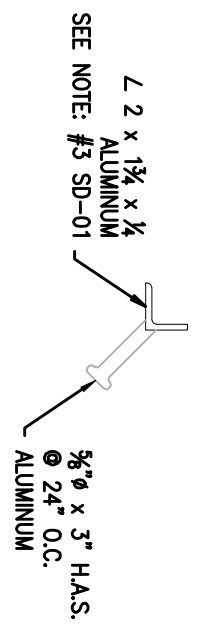
PROJECT: **HD Thompson Charge Order I**
 TITLE: **Aviation Bath Structure Embed**

Revision:	DATE:	DWG BY:	CHK BY:
1. Changed stair height from 5'-4" to 4'-10"	01-23-12	CCA	EDO
2. Notes #3 Added coating	01-23-12		
3. -	-		
4. -	-		

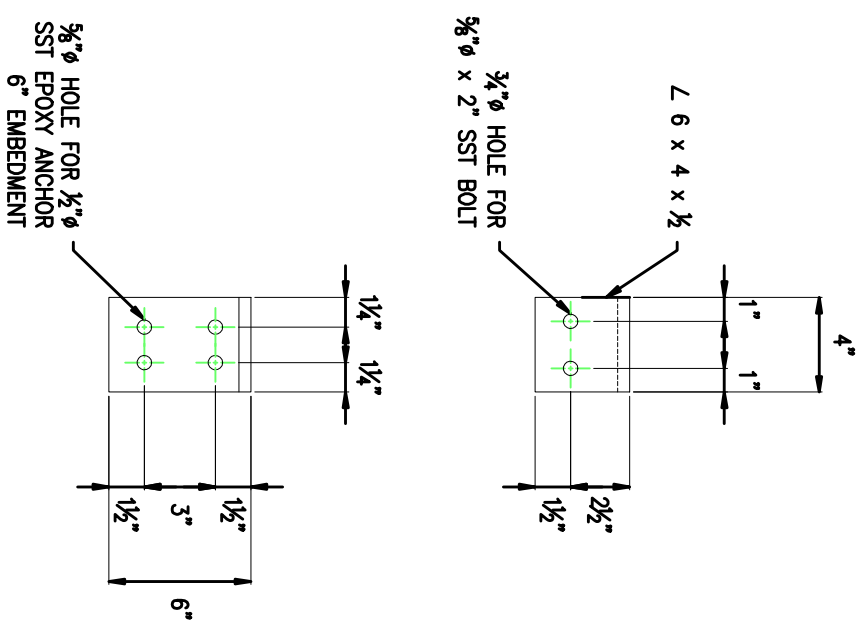
SHEET NUMBER: **SD - 01**



SECTION A



SECTION B



1 Aviation Bush Structures Sections and Detail

CONTRACTOR:
Weaver General Construction Co.
 3679 S. Huron St. Suite 404
 Englewood, CO 80110
 Ph: (303)769-4111 / Fx: (303)769-4310

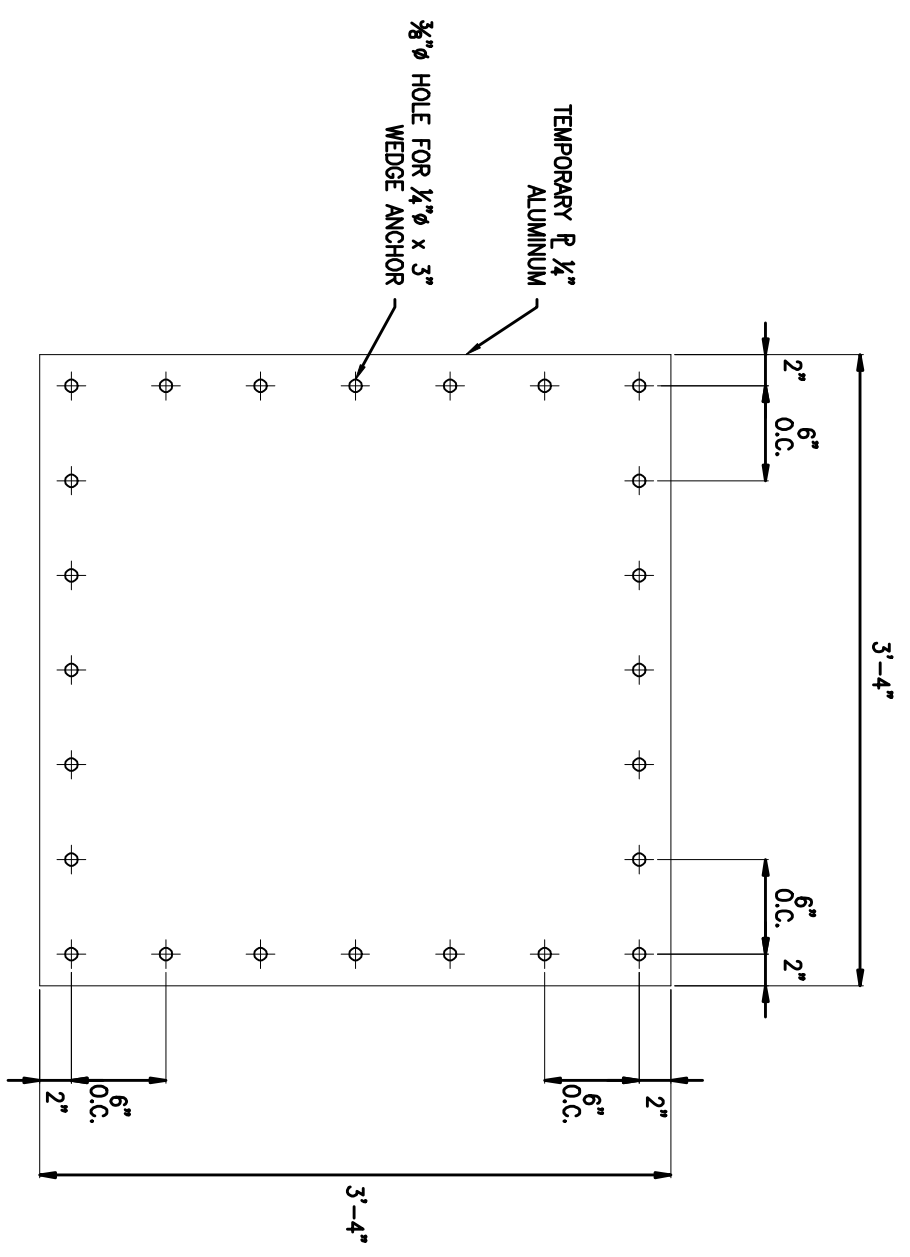
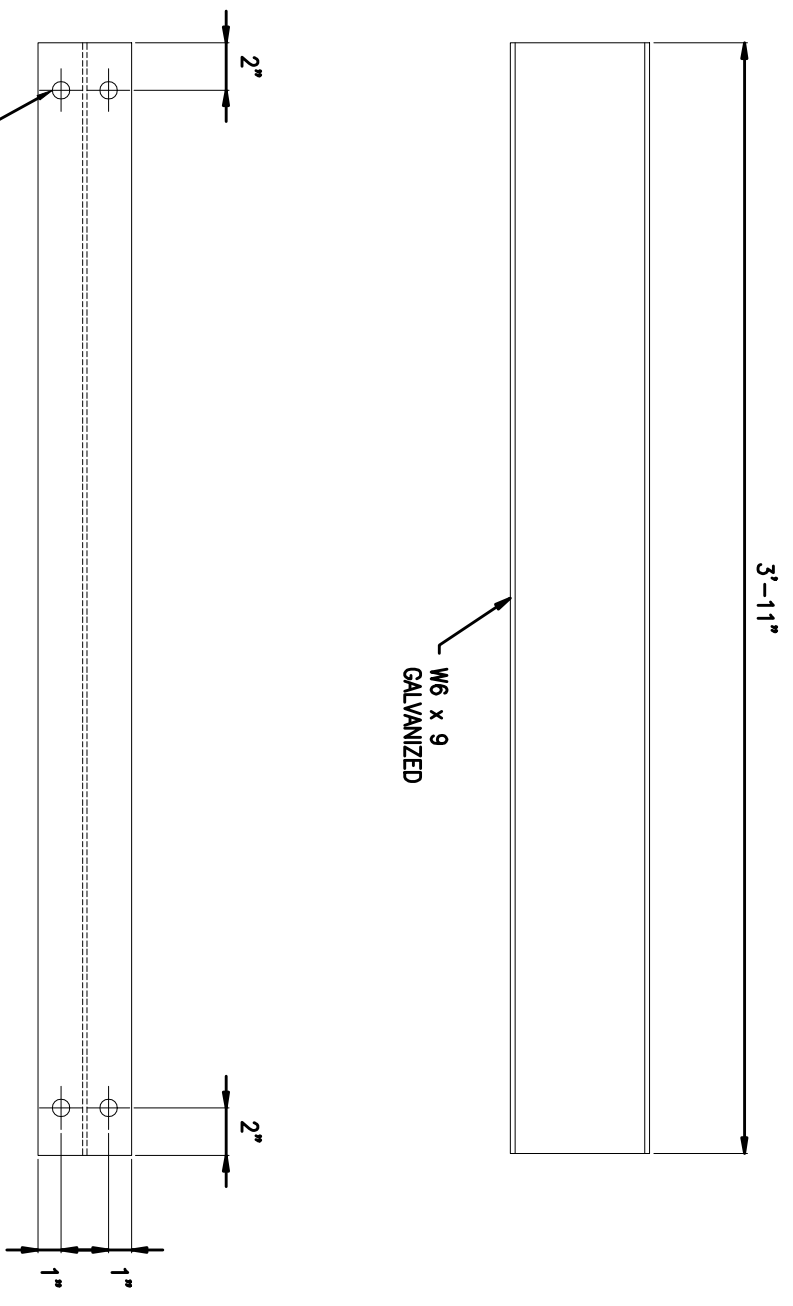
FABRICATOR:
Aviation Fabricators
 14200 E. 140th Ave.
 Englewood, Colorado 80150
 Ph: (303)769-4111 / Fx: (303)769-4310

PROJECT: **HD Thompson Charge Order I**
 TITLE: **Sections and Detail**

Revision:	DATE:	DWG BY: CCA	CHK BY: EDO
1. Added - See Notes #3	01-23-12		
2. Changed bolts and anchors to SST	01-23-12		
3. -	-		
4. -	-		
5. -	-		

SHEET NUMBER: **SD - 02**

1 Aviation Bush Structure Beam Detail & Temporary Plate Detail



CONTRACTOR:
Weaver General Construction Co.
 3679 S. Huron St. Suite 404
 Englewood, CO 80110
 Ph: (303)769-4111 / Fx: (303)769-4310

FABRICATOR:
Aradon Fabricators
 14220 E. 142nd Ave.
 Englewood, Colorado 80151
 Ph: (303)769-4111 / Fx: (303)769-4310

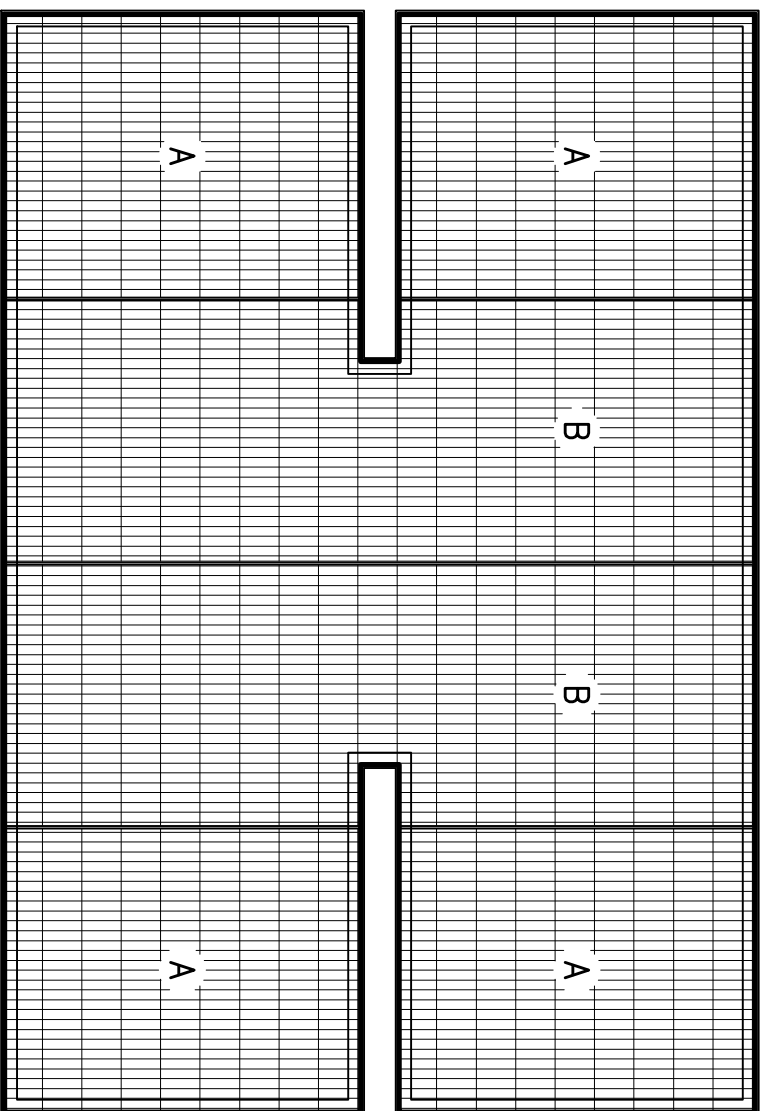
PROJECT: **HD Thompson Charge Order I**
 TITLE: **Support Beam Detail & Temporary Plate**

Revision:

1.	Changed bolts to SST	01-2-12
2.	-	-
3.	-	-
4.	-	-
5.	-	-

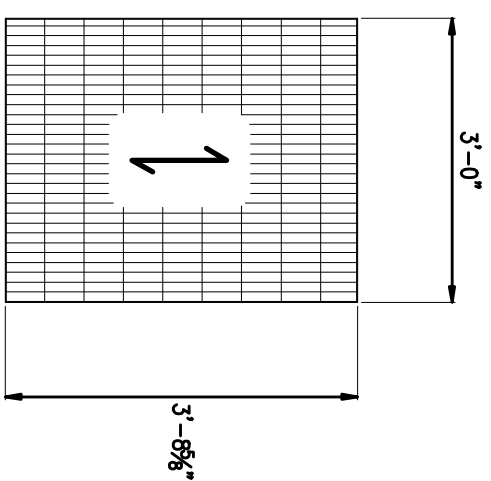
DWG BY: CCA | CHK BY: EDO
 DATE: **JAN 19 2012**
 SHEET NUMBER: **SD - 03**

1 Aviation Booth Structure Grating Plan



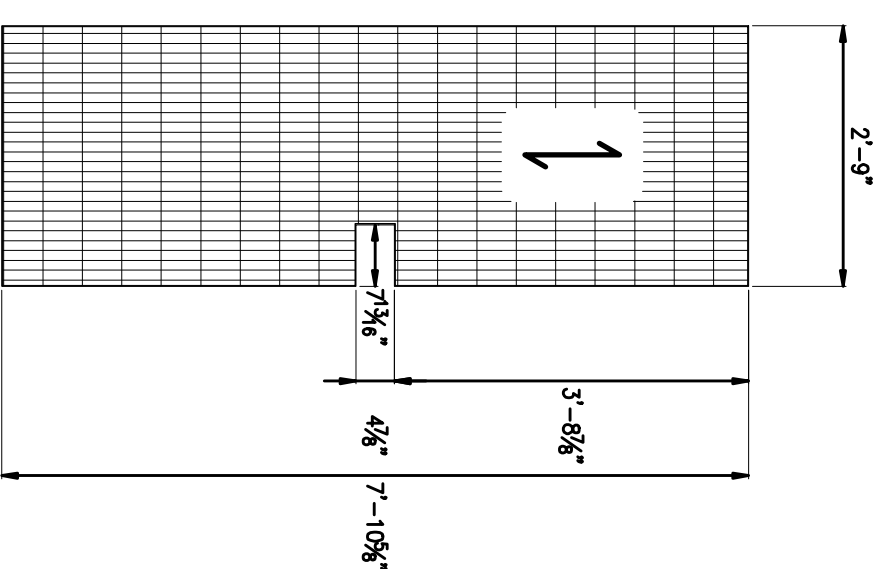
GRATING PLAN

NOTE: PENETRATIONS MUST BE MADE IN THE GRATING TO ACCOMMODATE THE SLIDE GATES AFTER FIELD MEASUREMENT.



(A)
(4X)

1 1/2" I-BAR GRATE
(19 SI 4)
ALUMINUM



(B)
(2X)

1 1/2" I-BAR GRATE
(19 SI 4)
ALUMINUM

CONTRACTOR:
Weaver General Construction Co.
3679 S. Huron St. Suite 404
Englewood, CO 80110
Ph: (303)769-4111 / Fx: (303)769-4310

FABRICATOR:
Ameson Fabricators
1620 E. 16th Ave.
Boulder, Colorado 80501
Ph: (303)440-5555 / Fx: (303)440-5555

PROJECT: **HD Thompson Charge Order I**
TITLE: Grating

Revision:	DATE:
1. Embed angle changed to 1 3/4 x 1 3/4 x 1/4 02-01-12	
2. -	-
3. -	-
4. -	-
5. -	-

DWG. BY: CCA CHK. BY: EDO
DATE: **JAN 19 2012**
SHEET NUMBER: **SD - 04**