



# Weaver

CONSTRUCTION MANAGEMENT

3679 S Huron Street, Suite 404 Englewood, Colorado 80110

Phone: (303) 789-4111 FAX: (303) 789-4310

## SUBMITTAL TRANSMITTAL

April 5, 2012

**Submittal No: 05500-012.A**

PROJECT: **Harold Thompson Regional WRF**  
Birdsall Rd.  
Fountain, CO 80817  
Job No. 2908

ENGINEER: **GMS, Inc.**  
611 No. Weber St., #300  
Colorado Springs, CO 80903  
719-475-2935 Roger Sams

OWNER: **Lower Fountain Metropolitan  
Sewage Disposal District**  
901 S. Santa Fe Ave.  
Fountain, CO 80817  
719-382-5303 James Heckman

CONTRACTOR: **CSM Industrial Contractors**  
614 Cliff Street  
Westcliffe, CO 81252  
719-783-2867

SUBJECT: Resubmittal of Aeration Basin Splitter Structure

SPEC SECTION: 05500 - Misc Metals

PREVIOUS SUBMISSION DATES: 3/28/12

DEVIATIONS FROM SPEC: \_\_\_ YES X NO

CONTRACTOR'S STAMP: This submittal has been reviewed by Weaver Construction Management and, unless indicated otherwise, has been found to be in conformance with the intent of the contract documents.

Contractor's Stamp:

Engineer's Stamp:

Date: 4/5/12

Reviewed by: Tyler Ammerman

(x) Reviewed Without Comments

( ) Reviewed With Comments

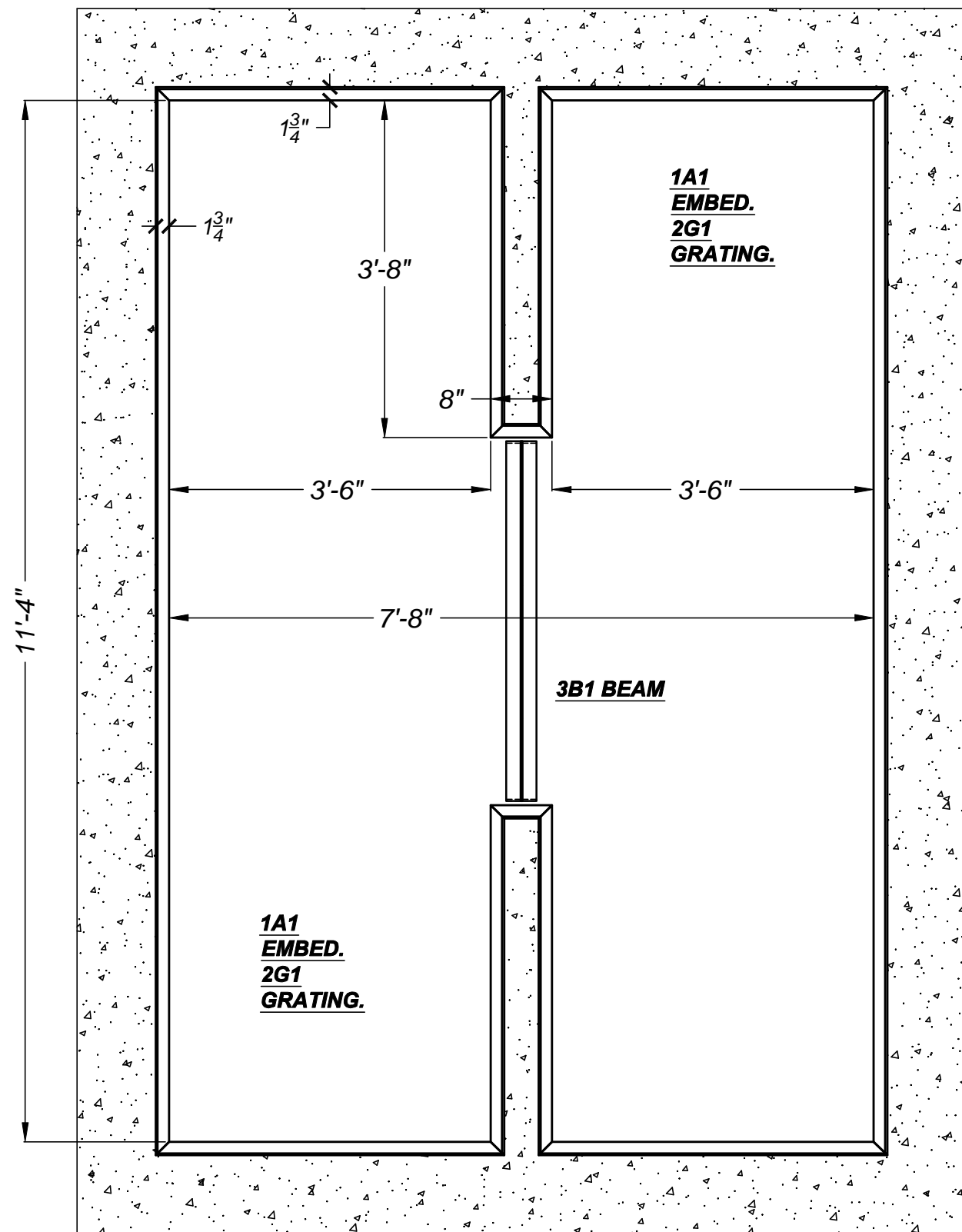
ENGINEER'S  
COMMENTS:



# FOUNTAIN: AB Splitter Structure

SHOP DRAWINGS 03/26/12, Revision 1 dated 04/05/12

SHEET E1 - Plan View - AB Splitter Structure	
SHEET S1 - Details - AB Splitter Structure Misc. Metals, Embeds	
SHEET S2 - Details - AB Splitter Structure Misc. Metals, Grating	
SHEET S3 - Details - AB Splitter Structure Misc. Metals, Beam, Angles, Plate	



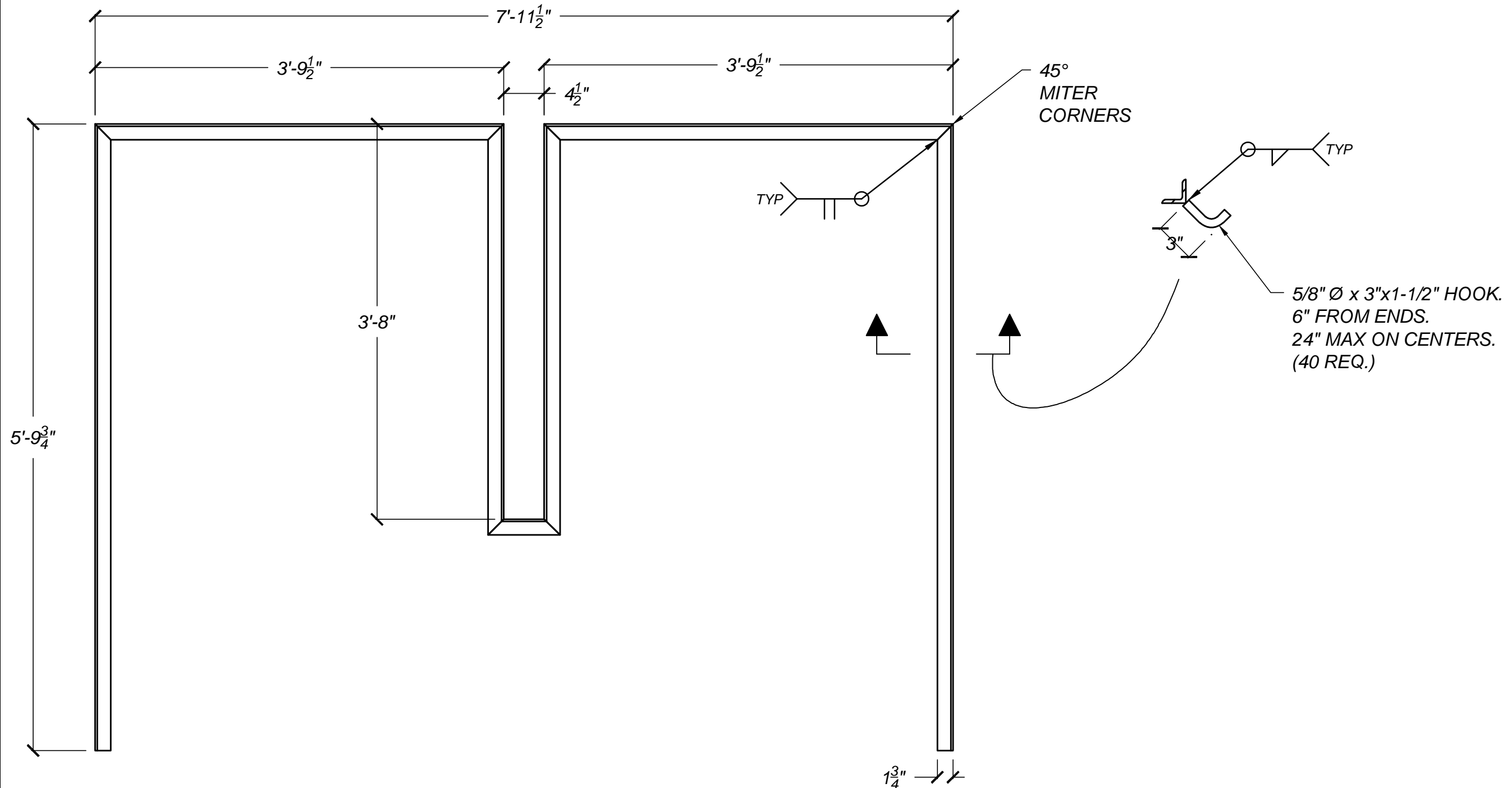
PLAN VIEW --- AERATION BASIN SPLITTER - GRATING EMBED ANGLE

PROGRESS PRINT  
Not Valid for Construction Until  
Stamped



(719) 783-2867

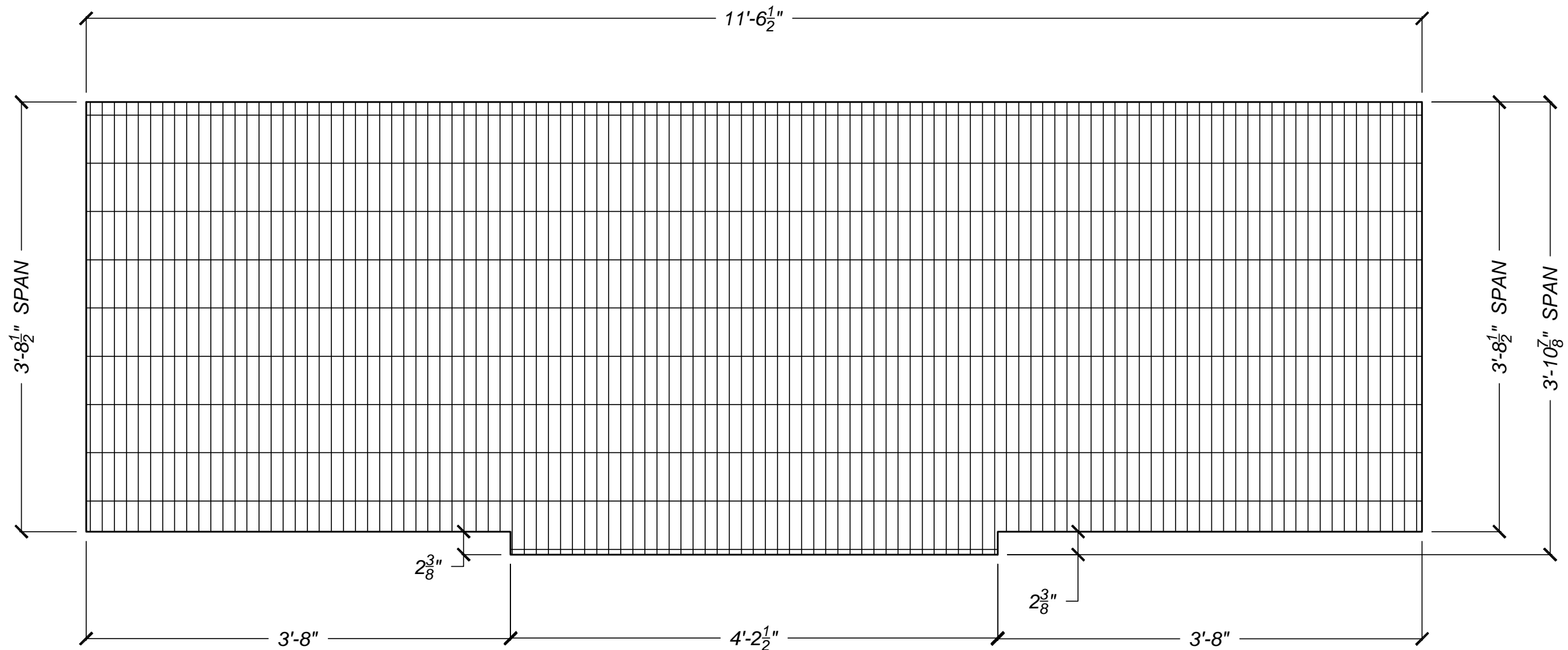
Project	HAROLD D. THOMPSON REGIONAL RECLAMATION FACILITY	Date	3/26/2012
Area	LOWER FOUNTAIN METROPOLITAN SEWEGE DISPOSAL DISTRICT	Drwn By	DWN
Detail	PLAN VIEW --- AERATION BASIN SPLITTER STRUCTURE	Rev: 1	Date: 4/05/2012
Ref Dwg	NOTED	Scale	NONE
		Sheet	E-1



**TWO --- 1-3/4"x1-3/4"x1/4" ALUMINUM ANGLE EMBEDS --- 1A1**

6061-T6 ALUMINUM

PROGRESS PRINT Not Valid for Construction Until Stamped	 (719) 783-2867	Project HAROLD D. THOMPSON REGIONAL RECLAMATION FACILITY	Date 3/26/2012
		Area LOWER FOUNTAIN METROPOLITAN SEWEGE DISPOSAL DISTRICT	Drwn By DWN
		Detail DETAILS --- AERATION BASIN SPLITTER STRUCTURE MISC. METALS	Rev: 1 Date: 4/05/2012
		Ref Dwg NOTED Scale NONE	Sheet S-1



**TWO SETS --- 1-1/2" x 1/4" ALUMINUM I-BAR GRATING --- 2G1**

6063-T6 ALUMINUM.

**SHOP & FIELD NOTE:**

PROTECT ALL ALUMINUM IN CONTACT WITH STEEL OR CONCRETE.  
 PROTECTIVE COATING TO BE SHERWIN WILLIAMS COAL TAR.

**SHOP NOTE:**

PROVIDE M-CLIPS & SS304 SCREWS TO ATTACH GRATING, PER MANUFACTURERS RECOMMENDATIONS.

**NOTE:**

TWO SETS OF PANELS ARE REQUIRED.  
 GRATING PANELS WILL BE PROVIDED IN STANDARD GRATING PANEL WIDTHS & ONE CUT TO SIZE PANEL TO EQUAL 11'- 6 1/2".  
 BAND GRATING.  
 DIMENSIONS SHOWN HERE: ALLOW 1/4" CLEARANCE FROM ANGLE.

**NOTE:**

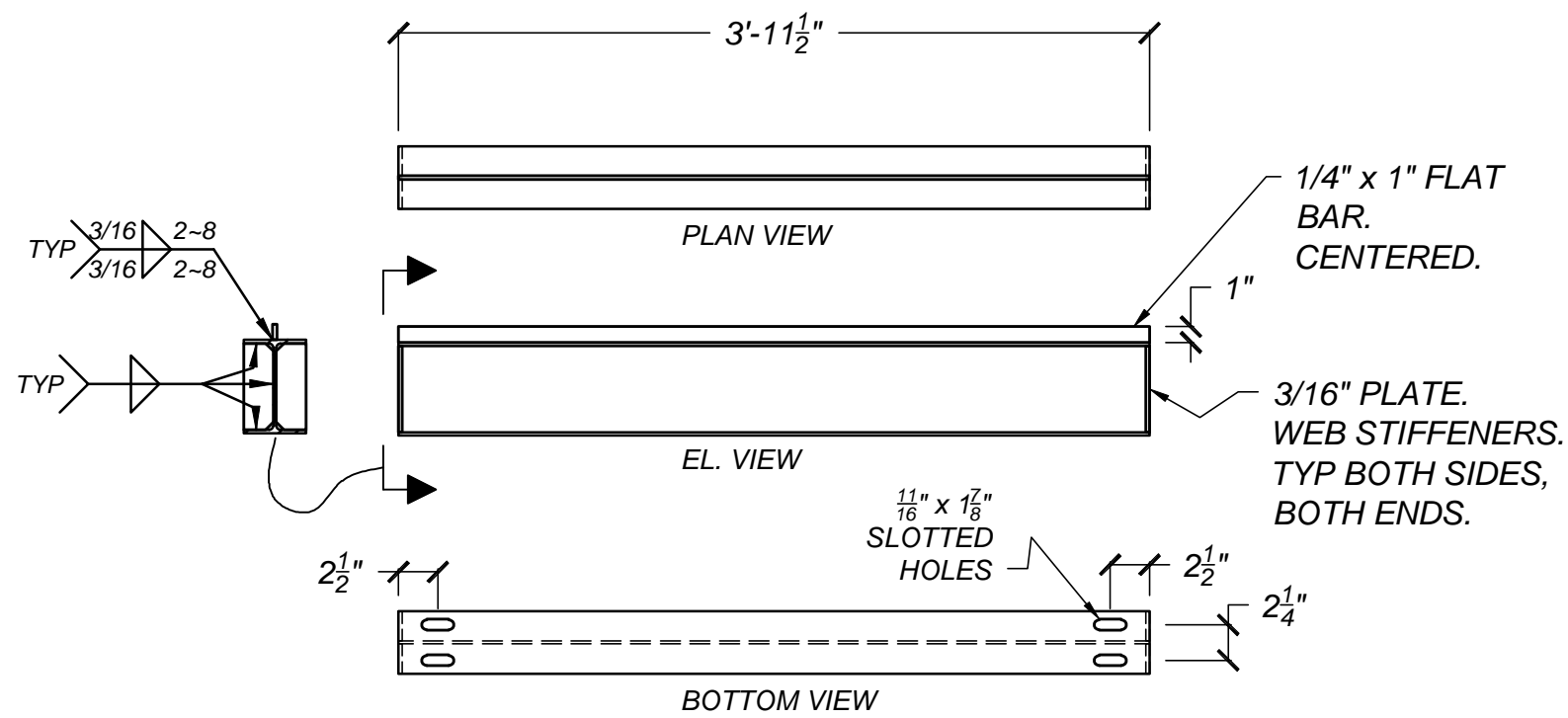
PER WEAVER SUBMITTAL 05500-12 NOTE, "OPENINGS IN GRATING FOR SLIDE GATES WILL BE FIELD MEASURED PRIOR TO FABRICATION."

PROGRESS PRINT  
 Not Valid for Construction Until  
 Stamped



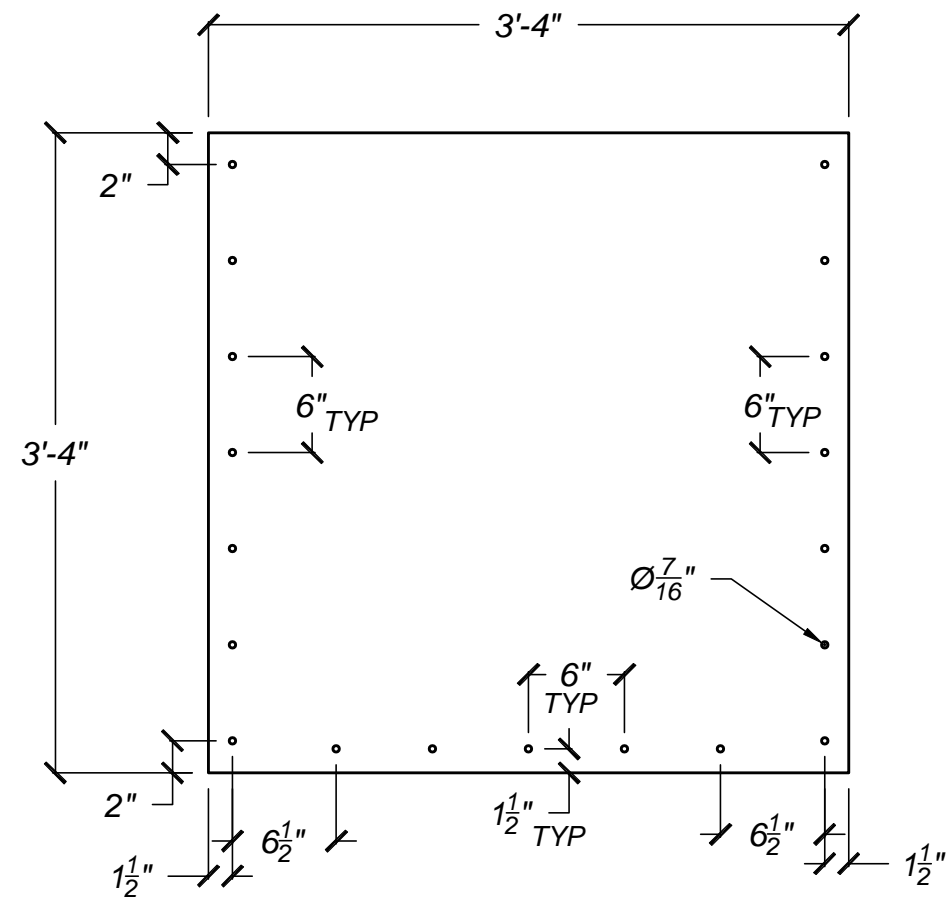
(719) 783-2867

Project	HAROLD D. THOMPSON REGIONAL RECLAMATION FACILITY	Date	3/26/2012
Area	LOWER FOUNTAIN METROPOLITAN SEWEGE DISPOSAL DISTRICT	Drwn By	DWN
Detail	DETAILS --- AERATION BASIN SPLITTER STRUCTURE MISC. METALS	Rev: 1	Date: 4/05/2012
Ref Dwg	NOTED	Scale	NONE
Sheet			S-2



**ONE--- W6x9 BEAM --- 3B1 (GALV.)**

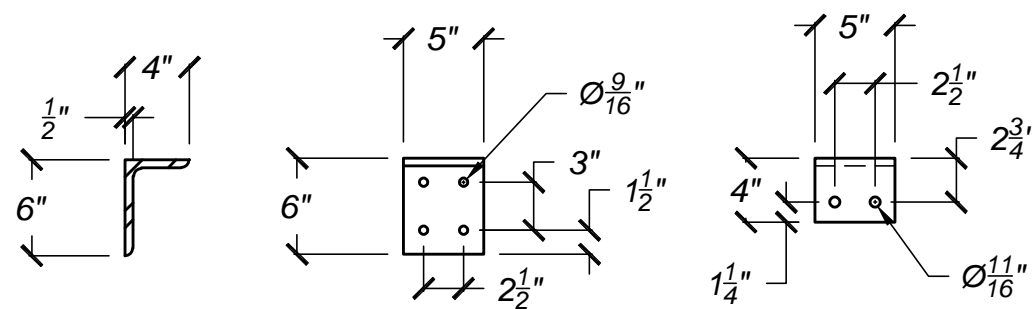
ASTM A992



**ONE --- 1/4\"/>**

6061-T6 ALUMINUM

BOLT LIST: FOR 3P1.  
(19 REQ.) 3/8\"/>



**TWO--- 6\"/>**

SS 304 STAINLESS

BOLT LIST: FOR 3A1.

( 4 REQ.) 5/8\"/>

(8 REQ.) 1/2\"/>

HILTI HY-150 ADHESIVE. 5\"/>

PROGRESS PRINT  
Not Valid for Construction Until  
Stamped



(719) 783-2867

Project	HAROLD D. THOMPSON REGIONAL RECLAMATION FACILITY	Date	3/26/2012
Area	LOWER FOUNTAIN METROPOLITAN SEWEGE DISPOSAL DISTRICT	Drwn By	DWN
Detail	DETAILS --- AERATION BASIN SPLITTER STRUCTURE MISC. METALS	Rev: 1	Date: 4/05/2012
Ref Dwg	NOTED	Scale	NONE
Sheet			<b>S-3</b>