



# Weaver

CONSTRUCTION MANAGEMENT

3679 S Huron Street, Suite 404 Englewood, Colorado 80110

Phone: (303) 789-4111 FAX: (303) 789-4310

## SUBMITTAL TRANSMITTAL

March 28, 2012

**Submittal No: 05500-012**

PROJECT: **Harold Thompson Regional WRF**  
Birdsall Rd.  
Fountain, CO 80817  
Job No. 2908

ENGINEER: **GMS, Inc.**  
611 No. Weber St., #300  
Colorado Springs, CO 80903  
719-475-2935 Roger Sams

OWNER: **Lower Fountain Metropolitan  
Sewage Disposal District**  
901 S. Santa Fe Ave.  
Fountain, CO 80817  
719-382-5303 James Heckman

CONTRACTOR: **CSM Industrial Contractors**  
614 Cliff Street  
Westcliffe, CO 81252  
719-783-2867

SUBJECT: Aeration Basin Splitter Structure

SPEC SECTION: 05500 - Misc Metals

PREVIOUS SUBMISSION DATES:

DEVIATIONS FROM SPEC: \_\_\_ YES X NO

CONTRACTOR'S STAMP: This submittal has been reviewed by Weaver Construction Management and, unless indicated otherwise, has been found to be in conformance with the intent of the contract documents.

Contractor's Stamp:

Date: 3/28/12

Reviewed by: Tyler Ammerman

( ) Reviewed Without Comments

(X) Reviewed With Comments

Engineer's Stamp:

ENGINEER'S  
COMMENTS: \_\_\_\_\_



**Project: HDTWRF Project**

**Location: Fountain, CO**

**Supplier: CSM**

**Date: 3/28/12**

**Submittal for: 05500-012 – Aeration Basin Splitter Structure Misc. Metals**

**Submittal Review Comments:**

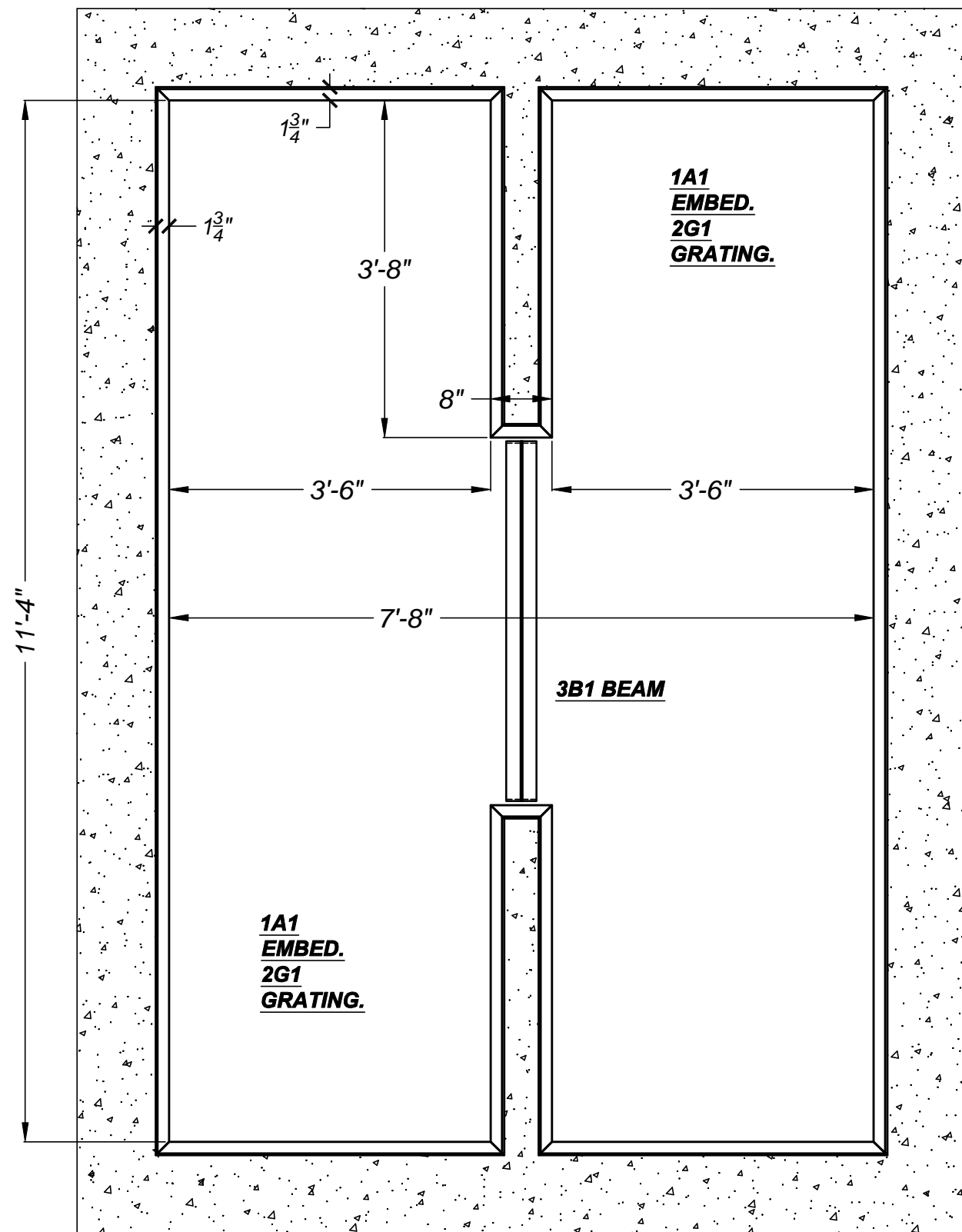
- 1. Openings in grating for slide gates will be field measured prior to fabrication of grating.**



# FOUNTAIN: AB Splitter Structure

SHOP DRAWINGS 03/26/12

SHEET E1 - Plan View - AB Splitter Structure	
SHEET S1 - Details - AB Splitter Structure Misc. Metals, Embeds	
SHEET S2 - Details - AB Splitter Structure Misc. Metals, Grating	
SHEET S3 - Details - AB Splitter Structure Misc. Metals, Beam, Angles, Plate	



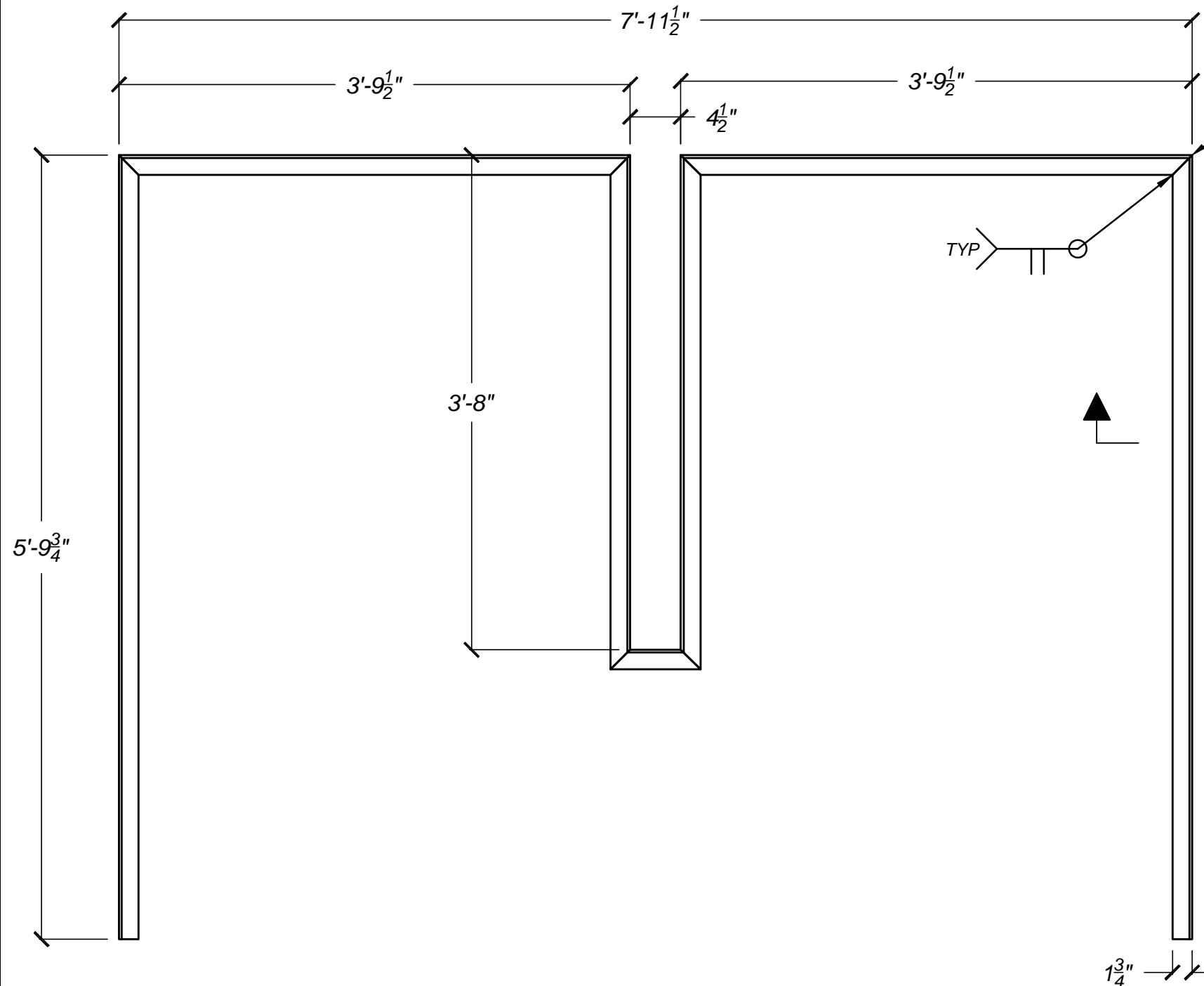
PLAN VIEW --- AERATION BASIN SPLITTER - GRATING EMBED ANGLE

PROGRESS PRINT  
Not Valid for Construction Until  
Stamped

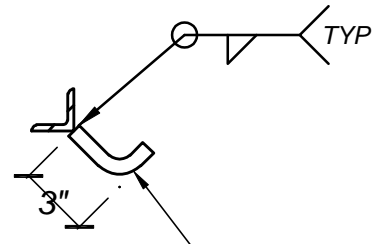


(719) 783-2867

Project	HAROLD D. THOMPSON REGIONAL RECLAMATION FACILITY	Date	3/26/2012
Area	LOWER FOUNTAIN METROPOLITAN SEWEGE DISPOSAL DISTRICT	Drwn By	DWN
Detail	PLAN VIEW --- AERATION BASIN SPLITTER STRUCTURE	Rev:	Date:
Ref Dwg	NOTED	Scale	NONE
		Sheet	E-1



45°  
MITER  
CORNERS



5/8" Ø x 3"x1-1/2" HOOK.  
6" FROM ENDS.  
24" MAX ON CENTERS.  
(40 REQ.)

**NOTE TO ENGINEER:**

PLEASE VERIFY: AN 1-3/4" x 1-3/4" x 1/4" ANGLE HAS BEEN DETAILED HERE. THE NOTE ON 4/DL-3 STATES, "SIZE THE ANGLE SO TOP OF GRATING IS FLUSH". DETAIL 4/DL-3 ALSO HAS A 2" MIN ON THE BOTTOM LEG. 1-3/4" WILL PROVIDE A GRATING BEARING OF 1" (IF OFFSET) & 1-1/4" (IF CENTERED.)

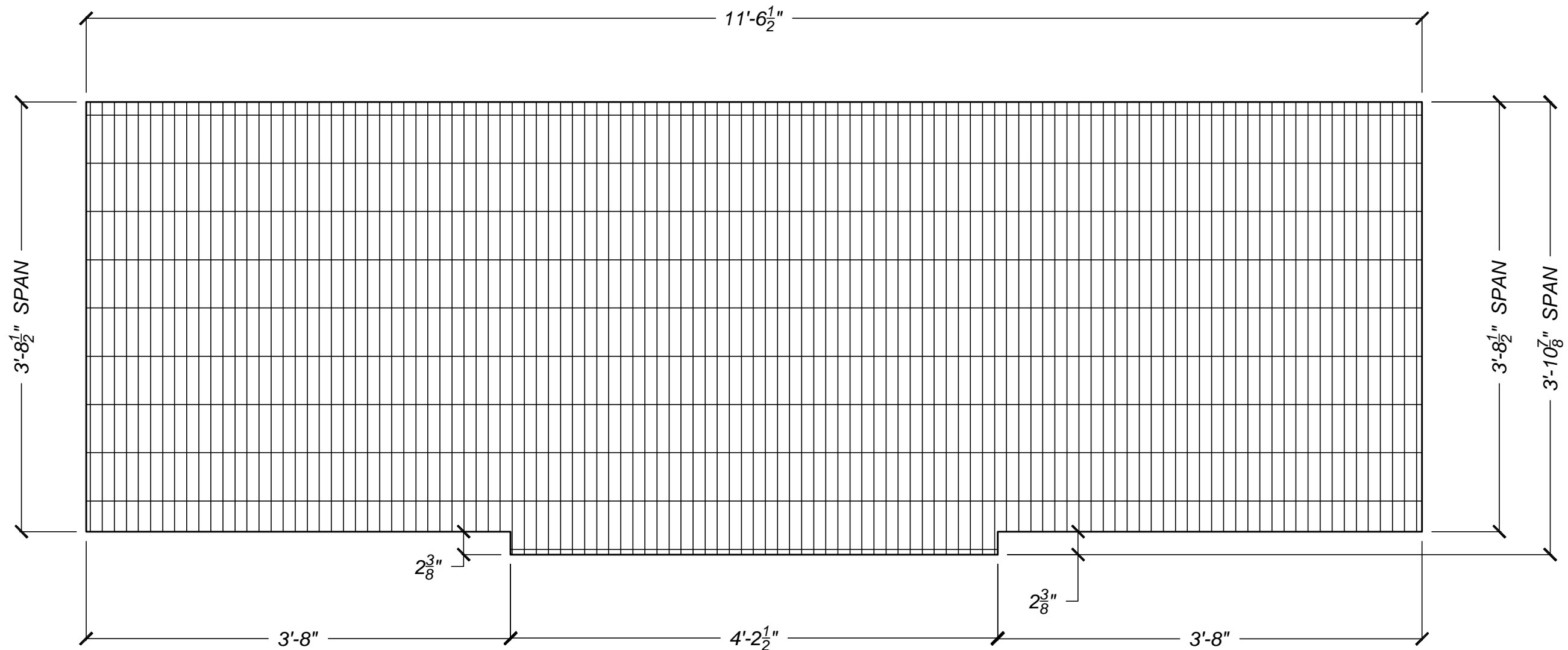
NOTE: THE GRATING IS DETAILED TO HAVE A 1/4" CLEARANCE ON ANGLE SIDES.

PLEASE VERIFY: WELD DETAILS ARE ASSUMED?

**TWO --- 1-3/4"x1-3/4"x1/4" ALUMINUM ANGLE EMBEDS --- 1A1**

6061-T6 ALUMINUM

PROGRESS PRINT Not Valid for Construction Until Stamped	 (719) 783-2867	Project	HAROLD D. THOMPSON REGIONAL RECLAMATION FACILITY	Date	3/26/2012
		Area	LOWER FOUNTAIN METROPOLITAN SEWEGE DISPOSAL DISTRICT	Drwn By	DWN
		Detail	DETAILS --- AERATION BASIN SPLITTER STRUCTURE MISC. METALS	Rev:	
		Ref Dwg	NOTED	Scale	NONE



**TWO SETS --- 1-1/2" x 1/4" ALUMINUM I-BAR GRATING --- 2G1**

6063-T6 ALUMINUM.

NOTE:  
 TWO SETS OF PANELS ARE REQUIRED.  
 GRATING PANELS WILL BE PROVIDED IN STANDARD GRATING PANEL WIDTHS & ONE CUT TO SIZE PANEL TO EQUAL 11'- 6 1/2".  
 BAND GRATING.  
 DIMENSIONS SHOWN HERE: ALLOW 1/4" CLEARANCE FROM ANGLE.

SHOP & FIELD NOTE:

PROTECT ALL ALUMINUM IN CONTACT WITH STEEL OR CONCRETE.  
 PROTECTIVE COATING TO BE SHERWIN WILLIAMS COAL TAR.

SHOP NOTE:

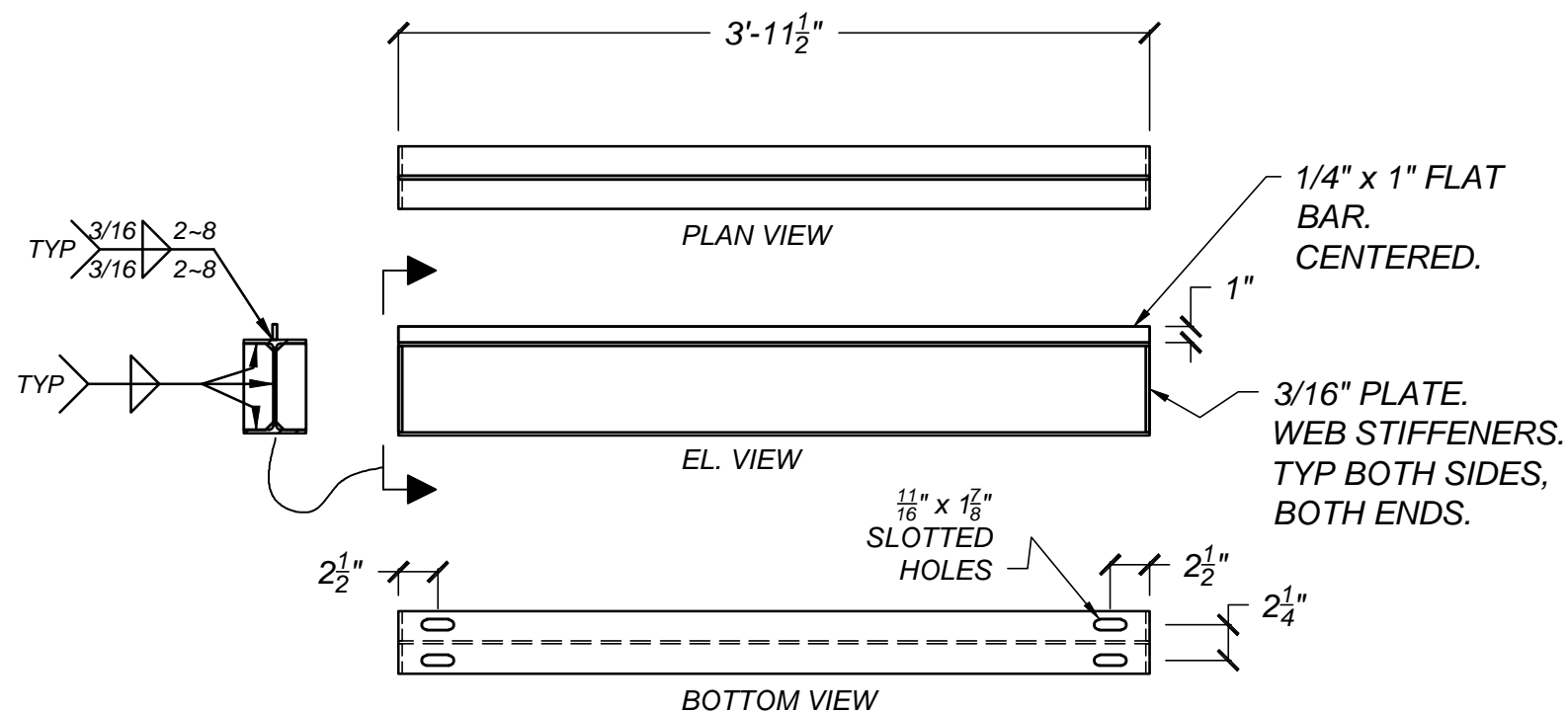
PROVIDE M-CLIPS & SS304 SCREWS TO ATTACH GRATING, PER MANUFACTURERS RECOMONDATIONS.

PROGRESS PRINT  
 Not Valid for Construction Until  
 Stamped



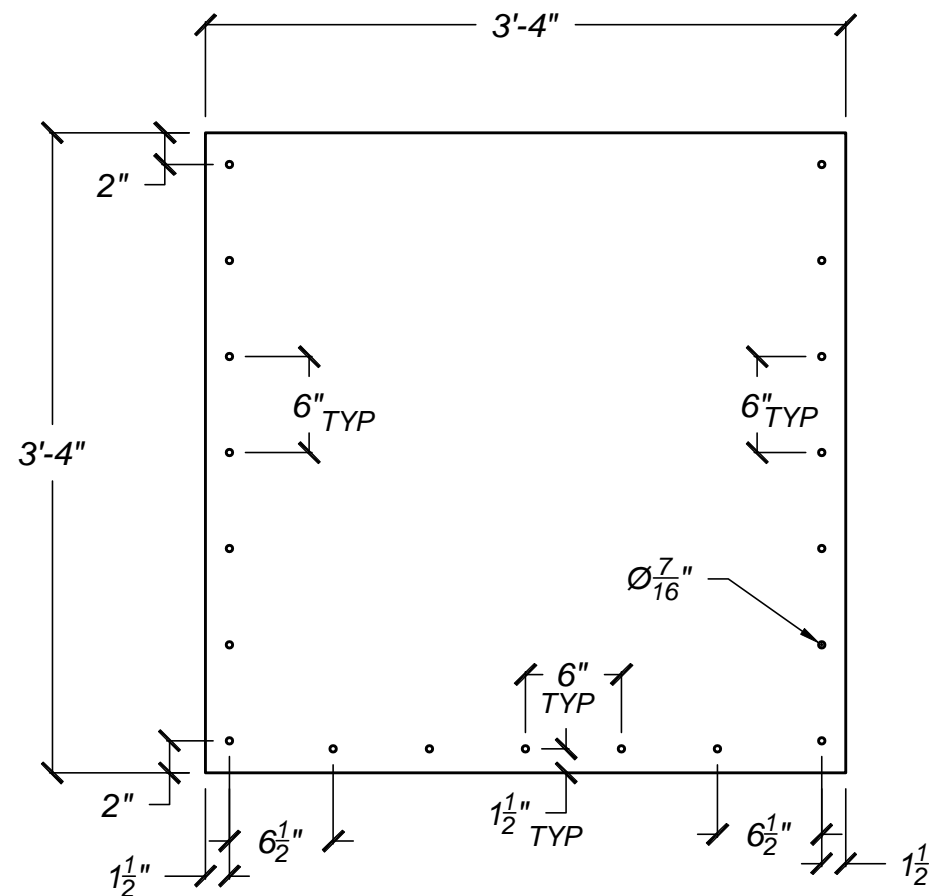
(719) 783-2867

Project	HAROLD D. THOMPSON REGIONAL RECLAMATION FACILITY	Date	3/26/2012
Area	LOWER FOUNTAIN METROPOLITAN SEWEGE DISPOSAL DISTRICT	Drwn By	DWN
Detail	DETAILS --- AERATION BASIN SPLITTER STRUCTURE MISC. METALS	Rev:	
Ref Dwg	NOTED	Date:	
Scale	NONE	Sheet	S-2



**ONE--- W6x9 BEAM --- 3B1 (GALV.)**

ASTM A992

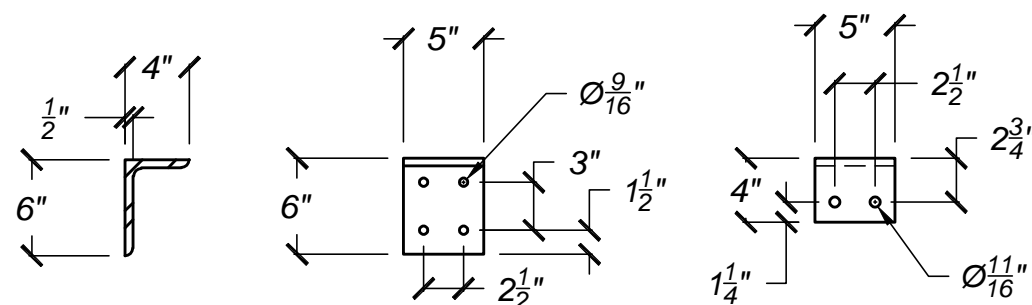


**ONE --- 1/4\"/>**

6061-T6 ALUMINUM

BOLT LIST: FOR 3P1.

(19 REQ.) 3/8\"/>



**TWO--- 6\"/>**

ASTM A36

BOLT LIST: FOR 3A1.

( 4 REQ.) 5/8\"/>

(8 REQ.) 1/2\"/>

HILTI HY-150 ADHESIVE. 5\"/>

NOTE TO ENGINEER:

PLEASE VERIFY: SUPPORT BEAM 3B1, IS PER C/G-27. BEAM SIZE HAS BEEN INCREASED TO W6x9. W6x8.5 IS NOT A STOCK SIZE FROM THE SUPPLIER.

PROGRESS PRINT  
Not Valid for Construction Until  
Stamped



(719) 783-2867

Project	HAROLD D. THOMPSON REGIONAL RECLAMATION FACILITY	Date	3/26/2012
Area	LOWER FOUNTAIN METROPOLITAN SEWEGE DISPOSAL DISTRICT	Drwn By	DWN
Detail	DETAILS --- AERATION BASIN SPLITTER STRUCTURE MISC. METALS	Rev:	
Ref Dwg	NOTED	Date:	
Scale	NONE	Sheet	S-3