



Weaver

CONSTRUCTION MANAGEMENT

3679 S Huron Street, Suite 404 Englewood, Colorado 80110

Phone: (303) 789-4111 FAX: (303) 789-4310

SUBMITTAL TRANSMITTAL

August 29, 2012

WCM Submittal No: 05500-018

PROJECT: **Harold Thompson Regional WRF**
Birdsall Rd.
Fountain, CO 80817
Job No. 2908

ENGINEER: **GMS, Inc.**
611 No. Weber St., #300
Colorado Springs, CO 80903
719-475-2935 Roger Sams

OWNER: **Lower Fountain Metropolitan
Sewage Disposal District**
901 S. Santa Fe Ave.
Fountain, CO 80817
719-382-5303 James Heckman

CONTRACTOR: **CSM Industrial Contractors**
614 Cliff Street
Westcliffe, CO 81252
719-783-2867

SUBJECT: Operations Building Shop Drawings for the Stair Columns and I-Beams

SPEC SECTION: 05500 - Metal Fabrications

PREVIOUS SUBMISSION DATES:

DEVIATIONS FROM SPEC: ___ YES x NO

CONTRACTOR'S STAMP: This submittal has been reviewed by Weaver Construction Management and, unless indicated otherwise, has been found to be in conformance with the intent of the contract documents.

Contractor's Stamp:

Engineer's Stamp:

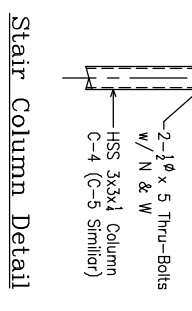
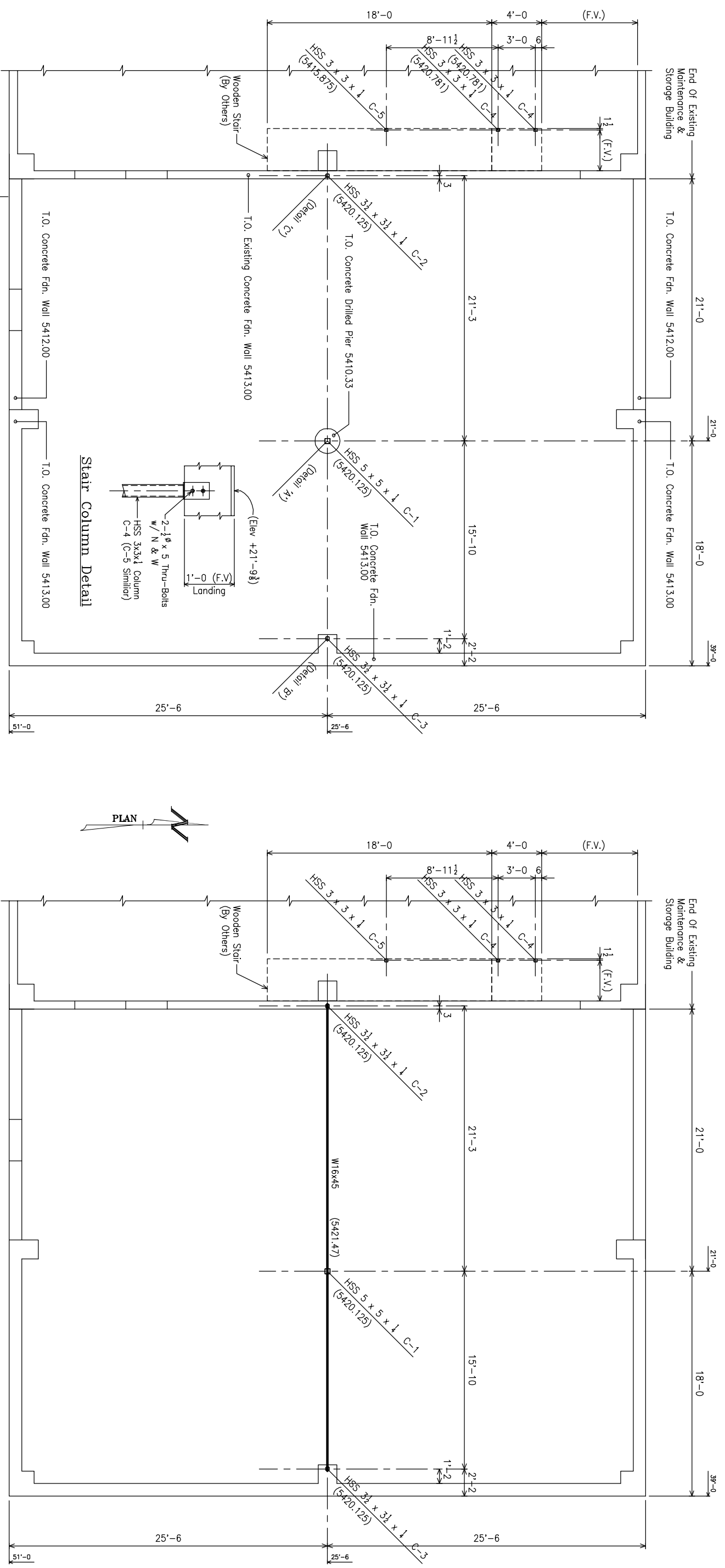
Date: 8/29/12

Reviewed by: Adam Roeder

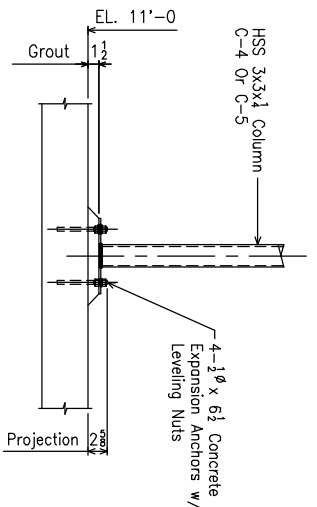
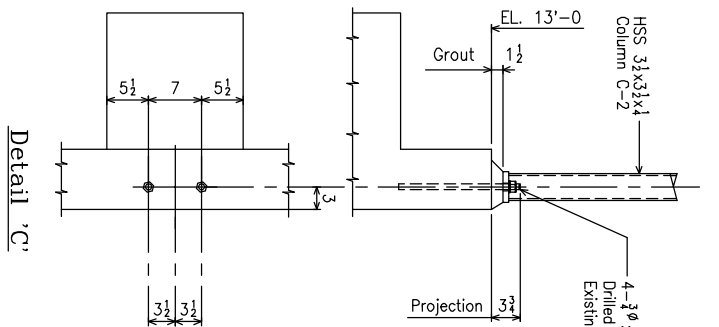
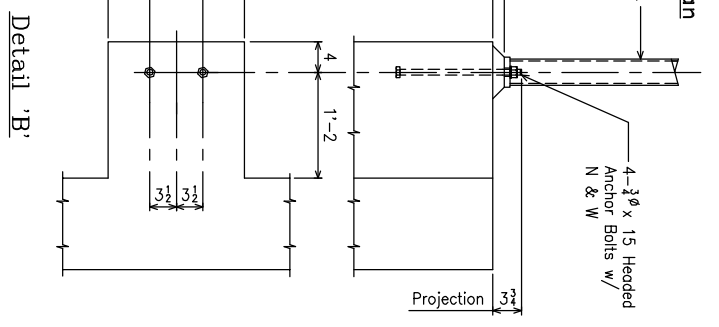
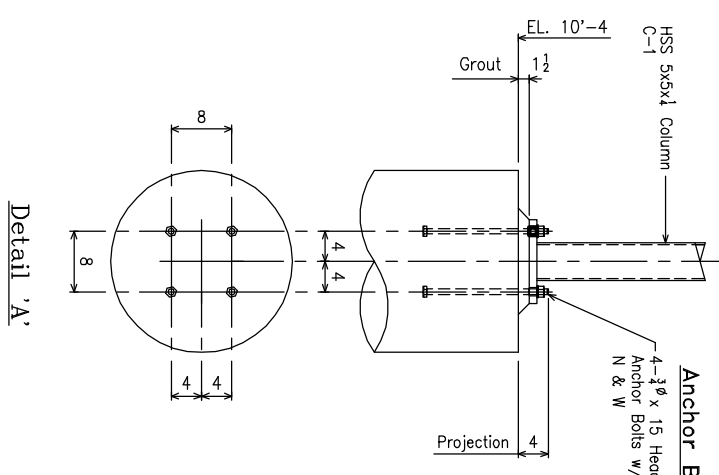
(X) Reviewed Without Comments

() Reviewed With Comments

ENGINEER'S
COMMENTS:



Anchor Bolt & Column Setting Plan



Upper Level Framing Plan

PLAN NOTE
Elevation Top Of Steel Noted (XXXX.XX).

FOR APPROVAL ONLY

REV. No.	DATE	BY	DESCRIPTION

PROJECT		CUSTOMER	
Operations Building Addition H. D. Thompson Regional Water Reclamation Facility		XXXXXX XXXXXX	
DIVISION		DATE	
Division Five Detailing Service 445 D St. (P. O. Box 294) Perrone, Colorado 81240 Tel (719) 372-9411		08/17/12 XX/XX/12	
CHK'D BY		DWG. NO.	
XXX		E-1	

CSM INDUSTRIAL CONSTRUCTORS	
614 Cliff Street Westcliffe, CO 81252 (719) 783-2867	

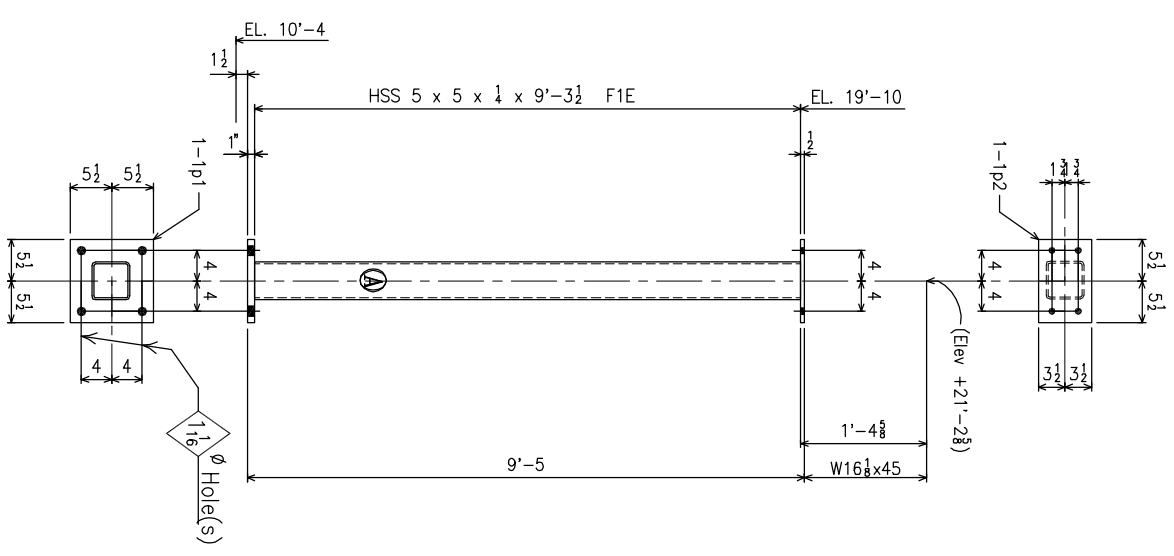
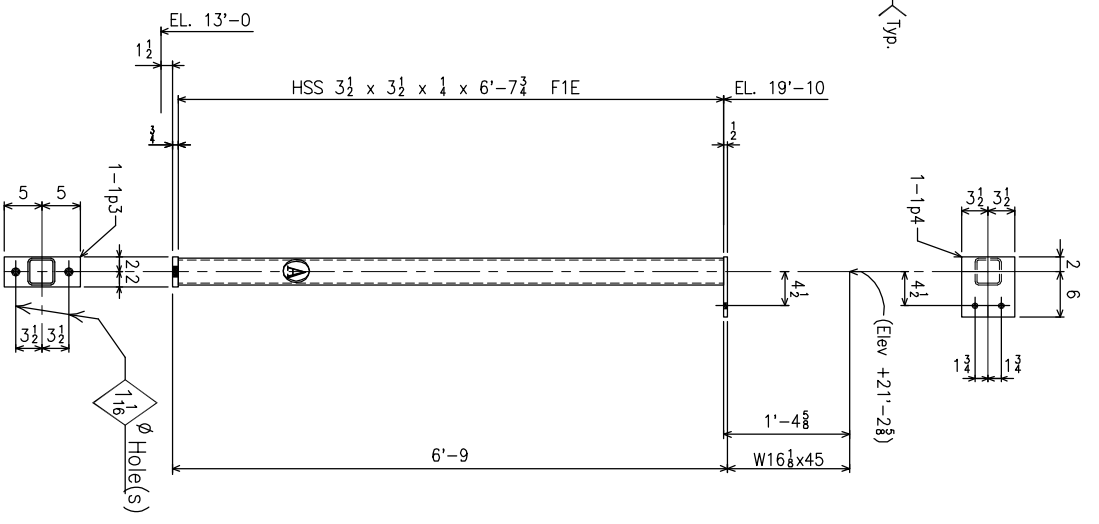
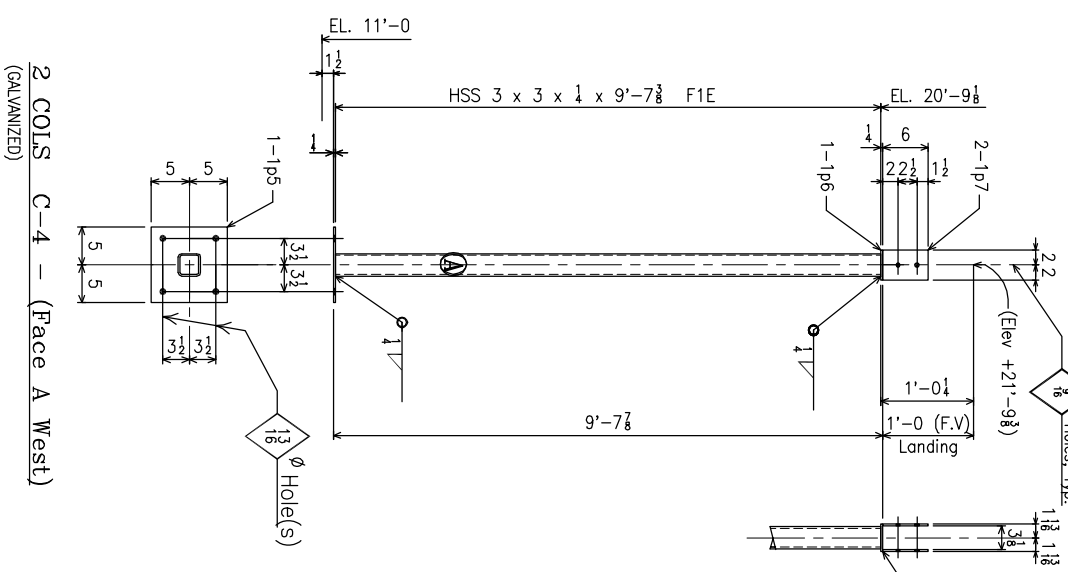
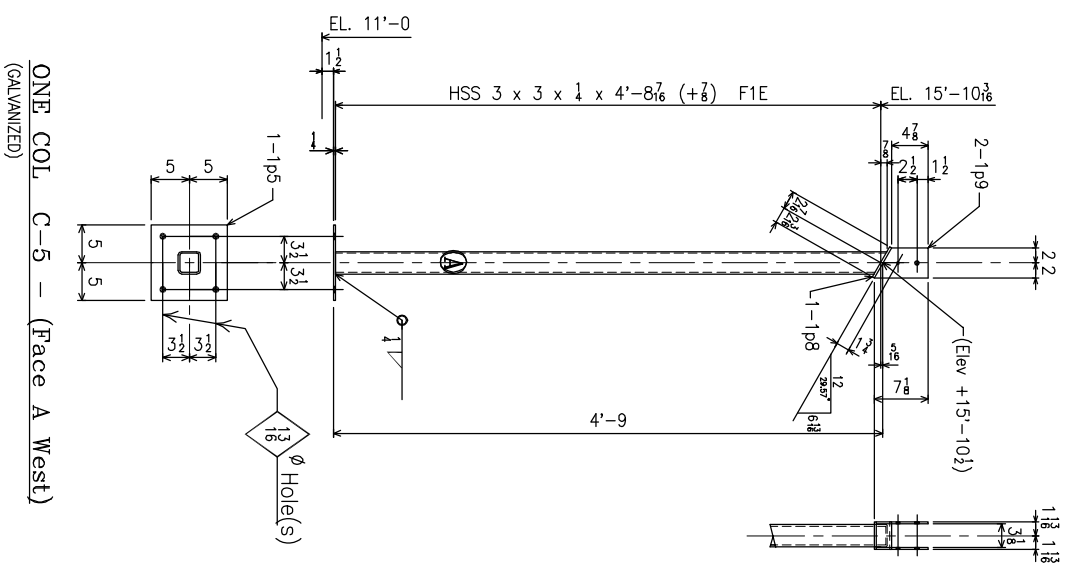
BILL OF MATERIAL

FIELD MARK	SHOP MARK	NO.	SECTION	LENGTH	REMARKS	WT
		C-1				
		1p1	HSS 5 x 5 x 1/4	9'-3 1/2"		145
		1p2	PL 1 x 11	11		34.3
		1p3	PL 1/2 x 7	11		10.9
		C-2				
		1p3	One HSS 3 1/2 x 3 1/2 x 1/4	6'-7 1/2"		70
		1p4	PL 3/4 x 4	10		8.5
		1p4	PL 1/2 x 7	8		7.9
		C-3				
		1p3	One HSS 3 1/2 x 3 1/2 x 1/4	6'-7 1/2"		70
		1p4	PL 3/4 x 4	10		8.5
		1p4	PL 1/2 x 7	8		7.9
		C-4				
		1p5	2 HSS 3 x 3 x 1/4	9'-7 3/8"		169
		1p6	2 PL 1/2 x 10	10		14.2
		1p7	4 PL 1/2 x 3 3/8	4		2.1
		1p7	4 PL 1/2 x 4	6		6.8
		C-5				
		1p5	One HSS 3 x 3 x 1/4	4'-9 3/8"	Bevel Cut 1 End	42
		1p8	1 PL 1/2 x 10	10		7.1
		1p8	1 PL 1/2 x 3 3/8	4 1/2		1.2
		1p9	2 PL 1/2 x 4	7 1/2		4.0

General Notes:

- All steel shapes shall conform to ASTM A58 unless otherwise noted. All wide flange shapes shall conform to ASTM A592, Gr. 50; All steel tube shall conform to ASTM A500, Gr. B; All steel pipe shall conform to ASTM A53 Type E or S, Gr. B; Steel Channel to ASTM A572, Gr. 50.
- All anchor bolts shall conform to ASTM A307 unless otherwise noted; All headed anchor studs shall conform to ASTM A108.
- All welding to be per AWS D1.1. Use E70XX low hydrogen electrodes and welds ground smooth where exposed. All welds not otherwise shown shall be 5/16" thick welds.
- All bolts to be high strength ASTM A325, Type 1 with heavy hex carbon steel nuts and hardened carbon steel washers. All Holes to be 13/16" diameter unless otherwise noted.

FOR APPROVAL ONLY



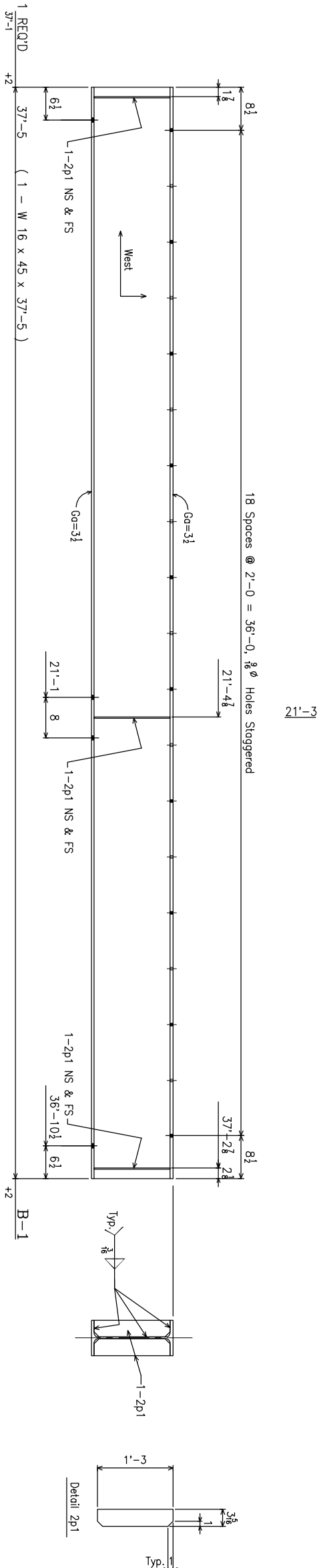
REV. No.	DATE	BY	DESCRIPTION

PROJECT		CUSTOMER	
Operations Building Addition H. D. Thompson Regional Water Reclamation Facility		XXXXXX XXXXXX	
SHOP BOLTS 3/4" A325		DWN. BY DSD	
OPEN HOLES 13/16" UNLESS NOTED		CHK'D BY XXX	
CLEANING PAINT 1-S/C Std. Primer Unless Noted Otherwise		DATE 08/17/12	
Division Five Detailing Service 445 D St. (P.O. Box 294) Perrone, Colorado 81240 Tel (719) 372-9411		JOB NO. XXXXX	
		DWG. NO. ONE	

CSM INDUSTRIAL CONSTRUCTORS
614 Cliff Street
Westcliffe, CO 81252
(719) 783-2867

BILL OF MATERIAL

FIELD MARK	SHOP MARK	NO. PCS	SECTION	LENGTH	REMARKS	WT
B-1	Zp1	One	W16 x 45 PL 1 x 3/8	37'-5"	1'-3 Fitted Stiffener	1684 21.2



8- $\frac{3}{8}$ " x 21 A325 Bolts w/ N & W

- General Notes:**
- All steel shapes shall conform to ASTM A58 unless otherwise noted. All wide flange shapes shall conform to ASTM A592, Gr. 50; All steel tube shall conform to ASTM A500, Gr. B; All steel pipe shall conform to ASTM A53 Type E or S, Gr. B; Steel Channel to ASTM A36, Gr. 50.
 - All anchor bolts shall conform to ASTM A307 unless otherwise noted; All headed anchor studs shall conform to ASTM A108.
 - All welding to be per AWS D1.1. Use E70XX low hydrogen electrodes and welds ground smooth where exposed. All welds not otherwise shown shall be 5/16" fillet welds.
 - All bolts to be high strength ASTM A325, Type 1 with heavy hex carbon steel nuts and hardened carbon steel washers. All Holes to be 13/16" diameter unless otherwise noted.

FOR APPROVAL ONLY

REV. No.	DATE	BY	DESCRIPTION
CSM INDUSTRIAL CONSTRUCTORS			
614 Cliff Street Westcliffe, CO 81252 (719) 783-2867			
PROJECT		CUSTOMER	
Operations Building Addition H. D. Thompson Regional Water Reclamation Facility		XXXXX XXXXX	
PROJECT		JOB NO.	
CLEANING PAINT 1-S/C Std. Primer Unless Noted Otherwise		D5D 08/17/12 XXXXX	
PROJECT		JOB NO.	
Division Five Detailing Service 445 D St. (P. O. Box 294) Perrone, Colorado 81240 Tel (719) 372-9411		CHK'D BY XXX	
PROJECT		JOB NO.	
OPEN HOLES 13/16" ϕ UNLESS NOTED		DWG. NO. 2	