



# Weaver

CONSTRUCTION MANAGEMENT

3679 S Huron Street, Suite 404 Englewood, Colorado 80110

Phone: (303) 789-4111 FAX: (303) 789-4310

## SUBMITTAL TRANSMITTAL

August 27, 2012

**Submittal No: 08301-003.A**

PROJECT: **Harold Thompson Regional WRF**  
Birdsall Rd.  
Fountain, CO 80817  
Job No. 2908

ENGINEER: **GMS, Inc.**  
611 No. Weber St., #300  
Colorado Springs, CO 80903  
719-475-2935 Roger Sams

OWNER: **Lower Fountain Metropolitan  
Sewage Disposal District**  
901 S. Santa Fe Ave.  
Fountain, CO 80817  
719-382-5303 James Heckman

CONTRACTOR: **All Metro Door & Dock Services**  
6445 Downing Street  
Denver, CO 80229  
303-287-1400 Ken Stephens

SUBJECT: Submitting Specified Items for Overhead Sectional Doors for the P&D Building

SPEC SECTION: 08301 - Overhead Sectional Doors

PREVIOUS SUBMISSION DATES: 7/6/12

DEVIATIONS FROM SPEC: \_\_\_ YES  X  NO

CONTRACTOR'S STAMP: This submittal has been reviewed by Weaver Construction Management and, unless indicated otherwise, has been found to be in conformance with the intent of the contract documents.

|   |                          |
|---|--------------------------|
| <p>Contractor's Stamp:</p> <p>Date: 8/27/12<br/>Reviewed by: John Jacob</p> <p>( ) Reviewed Without Comments<br/>(X) Reviewed With Comments</p> <p>ENGINEER'S COMMENTS: _____</p> | <p>Engineer's Stamp:</p> |
|---|--------------------------|



PH 303-789-4111  
FX 303-789-4310

3679 So. Huron St., Suite 404  
Englewood, Colorado 80110

**Project: HDTWRF**

**Submittal No.: 08301-003.A.**

**Location: Fountain, CO**

**Supplier: All Metro Door & Dock Service**

**Date: 8/27/12**

**Submittal 08301-003.A. OH Door for the Pumping & Disinfection Building – By Clopay**

**Additional Submittal Review Comments:**

- 1. WCM has reviewed with the supplier the required track height for allowable clearance over the bridge crane will be 175".**
- 2. Chain hoist has been added.**
- 3. Clopay can meet the 100 mph wind requirement by change the glass lite to 24" x 8" from 24" x 12".**

**End of Review**

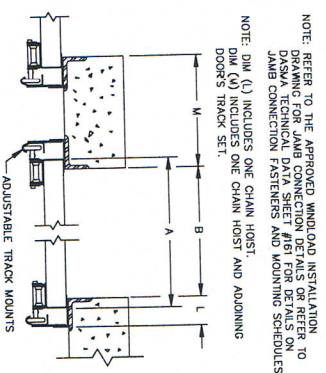
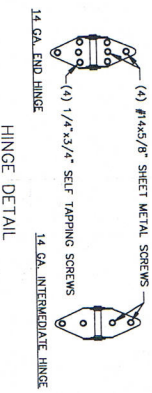
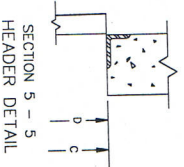
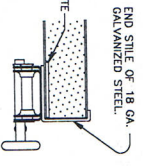
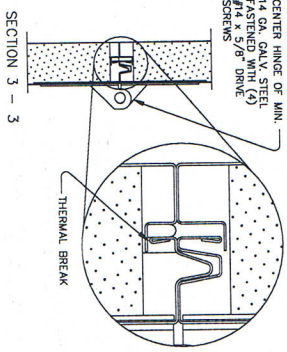
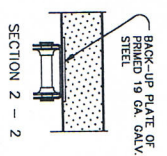
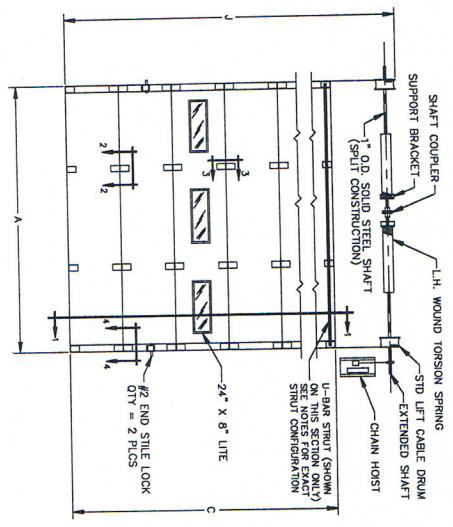
# MODEL 3220 W4

REV DATE DESCRIPTION

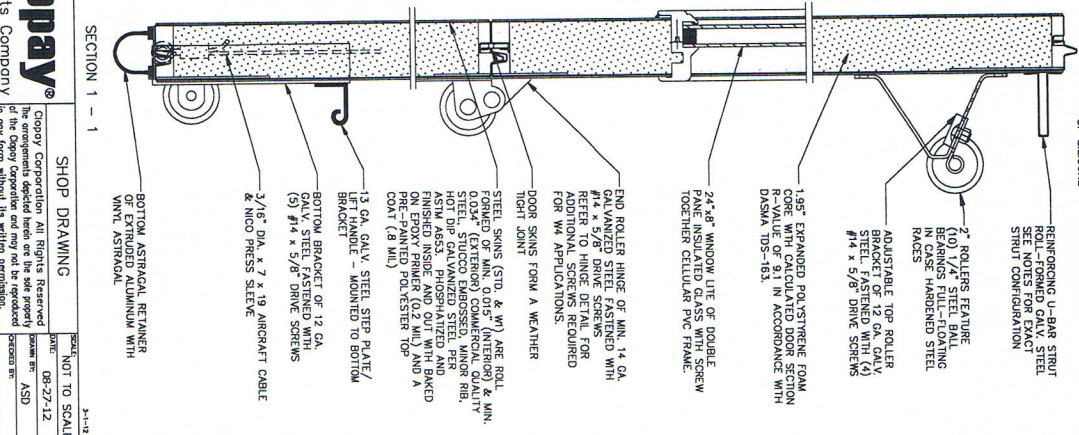
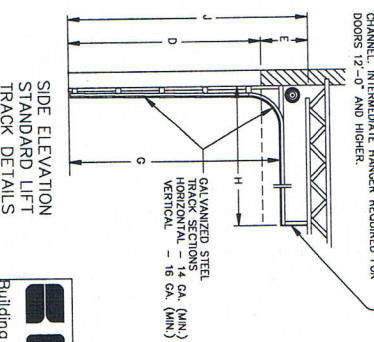
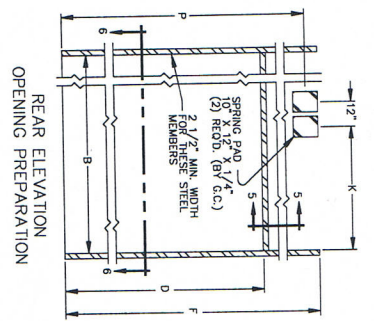
**IMPORTANT:**  
PLEASE REFER TO THE SHOP DRAWING FOR ALL DIMENSIONS AND CORRESPONDENCE. THANK YOU!

**NOTES:**

1. (ONE) DOOR 12'-2" x 14'-0"
2. ACTUAL DOOR HEIGHT IS APPROX. 1" OVER BOTTOM ASYRACAL.
3. DOOR FINISH TO BE WHITE.
4. DOOR TO BE SUPPLIED WITH 10,000 CYCLE TORSION SPRINGS.
5. DOOR COUNTERBALANCE SPRINGING WEIGHT IS 595 LBS.
6. DOOR TO HAVE 3 LITES, (PER SECTION) OF INSULATED GLASS LOCATED IN SECTION 3 AS SHOWN.
7. DOOR TO MEET OR EXCEED 47, 25.0 PSF DESIGN WINDLOAD AND A 47.37.5 PSF TEST CONFIGURATION REQUIRES 0.016" (MIN.) INNER SKIN UPGRADE.
8. DOOR TO HAVE TWO INTERIOR MOUNTED #2 END STILE SLIDE BOLT DOOR LOCKS.
9. DOOR TO BE SUPPLIED WITH AN EXTENDED SHAFT AND MANUAL CHAIN HOIST.
10. DOOR REINFORCEMENT TO BE 2 1/4" UBAR CORNER REINFORCEMENT AND 2 1/4" UBAR STEEL SECTION BEGET BOTTOM SECTION REQUIRES TWO UBAR STRUTS.



NOTE: REFER TO THE APPROVED WINDOW INSTALLATION MANUAL FOR JAMB CONNECTION DETAILS OR REFER TO DASHA TECHNICAL DATA SHEET #161 FOR DETAILS ON JAMB CONNECTION FASTENERS AND MOUNTING SCHEDULES.  
NOTE: DIM (A) INCLUDES ONE CHAIN HOIST AND ADJOINING DOORS TRACK SET.



| DIM. | DESCRIPTION              | DIMENSIONS |
|------|--------------------------|------------|
| A    | DOOR WIDTH               | 12'-2"     |
| B    | OPENING WIDTH            | 12'-0"     |
| C    | NUMBER OF PANELS WIDE    | 3          |
| D    | DOOR HEIGHT              | 14'-0"     |
| E    | NUMBER OF SECTIONS HIGH  | 14'-0"     |
| F    | HEAD HEIGHT (MIN.)       | 16"        |
| G    | OVERHEAD CLEARANCE       | 125"       |
| H    | BACKGROD (MIN.)          | 191"       |
| J    | FLOOR TO CEILING (MIN.)  | 184"       |
| K    | SPRING PAD OFFSET        | 65"        |
| L    | QUAD SPRING PAD OFFSET   | 10.5"      |
| M    | SIDE ROOM 1 (MIN.)       | 15"        |
| N    | OPERATOR BACKROOM (MIN.) | 182"       |
| P    | SLANT CENTER CLEARANCE   | 182"       |

**Shop Drawing**  
Building Products Company

Copyright © 2012 by Building Products Company. All Rights Reserved. This drawing is the property of Building Products Company. No part of this drawing may be reproduced in any form without its written permission.

NOT TO SCALE  
DATE: 08-27-12  
DRAWN BY: ASD  
CHECKED BY: [Signature]  
PROJECT NO: 13307057-1-3

CUSTOMER: \_\_\_\_\_ CONTRACTOR: \_\_\_\_\_ ARCHITECT: \_\_\_\_\_







August 6, 2012

To whom it may concern:

Clopay model 3220 with W4 rating is available with 24" x 8" window lites. The 24" x 12" size windows have not been tested to W4 wind load ratings.

Thank you for using Clopay Building Products.

A handwritten signature in cursive script that reads 'Katrina Yohey'.

Katrina Yohey  
Commercial Product Manager