



Weaver

CONSTRUCTION MANAGEMENT

3679 S Huron Street, Suite 404 Englewood, Colorado 80110

Phone: (303) 789-4111 FAX: (303) 789-4310

SUBMITTAL TRANSMITTAL

August 28, 2012

Submittal No: 08301-004

PROJECT: **Harold Thompson Regional WRF**
Birdsall Rd.
Fountain, CO 80817
Job No. 2908

ENGINEER: **GMS, Inc.**
611 No. Weber St., #300
Colorado Springs, CO 80903
719-475-2935 Roger Sams

OWNER: **Lower Fountain Metropolitan
Sewage Disposal District**
901 S. Santa Fe Ave.
Fountain, CO 80817
719-382-5303 James Heckman

CONTRACTOR: **Front Range Raynor, Inc.**
3847 So. Mason St.
Fort Collins, CO 80525
Merlin Kooiman - merlin@frontrangeraynor.com

SUBJECT: Thermaseal Overhead Sectional Door by Raynor for the Blower Building

SPEC SECTION: 08301 - Overhead Sectional Doors

PREVIOUS SUBMISSION DATES:

DEVIATIONS FROM SPEC: YES NO

CONTRACTOR'S STAMP: This submittal has been reviewed by Weaver Construction Management and, unless indicated otherwise, has been found to be in conformance with the intent of the contract documents.

Contractor's Stamp:

Date: 8/28/12

Reviewed by: Adam Roeder

(X) Reviewed Without Comments

() Reviewed With Comments

ENGINEER'S

COMMENTS:

Engineer's Stamp:

ALL SPRING MOUNTING PADS MUST BE FLUSH WITH JAMBS. FIELD CHECK AND VERIFY ALL DETAILS AND DIMENSIONS. JAMBS, HEADER, JAMB EXTENSIONS AND PADS (AS SHOWN) BY OTHER THAN DOOR CONTRACTOR. THIS DRAWING WAS AS COMPLETE AND FACTUAL AS POSSIBLE AT THE TIME IS WAS PRINTED. WE DO HOWEVER, RESERVE THE RIGHT TO MAKE PRODUCT CHANGES IN SPECIFICATIONS AND AVAILABILITY WITHOUT NOTICE.

JOB NAME: Weaver - LFMSDD Blower Bldg LOCATION:

DISTRIBUTOR: FRONT RANGE RAYNOR DR CO.INC.

CONTRACTOR:

DRAWING(S) MUST BE APPROVED AND RETURNED TO DOOR DISTRIBUTOR AND FORWARDED TO RAYNOR GARAGE DOORS BEFORE ORDER WILL BE ENTERED INTO PRODUCTION. SHOP DRAWING FAX NUMBER 800/835-5463.

ARCHITECT:

CHECKED BY:

SHEET 1 OF 2 DRAWING NUMBER 483313 C

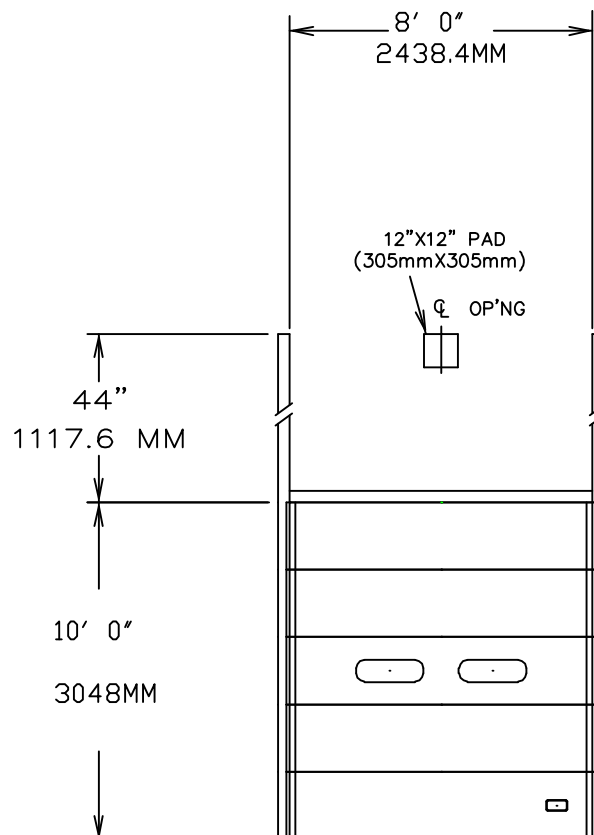
DATE: 8/27/2012

DOOR NUMBER	QTY	OPENING		ACTUAL		MODEL	JAMB			MOUNTING		LOCK
		WIDTH	HEIGHT	WIDTH	HEIGHT		W	S	M	ANGLE	BRKT	
1	1	8' 0"	10' 0"	8'2"	10' 0 3/4"	THOP			X	X		1IL
		2438.4MM	3048MM	2489.2 MM	3067.05MM							

REVISION C NOTES



PROPOSAL
DRAWING



1) DOORS SHALL BE THERMASEAL SECTIONAL OVERHEAD TYPE RAYNOR SERIES OPTIMA, AS MANUFACTURED BY RAYNOR GARAGE DOOR CO.. SECTIONS SHALL BE 1 3/4" (44.5mm) THICK, ROLL-FORMED FROM COMMERCIAL QUALITY HOT DIPPED GALVANIZED STEEL PER ASTM-924 AND A-653. DOOR SECTIONS CONSTRUCTED OF 20 GAUGE EXTERIOR, AND 26 GAUGE INTERIOR STUCCO-EMBOSSED, PENCIL GROOVED SKINS THERMAL BONDED TO A POLYURETHANE CORE. EXTERIOR AND INTERIOR SKINS TO BE SEPERATED BY A CONTINUOUS HOT MELT BEAD TO FORM AN EFFECTIVE THERMAL BREAK. JOINT SEALS ARE USED TO COMPLETE A WEATHER-TITE SEAL ALONG THE ENTIRE SECTION JOINTS. END STILES TO BE 16 GAUGE. SECTIONS TO HAVE CONTINUOUS 20 GA. HARDWARE STIPS. WHEN TESTED IN ACCORDANCE WITH ASTM C-518, THERMASEAL HAS THE FOLLOWING ENERGY VALUES: R-VALUE= 16.4 AND U-VALUE= .061 FINISH- EXTERIOR/INTERIOR OF DOOR SKINS PRE-COATED PRIOR TO ROLL-FORMING WITH A TWO COAT PROCESS OF BAKED ON POLYESTER FINISH OVER EPOXY PRIMER. WHITE EXTERIOR AND WHITE INTERIOR.

2) LOCKING- SPRING LOADED SLIDE BOLT ENGAGES SLOT IN TRACK. OPERABLE FROM INSIDE ONLY- MAY BE MOUNTED EITHER SIDE.

3) GLAZING- LITE INSERTS TO BE 24"(610MM)X8"(203MM) THERMAL TYPE GLASS, DSB INTERIOR, DSB EXTERIOR. (BREATHER TUBE)

4) TRACKS- 2" (50.8mm) HOT-DIPPED GALVANIZED TRACK, PER ASTM A-653, TO BE BRACKET MOUNTED OR CONTINUOUS ANGLE MOUNTED, AND FULLY ADJUSTABLE FOR SEALING DOOR TO JAMB. CONTINUOUS ANGLE SIZE TO BE NOT LESS THAN 2-5/16"X5"X3/32" (58.7mmX127mmX2.4mm). HORIZONTAL TRACK TO BE ADEQUATELY REINFORCED WITH CONTINUOUS ANGLE. HARDWARE- HINGES AND BRACKETS MADE FROM GALVANIZED STEEL.

SPRING COUNTERBALANCE- HEAVY DUTY OIL-TEMPERED WIRE TORSION SPRINGS ON A CONTINUOUS BALL BEARING CROSS-HEADER SHAFT. GALVANIZED AIRCRAFT TYPE LIFTING CABLES WITH MIN. SAFETY FACTOR OF 5 TO 1.

5) HEAD SEAL AND JAMB SEAL REQUIRED.

ALL SPRING MOUNTING PADS MUST BE FLUSH WITH JAMBS. FIELD CHECK AND VERIFY ALL DETAILS AND DIMENSIONS. JAMBS, HEADER, JAMB EXTENSIONS AND PADS (AS SHOWN) BY OTHER THAN DOOR CONTRACTOR. THIS DRAWING WAS AS COMPLETE AND FACTUAL AS POSSIBLE AT THE TIME IS WAS PRINTED. WE DO HOWEVER, RESERVE THE RIGHT TO MAKE PRODUCT CHANGES IN SPECIFICATIONS AND AVAILABILITY WITHOUT NOTICE.

JOB NAME: Weaver - LFMSDD Blower Bldg

LOCATION:

DISTRIBUTOR: FRONT RANGE RAYNOR DR CO.INC.

CONTRACTOR:

DRAWING(S) MUST BE APPROVED AND RETURNED TO DOOR DISTRIBUTOR AND FORWARDED TO RAYNOR GARAGE DOORS BEFORE ORDER WILL BE ENTERED INTO PRODUCTION. SHOP DRAWING FAX NUMBER 800/835-5463.

ARCHITECT:

CHECKED BY:

SHEET
2 OF 2

DRAWING
NUMBER

483313 C

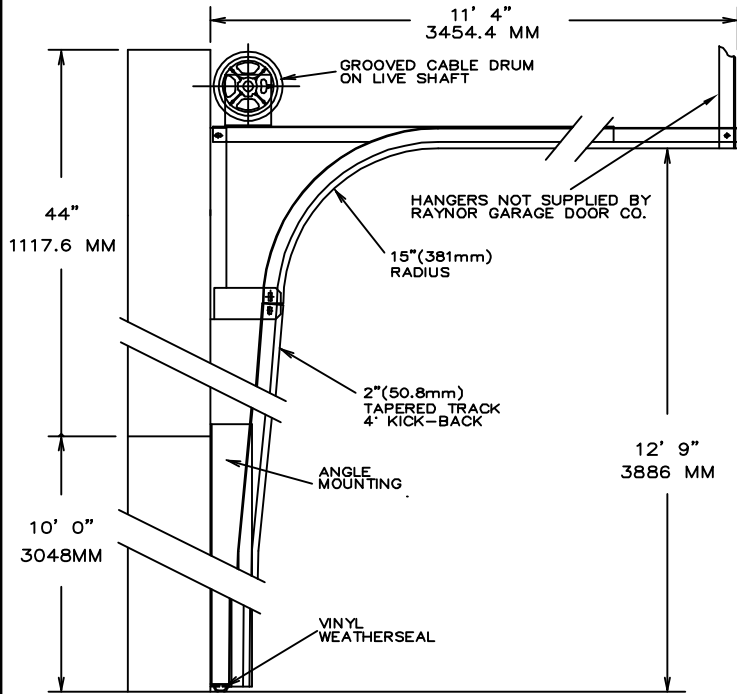
DATE: 8/27/2012

REVISION C NOTES

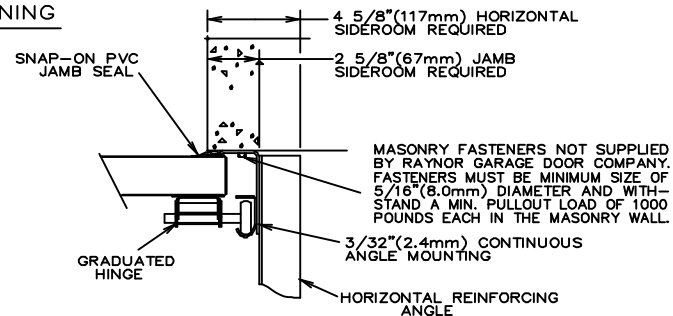
DOOR NUMBER	QTY	OPENING		ACTUAL		MODEL	JAMB			MOUNTING		LOCK
		WIDTH	HEIGHT	WIDTH	HEIGHT		W	S	M	ANGLE	BRKT	
1	1	8' 0"	10' 0"	8'2"	10' 0 3/4"	THOP			X	X		11L
		2438.4MM	3048MM	2489.2 MM	3067.05MM							



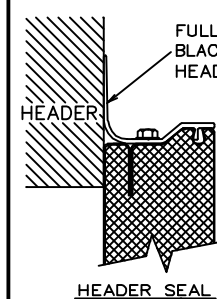
PROPOSAL
DRAWING



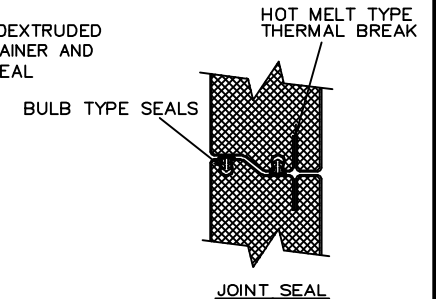
SECTION THRU OPENING



JAMB DETAIL



HEADER SEAL



JOINT SEAL