



**Weaver Construction Management, Inc.**  
 3679 S. Huron St., Suite 404  
 Englewood, CO 80110  
 Phone: (303) 789-4111 FAX: (303) 789-4310

**SUBMITTAL TRANSMITTAL**

November 18, 2011  
**WCM Submittal No. 08306-001.A**

**PROJECT: HAROLD D. THOMPSON W.R.F.**  
 9001 Birdsall Road.  
 Fountain, Colorado 80817

**ENGINEER: G.M.S. Inc.**  
 611 North Weber St. # 300  
 Colorado Springs, CO 80239  
 719-475-2935 Roger Sams

**OWNER: Lower Fountain Metropolitan Sewage Disposal District**  
 901 South Santa Fe Avenue  
 Fountain, CO 80817

**CONTRACTOR: DALCO Industries, Inc.**  
 3730 Salem St.  
 Denver, CO 80239  
 303-371-3950

**SUBJECT: Resubmittal of Access for Drain and Wastewater Wet Well P&D**  
 WCM review comments letter and Access Door Nystrom 48" x 60" non-drainable as a replacement

**SPEC SECTION: 08306**

**PREVIOUS SUBMISSION DATES: none**

**DEVIATIONS FROM SPEC: \_\_\_\_\_ YES  X  NO**

**CONTRACTOR'S STAMP:** This submittal has been reviewed by WCM and approved with respect to the means, methods, techniques, & safety precautions & programs incidental thereto. Weaver General Construction also warrants that this submittal complies with contracted documents and comprises on deviations thereto.

**Contractor's Stamp:**

**Engineer's Stamp:**

Date: 11-18-2011

Reviewed by: \_\_\_\_\_

( ) Reviewed Without Comments

( X ) Reviewed With Comments

**ENGINEER'S COMMENTS:** \_\_\_\_\_



**Project: HDTWRF Project**

**Location: Fountain, CO**

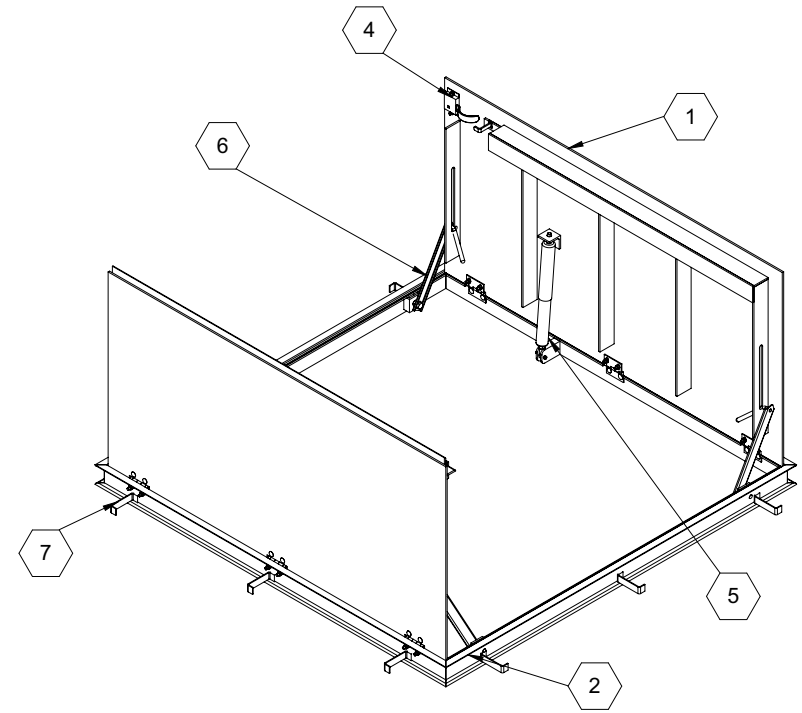
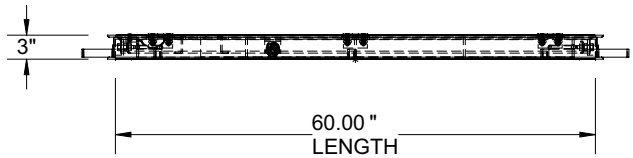
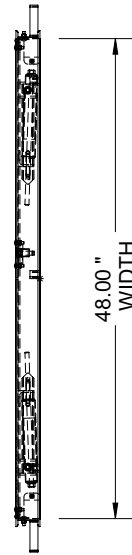
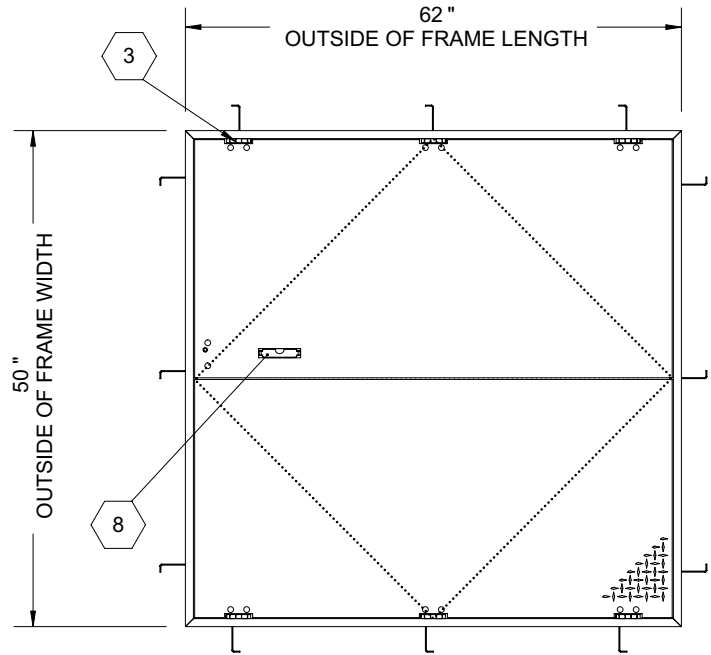
**Supplier: Nystrom**

**Date: 11/18/11**

**Subject: Access Door Nystrom 48" x 60" non-drainable for Drain and Wastewater Wet Well P&D**

**Submittal 08306-01.A.**


- 1. Submitting Nystrom manufacturer door in-lieu of previously submitted and Revise and Resubmit Bilco door.**

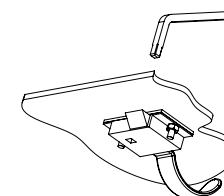
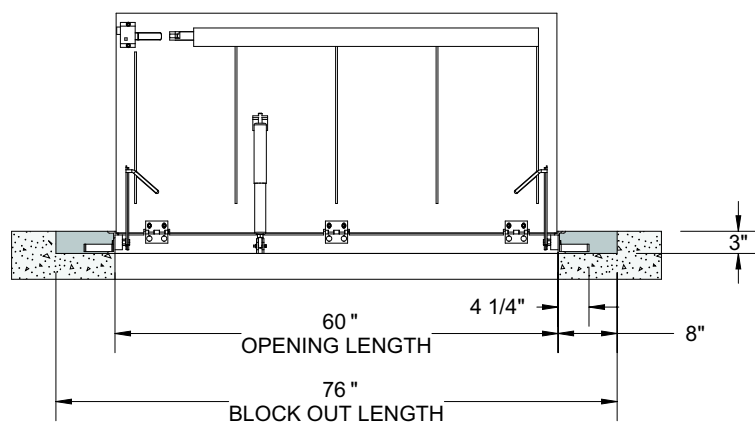
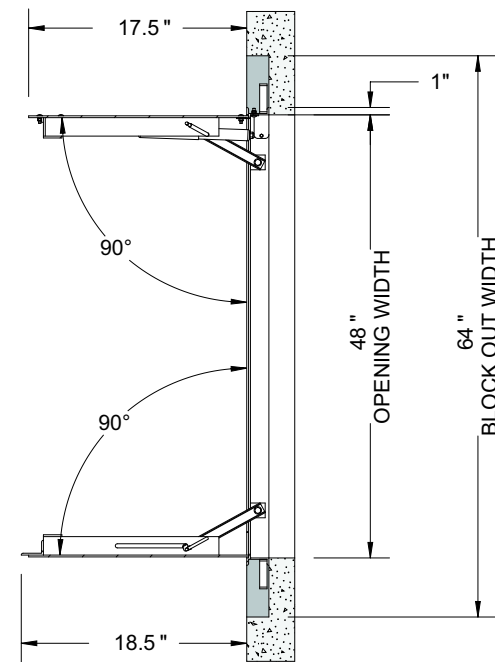
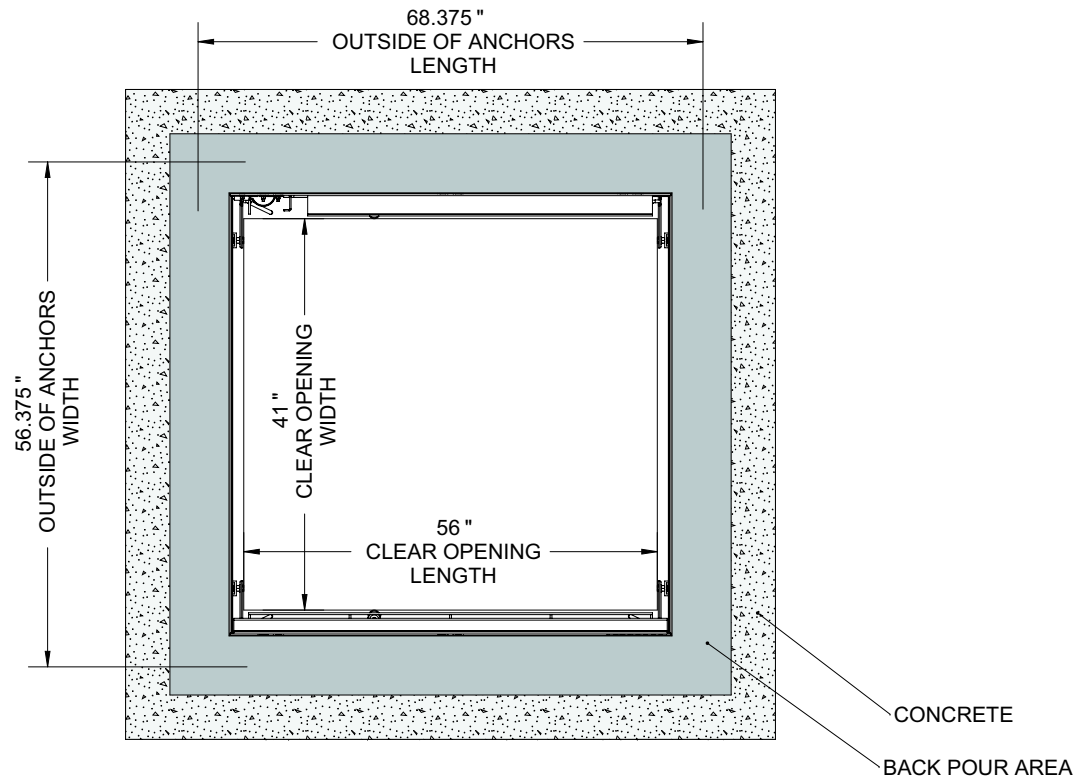


**SPECIFICATIONS:**

- ① **DOOR:** ALUMINUM, 1/4" DIAMOND PLATE, MILL FINISH WITH A LIVE LOAD OF 300 PSF WITH A MAXIMUM DEFLECTION OF L/160
  - ② **FRAME:** ALUMINUM, 1/4" EXTRUSION, EPOXY PAINT FINISH ON EXTERIOR SURFACES THAT COME IN CONTACT WITH CONCRETE
  - ③ **HINGES:** TYPE 316 STAINLESS STEEL
  - ④ **SLAM LATCH:** TYPE 316 STAINLESS STEEL WITH INSIDE LEVER HANDLE AND OUTSIDE REMOVABLE 5/16" SQUARE L HANDLE
  - ⑤ **COUNTER-BALANCE SPRING:** TYPE 17-7 STAINLESS STEEL SPRING ENCLOSED IN A TYPE 316 STAINLESS STEEL TELESCOPING TUBE
  - ⑥ **HOLD-OPEN ARM:** TYPE 316 STAINLESS STEEL WITH RED VINYL GRIP HANDLE
  - ⑦ **ANCHOR:** 4" CONCRETE ANCHOR STRAPS PROVIDED
  - ⑧ **FLUSH LIFTING HANDLE:** TYPE 316 STAINLESS STEEL
- FLOOR DOOR SIZE:**  
48 " (WIDTH) x 60 " (LENGTH)
- CLEAR UNOBSTRUCTED OPENING:**  
41 " (WIDTH) x 56 " (LENGTH)
- OPENING:**  
48 " (WIDTH) x 60 " (LENGTH)

PROPRIETARY AND CONFIDENTIAL: THE INFORMATION CONTAINED IN THIS DRAWING IS THE SOLE PROPERTY OF NYSTROM. ANY REPRODUCTION IN PART OR AS A WHOLE WITHOUT THE WRITTEN PERMISSION OF NYSTROM IS PROHIBITED. THIS IS A GENERIC SHOP DRAWING AND MAY NOT BE AN ACTUAL REPRESENTATION OF THE FINAL PRODUCT.

PROJECT:					
ARCHITECT:					
CONTRACTOR:					
QTY:					
PART#:		<b>FDNPA 48 X 60 DAL</b>			
 Right to site.™ 9300 73rd Avenue North Brooklyn Park, MN 55428		TITLE: Floor Door, Non-Drainable, Dbl Dr, 316 SST Hdw, Alum, Mill, Pedestrian, Cast-In Anchors, Slam Latch Removbl L Hdl			
		NAME	DATE	SIZE	DWG. NO.
DRAWN	JE	04/18/11	A	FDNPA_X_DAL	A
RELEASED	DWO	04/18/11	WEIGHT: Varies		SHEET 1 OF 2



### SLAM LATCH DETAIL

**NYSTROM**

Right to site.<sup>™</sup>  
9300 73rd Avenue North  
Brooklyn Park, MN 55428

TITLE: Floor Door, Non-Drainable,  
Dbl Dr, 316 SST Hdw,  
Alum, Mill, Pedestrian, Cast-In Anchors, Slam  
Latch Removbl L Hdl

	NAME	DATE	SIZE	DWG. NO.	REV
DRAWN	JE	04/18/11	A	FDNPA_X_DAL	A
RELEASED	DWO	04/18/11	WEIGHT: Varies	SHEET 2 OF 2	

PROPRIETARY AND CONFIDENTIAL: THE INFORMATION CONTAINED IN THIS DRAWING IS THE SOLE PROPERTY OF NYSTROM. ANY REPRODUCTION IN PART OR AS A WHOLE WITHOUT THE WRITTEN PERMISSION OF NYSTROM IS PROHIBITED. THIS IS A GENERIC SHOP DRAWING AND MAY NOT BE AN ACTUAL REPRESENTATION OF THE FINAL PRODUCT.