



**Weaver Construction Management, Inc.**  
 3679 S. Huron St., Suite 404  
 Englewood, CO 80110  
 Phone: (303) 789-4111 FAX: (303) 789-4310

**SUBMITTAL TRANSMITTAL**

**November 10, 2011**  
**WCM Submittal No. 08306-001**

**PROJECT:** **HAROLD D. THOMPSON W.R.F.**  
 9001 Birdsall Road.  
 Fountain, Colorado 80817

**ENGINEER:** **G.M.S. Inc.**  
 611 North Weber St. # 300  
 Colorado Springs, CO 80239  
 719-475-2935 Roger Sams

**OWNER:** **Lower Fountain Metropolitan Sewage Disposal District**  
 901 South Santa Fe Avenue  
 Fountain, CO 80817

**CONTRACTOR:** **DALCO Industries, Inc.**  
 3730 Salem St.  
 Denver, CO 80239  
 303-371-3950

**SUBJECT** Access Door - Bilco JD3AL - 4' x 5' for Drain and Wastewater  
 Wet Well P&D

Note: Requesting Expedited Review and Response

SPEC SECTION: 08306

PREVIOUS SUBMISSION DATES: none

DEVIATIONS FROM SPEC: \_\_\_\_\_ YES  X  NO

CONTRACTOR'S STAMP: This submittal has been reviewed by WCM and approved with respect to the means, methods, techniques, & safety precautions & programs incidental thereto. Weaver General Construction also warrants that this submittal complies with contracted documents and comprises on deviations thereto.

<p>Contractor's Stamp:</p> <p>Date: 11-10-2011          Reviewed by: _____  <input type="checkbox"/> Reviewed Without Comments  <input checked="" type="checkbox"/> Reviewed With Comments</p>	<p>Engineer's Stamp:</p>
--	--------------------------

ENGINEER'S COMMENTS: \_\_\_\_\_



**Project: HDTWRF Project**

**Location: Fountain, CO**

**Supplier: Dalco in C/O Bilco**

**Date: 11/9/11**

**Submittal for: Access Door Bilco JD-3AL 4' x 5' for Drain and Wastewater Wet Well P&D**

**Submittal Review Comment 08306-01**

**We request an expedited response by 11/15/11. Thank you.**

**The Bilco Company**  
P.O. Box 1203  
New Haven, CT. 06505  
(203) 934-6363, Fax (203) 933-0255



November 09 2011

2011036112

Attn: JOHN JACOB

WEAVER GENERAL CONST CO  
SUITE 404  
3679 SOUTH HURON STREET  
ENGLEWOOD CO 80110

Re: Your Order: 82906  
Job : HDTWRF PROJECT 9103

Thank you for your above order. In accordance with your instructions we are pleased to enclose 4 copies of shop details to submit for architect's approval and will hold up fabrication until approval to proceed is received. The fabrication time required will be 4 week(s) AFTER we receive approval.

DRAWING NUMBER: JD-15005 REV A  
EMAIL: john@weavercm.com  
timb@dalcoind.com

Cordially

The Bilco Company

cc DALCO INDUSTRIES  
3730 SALEM STREET  
DENVER CO 80239

**IMPORTANT NOTICE**  
**APPROVED DRAWINGS MUST BE RECEIVED AT BILCO BEFORE**  
**PRODUCTION CAN BEGIN. LEAD TIME AND SHIP DATES ARE BASED ON**  
**THE DATE THAT APPROVED DRAWINGS ARE RECEIVED AT BILCO.**  
**\*\*AS PER BILCO POLICY PURCHASE ORDERS WILL NOT BE SIGNED AND RETURNED**  
**UNTIL APPROVAL DRAWINGS ARE RECEIVED BY BILCO.\*\***

Sym.	Revision	Date	By
A	New Release		

- SPECIFICATIONS:**
- ① Bilco heavy duty forged stainless steel hinges with stainless steel pins
  - ② Guide Arm (if req'd)
  - ③
  - ④ Standard slam lock
  - ⑤ Continuous EPDM debris gasket
  - ⑥ Bilco stainless steel automatic hold open arm
  - ⑦ 1/4" aluminum diamond pattern plate cover
  - ⑧ Bilco 1/4" aluminum channel frame with recessed anchors
  - ⑨ Stainless steel lock strike
  - ⑩ Stainless steel spring lifting mechanism
  - ⑪ Heavy duty check chain
- INSTALLER NOTES:**
- A. Use caution. Cover is spring loaded. Do not remove safety shipping bolt until unit is to be installed and in normal horizontal operating position.
  - B. Be sure unit is set on slight pitch toward drain corner.
  - C. Before anchoring in place open and close door. Check to see that the door in the closed position rests on the frame all around. If not, shim under the frame at the proper corner.
  - D. Do not reduce 1 1/2" drain pipe to dry well or disposal system.
  - E. Bend down anchors if required
- ② UNIT(S) REQUIRED AS SHOWN (Aluminum Weldment)  
COVER REINF. FOR 300 Lbs. PER Sq. Ft.
- SHOP FINISH:  
COVER: MILL FINISH  
FRAME: MILL FINISH  
HARDWARE: TYPE 316 STAINLESS STEEL (UNLESS OTHERWISE SPECIFIED)

**Customer:** WEAVER GENERAL CONST CO  
SUITE 404  
ENGLEWOOD CO 80110  
82906

**P.O. N°:**

**Job:** HDTWRF PROJECT 9103

**Builder:**

**Architect:**

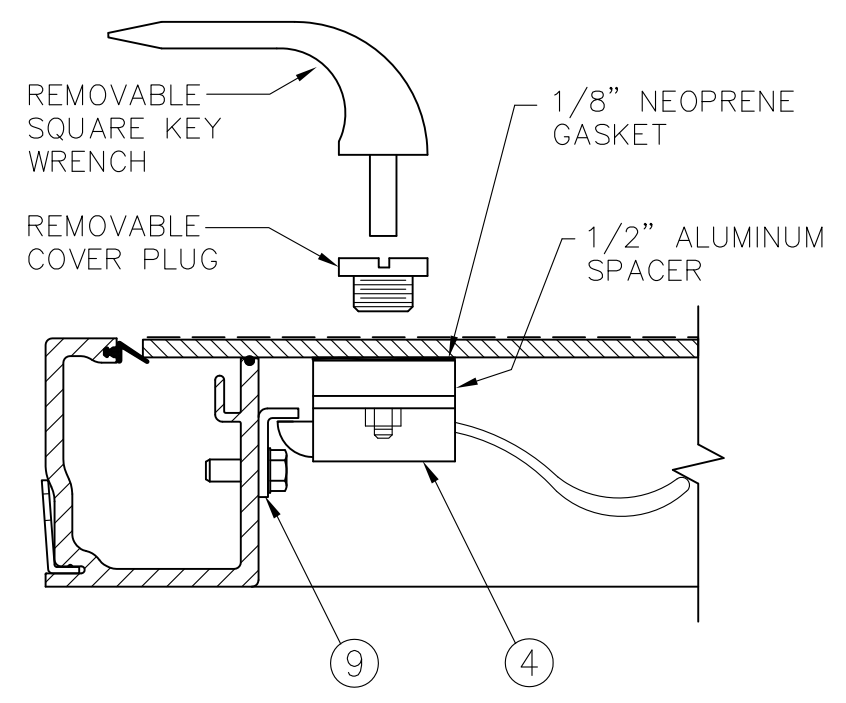
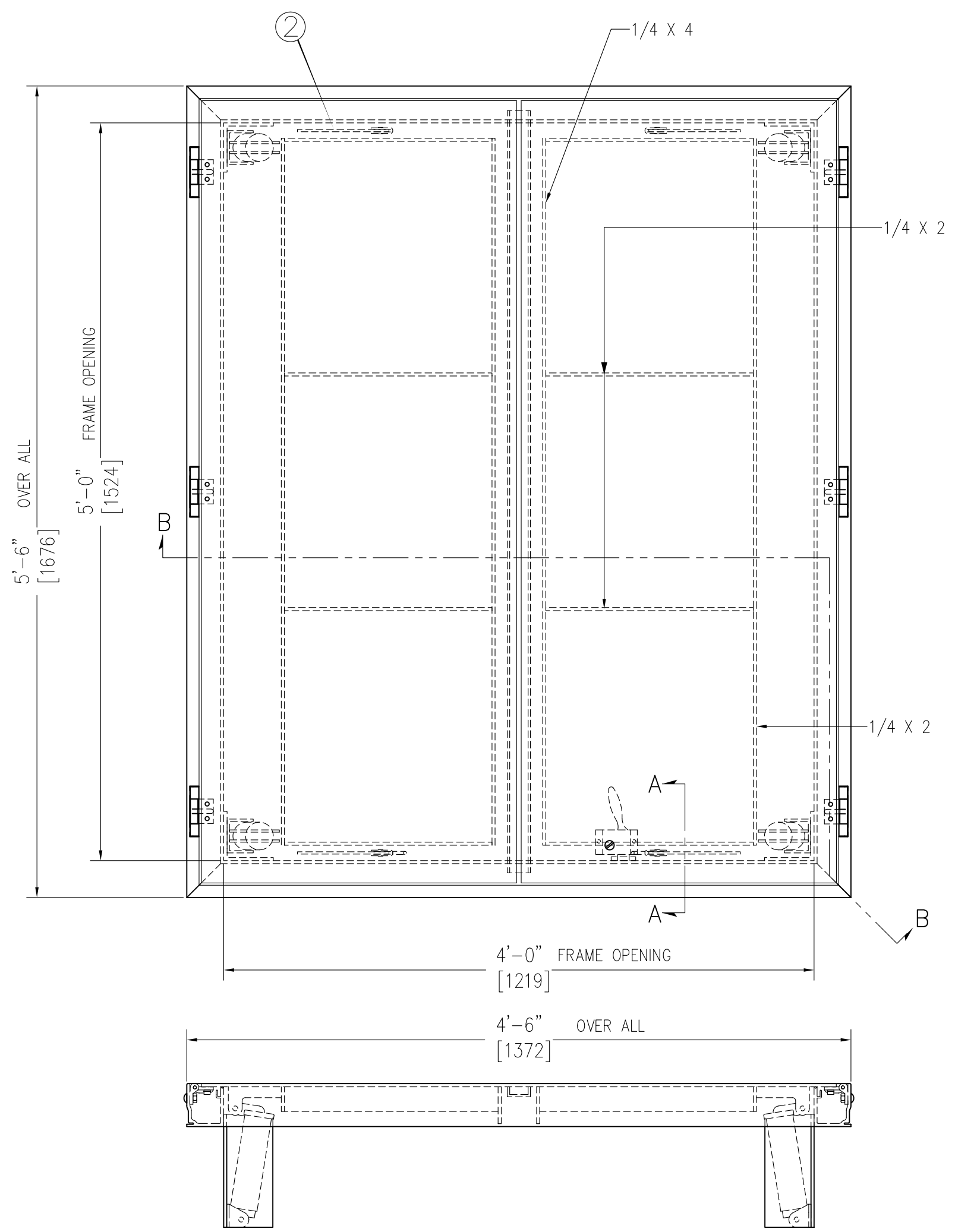
**Engineer:**

**Sales Rep:** DALCO INDUSTRIES  
3730 SALEM STREET  
DENVER CO 80239

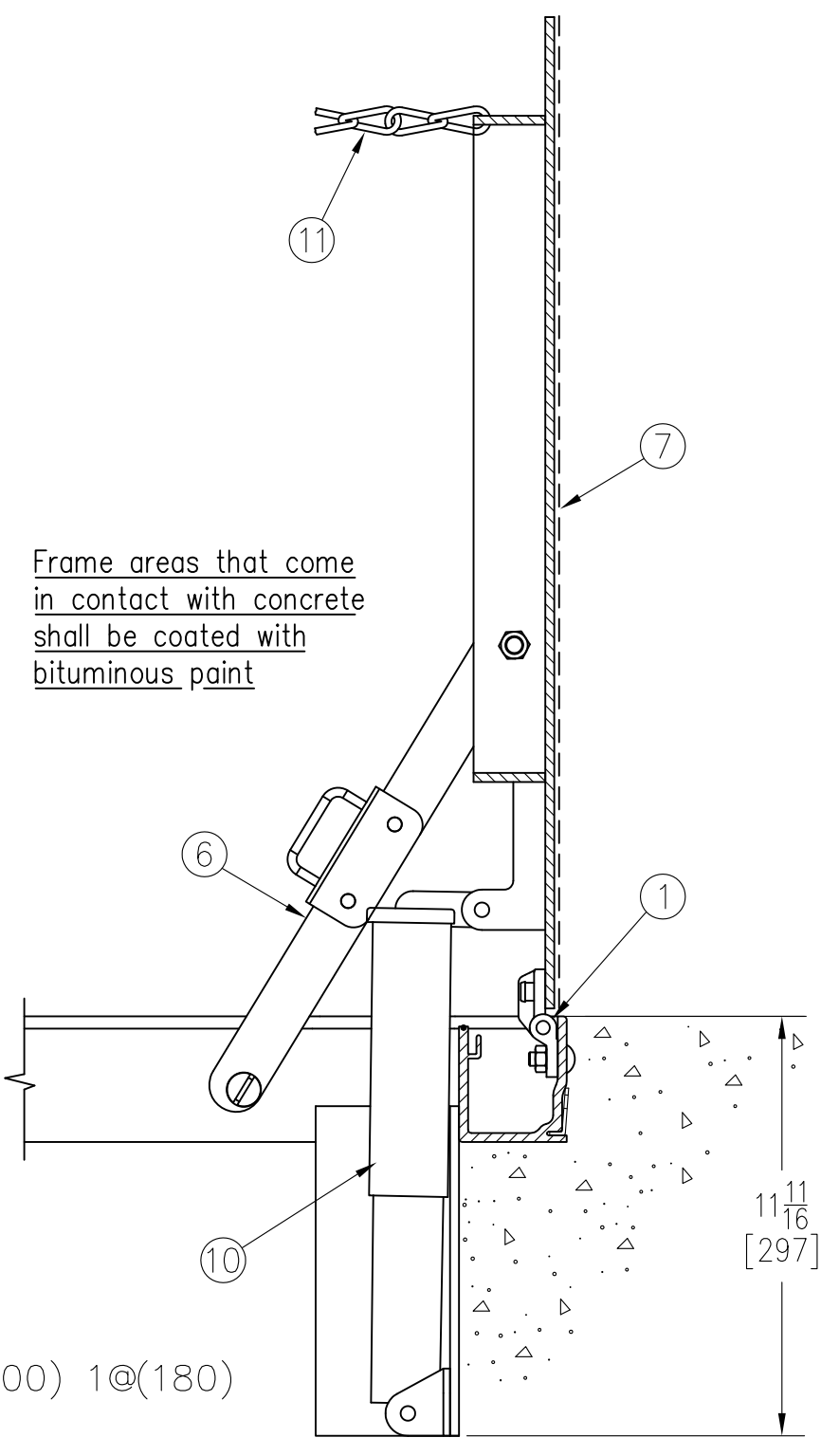
Manufacturers of Doors for Special Services  
**Bilco**® THE BILCO COMPANY  
New Haven, Connecticut 06505

TYPE "JD" ALUMINUM DOUBLE LEAF ACCESS  
DOOR - SIZE 4'-0" x 5'-0"

Drawn By BF	Date 11-9-11	Drawing No. JD-15005	Rev. A
530901	Scale DO NOT SCALE		



SECTION A-A  
STANDARD SLAM LOCK



SECTION B-B  
SHOWN WITH COVER OPEN ENLARGED FOR CLARITY 1@(100) 1@(180)

THIS DRAWING IS THE PROPERTY OF THE BILCO COMPANY AND INCORPORATES INFORMATION WHICH IS PROPRIETARY. PUBLICATION AND/OR PUBLIC DISTRIBUTION IN WHOLE OR IN PART IS EXPRESSLY PROHIBITED WITHOUT THE PRIOR WRITTEN CONSENT OF THE BILCO COMPANY. THE INFORMATION CONTAINED HEREIN REMAINS THE PROPERTY OF THE BILCO COMPANY. ALL RIGHTS RESERVED.

JD-N\_AL 7-30-10