



Weaver

CONSTRUCTION MANAGEMENT

3679 S Huron Street, Suite 404 Englewood, Colorado 80110

Phone: (303) 789-4111 FAX: (303) 789-4310

SUBMITTAL TRANSMITTAL

August 13, 2012

Submittal No: 09900-006

PROJECT: **Harold Thompson Regional WRF**
Birdsall Rd.
Fountain, CO 80817
Job No. 2908

ENGINEER: **GMS, Inc.**
611 No. Weber St., #300
Colorado Springs, CO 80903
719-475-2935 Roger Sams

OWNER: **Lower Fountain Metropolitan
Sewage Disposal District**
901 S. Santa Fe Ave.
Fountain, CO 80817
719-382-5303 James Heckman

CONTRACTOR: **National Coatings Inc.**
Eddie Salas
303-825-0155
esalas@nationalcoatings.biz

SUBJECT: Color Selection at the P&D Building, Including Building Structural Steel

SPEC SECTION: 09900 - Painting

PREVIOUS SUBMISSION DATES:

DEVIATIONS FROM SPEC: ___ YES X NO

CONTRACTOR'S STAMP: This submittal has been reviewed by Weaver Construction Management and, unless indicated otherwise, has been found to be in conformance with the intent of the contract documents.

Contractor's Stamp:

Engineer's Stamp:

Date: 9/13/12

Reviewed by: John Jacob

(x) Reviewed Without Comments

() Reviewed With Comments

ENGINEER'S

COMMENTS:



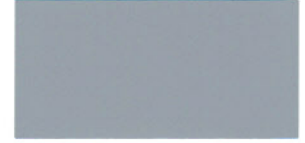
Protective & Marine Coatings



Umbra SW 4008
LRV 9%



Graphite SW 4017
LRV 5%



Slate Gray SW 4026
LRV 36%



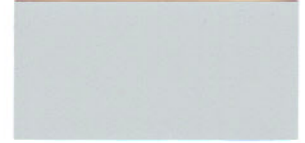
Bolt Brown SW 4001
LRV 8%



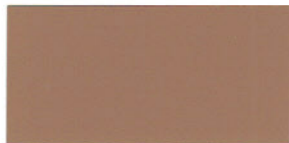
Walnut Brown SW 4009
LRV 3%



Tower Gray SW 4018
LRV 18%



Galvano SW 4027
LRV 58%



Modular Tan SW 4002
LRV 26%



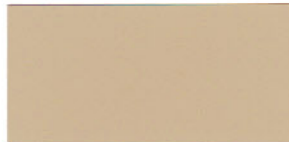
Pumice Stone SW 4010
LRV 23%



Flint Gray SW 4019
LRV 47%



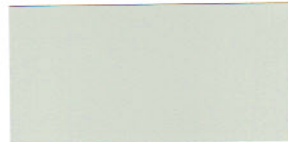
Gypsum ❖ SW 4028
LRV 72%



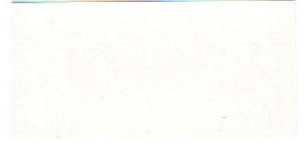
Pallet Tan SW 4003
LRV 49%



Mortar SW 4011
LRV 43%



Zephyr SW 4020
LRV 63%



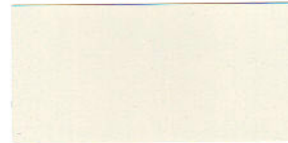
Pillar White SW 4029
LRV 77%



Tannery • SW 4004
LRV 64%



Cirrus White SW 4012
LRV 74%



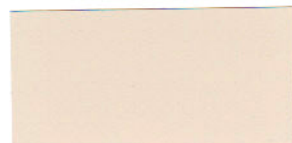
Filament SW 4021
LRV 72%



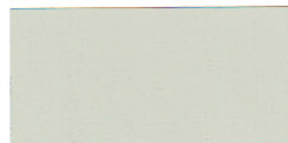
Nickel SW 4030
LRV 47%



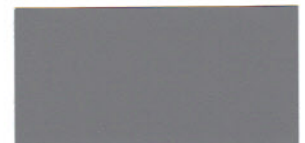
Cylinder Cream SW 4005
LRV 74%



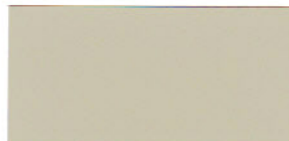
Ballast Beige SW 4013
LRV 65%



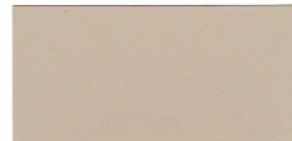
Balsam SW 4022
LRV 62%



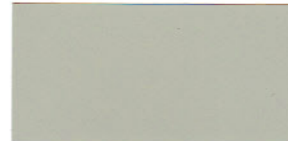
Structural Gray SW 4031
LRV 24%



Lodestone SW 4006
LRV 51%



Cantilever Tan SW 4014
LRV 48%



Olivine SW 4023
LRV 46%



Vacuum Black SW 4032
LRV 4%



Bronze SW 4007
LRV 23%



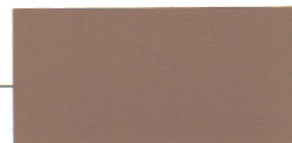
Torque Tan SW 4015
LRV 35%



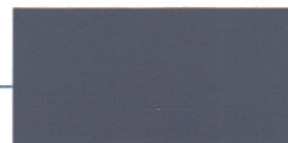
Enviro Green SW 4024
LRV 15%



Brass ❖ SW 4033
LRV 48%



Corrugate Brown SW 4016
LRV 24%



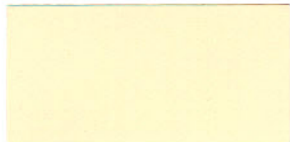
Anchor Gray SW 4025
LRV 13%



Junction Yellow • SW 4034
LRV 69%

For INTERIORS use only with:

- ❖ BAC's
- EnviroToners
- BAC's or EnviroToners



Optic Yellow SW 4035 LRV 76%



Mill Ivory • SW 4036 LRV 81%



Silica SW 4037 LRV 59%



Copperplate SW 4038 LRV 31%



Thermal Orange SW 4039 LRV 18%



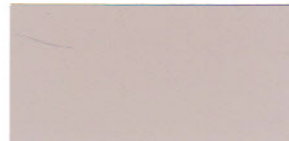
Deck Red SW 4040 LRV 8%



Precision Plum SW 4041 LRV 15%



Magnetic Mauve SW 4042 LRV 29%



Bearing Taupe SW 4043 LRV 50%



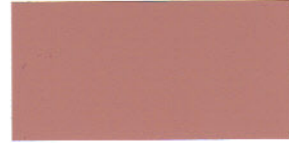
Quartzite SW 4044 LRV 67%



Ceramic Buff SW 4045 LRV 73%



Carousel Coral SW 4046 LRV 53%



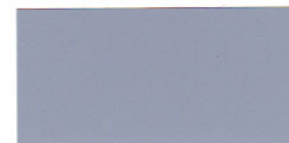
Firedust SW 4047 LRV 30%



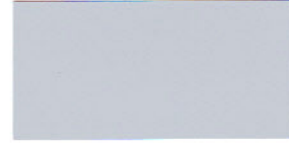
Mason Brick SW 4048 LRV 8%



Camshaft SW 4049 LRV 12%



Voltage Violet SW 4050 LRV 36%



Rhombus SW 4051 LRV 56%



Argent SW 4052 LRV 71%



Cool Blue SW 4053 LRV 69%



Basin SW 4054 LRV 51%



Polymer Blue SW 4055 LRV 33%



Blueprint SW 4056 LRV 6%



Toggle Teal SW 4057 LRV 28%



Current SW 4058 LRV 67%



Conductor Blue SW 4059 LRV 31%



Off Shore SW 4060 LRV 50%



Hydro Blue SW 4061 LRV 74%



Spillway SW 4062 LRV 60%



Robotic Blue SW 4063 LRV 31%





Turbine Blue SW 4064 LRV 18%



Techno Teal SW 4065 LRV 21%



Rotor Turquoise SW 4066 LRV 37%



Dewpoint SW 4067 LRV 56%



Alloy Aqua SW 4068 LRV 76%



Emerald Ice • SW 4069 LRV 78%



Generator Green SW 4070 LRV 44%



Rain Forest SW 4071 LRV 8%



Cedar Green ■ SW 4072 LRV 3%



Recycled Red ■ SW 4073 LRV 26%



Power Orange • SW 4074 LRV 34%



Green Byte • SW 4076 LRV 44%



Circuit Breaker • SW 4077 LRV 32%



Kinetic Teal SW 4078 LRV 23%



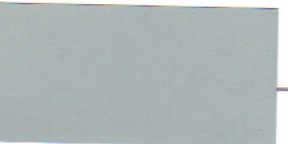
Laser Blue SW 4079 LRV 16%



Plumb SW 4080 LRV 17%



ANSI #61 Gray



ANSI #70 Gray

Safety Colors



Safety Red SW4081 LRV 11%



International Orange SW4082 LRV 17%



Safety Orange SW4083 LRV 17%



Safety Yellow SW4084 LRV 28%



Safety Green • SW4085 LRV 29%



Safety Blue SW4086 LRV 17%

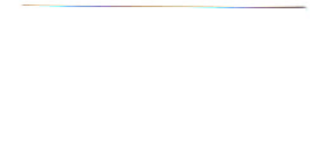


Black SW4090 LRV 0%



Silver Brite® SW4091 B59S11 Industrial Aluminum Paint B59S4

Whites



Ultra White LRV 88%



Extra White LRV 86%



Pure White LRV 85%

Primers



Off White



Buff/Tan



Zinc Clad™ Primers



Gray



Red Oxide

FluoroKem Colors



Bright Yellow B65YW552



Safety Red B65R550



Safety Yellow NB65Y550



Green B65G550



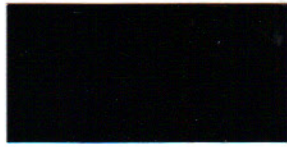
Gold B65YW551



Blue B65L550



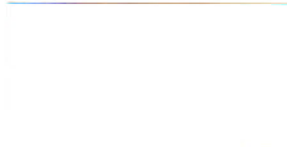
Terra Cotta B65RW551



Black B65B550



Red Oxide B65RW552

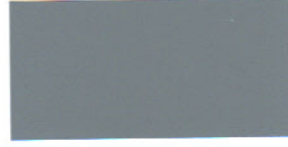


White B65W550

Hi-Temp Colors



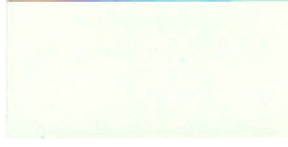
Cirrus Gray HT1



Shale Gray HT2



Thunder Gray HT3

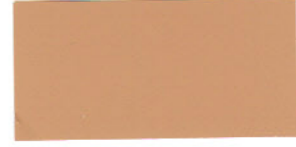


New Toned White HT4

Potable Water Colors



Mill White PW1



Buff PW2



Light Blue PW3



Sanitary White PW4



ControlTech Colors



Haze Gray CT1



Tile Red CT2

Color System

THE 4000 SERIES

Color approximates the appearance of the actual coating. Factors such as the type of product, degree of gloss, texture, size and shape of area, lighting, heat, or method of application may cause color variance. Performance of certain colors may be affected by specific exposure environments. Not all colors are available in all Product lines. Contact your local Sherwin-Williams representative for color availability of each product. NOTE: For uniformity of color and gloss, some colors may require multiple coats.



COLOR CARD

Protective & Marine Coatings

Color System

THE 4000 SERIES

*Protecting
What's
Important*



A COMPLETE LINE OF PRODUCTS.

MARKET EXPERTISE.

ON-TIME DISTRIBUTION.

What else would you expect from a world leader
in protective coatings and linings?

It starts with a complete line of time-tested, high-performance products and some of the most innovative and greenest technologies in the coatings industry. But we know that it takes more than product alone to be a world leader in protective coatings and linings. And so do the customers that rely on us every day as we help them protect their business.

That's where nearly 150 years of coatings industry experience comes in. Add to that a NACE-trained workforce with a combined 3,700 years of experience in corrosion control. And the market-specific knowledge that our experts provide to evaluate, recommend and deliver the highest-performance coatings and linings that protect our customers' assets.

It also means that we deliver on time, every time from 3,900 company-owned distribution points worldwide. Leave nothing to chance. Your single source of supply. Sherwin-Williams.

To learn more, contact your
local representative or call
1-800-524-5979 to have a
representative contact you.



Products available using maxitoner colorants:

- Acrolon 218 HS Polyurethane
- ArmorSeal 1000HS
- ArmorSeal HS Floor Enamel
- ArmorSeal 650 SL
- ArmorSeal Rexthane I
- Corothane I MCU
- Dura-Plate® 235
- Epolon II Multi-Mil
- Fast Clad DTM Mastic
- Fast Clad DTM Urethane
- Fast Clad Urethane
- Hi-Solids Polyurethane
- Industrial Enamel
- Industrial Enamel HS
- Industrial Enamel Low VOC
- Industrial Urethane Alkyd
- Kem 4000
- Macropoxy 646 FC
- Macropoxy High Solids
- Metalastic DTM Enamel
- Pylon HP
- Polysiloxane XLE-80
- Polysiloxane 1K
- SherThane 2K Urethane
- SteelMaster 9500
- Tile Clad High Solids

Safety Colors are available in the following:

- Acrolon 218 HS
- Corothane I MCU
- DTM Acrylic Coating
- FluoroKem
- Hi-Solids Polyurethane
- Industrial Enamel
- Industrial Enamel HS
- Industrial Enamel Low VOC
- Industrial Urethane Alkyd
- Kem 4000
- Macropoxy 646
- Metalatex Semi-Gloss Acrylic
- Polysiloxane 1K
- Sher-Cryl HPA Acrylic
- SteelMaster 9500
- Tile Clad HS Epoxy
- Waterbased Acrolon 100
- Waterbased Industrial Enamel

Products available using EnviroToner colorants:

- ArmorSeal 1K
- Bond-Plex WB Acrylic
- DTM Acrylic Coating
- Fast Clad HB Acrylic
- Floor-Plex 7100
- HydroGloss WB Urethane
- Metalatex S/G
- Sher-Cryl HPA Acrylic
- SprayLastic Exterior WB Dryfall
- Tread-Plex
- Waterbased Acrolon 100
- Waterbased Catalyzed Epoxy
- Waterbased Industrial Enamel
- Waterbased Tile Clad Epoxy
- Waterbased Acrylic Dryfall

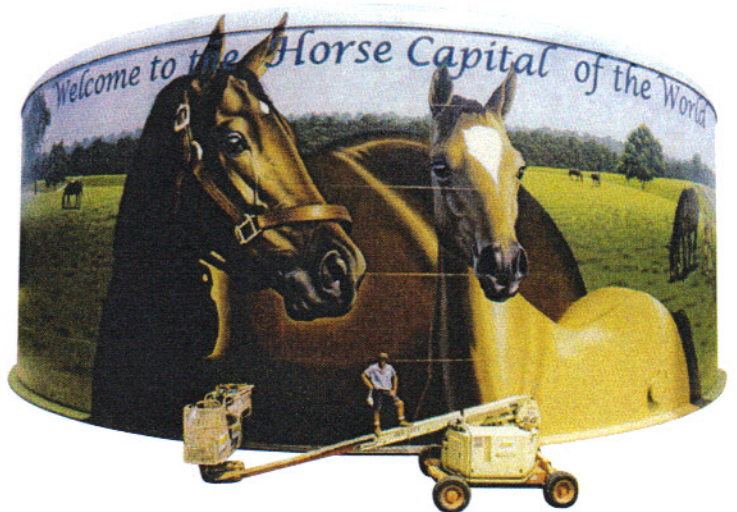
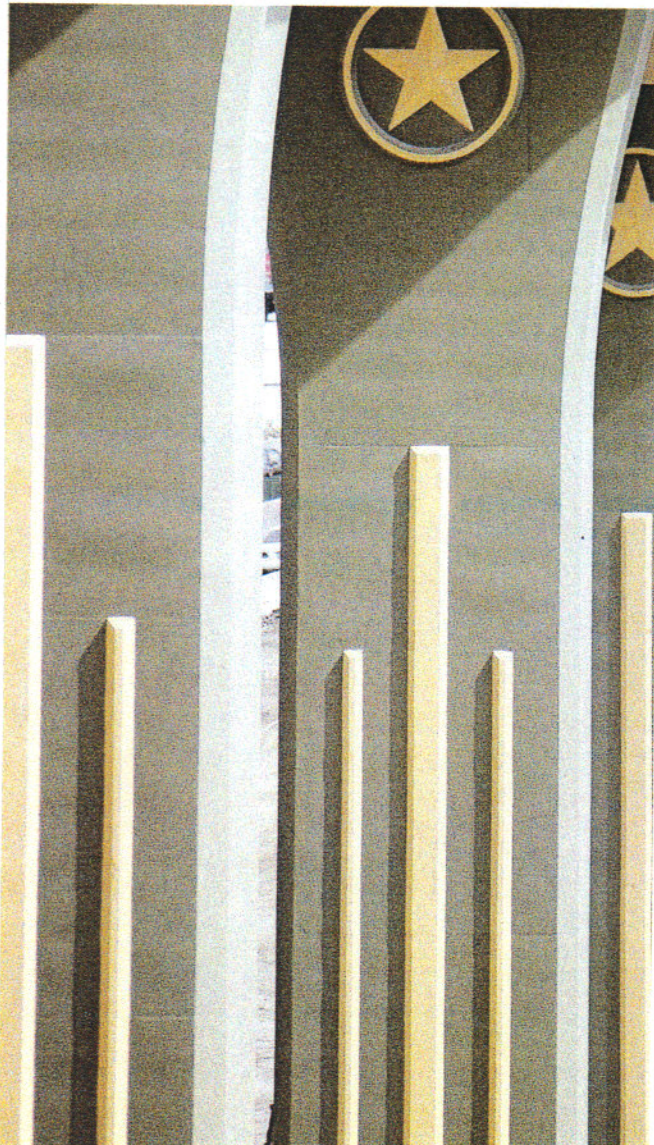


Protective Consultative Comprehensive

With over 144 years of experience, Sherwin-Williams is a world wide leader in Protective and Marine coatings. Our ongoing commitment to research and development, coupled with our highly trained corrosion specification specialists and renowned technical support, ensure you always receive the products, services, and answers you need when you need them. And, with 3,900 distribution points world wide and manufacturing and distribution in 20 countries, leave nothing to chance.

As VOC limits drop around the world and regulations remain in constant flux, we're partnering with our customers to help them understand new requirements and to plan their projects accordingly.

Whatever your industry, whatever your challenges, Sherwin-Williams can provide the innovative products and personal service you need. To learn more, call 800-524-5979 or visit sherwin-williams.com/protective.



Sherwin-Williams can develop a customized color program for your facility that will meet your objectives and budget considerations. Contact your Sherwin-Williams representative for qualifying information.